

## Product datasheet for **MG214722**

### **Doxl2 (NM\_001029987) Mouse Tagged ORF Clone**

#### **Product data:**

<b>Product Type:</b>	Expression Plasmids
<b>Tag:</b>	TurboGFP
<b>Symbol:</b>	Doxl2
<b>Mammalian Cell Selection:</b>	Neomycin
<b>Vector:</b>	pCMV6-AC-GFP (PS100010)
<b>E. coli Selection:</b>	Ampicillin (100 ug/mL)



**ORF Nucleotide Sequence:** >MG214722 representing NM\_001029987  
 Red=Cloning site Blue=ORF Green=Tags(s)

TTTTGTAATACGACTCACTATAGGGCGCCGGGAATTCGTGCGACTGGATCCGGTACCGAGGAGATCTGCC  
 GCC**CGGATCGCC**

ATGGGGTTGGCACAAGGAGCTTGGCACTGGGCTGCATGGCCATCGTGTGGTTCTACAGGAGACCATGG  
 CAGAGTACCCAGCTGGATGTTGAATGGCAAGGCCAGGTGTTCTCAGACCTGAGCATCCAGGAGATGGA  
 GGCTGTGCACAGCTTCTGATGGGCAGGACGGAGCTGGAGCTGCAGCCATCCGGCACACAGGCTTTGGAC  
 AAGAATTCTGTGTTCTCATTGAGACTCTGCTGCCAACAAGAAGGTGGTCTAGAGTTTCTGAATAAAG  
 GAACAGACCTCCTGTGCGGGAAGCCCGTGCATCATTTTTCTTTAGTCCCAGGAGCACCCCAATGTCAC  
 CGAGTTTGCTGTAGGGCCCTGCCACAGCCATCTACATGAGAGAAGTGTCCAGGCCAGAGAACAACAT  
 CGATCTGGGCATCCAGACCCATGTCCAAAGCAGAGCAAAAGCCTTCTACCACAAAATCAAGGAGGCCA  
 CCACACCCTTAAAGGGGTTTTCTTGACACCACTGGCTTCTCATTAGAGGACTGCAATGGCCAGTGTCT  
 GACCTTACCCATGTGGCCCCCATAGTGTGGAGTCTAGACATCGGGCCACCTGGTTCTCTGCAGCGC  
 ATTGTAAGATCGCTGCTACAACCACAGGTCTGGAGGTCTTGTGGATCATGGGAGCACAGATATCC  
 GAGACTGGAGAGTAGAGCAGGTCTGGTATAATGGGAAGCTCTACAGCAGCCAGAGGAACTGGCTCAGAA  
 ATATGCAGATGGAGAAGTGGACACGGTGGTCTCAAGGACCTGCGTCCCAAGAACACAGAGCTGCCACAA  
 GTCTTTAAACAAGCCTGGTGGGAAATTCGCAGCGCCCTCAGAAAACTGGGCCCCATGTGAACAAGCCA  
 ATGATCCAGATACCACCTAGAGGTAACACTGTGATCTACAAGACTGGAGTTTCTCCTTCCAGCTTCG  
 ACCATCTTCTGGGCTGCAGATATTGAATGTCACTTCCAGGAATGAGTATATAGCCTATGAGATTGGCGTG  
 CAAGGTGCTATGGCTGTGCATAGAGAAAAACACCTGCAGGAGAACTGACCAAAACCATGGATCTAGGCT  
 GGAGCTGGGCACGTAACTCACGAGTTAGCCCTGGCATCAACTGTCCAGAGACAGCCACCTTCTTAGA  
 CGTCATCCACTACCATGGCACTGATGGCCTGTCCGTTATCCACGAGCCCTCTGCCTTTTGGATACCC  
 ACAGGGGTGCCTGTTAGGCCTACCTTTAACACAACTCTGCAGGCAAAATCAACTTCTTTTTCAGATGTA  
 TGGGACAAAACTGGTGTACGGGCAACCTCAGCGCTCTACAATTTTGATTACATCTGGGACTTCATCTT  
 CTATACTACGGCACGATCTCAGCCAAGATGCATGCCACAGTTACATCCACACCACCATCTATACCCGT  
 GAAGGATTGAGAGAACTCACCTGCTGACTCACCAGCTTGGCCACAGCCACCCACCTTGTGCATTACC  
 GTGTTGACCTGGATGTGGCAGGCACCAACAACAGCTTCCACACACTGCAGGCCAAGCAGAAAAACACCAC  
 CAACTCCAGCAGCCCAAGACGCTGGTACAGGACGTGATGGAGAAGACACAGTATCCAGGAGCGCCAG  
 GCCACCTTCTCCTTTGGACAACTCTGCCTTCTTCTGCTCTTTAGCAGCCCCAAAAGGACATCTGGG  
 GATACCGGCGCAGCTATCGCTTAAAGATCTACTCCACATCTGAGCAGAGGCTGACCCCTGAAACCCAAGA  
 GGACTTGGCTTTCAGCTGGGCCGGTACTCCCTGGCAGTGAGCAAACTCAGACTCTGAACAGTACAGC  
 ACCAGCATCTACAACAGAATCACCCCTGGGATCCCTGTGGTCTTTGAGGATTTCTTCCAGGACAGTG  
 AGAATATTGAAGACCAGGATTTGGTGGCTGGGTGACAGTAGGCTTCTCTCATGGGCCCACTCTGAAGC  
 TGCTCCATATATGGCCTCGTCTAGGAACCTCGTAGGCTTTTTGCTCCTGCCTTTCAACTTCTCTATATC  
 ACTGAAAAACATCCAGTACAAGTCCACAGATATATCTGACACTGGATCCCTGGGGCAGGGTCTGGC

**ACGCGT**ACGCGGCCGCTCGAG - GFP Tag - GTTTAA

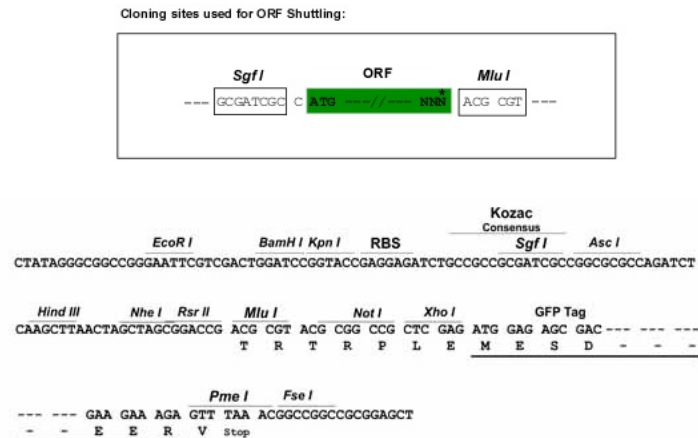
**Protein Sequence:** >MG214722 representing NM\_001029987  
 Red=Cloning site Green=Tags(s)

MGLAQRSLALGCMAIVLVLQETMAEYPSWMLNGKAQVFSDL SIQEMEAVHSFLMGRTELELQPSGTQALD  
 KNSVFLIETLLPNKKVLEFLNKGTRPPVREARV IIFSAQEHPNVTEF AVGPLPQPIYMREL FPRPEKH  
 RSWASRPMSKAEQSLLYHKIKEATTPKGFFLD TTGF SLEDCNGQCLTF THVAPHSVESRHRATWFLLR  
 IVKDRLLQPTGLEVLVDHGSTDIRDWRVEQVWYNGKLYSSPEELAQKYADGEVDTVVLKDLRPNKTEL PQ  
 VFNKPGGKFAAPLRKSGPHVKQANDSRHYLEGN TVIYKDWFSFQLRPSSGLQILNVHFRNEYIAYEIGV  
 QGAMAVHREKTPAGELTKTMDL GWSLGTVTHELAPGINCPETATFLDVIHYHGTDGPVRYPRALCLFEIP  
 TGVPVRPTFNTNSAGKINFFSDVMGHKLVLRATSALYNFDYI WDFIF YTTGTISAKMHATGYIH TTIYTR  
 EGLRETHLL THQLGHSHTLVHYRVDLDVAGTNN SFHTLQAKQKNTTNSSPRRLVQDVMKQTQYSQERQ  
 ATFSFGQTLPSFLLFSSPKKDIWG YRRSYRLKIYSTSEQR LTPETQEDLAFSWARYSLAVSKYSDSEQYS  
 TSIYNQNHWPDPVVFEDFLQDSENIEDQDLVAWVT VGF SHGPHSEAAPMASSRN FVGFLLLPFNFFYI  
 TEKHPATSATDISDTGSLGAGSA

**TRTRPLE** - GFP Tag - V

**Restriction Sites:** SgfI-MluI

**Cloning Scheme:**



**ACCN:** NM\_001029987

**ORF Size:** 2169 bp

**OTI Disclaimer:** The molecular sequence of this clone aligns with the gene accession number as a point of reference only. However, individual transcript sequences of the same gene can differ through naturally occurring variations (e.g. polymorphisms), each with its own valid existence. This clone is substantially in agreement with the reference, but a complete review of all prevailing variants is recommended prior to use. [More info](#)

**OTI Annotation:** This clone was engineered to express the complete ORF with an expression tag. Expression varies depending on the nature of the gene.

**Components:** The ORF clone is ion-exchange column purified and shipped in a 2D barcoded Matrix tube containing 10ug of transfection-ready, dried plasmid DNA (reconstitute with 100 ul of water).

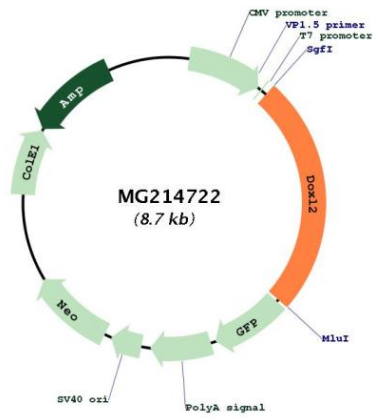
- Reconstitution Method:**
1. Centrifuge at 5,000xg for 5min.
  2. Carefully open the tube and add 100ul of sterile water to dissolve the DNA.
  3. Close the tube and incubate for 10 minutes at room temperature.
  4. Briefly vortex the tube and then do a quick spin (less than 5000xg) to concentrate the liquid at the bottom.
  5. Store the suspended plasmid at -20°C. The DNA is stable for at least one year from date of shipping when stored at -20°C.

**Note:** Plasmids are not sterile. For experiments where strict sterility is required, filtration with 0.22um filter is required.

**RefSeq:** [NM\\_001029987.2](#)

RefSeq Size: 2288 bp  
 RefSeq ORF: 2172 bp  
 Locus ID: 243376  
 Cytogenetics: 6 B2.3

**Product images:**



Circular map for MG214722