

## Product datasheet for **MG214719**

### Ap5b1 (NM\_001033448) Mouse Tagged ORF Clone

#### Product data:

Product Type:	Expression Plasmids
Product Name:	Ap5b1 (NM_001033448) Mouse Tagged ORF Clone
Tag:	TurboGFP
Symbol:	Ap5b1
Synonyms:	Gm962
Mammalian Cell Selection:	Neomycin
Vector:	pCMV6-AC-GFP (PS100010)
E. coli Selection:	Ampicillin (100 ug/mL)



[View online »](#)

**ORF Nucleotide Sequence:**

>MG214719 representing NM\_001033448  
 Red=Cloning site Blue=ORF Green=Tags(s)

TTTTGTAATACGACTCACTATAGGGCGGCCGGGAATTCGTCGACTGGATCCGGTACCGAGGAGATCTGCC  
 GCC**GCGATCGCC**

ATGGGGCCCTAGGTCGAGAAGCCTGGGCCAGCGCCTGGGGCCTTCCGAGCCAGCCCATCCGCCCTTTC  
 TGGCAGGTGCCGAAGGTGAGGATTTGGGTCGCGACCTGTTGAGTGACCTAAGGAGTGAAAAGCTAAGCGA  
 GCAGACCAAGGTTTCCTTACTGACACTGAGCTTGGAGTACTCTGATAAACTTTGGCCTGATGCACCTGCC  
 GCGGAGGCTGCTGCCACTTCCCTGTTGGACACGCTTGTCTCCTGCCACAAGACCTTCAGCTCTCCGGA  
 GGCTCCTGTTGTTGGCAGCCACTACAGCCCTGGTGTGAGGAGATGCTCTCGGACCCACTTCGGGAGCTTC  
 CTGCCGGCTTCTGCCCTTACTTCTGGCTTAGCTTCAGGCCGAGACTTGGGACGAAGCTTGAACCCCT  
 TCAGAACAGCGCCATCTACAGGCCACAGCCTGTGAATGCCTTGGAGAACTTGAAGCCTGGGC  
 TGCTGGCCGGCGCCCTGGGGATGCTGCGGAGCCTCCCAGGGCAAACAGGTCCCATCCAGCCTGTCAGCCT  
 GCTTCTGGCCCTTGTCTACACGACACCTTGGTGGTACAGTCCAGGTCTGGGGCTGGCCTGCAAGGCCTG  
 CTGGTGGCTGAGGACTTCTCCACTGGGAGTTGTCCCTGGGACTGGACCCTGGCTGAGGAATGGGATGCC  
 ATCTTAAGCCCCAGGGGCCAGCTGGCCACAGCTGGGGAGGAGGAGCGTGGCTTCCGGTCTAGAGCC  
 CAGCCCCGAGGACGCCGAGAGCTGAAGGCTGCCGTGGCCAGCTTCTGGACACTTCTATCTGCTCACT  
 CCTGTGGCTCAGGCTCAACTTCTGTGGCTGTTGGGCTGGGCCCTCCGGGGTCTTCGGGGACAGCCACCAG  
 TGCTTTTCAAGCCACAGCTGGTTCGGCTGCTGGGCACGGCACAGCTGACACTGTTACACTCAGTTCTGTC  
 TCTGAAGCGGCCCTTGGCGAGGCCCTGTTCACTGCACAGGATGAAGCTCTGCTCCTCCGAGGCTCACC  
 TTGGGAGCCCAGCACCCAGCTTTACCCTCGCCACACACCTCTTTTACCTGCATTGCATCTGAGCTTCC  
 CCGAGAAATTGCCACTAGGTCCAGAGGGGGAAGAGGCTGCCCCGCTGCTGTTGGGGCCCCAGCTGGCCG  
 GGGCCTCATGCCAGTCTCCTTCATGACCCAACGGTTCTCCTGGCCCGCTGCATTTGCTGTCTGCTC  
 TGTGCTGACGATGAGGAAGAGGAGAAAGACCAGACTCAGGGCCACAGTGGTTCCTACAGGAGGTGCTGG  
 CTGGGCTACAGCAAAGGGCAGCCCTGGATGGTGGTCCCCGGGCCTTGGCCACTCTCTGTTTCCAAGCCTC  
 ATACCTTGTACTAACTGCCTGACTAGACACTCCACAGTACAGACATTTTATCCGCGGACTGGCCAA  
 CTGTACCAGCTCGGCCCTCCCTGGCACCCCACTTTGTGGACCTTAGATCAGGTAAGCCCTGAGCTGA  
 GAGAGCCCTCAGGGAGGTGCTGCTCAAGAGGCGGTGGCCAGGCCAGGCGAGAGCGAAGCCCTTGTCTG  
 GCACCTGCAGATGCTGGCAAAGGTGGCAGAGGGGCCACTCAGAGTACCACACTCAGCTTCTACAGGCT  
 GCAGCTGTGCACTGCACCGACTGGGGCCTCCACCAGGCCCTACTGCGGGTGTGCCGTGCTGCTGCGGA  
 CAGGGCGGGGAGATGGTCTGGCCAACTTCTGTCAGGAAGTGGCCAGACAGCTAGAGAATGCTGACGGACG  
 GGACCATGCCCGACTATACTATGTCCTTGTGCCATCTGTCAAGTTCGAAGTTGGGGATGGCGCTGGGC  
 CCCTCACTGGCTGCACCTGCCTGCTACTAATGGCGGAGAACCAGGGCTTCTCATCAGCACTGA  
 TGGTGCAGGAGACCTCAGCCCCAATTCAGTTGAGTGTGGGGCCTCAGCAGGCCAAAGGCCCGCTCCCGGT  
 GCTGTGCTGCAGGTGCAGGCACTGGATGCTCCCGTCTACTCGTGGAGCTGCGCTTCCGTGTGGAAGGA  
 CAGCTCTATGAGCCGTTGGAGGCTGTCCACATACCCTGCTTGGTCCGGGACAACCTGCGCATCCTCTGT  
 ACCTGCTTCTGCAGCCCCGATGCCAGCCCTGCCCGCTACACGTCCGGGCCCTTACAGCACATCCGC  
 TGGCCTCAGTGCCATGCCCGCCTGCCACCCCTGTCTGTGAACCTTGTGACCTTCTCCTGCCTTTCCCC  
 CGGCTCCCTAAGGGCTCTGAGTTGCGTTTCTTCGATGAGCTCTGGAACCTCCTGCCTACCAAAGGGCGTAG  
 AGAGCCGTGTGTGGTGTCCACTTGGGCAGCAGGGCCTGGAGGCCTTGGTGTCCCAGTACCTAGAGCCCTT  
 TGTAGTGTGGCTCAGCCCCCTACCACCTACCTCATAGCCATCCGCTGCCTCCTGCCTCCATGCTGCTG  
 CTGCGCCTGGAGAAAGCTCAGGTGGATGGTGTGCTGTAGCCCTAAGGACTGATGACTGGGCTGTGCTGC  
 CCCTGGTAGGGACTACCTCCGCGGCTTGCAGCCAC

**ACGCGT**ACGCGGCCGCTCGAG - GFP Tag - GTTTAA

Protein Sequence: >MG214719 representing NM\_001033448  
 Red=Cloning site Green=Tags(s)

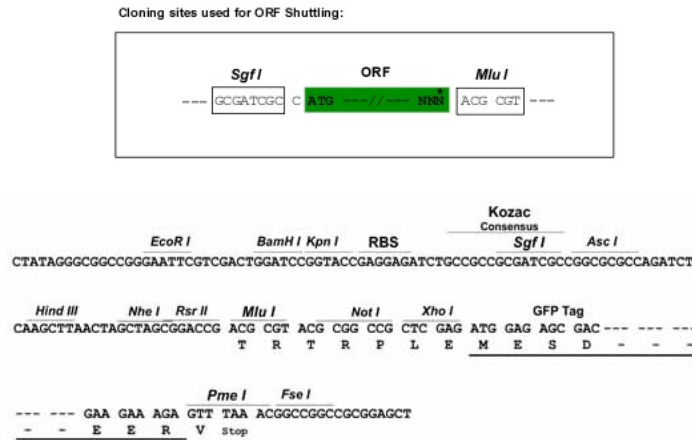
MGPLGREAWAQRLLGAFRASPSAFLAGAEGEDLGRDLLSDLRSEKLSEQTKVSLLTSLSEYSDKLWPDAPA  
 AEEAATSLLDTLVLLPTRPSALRRLLLLAATTALVSGDALGPTSGASCRLPLLLGLASGRDLGRSFGTP  
 SEQRHLQATACECLGELERCKPGLLAGALGMLRSLPGQTGPIQPVSLLLALVLHDTLVVQSRSGAGLQGL  
 LVAEDFSTGSCPWDWTLAEEWDAHLKPQGPSWPTAGEEERGFPVLEPSPEDARELKAAVAQLLDTSYLLT  
 PVAQAQLLWLLGWALRGLRGQPPVLFKPQLVRLLGTAQLTLLHSVLSLKAAFGEALFTAQDEALLRRLT  
 LGAQHPALPSPTHLFYLHCILSFPENCPLGPEGEEAAPLLLGPQLCRGLMPSLLHDPVLLARLHLLCCL  
 CADDEEEEKQDQTQGPQWFLQEVLAGLQQRaalDGGPRALATLcfQASYLVtnCLTRHSTVQTFLIRGLAQ  
 LYRARPSLAPHFVDLLDQVSPELREPLREVLLQEAVARPGESEALCWHLQMLAKVAEGATQSTTSLFQA  
 AAVHCTDWGLHQALLRVCRAALLRTGGDGLANLLQELARQLENADGRDHARLYYVLLSHLSSSKLGMALG  
 PSLAAPALASSLMAENQGFSSALMVQETSAPIQLSVGPQQAkGPLPVLCVQVQALDAPVYSLELRFVVEG  
 QLYEPLAVHIPCPRGQPAHPLYLLLQPRCPAPARLHVRYALYSTSAGLTCHARLPPLSVNFADLFLPFP  
 RLPKGSSELRFDELWNSCLPKGVESRVWCPLGQQGLEALVSQYLEPFFVLAQPPTTYLIAIRLPPASMLL  
 LRLEKAQVDGVPVALRTDDWAVLPLVGDYLRGLAAH

TRTRPLE - GFP Tag - V

Restriction Sites:

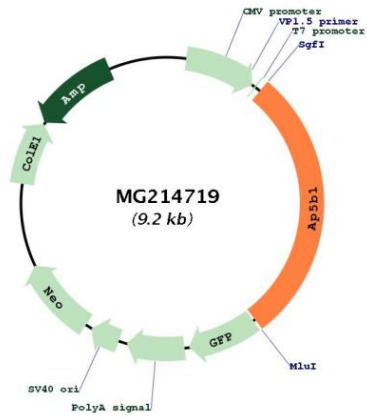
Sgfl-MluI

Cloning Scheme:



<b>ACCN:</b>	NM_001033448
<b>ORF Size:</b>	2628 bp
<b>OTI Disclaimer:</b>	The molecular sequence of this clone aligns with the gene accession number as a point of reference only. However, individual transcript sequences of the same gene can differ through naturally occurring variations (e.g. polymorphisms), each with its own valid existence. This clone is substantially in agreement with the reference, but a complete review of all prevailing variants is recommended prior to use. <a href="#">More info</a>
<b>OTI Annotation:</b>	This clone was engineered to express the complete ORF with an expression tag. Expression varies depending on the nature of the gene.
<b>Components:</b>	The ORF clone is ion-exchange column purified and shipped in a 2D barcoded Matrix tube containing 10ug of transfection-ready, dried plasmid DNA (reconstitute with 100 ul of water).
<b>Reconstitution Method:</b>	<ol style="list-style-type: none"><li>1. Centrifuge at 5,000xg for 5min.</li><li>2. Carefully open the tube and add 100ul of sterile water to dissolve the DNA.</li><li>3. Close the tube and incubate for 10 minutes at room temperature.</li><li>4. Briefly vortex the tube and then do a quick spin (less than 5000xg) to concentrate the liquid at the bottom.</li><li>5. Store the suspended plasmid at -20°C. The DNA is stable for at least one year from date of shipping when stored at -20°C.</li></ol>
<b>RefSeq:</b>	<a href="#">NM_001033448.3</a>
<b>RefSeq Size:</b>	3092 bp
<b>RefSeq ORF:</b>	2631 bp
<b>Locus ID:</b>	381201
<b>UniProt ID:</b>	<a href="#">Q3TAP4</a>
<b>Cytogenetics:</b>	19 A
<b>Gene Summary:</b>	As part of AP-5, a probable fifth adaptor protein complex it may be involved in endosomal transport.[UniProtKB/Swiss-Prot Function]

Product images:



Circular map for MG214719