

Product datasheet for **MG214690**

Pcdh11x (NM_001081385) Mouse Tagged ORF Clone

Product data:

Product Type: Expression Plasmids
Product Name: Pcdh11x (NM_001081385) Mouse Tagged ORF Clone
Tag: TurboGFP
Symbol: Pcdh11x
Synonyms: A230092L07Rik; PCDHX; PCDHX11
Mammalian Cell Selection: Neomycin
Vector: pCMV6-AC-GFP (PS100010)
E. coli Selection: Ampicillin (100 ug/mL)
ORF Nucleotide Sequence: >MG214690 representing NM_001081385
Red=Cloning site Blue=ORF Green=Tags(s)

TTTTGTAATACGACTCACTATAGGGCGGCCGGAATTCGTCGACTGGATCCGGTACCGAGGAGATCTGCC
GCCCGGATCGCC

ATGGACTGTGTCCGGGACGTATATATTTGCGGTCTGTAGCATGCGTCGTGTTTCAGTCTGGCGCC
AGGAGAAGAATTATACAGTCCGAGAAGAAATGCCAGAAAACGTCCTGATAGGCGACTTGTGAAAGACCT
CAACTTGTGCTTATCCCGACAAGTCTTAACCACTCCTATGCAGTTCAAATTAGTTTACAAAACCGGG
GATGTACCATTGATTGCGATTGAAGAGGGTACTGGAGAGATCTTCACTACTGGTGCACGCATTGATCGT
AGAAATTATGTGCTGGAATCGTGTGGATGCCCGTTGCTTTACGAAGTGGAGGTTGCTGTTTTGCCGGA
TGAATATTTGATTGGTTAAGATACGCTTTCTGATTGAAGACATAAATGATAATGCACCGTTATCCCA
ACAACTGTCATCAACATATCAATTCGGGAGAACTCGGCTATAAACTCTCGATATTCTCTCCAGCAGCCA
TTGATCCTGACATTGGAATAAATGGAGTCCAAAATACCAACTAATTAAGAGTCAAAATATTTCCGGACT
TGATGTCATTGAAACACCAGAAGGAGACAAGATGCCCAACTGATTGTTCAAAGGAGTTAGATAGAGAA
GAGAAGGATACCTATGTGATGAAAGTAAAAGTTGAAGATGGTGGCTTTCTCAAAGATCCAGTACAGCTA
TTTTGCAAGTAAGTGTGCTGATACAAACGACAATCACCAATCTTCATAGAAAAGGAAATGAAGTCAG
TATACCAGAAAATGCTCCTATAGGTTCTTCAGTGACACAGCTCCATGCCACAGATGCAGATATAGGTGAG
AATGCCAGAATTCACCTTTATTTACAGAACCTAGTCTCAACATCGCTAAGAGACTGTTTCATCTAAACA
CCACTACTGGACTTATCACTGTCAAAGAACCCTGGATAGGGAAGAATCACCAAGTCACAAGTTATTGGT
TTTGGCAACTGATGGTGGATCAACACCAGCAAGAGCAACGGTGGTAAATGTCACAGATATCAATGAT
AATGTCCCATCAATTGACATAAGATACATTGTCAATCCAACCAATGGCACTGTGCTTCTTTACAGAAATG
CTCCACTTAACACTAAAATTGCTCTCAACTGTGATGGATAAGGATTCTGAACATAATGGTAGGGTGAC
ATGCTTACAGATCATGAAGTTCCTTTACAGATTGCGACCAGTATTCAGTAATCAGTTTCTTTGGAGACT
GCTGCATTTCTGACTTTGAGTCCACAAGAGAATATGCCATAAAATTAAGCCGCTGATGCTGGCAAAC
CTCCTTTGAATCAGTCATCCATGCTCCTGATCAAAGTAAAAGATGAAAATGACAATGCTCCAGTTTTCAC
CCAGTCTTTCATAAGCCTTTCTGTTCTGAGAATAACTCTCTGGTGCACAGTTGACAAAATCAGTGCA



[View online »](#)

ACAGATGCAGACAGTGGACAGAATGCTGAAATAAGCTACATGCTAGGTTTTGATGCACCACCTGAATTCA
ATCTGGATCAACGTACTGGCATCCTGACTGCAGTGAAGAACTAGATAGGGAAAAACAGGAAAAGTATTA
CTTTACAGTTTTGGCACAGGACAATGGAATTCACCCCTAATGTCCAATGCCACTGTATTTGTGACTGTT
CTTGACCAGAATGATAATAGCCCAATTTCACTCATAATGAATATAAATTCTATGTTCTGAAAGCCTTC
CAAAACATGGCACAGTAGGGCTAATAACTGTGACTGATCCTGATTACGGAGAGAATTCTGCAGTTACCT
CTCCATCTTAGATGTGAATGATCAATTCACTATTGATCCACAGTCTGGTGTATCAGGCCAAATATTTCA
TTTGACAGAGAAAGACAAGAATCTATACTTTCTATGTAAAAGCTGAGGATGGTGGTAGGGTATCACGTT
CTTCAACTGCTAGAGTAACCATAAATGTGGTTGATGTCAATGATAACAAACCAATTTTTATTGACCCTCC
TTCCAATTACTCCTTTGAATGGGTTCTACCATCCACAAACCCTGGCACAGTTGTCTTCAAGTTGTTGCA
ATTGACGATGATATTGGCATGAATGCAGAGGTTCTTTACAGCATTGTTGGAGGAAATACAAAAGGACTGT
TTATGATTGAACAAACATCAGGTAACATCACATTGAAGGAGAAGTGCATGGTTTCAGATCTTGGTTTACA
CCGAGTCATAGTCAAAGCTAATGATTTAGGACAACCTGATTCTCTCTTCAATGTTGTAATGTCAATTTT
TTTATAAATGAGTCCGTGCCAATGCCACACTGATTTATGAAGTGGTGCAGAGAAGCATTGATGCACCTG
CCAATCAAATACTGAAACAACCAAGTGCATCCTACCAACCACTGACTATGTCAAGATCATGGTTGCCAT
TGTGGCTGGCACCATAACTGTTGCTAGTTATTTTCATCACTGCTGTAGTAAGATGCCGCCAACCA
CATCTTAAAGGCTTCTCAGAAAAACAACAGAATCTGAGTGGGTTACTCCAAACCCAGAAAAACAGGCAGA
TGATTATGATGAAGAAGAAGAAGAAAAAGAAGAAGCATCCCCCAAGAACTGCTGCTTAATTTTGT
CACTATTGAAGAAGCAAAGCCAGATGACGGTGAATGAGAGAAACAGTGTCACTAGATCTTCCAATT
GAGCTGGAAGAGCAAACCATGGGCAATACAACCTGGGGCACTACACCTACTACTTTCAAACCTGATAGCC
CTGATTTGGCTCGACACTACAAATCGGCCCTCCTCAGCCTGCATTCCAGATCCAGCCTGAAACGCCCT
GAACTCAAAGCACCACATCATTGAGCACTGCCTCTTGATAATACCTTCGTTGGCTGTGATTCCATCTCC
AAGTGCCTCCAGCAGTCTGATCCCTACAGTGTTCGAGTGTAGTATCCAGGGGAGATAAGACCT
TTGGACAGCTCATTCAAGGCAGTTGAATTCATTCAATCAGTCAGATGATGTTCTCTTTCCACAAAA
ATGTAAAAACTCATGGGGATTCAGGGTCCAGGTTAACAATGAATCTAATTATGATTTCCAGAGACGTGTC
ACATTTACCTACCAGAAGGCTCTCAGGAAGCATCAGTGTGGTGGATTGGGAGACCAGATGCAGGCA
GCCTTCCAGTACATCCCATGCACTGCCTCTTGCTATCCTCAGGAAGAGTATTTTATGATCATGCTGCACC
AAACAACCGCACTGAAGGGGATGGCAACTCTGATCCTGAATCTACTTTTATTCTGGACTAAAGAAAGCT
GCAGAAATAACAGTGCAGCCAACCTGTGGAAGAAGCCTCTGATACCTGTACTCAAGAATGCCTCATCTTGG
GACACTCTGACTCCTGCTGGATGCCAGCTACTTTGACCAATCCTAGCCCTTACAGATAAAGACCTCTGC
TATCTGCCACAGCCACCAGGCCCGCTTGTGAGTTCGTCGCTACAGCCCTCCAGTGCACAGACGGTC
ACTATTTGCCACAGCCCCCTGTGACCCAAGCTATTGCACTGTGTACAGCCCTCCACCAGTACAGGTTA
CTGTACCCCGCCATAGTCCACCACCAGCACAGGCCCTCTGCAGTCAGCTACAGCCCACTAGTACAGGC
TGTGGTAATTCACCACAGTCTCCTCTGCCACAGGCTGCCACACACCATCGCACTCAGGCACAACCACCA
ATGGGTTTGCAGCAGGGATGGGTGCAGGGTGTGGAGCAGATGGACTGTATCCTATTGATCAGGGAGTAC
AGGGCAGTACAAGAGCTCAGTTTACACCATGGCTGAAAGATTTTATCCCGATGATGACTCAATTAAGT
CATTCCCTTGACCACCTTACTTCAGGTCAACAGGCCAGATCCTCAAGAGGTGATTCTCCAATCATAGAG
GAACACCCCTTG

ACGCGTACGCGGCCGCTCGAG - GFP Tag - GTTTAA

Protein Sequence: >MG214690 representing NM_001081385
 Red=Cloning site Green=Tags(s)

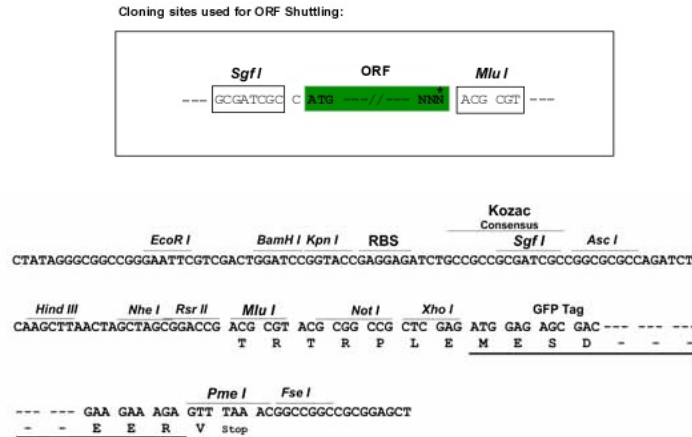
```
MDLLSGTYIFAVLLACVVFQSGAQEKNYTVREEMPENVLIGDLLKDLNLSLIPDKSLTTPMQFKLVYKTG
DVPLIRIEEGTGEIFTTGARIDREKLCAGIVLDARCFYEVEVAVLPDEIFRLVKIRFLIEDINDNAPLFP
TTVINISIPENSAINSRYSLPAADDPDIGINGVQNYQLIKSQNIFGLDVIETPEGDKMPQLIVQKELDRE
EKDITYMVKVVEDGGFPQRSSTAILQVSVADTNDNHPIFIEKEIEVSIPENAPIGSSVTQLHATDADIGE
NARIHFYFNLVSNIAKRLFHLNNTTGLITVKEPLDREESPSHKLLVLATDGGSTPARATVLVNVTDIND
NVPSIDIRYIVNPTNGTVLLSENAPLNTKIALITVMDKDSEHNGRVTCFTDHEVPFRLRPVFSNQFLLLET
AAFDFESTREYAIKLLAADAGKPLNQSSMLLIKVKDENDNAPVFTQSFISLSPENNSPGAQLTKISA
TDADSGQNAEISYMLGFDAPPEFNLQRTGILTAVKKLDREKQEKYYFTVLAQDNGIPPLMSNATVFTV
LDQNDNSPIFTHNEYNFYVPESLPKHGTVGLITVTDPDYGENSAVTLILDVNDQFTIDPQSGVIRPNIS
FDRERQESYTFYVKAEDGGRVSRSTARVTINVVDVNDNKPIFIDPPSNYSFEWVLPSTNPGTVVFKVVA
IDDDIGMNAEVLYSIVGNTKGLFMIEQTSGNITLKEKCMVSDGLHRVIVKANDLGQPDLSFNVVNVNF
FINESVPNATLIYELVRRSIDAPANQNTETTSASSPTDYVKIMVAIVAGTITVVLVIFITAVVRCRQPP
HLKASQKNKQNSEWVTPNPENRQIMMKKKKKKKKHPKNLLNFVTIEEAKPDDGENERNSVTLDLPI
ELEEQTMGKYNWGTPTTTFKPDSPDLARHYKSASPQPAFQIQPETPLNSKHIIQELPLDNFTVGCDSIS
KCSSSSDPYSVSECSYPGGDKTFGPAHSRQLNSFNQSDDVPLSPQKCKNSWGRVQVNNESNYDSQRRV
TFHLPEGSQESISDGGLDGDHAGSLPSTSHALPLGYPQEEYFDHAAPNNRTEGDGNSDPESTFIPGLKKA
AEITVQPTVEEASDCTQECLILGHSDSCWMPATLTNPSPSQIKTSAICHSPRPRLSVRRYSPPVTQTV
TICHSPPVTAIALCHSPPPQVTVPRHSPPPAQASAVSYSPTLVQAVVIHHSPLPQAATHHRTQAQPP
MGLQQGWVQAGADGLYPIDQGVQGSTRAQFYTMAERFHPDDDSIKVIPLTFTSQQARSRRGDSPIIE
EHPL
```

TRTRPLE - GFP Tag - V

Chromatograms: https://cdn.origene.com/chromatograms/ja1779_h08.zip

Restriction Sites: SgfI-MluI

Cloning Scheme:

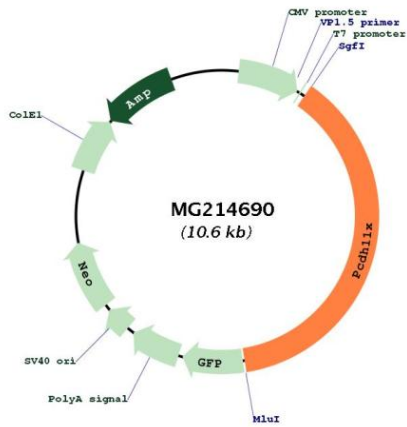


ACCN: NM_001081385

ORF Size: 4002 bp

OTI Disclaimer:	<p>Due to the inherent nature of this plasmid, standard methods to replicate additional amounts of DNA in E. coli are highly likely to result in mutations and/or rearrangements. Therefore, OriGene does not guarantee the capability to replicate this plasmid DNA. Additional amounts of DNA can be purchased from OriGene with batch-specific, full-sequence verification at a reduced cost. Please contact our customer care team at custsupport@origene.com or by calling 301.340.3188 option 3 for pricing and delivery.</p> <p>The molecular sequence of this clone aligns with the gene accession number as a point of reference only. However, individual transcript sequences of the same gene can differ through naturally occurring variations (e.g. polymorphisms), each with its own valid existence. This clone is substantially in agreement with the reference, but a complete review of all prevailing variants is recommended prior to use. More info</p>
OTI Annotation:	<p>This clone was engineered to express the complete ORF with an expression tag. Expression varies depending on the nature of the gene.</p>
Components:	<p>The ORF clone is ion-exchange column purified and shipped in a 2D barcoded Matrix tube containing 10ug of transfection-ready, dried plasmid DNA (reconstitute with 100 ul of water).</p>
Reconstitution Method:	<ol style="list-style-type: none"> 1. Centrifuge at 5,000xg for 5min. 2. Carefully open the tube and add 100ul of sterile water to dissolve the DNA. 3. Close the tube and incubate for 10 minutes at room temperature. 4. Briefly vortex the tube and then do a quick spin (less than 5000xg) to concentrate the liquid at the bottom. 5. Store the suspended plasmid at -20°C. The DNA is stable for at least one year from date of shipping when stored at -20°C.
RefSeq:	<p>NM_001081385.1, NP_001074854.1</p>
RefSeq Size:	<p>4480 bp</p>
RefSeq ORF:	<p>4005 bp</p>
Locus ID:	<p>245578</p>
Cytogenetics:	<p>X E2</p>
Gene Summary:	<p>This gene encodes a member of the protocadherin family, and cadherin superfamily, of transmembrane proteins containing cadherin domains. The encoded protein may mediate cell-cell adhesion in neuronal tissues in the presence of calcium. Alternatively spliced transcript variants have been observed for this gene. [provided by RefSeq, Nov 2012]</p>

Product images:



Circular map for MG214690