

Product datasheet for **MG214689**

Mms22l (NM_199467) Mouse Tagged ORF Clone

Product data:

Product Type:	Expression Plasmids
Tag:	TurboGFP
Symbol:	Mms22l
Synonyms:	F730047E07Rik; Gm134
Mammalian Cell Selection:	Neomycin
Vector:	pCMV6-AC-GFP (PS100010)
E. coli Selection:	Ampicillin (100 ug/mL)

ORF Nucleotide Sequence: >MG214689 representing NM_199467
Red=Cloning site Blue=ORF Green=Tags(s)

TTTTGTAATACGACTCACTATAGGGCGGCCGGGAATTCGTCGACTGGATCCGGTACCGAGGAGATCTGCC
GCCCGGATCGCC

ATGGATGGCTGTTTCAGCAGCGTCGACCTTCTTGACTGACAGCTTAGAGCTGGAGCTGGGGACAGAGTGGT
GCAAAACCCCTGCTTTTCTTGCCTTTTGACAACAGAGAAGGAAAATTCTCTGGAGAGTCTACCTTGC
CAGTGGCGCCCTTAAGCGGTTAATTTAAATCTTGATCCATTACCAACTAATTTGAAGAGGATACAGTA
GAACTATTTGGCTTCCAATGGGTTACAGAAACAGCGCTAGTCTATTCCTGTAGAGAGCTCTTTCAATTTAT
TCAGGCAACAGATATTTAACTTGGAGTCTTGGTACAAGTCAGCTGTGATTTTGGGAAAATAGCCACCTT
GCACGCCAAAAGCAGACAGTATTAGGCAACAATGTGTAGTGTTCCTTCACTACATTAAGTTTTTCATCTTC
AGGTGTCTGAAAGTACAGGAAGCAGAGAGCCACAGTCGCCCTGCCCATCCCTATGAGGCTTTGGAAGCCC
AGCTTCCCTCCATGTTGGTCGATGAGCTCCGTGGATTACTTCTGTACATTGGACATCTAGCTGCCTTCC
CAGTGTACTGTAGGAGCGTTTGAAATCAAACCCAGATGAAGCTTCCCTCCATCATGGCATTATTA
CATCTCTATTTAGATACCCACTGGCTGGTGTGGAAACTGTCATATTCTGGGAGAAAAATTGAAACAAG
TTGTTTATGGTCGTCAGTTTATTTGGTCAGGCAGGTGACAAATTAACCAATGTCAGCCTCTTTGAAGAACA
TTGTGAACATCTTTCTGTGACTTAATATGCCTGTCCTCAACAGATTTGACAAGGTCATGCCTTCAGAA
GCACTACTGATTAGTCACTGCCATGCTCCTGTGTTAAAGAATTATGGGTTCTACTTATTCATCTTTAG
ACCACAGAAGGAAATGGTCTGTTGCAGATTCATTTTGAATTGGTTGAATAAACTACTTAGAACCTTTT
TGAAAAGTCAAGTGACCAACGAAGATCTTCTGTGTCTAACCAGGCCAAGGATCCATTAGGCTTTAGT
TGGTGGATTAGTGTTCATGTAGCATATTGTACCAGATTGATGCCATGGTGTGTCAGACAAAATGAAAC
AGATGGAATCCAATTGGAGCTTTATAGAAGAACTTTGAAACGGTCCGTCACTGTTCCAGGATAGTAACT
AGAAGAACAATTGCGAATGCATCTTCATTGTTGTTGACACTTTGTGATTTCTGGGAGCCAAATATTTCA
GTTGTCAACATTTTATGGGAGTATTATTCTAAGAACCTGAATAGCTCCTCAGTATTTCTGGCTTCCCT
TGAAAGGCTTACCAATATTCAAGTCTCCACTGTCGATGCTTACACTGGTGGGAACTGCTGTAGTGA
TAAACAAGCCCTGACCTCTATAAGTCCAGCAGCAGTTACATCATTTTCTTTGCAATTCGGCAAAAGTT
GTTAAGAAAGCAATGAGAACCAGCGCCCTCACCTTGAAGCAAGTTAAAGGAAGAATATATTCTAAGT



TTCATCAAAAAGAATGGAAGAACTAACTGAAGTTGGCCTACAGAACTTTTTCAGCCTTTTCTACTGTT
AGCAGCTGTTGCAGAGATAGAAGATGTAGCAAGCCATGTTTTAGACCTCCTTCGTTTTCTCAGGCCTGCC
TCCATGTCATCTCATGGAGCCCTTGTGGGAAGGTCAGATGGCATTTCCTGATGTATGCCAGAAAA
ACTTGGACATTGGTGTTTGGGCTGAGAACTGTCAATGTGAATCCAAAGAGAAAAGCAAAGGAATCTTGGT
ATCTAAGAATGATGAAATGGTACAGAGACATGCTCTATGGACACTGCTTTCATCTATATTGATGGTGTT
CAAGAAGTATTTGAGACCAGCAGTTGCTTGTATCCTTCTCATGAGCATCTTCTCAATGATGGATTAGCA
TGTTACTGCCAGCCTGTCGAGAATCTGAACTTAGGACAGTCTGAACTTCTACAAGCTGTTCTGGCGAG
AATCAGGAGTGTTATCAGCAATTGTGTCAGGAACTTCAAAGAGAGAATGTGGACCTAACTGTGAGTCT
TCATTATCGGCTAAAGAGCGCCCCCTGGCTGCCGTCGCTGGTGCAGTGTGGAGGCATTTCTTTCCCTTC
TCAAGAGTCAGAGAATGACACAAGTTGTGCCTCTCTCCAGCTTGCAGATGCCGCTGCAGATTTTACTTT
GCTGGCAGTGGACATGCCAAACACAGCACCACCAGATCTTCAGCCACAGCCAGTTATATCAATAATTGAG
CTTTTTGGTTGGGATGATATCATCTGGCCCAAGTTGTAGCAAGATATTTAAGTCATTTGCTACAAAAATA
GCACAGTATATGAAGCACTTTCTCAGTCAAGTTGCGTGTCTTCTCAGTCTTAACTATAAGATCATGGGT
CCGTTGTGTTTTGCAATGCACATAAAACACCTCTCTGACCCTGACTTGTGATTGATGTGAATCCTGAA
CAGGCCGTGAAAAAGAGTACATGGAACAGCTGGCTGAAATGACAAGTACTATTTACACTCTCAGAAG
TAAAGAGTGTCTTCAAAGGCTCAAATAGAGCAATTACCCAGCCAGACGATCCCAAGCAAGCGCTTAT
TCAGTTCCTGGAGGCTGTTGGTGTGACTTACAGGACTCTGCAGACATTTCTGATAAATCTGCCATGGTC
ACAAAGTCTTAGAATACCTTGGTGAAGTATTAATAATAAAGCCTTATTTGGGGAAAAAAGTTTCCA
GTGCAGGGTTGCAGCTGACTTACGGGATAATGGGAATCTTGTAAAGTCATGGGCACACATCTTGGCCAC
CTCTAAAGCACAGAAGTACTTTTTCGGATAATAGACTGTTTGTGCTGCCACATACAGTGTCTACAGCAA
GACAAGGAGCTGCCTGGACCCATGCTGACTGCAATTCAGAAGACGCTTCTCTATCTACAGGGCATAT
GTATTGTATGCTGCCAGTCTCAAAATCCAAATGCCTACTTGAATCAGTTGCTGAGGAATGTCATTGAGCA
GTACATAGGGAGGTTTCTCCAACCTCGCCCTGTGTTTTCAGATCTGGGACAGCACCCCTGTTCTGTTGGCA
CTGAGAAACCCTGCCTCTGTTCCCTCGATGACGCTCTAAGAAAGCACACTGTCCATGCCATAAGGAAAT
CCTACCTTGAGTTCAAAGGCTCCTCACCCCTCCTCGATTAGCATCCGTATTGGCCTTCGTCTTCAGCT
CTTCAAGGACACCGAAATGGGTGCCTGTGACCTTGAGCTGCTCCTTCTGGCATCCTGAAATGTTTGGTG
TTGGTAAATGAACCCCAAGTTAAAAAGCTGGCCACAGAGAACCTGCAGTGCATGGTACAAACCTGCCAAG
TGGGGTCAGAAGGAGGACCTGCCACCCAGCTGACTTCTCTGTTTAGGCAGTTTCCAGGACTATGGTAT
GCAATACAGTTATCAAGTATACAGCATCTAGAGACAGTAGCAACGCTGAATCAGCACGTTGTATCCAA
TTGATTCTACCCTCACTCAGTCTCTGAAGGATTCAGAGCTCAAATGGGGCCTCGGCAGAAATATTGCAC
AAAGGGAAGCATATAGCAGACTTTTATCTGGCTAGGACAGGTAGGACAGGGCGAGAAGCAGAGACTGGA
AAAG

ACGCGTACGCGGCCGCTCGAG - GFP Tag - GTTTAA

Protein Sequence: >MG214689 representing NM_199467
 Red=Cloning site Green=Tags(s)

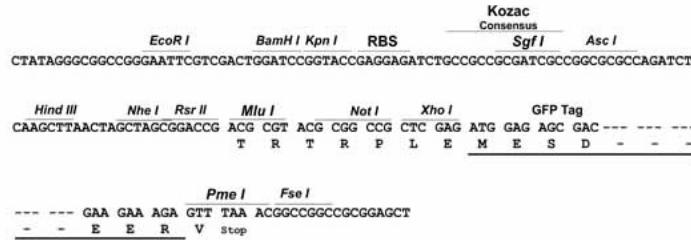
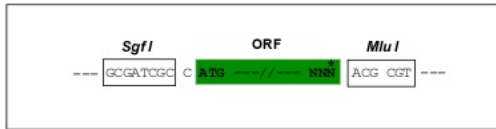
MDGCSAASTFLTDSLELELGTWCKPPCFSCAFDNREGKFSGESYLA SGALKRILNLDP LPTNFEEDTV
 ELFGFQWVTETALVYSCREL FHLFRQQIFNLESLVQVSCDFGKIATLHAKADSI RQQCVVFLHYIKVIF
 RCLKVQEAESH SRPAHPYEAL E AQLPSMLVDEL RGLLYIGHLAALPSVTVGAFVNQNMKLFPPSWHLL
 HLYLDTHWL VLEILHILGEK LKQVYGRQF IGQAGDNL TNVSLFEEHCEHL FCDLICLSLNRFDKVPMPSE
 ALLISHCPCSCVKELWLLIHL LDHRRKWSVADSFWNWLNKLLR TLFEKSSDQRRSSVSLTQAKDPLGFS
 WWISVHVASLYQIDRHGVSDKMKQMESNWSFIEELLKRSVTVQDSILEEQLRMHLHCCLTLCDFWEPNIS
 VVTILWEYYSKNLNSSFSISWLP LKGLTNI IKSPLSMLTLVRNCCSDKQDPDL YKSSSSYIIFLCILAKV
 VKKAMRTSGPHPWKQVKGRIYSKFHQKMEELTEVGLQNF FSLFLLLAAVAEIEDVASHVLDLLRFLRPA
 SMSSHGALVWKGM AFLLMYAQKNLDIGVWAEKLSCEFQEKAKEFLVSKNDEM VQRHALWTL LCIYIDGV
 QEVFETSSCLYPSHEHLLNDGFSMLLPACRESELRTV LNFLQAVLARIRSVHQQLCQELQRENVDLTVQS
 SLSAKERPLAAVAGALWRHFFSFLKSQRMTQVVPLSQLADAAADFTLLAVDMPNTAPPDLQPQPVISIIQ
 LFGWDDI IWPQVVARYL SHLLQNSTVYEAL SQSSCVSSQSLTIRSWVRCVLQMHIKHLSDPDLLIDVNP E
 QAVEKEYMEQLAEMTRLLFTLSEVKS VFSKAQIEQLPSPDDPKQALIQFLEAVGVTYR TLQTFSDKSAMV
 TKSLEYLGEVLKYIKPYL GKKVSSAGLQLTYGIMGILVKS WAHIFATSKAQKLLFRIIDCLLLPHTVLQQ
 DKELPGPMLTAIQKTLPLYLQGICIVCCSQNPAYLNQLLRNVIEQYIGRFLPTSPCVSDLGQHPVLLA
 LRNPASVP SMTPLRKHTVHAIRKSYLEFKGSSPPRLASVLAFLVQLFKDTEMGACDLELLLPGLKCLV
 LVNEPQVKKLATENLQCMVQTQVGS EGGPATQLTSLFRQFIQDYGMQYSYQVYSILETVATLNQHVVIQ
 LIPTLTQSLK DSELKWGLGRNIAQREAYSRLLSGLGQVGGQEKQRLEK

TRTRPLE - GFP Tag - V

Restriction Sites: SgfI-MluI

Cloning Scheme:

Cloning sites used for ORF Shutting:

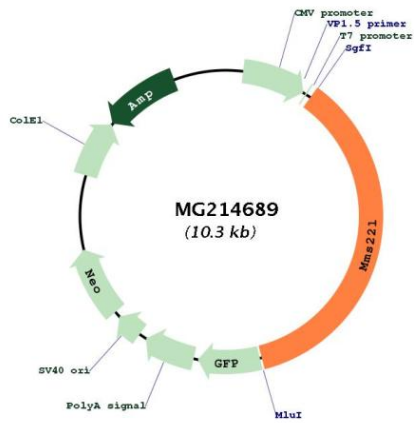


ACCN: NM_199467

ORF Size: 3714 bp

OTI Disclaimer:	The molecular sequence of this clone aligns with the gene accession number as a point of reference only. However, individual transcript sequences of the same gene can differ through naturally occurring variations (e.g. polymorphisms), each with its own valid existence. This clone is substantially in agreement with the reference, but a complete review of all prevailing variants is recommended prior to use. More info
OTI Annotation:	This clone was engineered to express the complete ORF with an expression tag. Expression varies depending on the nature of the gene.
Components:	The ORF clone is ion-exchange column purified and shipped in a 2D barcoded Matrix tube containing 10ug of transfection-ready, dried plasmid DNA (reconstitute with 100 ul of water).
Reconstitution Method:	<ol style="list-style-type: none">1. Centrifuge at 5,000xg for 5min.2. Carefully open the tube and add 100ul of sterile water to dissolve the DNA.3. Close the tube and incubate for 10 minutes at room temperature.4. Briefly vortex the tube and then do a quick spin (less than 5000xg) to concentrate the liquid at the bottom.5. Store the suspended plasmid at -20°C. The DNA is stable for at least one year from date of shipping when stored at -20°C.
Note:	Plasmids are not sterile. For experiments where strict sterility is required, filtration with 0.22um filter is required.
RefSeq:	NM_199467.3
RefSeq Size:	4482 bp
RefSeq ORF:	3717 bp
Locus ID:	212377
UniProt ID:	B1AUR6
Cytogenetics:	4 A3
Gene Summary:	Component of the MMS22L-TONSL complex, a complex that stimulates the recombination-dependent repair of stalled or collapsed replication forks. The MMS22L-TONSL complex is required to maintain genome integrity during DNA replication by promoting homologous recombination-mediated repair of replication fork-associated double-strand breaks. It may act by mediating the assembly of RAD51 filaments on ssDNA (By similarity).[UniProtKB/Swiss-Prot Function]

Product images:



Circular map for MG214689