

Product datasheet for **MG214687**

Catsperd (NM_175350) Mouse Tagged ORF Clone

Product data:

Product Type:	Expression Plasmids
Tag:	TurboGFP
Symbol:	Catsperd
Synonyms:	619718; 4921529N20Rik; 4933402B14Rik; AW045609; Gm6095; Tmem146
Mammalian Cell Selection:	Neomycin
Vector:	pCMV6-AC-GFP (PS100010)
E. coli Selection:	Ampicillin (100 ug/mL)



ORF Nucleotide Sequence: >MG214687 representing NM_175350
Red=Cloning site Blue=ORF Green=Tags(s)

TTTTGTAATACGACTCACTATAGGGCGCCGGGAATTCGTGCGACTGGATCCGGTACCGAGGAGATCTGCC
GCCGCGATCGCC

ATGCTGGTGTGATGCTAGCAGCAGCAGTGGCCACCATGGTCAGGGCTCACACACTGTGCCGGTGCACA
CAGTGAGGACCGGAAAGTGTAAAGTCCAATATAACAATCAAGGGGACCCACTGTCTACGCCTTCCC
CAACACATTTGTGCTCAAGAACGTGTGCAAGGCTGACATTTCTGTGTATCTAGGGCAGAAAGTTTTCTTG
ACGATAGACAACTTTGAGTCCAGCCTCTTGCCGCTCACCGTCCCAAGTCATTGGCGGTGGGGTGCAT
CAATCACAAGCGCCACTTTGTCTCCGGCTCACTAGTACTGTTTGTGATCAGTGAAAAGGCTACAGTTA
CGATTAATGAGAACACCTGGCGTAAATGGAAAGTATATCAGAACCCTGTCTCACATTAAGTGGTGAC
GTTTGTGTTTCAAAGGCTCCTTTGCTGGAGTTATCAAATAACCTGTTTGCATATCTCCGTGGTGGCC
AGATCCCTGGGACCAACATATATTTCTCTGACAATGGAGGATTTTCATTCCAGCTCATGAATACTGACAA
ACTGAGTCACCTGACAGGAACACTAGGAGGCATCTCCACTTACATTCCATGTCTCAGGTGGGGTACTC
ATGGTTGAAAATAATTTGGGCACATTTATTACATGGAGTACCCCTGAACCATAGTATGGGGATAGCCT
TTTCATACAAGAACTCCTTGAAGTCAATGAAACCATAACAGAGGGGGTTTATGGTCTCTGGAATCA
GAAAAGTATATTGGTGTCTCCAATTCAGGCCAGATTGTTGAACACGTGCGGCTGATAGATCAGAAGATC
TTTACAGACTTAGATGTGCAACATGCCAACATCAACATCTACAGTGTTCCTCAAATGCTTACGAGCTGG
CTTTTTGGTAGCAGAAGATCATCTGTAATGGAAGTCAGAGTTACATGGGAACCTATGTAATCAAAT
GCCCATCAGCCTCTCTGGTCTACACACACAAGCATCTACTTTGAGGACATCGGCATACTGCAGGTCTC
ACCCCTGTTGCTGACCCACACTTTCAGCCTATGACTTCGACAAGTGTACAGTGAATGTGCAGTCTCTC
TCATGGATGAAAAGCTGGCGTTCAACCATGTAATGTGGAACCTCTGGAAGCACCATGATAAATACAAT
GTTTACAATAGACATGAATAGCAAGCTGAAACTGTCTGCCCTCATGATACCCCGAAGGGCGAGAACCCT
ACCCCTCTGGTCATGGTCAGCAATCCCATGCCCTGGGGTTAAGGCAAACCTCAATGAGTTTGGCAATA
CGTTTGATGGCAACTCTAAGTACAACCTGGATATTGAACTCAAACAGCAGCATCACTGGGGCAACTCAGA
TTTCAACTTCACTGCCAGCATCAAGCGCCATGCCATCTCTCTGTAACTGGACATAGTGACAAGACA
CTTTCTGTGTGGACCTAAAGCCTCTGTCCACGCTCATCTCAGTTGGCTGTGACATGACAAAAGAAAATTG
TTGTGCAAAAACAAGATCTCCGCTGCACCATGGGAATCCTGAACCCCGTGCAGCTGCAGAAGAACTATAC
TTACACCATTGAGAAGGAAGCATACGATCTATCAACCACAATGGTGAAGCCCAGGATGACCTGATAGTA
TTTTACGAGTACAAGGACCTGGGCTGCCCGCCTAGTCTACTATGACAAGCCGTGGAACCTGTGGTGG
AACTGTGGAAGAAATGGGATTGTAGAAGAAATCATGAACGCAGAGTATGTCACTCGGAGATAAATGGACT
AGTCACCTATTCTACTCCTTGACGGCTGCCACTGCAAACCTGCCGGTGCAGCCCCAGAACTGGAGCACC
TTTGAATCGGATATTGAGAACGAAGAACCCTCTCTGGAACAGAGAGAACTATGTCAGCTGCCACGAAG
ACAACAAGGACAACCCCTGCTATGGCCGAATGTCGAGTATCAGGTCTTAGGTGGCCAGACAAACAACA
GATTATTTTTGGCCAAAAGAAATGGGATCTATACCTTCCATCTGTCTGTGGTAGATCCATACTACAGCTAC
TGCAACCTGAACACCATATTCAGCGTGTACGTGCACGGGGCCTTACCGGTGACGAAGTTCCAACATTGC
TCACCATCTCTGATGGTCACCACAACGCTGCTGACTGCGTGGCTGGCCTATGCTATCCCCAAACAGCT
GAGGAGTGAGAAAGGCCAGCGACTTCTGGGTTTCTGCTACCAGATACTCCAGCTCTGCCTAGGGTCTGC
TTCTGCACCTGGCTGCGTGGCAAACCTGAGACAGTGGCTGCGCCCCAGAAGGGTAAAAGACCAGAACAGAG
GCAAGGTGCGAGTTGCCAGAAACATCCAGAGACA

ACGCGTACGCGGCCGCTCGAG - GFP Tag - GTTTAA

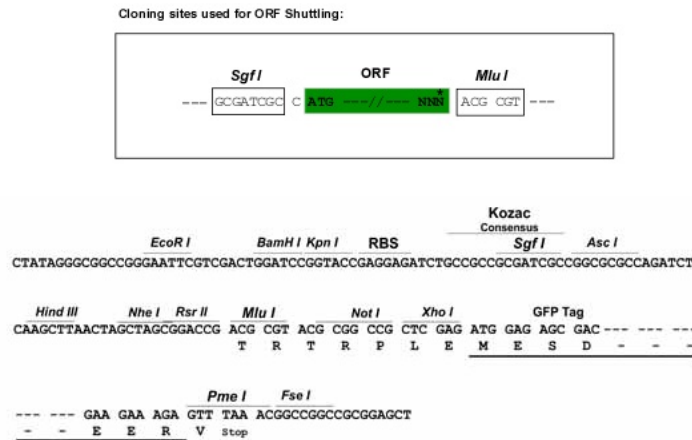
Protein Sequence: >MG214687 representing NM_175350
 Red=Cloning site Green=Tags(s)

```
MLVLMMLAAAVATMVRHTLCRVHTVRTGKVFKSNIQLQGDPLFYAFPNTFVLKNVCKADISVYLGQKQVFL
TIDNFESSLLPLTPVKSLAVGVPSITSAHFVSGSLVLFVISGKGYSDYYENTWRKLEGISEPVSHISGD
VCCFKGSFCLELSNNLFAYL RGGQIPGTNIYFSDNGGFSFQLMNTDKLSHLTGTLGGIFHLHMSQVGVL
MVENNLGTFHMEYPLNHSMGIAFSYKNLLEVIMKPYQRGMVLWNQKSLVSSNSGQIVEHVRLIDQKI
FTDLDEVEHANINIYSVASNAYELAFVAEDHLYYGSQSYMGTYYIKLPHQPLWSTHTSIYFEDIGILQVL
TPVADPHFAAYDFDKCTVNVQSSLMDEKLALQPCNVELLESTIMTMTFTIDMNSKLLSALMIPRKGEP
TPLVMVSNPHALGFKANLNEFGNTFDGNSKYKLDIELKQHHWGNSDFNFTASIKRHAISSVTVDIADKT
LSCVDLKLPLSTLISVGCMTKKIVVQNKISACTMGILNPVQLQKNYTYTIEKEAYDPINHNGEAQDDLIV
FYEYKDLGCPRLVYYDKPWKPVVELWKNIGIVEEIMNAEYVISEINGLVTYSYSLTAATANCRSQPQNWST
FESDIENEPEFLWNRENYVSCHEDNKNPPLLWPNVEYQVLGGQTNNKIIFGQRNGIYTFHLSVVDYPPYSY
CNLNTIFSVYVHGALPVTKFQPLL TILLMVT TLLTAWLAYAIPKQLRSEKQRLLGFCYQILQLCLGVC
FCTWLRGKLRQWLRPRRVKDNQNRGKVRVAQKHPET
```

TRTRPLE - GFP Tag - V

Restriction Sites: SgfI-MluI

Cloning Scheme:



ACCN: NM_175350

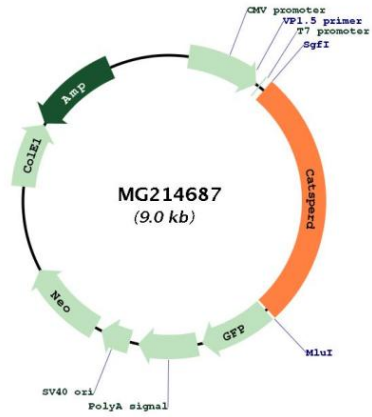
ORF Size: 2415 bp

OTI Disclaimer: The molecular sequence of this clone aligns with the gene accession number as a point of reference only. However, individual transcript sequences of the same gene can differ through naturally occurring variations (e.g. polymorphisms), each with its own valid existence. This clone is substantially in agreement with the reference, but a complete review of all prevailing variants is recommended prior to use. [More info](#)

OTI Annotation: This clone was engineered to express the complete ORF with an expression tag. Expression varies depending on the nature of the gene.

Components:	The ORF clone is ion-exchange column purified and shipped in a 2D barcoded Matrix tube containing 10ug of transfection-ready, dried plasmid DNA (reconstitute with 100 ul of water).
Reconstitution Method:	<ol style="list-style-type: none">1. Centrifuge at 5,000xg for 5min.2. Carefully open the tube and add 100ul of sterile water to dissolve the DNA.3. Close the tube and incubate for 10 minutes at room temperature.4. Briefly vortex the tube and then do a quick spin (less than 5000xg) to concentrate the liquid at the bottom.5. Store the suspended plasmid at -20°C. The DNA is stable for at least one year from date of shipping when stored at -20°C.
Note:	Plasmids are not sterile. For experiments where strict sterility is required, filtration with 0.22um filter is required.
RefSeq:	NM_175350.3 , NP_780559.2
RefSeq Size:	2565 bp
RefSeq ORF:	2418 bp
Locus ID:	106757
UniProt ID:	E9Q9F6
Cytogenetics:	17 D
Gene Summary:	Auxiliary component of the CatSper complex, a complex involved in sperm cell hyperactivation. Sperm cell hyperactivation is needed for sperm motility which is essential late in the preparation of sperm for fertilization. Required for CATSPER1 stability before intraflagellar transport and/or incorporation of the CatSper complex channel into the flagellar membrane. [UniProtKB/Swiss-Prot Function]

Product images:



Circular map for MG214687