

Product datasheet for **MG214665**

2210016L21Rik (NM_028211) Mouse Tagged ORF Clone

Product data:

Product Type: Expression Plasmids
Product Name: 2210016L21Rik (NM_028211) Mouse Tagged ORF Clone
Tag: TurboGFP
Symbol: 2210016L21Rik
Mammalian Cell Selection: Neomycin
Vector: pCMV6-AC-GFP (PS100010)
E. coli Selection: Ampicillin (100 ug/mL)
ORF Nucleotide Sequence: >MG214665 representing NM_028211
 Red=Cloning site Blue=ORF Green=Tags(s)

TTTTGTAATACGACTCACTATAGGGCGGCCGGGAATTCGTCGACTGGATCCGGTACCGAGGAGATCTGCC
 GCC**CGATCGCC**

ATGGTGGCGCCCAGCGGTGCAATGAGCGATTCCGGAGAACAGCAGCAGTAGCAGCAGCGATGCGGAGGAAT
 TGGCAGCTGTGCGGAGGCGGCTACGCCCGCTGGGGCTGGAGCAGCGCCCGGGGCGAGCGGAGAGACC
 CGAAGCCGGTGTGCAGATAAACAAGCACCCGACCCCGCAGCCAAGCCGCAGGCATGAGGTGAACAGCAC
 GAGGAAGATGGCAACGACCTTCGGACCACTCCTGAGTCCGAGCCACGTGGCCAAGAACTGGGAGCCC
 TGCTGGACAGCTCCATTGCCATCGCAGAAGTTTGAAGAAGTCGAAAAGGCAAGATGCAGCAGGTGCC
 AAAGGAGGAGGATGGCTTCCGCCTTTTCTCACATCCATCCCGGAGGCCATAAGAAGGAAGCCTCTCCA
 AGACCCTGCCGGAAGCGCCAGCCCCCAGCTCCAGTGAGGACAGCGATGAGGAACTGCAGCGGTGCCGGG
 AGGCAGCTGTGTCGGCTTCAGACATTCTCCAGGAGTCAGCCATACACTGCCCTGCCAAGGCAGAGGAGAA
 GAAGAAGTTGAAAAGAAAGCCAAGAAGAAGGTGGACAAATGCTGACCTGGCTGCAGCCCCAGGTCTGGAA
 CAGGTAAGGAGGCGGCTGTCAATGGGACCCGGTGTGCTGGGATCCAAAAGAAGAAAAGAAGA
 AGGCCAAGAAATCCAGAGAGGCTCCCCTGTGCCACCAGCAGAGTGTGCAGCGCGAAGCCTGAGAAC

ACGCGTACGCGGCCGCTCGAG - GFP Tag - GTTTAA

Protein Sequence: >MG214665 representing NM_028211
 Red=Cloning site Green=Tags(s)

MVAPSGAMSDSENSSSSSDAEELARCREAATPAWGLEQRPGAERPEAGAADKQAPTPQPSRRHEVNQH
 EEDGNDLRTTPEFRAHVAKKLGALLDSSIAIAEVWKKSQKAKMQVAKKEEDGFRLFFTSIPGGHKKEASP
 RPCRKRPSSSEDSDEELQRCREAAVSASDILQESAIHCPAKAEKKLKKKAKKKVDNADLAAAPGLE
 QVKEAGVYNGDPVSLGIQKKKKKAKKSREAPLCPAEECAAAKPEN

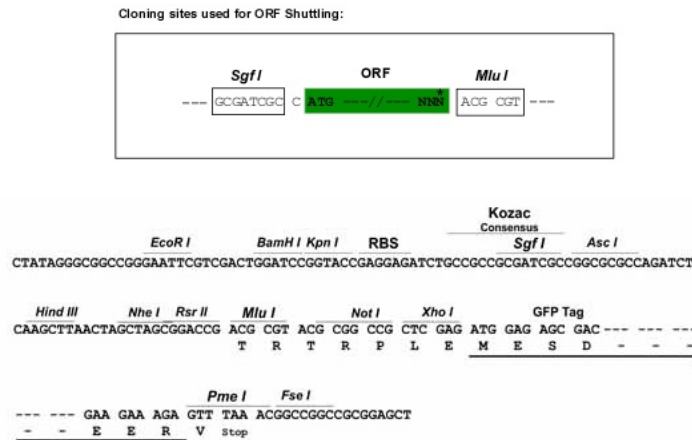
TRTRPLE - GFP Tag - V



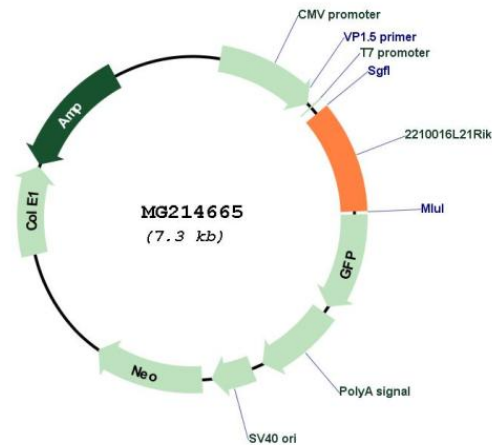
[View online »](#)

Restriction Sites: SgfI-MluI

Cloning Scheme:



Plasmid Map:



ACCN: NM_028211

ORF Size: 768 bp

OTI Disclaimer: The molecular sequence of this clone aligns with the gene accession number as a point of reference only. However, individual transcript sequences of the same gene can differ through naturally occurring variations (e.g. polymorphisms), each with its own valid existence. This clone is substantially in agreement with the reference, but a complete review of all prevailing variants is recommended prior to use. [More info](#)

OTI Annotation: This clone was engineered to express the complete ORF with an expression tag. Expression varies depending on the nature of the gene.

| | |
|-------------------------------|---|
| Components: | The ORF clone is ion-exchange column purified and shipped in a 2D barcoded Matrix tube containing 10ug of transfection-ready, dried plasmid DNA (reconstitute with 100 ul of water). |
| Reconstitution Method: | <ol style="list-style-type: none">1. Centrifuge at 5,000xg for 5min.2. Carefully open the tube and add 100ul of sterile water to dissolve the DNA.3. Close the tube and incubate for 10 minutes at room temperature.4. Briefly vortex the tube and then do a quick spin (less than 5000xg) to concentrate the liquid at the bottom.5. Store the suspended plasmid at -20°C. The DNA is stable for at least one year from date of shipping when stored at -20°C. |
| RefSeq: | <u>NM_028211.1</u> , <u>NP_082487.1</u> |
| RefSeq Size: | 1350 bp |
| RefSeq ORF: | 771 bp |
| Locus ID: | 72357 |
| UniProt ID: | <u>Q3UY34</u> |
| Cytogenetics: | 5 F |
| Gene Summary: | Plays a role in the regulation of Wnt signaling pathway during early development. [UniProtKB/Swiss-Prot Function] |