

Product datasheet for **MG214662**

Vmn2r27 (NM_001104642) Mouse Tagged ORF Clone

Product data:

Product Type:	Expression Plasmids
Tag:	TurboGFP
Symbol:	Vmn2r27
Synonyms:	EG232367
Mammalian Cell Selection:	Neomycin
Vector:	pCMV6-AC-GFP (PS100010)
E. coli Selection:	Ampicillin (100 ug/mL)



ORF Nucleotide Sequence: >MG214662 representing NM_001104642
Red=Cloning site Blue=ORF Green=Tags(s)

TTTTGTAATACGACTCACTATAGGGCGCCGGGAATTCGTGCGACTGGATCCGGTACCGAGGAGATCTGCC
GCCGCGATCGCC

ATGAAATTACTCATTGCCTTCTCTAGTATTGTTCTCATTTTCATCCAGGAAAAATGTCTTGTCTTCT
ACATAAGTGTACCTGATTCTCCTGGCTACAATCAAGATGGGGATTTTCTTATTGGAGGATCTTTCCCT
TAGAGTGACTGGTCGAGAAGACAGAAGTGAATTTGCTTAAATGAGACAATGAATATGACATATGGTAGT
TATTTCAATCTACCTAAACATTATCAGCACATATTGGCAATGGTTTTGCTGTAGAAAACAATCAACAAGG
ACCCAAATATTCTATTCAATATGTCCTTGGGATTTTATCTCTTTGATGTTGACTTTATTGTGATGAAGGC
CATGGAAAGTTGTATGGTGTGATCTCAGGAGAGAGACCACCAATTCCTAACTACAGCTGCAGGCCGAG
AAGACTAATAAGCCGGTTGCAGTGATAGGAGGCTATTCAAAAGCAATAACAGCTCAGATCTCCCAAGTTC
TAAGTCTCTACAATGTCCACAGATCAGCTATGCTCCTTTTGTATCAGAGTCTTGAAGCAGAGTCCAGCT
CCAGTCTCCTTACCAGTTTCTGTGCACACTGCAGCTCTGTATCAGGGAATTATTCAACTGATGCTATAC
TTCACTTGGGTCTGGGTTGGCCTGGTAGTTCAGATGATATGAGGGGAGAACTTACATTACAGAAGTCA
CAGAAGACATGACCAAGCAGGACTTTGTATTGCATTTGCAGTACGGAGTCCAATTTTCTTGTGCGAA
CACAGTAAATTTGATAATTTTAGAGGAAGAAGTGGAAAGTTAGACGTTGCTTGTATATGGTGACTCA
TATGATTTTTCTGGATTGTCCTTTACATCCCCTTCTTGCCTTTTAAAGGCAATGCTTGTATCACAAT
CTGATTGGTATACCACATTTCCCTTATTTCCATAATCAAGTTTATGAGTACTTTGGTGGAGTATTATTATT
TTCAGATCACATGGATGAAATCTGGGATTCAAGGAGTTTCTCAGAAATCTTCAACCTAGAAAAATCCT
CAGAATATCTTTTATTAGGATATGTGGTCCATCGTATTTGAGTGTCCACATTTGTATCTGCACAAAGTCA
GGGAAGTAAAGTCAATGTGAGCCAAATGGCAGCCTGAGCACAGCCTCTGCATGTTGGGATATGAATAC
CTCACCTATGAGCTACAAAGTCCATGCTGTGTATGCCATCGCCAGGCACTCCATGTGGAGCTGTCA
GTCAGAGTGGAAAGGAGATTCAATTTGATAAAGGTGACTCCGGGCTCCTCTCCCATGGAAGTCCATCCAT
TCTTACAAAATGGCCAGTTCGTGAGACTCTCCAATGAGGAGAACATTGTGAACAAGGAGGTTTCAGCAAC
CAAATTTGACATCTTTAATTACCAGTCTCTGCAGAGCGGACTGAAGGTGATGGAAGTTGGTGAATTT
GTCTTCGAACCTCACAGAGTTCAGCATTTTCCCTAAATGAAGAAGTATAAAGGTGGGGTGAATACCACA
ATATGTCTGCTTTACATGTTTGCAGTCAAACCTGTCCACTTGGATTTAGCAAAATACCTGATGATTGGAG
ACCACTCTGTTGTTACGATTGTGCCCATGTCCAGATGGAGAATTTGCAAAATGAAACAGATATGGATCAA
TGCATCAAGTGTCTGAAGATCAGTATCCAAATGAGCAGAGAAATCAGTGTCTTCTAAAATACAGCAT
TTTTGTCCCATGAAGATACTCTGGGAGCTGTTTTGGGCTCCATGGCCATTAGTTTTGCTGCTTTTTCAGC
TATGATTTTAGGATTTTATCCACTATCGGGACACCCATTGTGAGGCAAAATAACAGAAATCTCAGT
TATCTCCTCTAGTTTCTCAAAGCTCTGTTTCTTTTGTCTACTAATGTTTATTGGTGAACCTAGAAGAG
TCACTTGTCTCTTGAGACAAATGATTTTTGGGGTGTATTTTCTGTTGCCCTTCTGCAGTCTTGCCAAA
GACTTTTCAATGTGGTTGTGGCCTTCAAAGTCATCAAACCAGGAAGCACCTTACAAATGAGGATGGCGACC
CAAATCTCAAATGCTATAGTCTGCTGTGGTCCATCATTCAAGTGTGCATCTGTGCAGTCTGGCTGGGAA
CATATCCCCTTTCCCTGATGTTGACATGCACTCAGAGTTTGGTCAAATCATCTCTGGTATAACGAGGG
GTCCACCTTGCTTCTATTGTGTTCTAGGGTACTTGGGCTTCTTCCAGTCTCAGCTTGTATTATTGCT
TTTCTGGTGAGAAGTCTACCTGACAGCTTCAATGAGGCAAAAACAATCACTTTTCAAGCATGCTGGTTTTCT
GCAGTGTGGATTCTTTTGTATTACTTACCTTAGGTCAAAAGCCAAAACCATGGTGGCTGTGGAAAT
TGTTTTCAATCTTGCCTCCAGTGTGGCTTACTGAGCTTTATCTTCTTCCCAAATGCTATGTGATCCTC
CTGAGGTCAGGTGGCTATTCGAGAAAGAAGTCTTTAAGTCGGTTTCTCCG

ACGCGTACGCGGCCGCTCGAG - GFP Tag - GTTTAA

Protein Sequence:

>MG214662 representing NM_001104642

Red=Cloning site Green=Tags(s)

MKLLIAFSLVIVLISFQEKMSCFYISVPDSPGYNQDGDFLIGGFFSLRVTGREDRTEFCFNETMNMITYGS
YFNLPKHYQHILAMVFAVETINKDPNILFNMSLGFYLFVDVDFIVMKAMESCMVLISGERPPIPNYSCRPE
KTNKPVAVIGGYSKAITAQISQVLSLYNVPQISYAPFDQSLASRVQLQSPYQFPVHTAALYQGIIQLMLY
FTWVWVGLVVPDDMRGELYITELTEDMTKHGLCIAFAVRSPIFPCRNTVNLIIIEEELGSLDVVLVYGDS
YDFFWIVLYIPFLPFNGNVLITNSDWYTTFPYFHNQVVEYFGGVLLFSDHMDEILGFKFELRNLQPRKYP
QNIIFIQDMWSIVFECPLYLHKVRELSQCEPNGSLSTRPLHVDMNTSPMSYKVHAAVYIAIQALHVELS
VRVEGDSFDKGVLRAPLPWKLHPFLQNGQFVRLSNEENIVNKEGSATKLDIFNYQSLQSGTEGHVKVGEF
VFEPHRVQHLSLNEELIRWGEYHNMSALHVCSQTCPLGFSKIPDDWRPLCCYDCAPCPDGEFANETDMDQ
CIKCPEDQYPNEQRNQCCLKITAFLSHEDTLGAVLGSMAISFAAFSAMILGLFIHYRDTPIVRANRNL
YLLLVSLLKLCFFCSLMFIGEPRRVTCLLRQMIFGVVSVALSAVLAKTFIVVAVFKVIKPGSTLQMRMAT
QISNAIVCCGSIIQVCICAVWLGTYPFPDVMHSEFGQIILWYNEGSTLAFYCVLGYLGFLASLSLFLIA
FLVRSPLDSFNEAKTITFSMLVFCVWISFVFTYLRSAKTMVAIVEIVSILASSAGLLSFIFLPKCYVIL
LRSGGYSRKKFFKSVSP

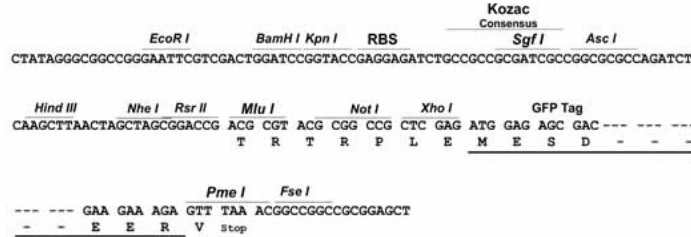
TRTRPLE - GFP Tag - V

Restriction Sites:

Sgfl-MluI

Cloning Scheme:

Cloning sites used for ORF Shutting:



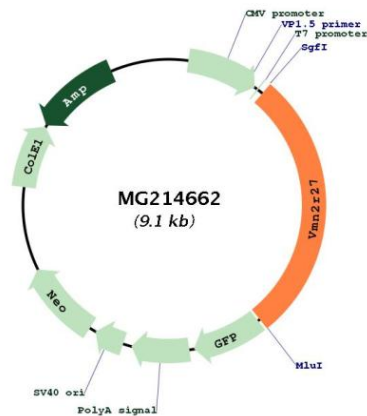
ACCN: NM_001104642

ORF Size: 2571 bp

OTI Disclaimer: The molecular sequence of this clone aligns with the gene accession number as a point of reference only. However, individual transcript sequences of the same gene can differ through naturally occurring variations (e.g. polymorphisms), each with its own valid existence. This clone is substantially in agreement with the reference, but a complete review of all prevailing variants is recommended prior to use. [More info](#)

OTI Annotation: This clone was engineered to express the complete ORF with an expression tag. Expression varies depending on the nature of the gene.

Components:	The ORF clone is ion-exchange column purified and shipped in a 2D barcoded Matrix tube containing 10ug of transfection-ready, dried plasmid DNA (reconstitute with 100 ul of water).
Reconstitution Method:	<ol style="list-style-type: none">1. Centrifuge at 5,000xg for 5min.2. Carefully open the tube and add 100ul of sterile water to dissolve the DNA.3. Close the tube and incubate for 10 minutes at room temperature.4. Briefly vortex the tube and then do a quick spin (less than 5000xg) to concentrate the liquid at the bottom.5. Store the suspended plasmid at -20°C. The DNA is stable for at least one year from date of shipping when stored at -20°C.
Note:	Plasmids are not sterile. For experiments where strict sterility is required, filtration with 0.22um filter is required.
RefSeq:	NM_001104642.1 , NP_001098112.1
RefSeq Size:	2574 bp
RefSeq ORF:	2574 bp
Locus ID:	232367
Cytogenetics:	6 F2

Product images:

Circular map for MG214662