

Product datasheet for **MG214654**

Olfr166 (NM_147068) Mouse Tagged ORF Clone

Product data:

Product Type:	Expression Plasmids
Product Name:	Olfr166 (NM_147068) Mouse Tagged ORF Clone
Tag:	TurboGFP
Symbol:	Olfr166
Synonyms:	MOR270-1
Mammalian Cell Selection:	Neomycin
Vector:	pCMV6-AC-GFP (PS100010)
E. coli Selection:	Ampicillin (100 ug/mL)
ORF Nucleotide Sequence:	>MG214654 representing NM_147068 Red=Cloning site Blue=ORF Green=Tags(s)

TTTTGTAATACGACTCACTATAGGGCGGCCGGAATTCGTCGACTGGATCCGGTACCGAGGAGATCTGCC
GCC**CGATCGCC**

ATGGAGAAATGGAATCAGAGCTCAAGTATTTACTCTGTTAGGACTGCTTCCACAAAACCAAACAGGCC
TGCTACTTTTGATGCTCATCATCTTTGTCTTCTCTGGCTTTGTGTGGCAACTCAGGAATGATCCACCT
CATTTCGTGTGGATCCAAGGCTCCACACCCCATGACTTTCTCCTCAGTCAGCTCTCTCATGGACCTG
ATGTACATTTCTACCACTGTTCCCAAGATGGCATTAACTTCCTTTCTGGCCAGAAAAGCATCTCTTTTC
TGGGCTGTGGAGTCAATCCTTCTTCTCCTGACTATGGCATGTTCTGAGGGCTTGTCTTGGCTTCCAT
GGCTTATGATCGTTTTGTGGCTATCTGCCATCCCCTTCACTATCCCATTGCGATGAGCAAAATAATGTGT
CTGAAGATGATCATAGGATCCTGGATATTGGGCTCAATCAACTCTTTAGCACATACCGTCTATGCCCTTC
ATATTCCTTACTGCCATTCTAGGTCCATTAACCATTTCTTCTGTGATGTTCCAGCCATGTTGCCCTGGC
CTGTATGGACACTTGGGTTTATGAGTACATGGTGTGTTGTGAGCACAAGCCTGTTTCTCCTACTGCCTTC
CTTGGTATCACAGCTTCCATGGTGGGTCCTTTTGTGCTTCCACATGCGCTCAAAGAGGGAAAGA
AGAAGGCCTTACCACATGCTCAACTCACTTAACTGTGGTGACATTTTACTATGCACCTTTTGTCTATAC
CTATCTTCGACCTAGGAGTCTTCGCTCCCAACAGAAGATAAGATTCTGGCTGTTTTCTACACTATCCTT
ACCCCATGCTCAACCCATCATTATAGTCTGAGGAATAAGGAGGTCTGGGGCCATGACAAGAGTCC
TTGGTACTTTTCTTCAACTAAACCG

ACGCGTACGCGGCCGCTCGAG - GFP Tag - GTTTAA



[View online »](#)

Protein Sequence: >MG214654 representing NM_147068
Red=Cloning site Green=Tags(s)

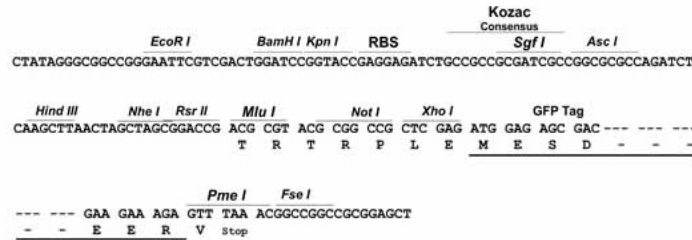
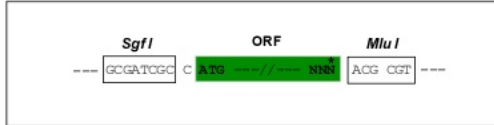
MEKWNQSSDFTLLGLLPQNQTGLLLLMLIIFVFSALCGNSGMIHLIRVDPRLHTPMYFLLSQLSLMDL
 MYISTTVPKMAFNFLSGQKSISFLGCGVQSFFFLTMACSEGLLLASMAYDRFVAICHPLHYPIRMSKIMC
 LKMIIGSWILGSINSLAHTVYALHIPYCHSR SINHFFCDVPAMPLPLACMDTWVYEMVVFVSTSLFLLLPF
 LGITASYGRVLFVAFHMRSEKGGKKAFTTCSHTLTVVTFYAPFVYTYLRPRSLRSPTEDKILAVFYTIL
 TPMLNPIIYSLRNKEVLGAMTRVLGTFPSTKP

TRTRPLE - GFP Tag - V

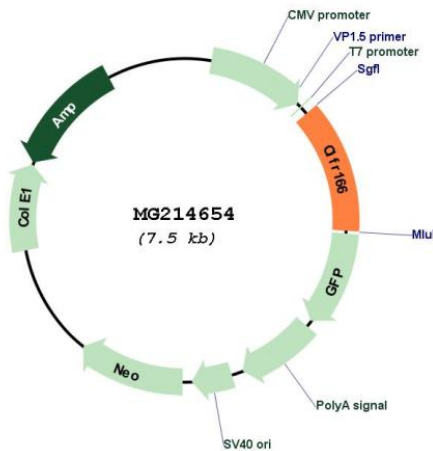
Restriction Sites: SgfI-MluI

Cloning Scheme:

Cloning sites used for ORF Shuttling:



Plasmid Map:



ACCN: NM_147068

ORF Size: 936 bp

OTI Disclaimer:	The molecular sequence of this clone aligns with the gene accession number as a point of reference only. However, individual transcript sequences of the same gene can differ through naturally occurring variations (e.g. polymorphisms), each with its own valid existence. This clone is substantially in agreement with the reference, but a complete review of all prevailing variants is recommended prior to use. More info
OTI Annotation:	This clone was engineered to express the complete ORF with an expression tag. Expression varies depending on the nature of the gene.
Components:	The ORF clone is ion-exchange column purified and shipped in a 2D barcoded Matrix tube containing 10ug of transfection-ready, dried plasmid DNA (reconstitute with 100 ul of water).
Reconstitution Method:	<ol style="list-style-type: none">1. Centrifuge at 5,000xg for 5min.2. Carefully open the tube and add 100ul of sterile water to dissolve the DNA.3. Close the tube and incubate for 10 minutes at room temperature.4. Briefly vortex the tube and then do a quick spin (less than 5000xg) to concentrate the liquid at the bottom.5. Store the suspended plasmid at -20°C. The DNA is stable for at least one year from date of shipping when stored at -20°C.
RefSeq:	NM_147068.1 , NP_667279.1
RefSeq Size:	939 bp
RefSeq ORF:	939 bp
Locus ID:	259071
Cytogenetics:	16 A3
Gene Summary:	Olfactory receptors interact with odorant molecules in the nose, to initiate a neuronal response that triggers the perception of a smell. The olfactory receptor proteins are members of a large family of G-protein-coupled receptors (GPCR) arising from single coding-exon genes. Olfactory receptors share a 7-transmembrane domain structure with many neurotransmitter and hormone receptors and are responsible for the recognition and G protein-mediated transduction of odorant signals. The olfactory receptor gene family is the largest in the genome. The nomenclature assigned to the olfactory receptor genes and proteins for this organism is independent of other organisms. [provided by RefSeq, Jul 2008]