

Product datasheet for **MG214640**

Vmn2r41 (NM_001105073) Mouse Tagged ORF Clone

Product data:

Product Type:	Expression Plasmids
Tag:	TurboGFP
Symbol:	Vmn2r41
Mammalian Cell Selection:	Neomycin
Vector:	pCMV6-AC-GFP (PS100010)
E. coli Selection:	Ampicillin (100 ug/mL)



[View online »](#)

ORF Nucleotide Sequence: >MG214640 representing NM_001105073
Red=Cloning site Blue=ORF Green=Tags(s)

TTTTGTAATACGACTCACTATAGGGCGCCGGGAATTCGTGCGACTGGATCCGGTACCGAGGAGATCTGCC
GCCGCGATCGCC

ATGTTCAATTTTCATGAGAGTCTTCCTCCTCTTAATATTACACTTCTCATGGCCAATTCATTGGTCCCA
GGTGCTTTTGGAGAATAAATTTGGATGAAATAATGGATGAATATTTGGGATTAAGTTGTGCTTTCATCCT
GGCAGCAGTTCAGACACCCACTGAAAAAGATTATTTCAACAAGACTCTTAATTTCTAAAAACAACCTACA
AACCACAAATAGCTTTGGCATTGGTGTTCGAATGGATGAAATCAACAGAAATCCTGATCTTTTACCAA
ATATGTCTTTGATTATAAGATACGCTTTGGGCCATTGTGATGGAAAACTGTAAACACCTACACCATTTT
ATTTTCATAAAAAGAAAAAGCCCTATCCCTAATTATTTCTGTAATGAAGAGAGTATGTGCTCCTTTCTG
ATTTACAGGACCCAATTGGAAGGTATCTTTAAGTTTCTGGGATTACCTGGACAGCTTCTTATCTCCACGTA
TCCTTCAGCTTACCTATGGACCTTTCAGTTCCTCCTCAGTGATGATGAACAATATCCCTATCTCTATCA
GATGGCCCCAAGGACACATCTCTAGCATTGGCAATGGTCTCCTTCATACATTCTTCAACTGGAATTGG
ATTGGCCTTGTATCCCAAGATGATGATCAAGGAAACCAATTTCTTTTAGAGTTGAAGAAACAGAGTGAAA
ACAAGGAAATTTGCTTTGCCTTTGTGAAAATGATCTCTGTTGATGATGTTTCATTTCCACAAAACTGA
AATGTACTACAACCAAAATTGTGATGTCATCCACAAATGTTATTATCATTATGGAGAAACATACAATTTT
ATTTGTTGATCTTCAGAATGTGGGAACCTCCCATTTTACAGAGAATATGGATCACCACAAAAAATTTCA
ATTTCCCTACCAGGAAAAAGACATAAGTCATGGCACATTCTATGGATCACTTACTTTTCTACCCCA
TGGTGAGATTTCTGGCTTTAAAAATTTTGTACAGACATGGTTCCATCTCAGAAACACAGATTTATATCTA
CTAATGCAAGAGTGAAATATTTTAACTATGTAAGCTCAGCATCCAATTGTAATACTGAAGAACAATT
CATCTGATGCCTCATTTAATTGGCTAATGGAACAGAAGTTTGACATGACCTTTAGTGAGAATAGTCATAA
CATATACAATGCTGTGCATGCCATAGCCCATGCCCTCCATGAGATGAATCTGCAACATGCTGATAATCAG
GCAATAGACAATGGAAAAGGAGCCAGTTCTCACTGCTTGAAGGTAACCTCTTTCTAAGAAGGGCCTACT
TCACTAATCCTCTTGGGGACAAAGTGTATTAAGCAAGAGTAATAATGCAGGATGAATATGACATTAT
TCACTTTGGGAATCTCTCACAACACCTTGAGATTAAGATGAAGTTAGGAAAGTTCAGCCCATATTTACCA
CATGGTCGACACTCTCACTTATATGTAGACATGATTGAGTTGGCCACAGGAAGAAGAAGATGCCATCCT
CTGTGTGACAGTGCAGGAAATGTAGTCCTGGATTGAGAAGATTATGGAAGGAGGGAATGGCAGCCTGCTGTT
TGTTTGCAGCCCTGCCAGAAAAATGAAATTTCTAATGAGACAAAATGGATCAATGCATGAATTGTCCA
GAATACCAATATGCCAACACTGAACAGAACAAAATGATTCAGAAAGGTGCACCTTTCTAAGCTATGAAA
ACCCCTTGGGAATGGCACTTGCTTAAATGGCCTTCTGTTTCTGCACTCACAGCTCTGGTACTTTGTGT
CTTTGTGAAGCACCATGACACTCCTATTGTGAAGGCCAATAACAGAAGCCTCAGCTACCTATTACTCATG
TCACTCATGTTCTGTTTCTGTGCTCCTTTTCTTCTTATTGGCCTTCCAACAGAGCCATTTGTGCTTAC
AGCAGATCACATTTGGAATTGATTCACCTGTGGCTGTTCCACAGTCTGGCCAAAACAGTCATTGTGGT
TCTGGCTTTCAAAGTCACAGACCCAGGAAGAAGATTGAGAACTTCTGGTATCAGGGACACCCAACTAC
ATTATTCCTATATGTTCCCTACTCCAATGTGTTTTGTGTGCTATCTGGCTAGCAGTTTCTCCTCCCTTTG
TTGATATTGATGAACACACTCTCCATGGCCACATCATCATTGTGTGCAACAAGGGCTCAGATACTGCATT
CTACTGTATCCTGGGATATTTGGCTGCATGGCACTTGAAGCTTCTCTGCTTTTCTGGCCAAGAAT
CTGCCTGACACATTCAATGAAGCCAAGTCTTGACCTTCAGCATGCTAGTGTCTGCAAGTGTCTGGGTCA
CCTTCTCCCTGTCTACCATAGCACCAGGGCAACACATGTTGTGCTGGAGATCTTCTCCATCTTGGC
ATCCAGTGCAGGGATCCTTGGGTGTATTTGTACCCAAGATTTATATCATTTTAAATGCGACCAGAGAGA
AATTCTACCAAAAAGATCAGGAAAAATCATATTTT

ACGCGTACGCGGCCGCTCGAG - GFP Tag - GTTTAA

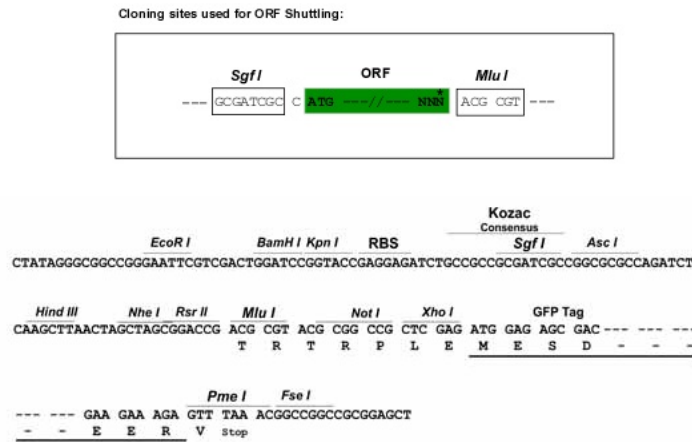
Protein Sequence: >MG214640 representing NM_001105073
 Red=Cloning site Green=Tags(s)

MFIFMRVLLLLNITLLMANFIGPRCFWRINLDEIMDEYLGLSCAFILAAVQTPTEKDYFNKTLNFKLTKTT
 NHKYALALVFAMDEINRNPDLNPNMSLIIRYALGHCDGKTVTPPYLFHKRKKSPIPNYFCNEESMCSFL
 ISGPNWKVLSFDWYDLSFLSPRILQLTYGPFSSIFSDDEQYPYLQMAPKDTSLALAMVSFIHYFNWNN
 IGLVIPDDQGNQFLLELKKQSENKEICFAVKMISVDDVSFPQNTEMYNNQIVMSSTNVIIYGETYNF
 IDLIFRMWEPPILQRIWIITTKQLNFPTRKKDISHGTFYGSFLTFLPHHGEISGFKNFVQTFWHLRNTDLYL
 LMQEWFYFNYSASNKILKNSSDASFNLMEQKFDMTFSENSHNIYNNAVHAIHAHALHEMNLQHADNQ
 AIDNGKGASSHCLKVNSFLRRAYFTNPLGDKVFMKQVRVIMQDEYDIHFHGNLSQHLEIKMKLGKFSPLYL
 HGRHSHLYVDMIELATGRRKMPSSVCSAECSPGFRRLWKEGMAACCFVCSPCPENEISNETNMDQCMNCP
 EYQYANTEQNKCIQKGVTFLSYENPLGMALALMAFCFAFTALVLCVFKHHDTPIVKANNRSLSYLLLM
 SLMFCFLCSFFFIGLPNRAICVLQKITFGIVFTVAVSTVLAKTVIVVLAFAKVTDPGRRRLRNFLVSGTPNY
 IIPICSLQLCVLCAIWLAVSPPFVDIDEHTLHGHIIVCNKGSDFAYCILGYLACMALGGSFLAFLAKN
 LPDTFNEAKFLTFSMVFCVWVTFPLVYHSTKKGHMVAEIFSILASSAGILGCIFVPKIYIILMRPER
 NSTQKIREKSYF

TRTRPLE - GFP Tag - V

Restriction Sites: SgfI-MluI

Cloning Scheme:



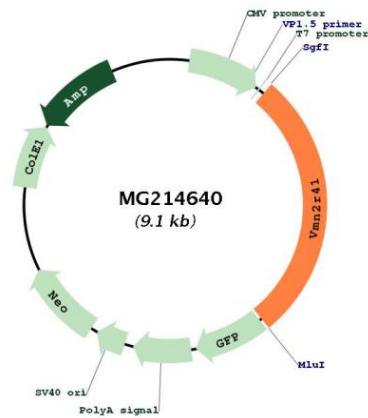
ACCN: NM_001105073

ORF Size: 2556 bp

OTI Disclaimer: The molecular sequence of this clone aligns with the gene accession number as a point of reference only. However, individual transcript sequences of the same gene can differ through naturally occurring variations (e.g. polymorphisms), each with its own valid existence. This clone is substantially in agreement with the reference, but a complete review of all prevailing variants is recommended prior to use. [More info](#)

OTI Annotation: This clone was engineered to express the complete ORF with an expression tag. Expression varies depending on the nature of the gene.

Components:	The ORF clone is ion-exchange column purified and shipped in a 2D barcoded Matrix tube containing 10ug of transfection-ready, dried plasmid DNA (reconstitute with 100 ul of water).
Reconstitution Method:	<ol style="list-style-type: none">1. Centrifuge at 5,000xg for 5min.2. Carefully open the tube and add 100ul of sterile water to dissolve the DNA.3. Close the tube and incubate for 10 minutes at room temperature.4. Briefly vortex the tube and then do a quick spin (less than 5000xg) to concentrate the liquid at the bottom.5. Store the suspended plasmid at -20°C. The DNA is stable for at least one year from date of shipping when stored at -20°C.
Note:	Plasmids are not sterile. For experiments where strict sterility is required, filtration with 0.22um filter is required.
RefSeq:	NM_001105073.1 , NP_001098543.1
RefSeq Size:	2559 bp
RefSeq ORF:	2559 bp
Locus ID:	100042848
Cytogenetics:	7 A1

Product images:

Circular map for MG214640