

Product datasheet for **MG214623**

E330014E10Rik (NM_001122668) Mouse Tagged ORF Clone

Product data:

Product Type:	Expression Plasmids
Tag:	TurboGFP
Symbol:	E330014E10Rik
Mammalian Cell Selection:	Neomycin
Vector:	pCMV6-AC-GFP (PS100010)
E. coli Selection:	Ampicillin (100 ug/mL)

ORF Nucleotide Sequence: >MG214623 representing NM_001122668
Red=Cloning site Blue=ORF Green=Tags(s)

TTTTGTAATACGACTCACTATAGGGCGCCGGGAATTCGTCGACTGGATCCGGTACCGAGGAGATCTGCC
GCC**CGATCGCC**

ATGAGTGGTCAGACCCACCCACACTCCAGAAGCTAGCAAGGCAGACACTGCTGAGAGATGAGGCTTTGG
CCATATCCTCTCTGGAGGAGCTGCCAGCTGTGGTCTTCCCACCACCTGTTCCAAGAGGCCTTTGCTGGCAG
ACTCAACAAGCTCATAAAGGCAATGGTGGCAGCCTGGCCTTCCACGATCTCCCTGTGGGGCCATTGATA
AATATGCATAACCTGGAACCTTGAAGCTCTGCTAGATGGAGTAGACATGAGACTAACAAGAAAATTTTC
ACCCCTGGAGGCCAAAACCTCAGGTTCTCGACATGAGAAACGTGGACCATGTCTTCTGGAACATATGGAG
CGATGCAAAATGACAGTACTCTGATGCAGAGACCTGGATGAAAAGCAAGTAGTGAAGGCCCTCGCAGA
TATGCACTGAGGCAGCGTCTGAAGATCATAGTTGATCTGTCAATCAGTTCTCAGCTCAATGAACAAAAAG
CATATTTCTTGAATTGGCCAAAGCAGAGAAAAGGGTCCATAAATTTCTGCTGTACAAAGATGAAGATCTG
GGATGCACCAGACGAAGTTATCAGAGAAATCATGAATGTTTTCCATCCAGAGCACATTACAGAATTAGAA
CTGTATACCGACTGGACTCTGTTGCGGCTGGCACATTTGCTCCCTACATTGGGCAGATGAAAACTTG
AAAGAGTCTTCTGGCACCACCTCCACAAGAATACCTCCCTATTATGAATTTGACAAGGGACTCAAAAGT
CAAGTGTATTAATAAATTTCTCAGTTTTCCAAATTCACCTGTCTCCAACATGTCTTATGAAACGT
GTCCATTTTCTCAGAGACCACCTGCATCAGATACTAGGGTGCCTGAGGACGCCCTTGCGACCCCTCCA
TCACTCACTGCCTAATCTCACAGACAGACTTGGATTCCTTTCTGCTGTCACAACCTTTTAAAGTTAAA
AAATCTGGAATCAGAGGAGTGACATTATTTGCTCTCGATCTTATGCCTCTGAGAGGTCCTCCTAGGAAAA
CTGGCAGGTAATCTTGGATCTCTGGATTTTCAGTGGTGTAGCATGAAGGACTCCAGCTCATTGTCTCT
TACCTGCCCTCAGTCAATGCTCTCAGCTCAACCAGATCAACTTCTACAGCAATGACTTCTCCATGGCCAT
CCTGAAGGACCTTTGCGACACACAGCCAACTGGAGCAAGATGAATGTGGAACAATACCCTGTCCCTCTG
GAGTGTATGATGATTGGGTATGTCTCCAGAGAAAGATTTGTGGAACCTTTGTCAGGAGCTCATGGATA
CCCTCAGGGCCAAAAGAGAGCCTAAGAGCATATCTTTTGCAACAAATGTCTGCCAAAATTTGTGGCAAGAC
CTGTGTCTATGGCCAGGGGCAAGACTTTGTTCTGTTTGCAG

AC**CGCT**ACGCGGCCGCTCGAG - GFP Tag - GTTTAA



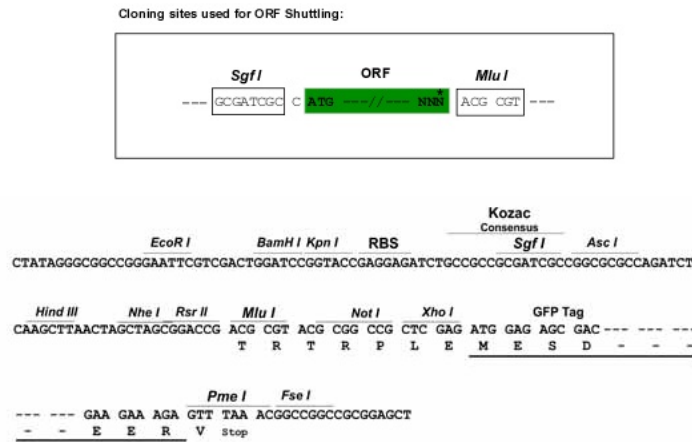
Protein Sequence: >MG214623 representing NM_001122668
 Red=Cloning site Green=Tags(s)

MSGQTPPTLQKLARQTLRDEALAISSLEELPAVVFPPLFQEAFAGRLNKLKAMVAAPFFHDLVPVGLI
 NMHNLETLQALLDGVDMRLTRKFHPWRPKLQVLDMRNVDFVFNWISDANDSDSDAETLDEKQVVKAPRR
 YALRQRLKIIVDLSSQLNEQKAYFLNWAQQRKGSINFCCTKMKIWDAPDEVIREIMNVFHPEHITEL
 LYTDWTLRLLAHFAPYIGQMKNLERVFLAPLHKNTSPIMNLTRDSKVCKIKKIIISQFSKFNCLQHVFMKR
 VHFLRDHLHQILGCLRTPLQTLSTHCLISQTDLDSFSCCHNLFKLKNLEIRGVTLFALDLMPLRGLLGK
 LAGTLESDFQWCSMKDSQLIVLLPALSQCSQLNQINFYSNDFSMAILKDLLQHTANWSKMNVEQYVPVL
 ECYDALGHVSRERFVELCQELMDTLRAKREPKISFATNVCQNCGKTCVYGQGARLCSCLQ

TRTRPLE - GFP Tag - V

Restriction Sites: SgfI-MluI

Cloning Scheme:



ACCN: NM_001122668

ORF Size: 1443 bp

OTI Disclaimer: The molecular sequence of this clone aligns with the gene accession number as a point of reference only. However, individual transcript sequences of the same gene can differ through naturally occurring variations (e.g. polymorphisms), each with its own valid existence. This clone is substantially in agreement with the reference, but a complete review of all prevailing variants is recommended prior to use. [More info](#)

OTI Annotation: This clone was engineered to express the complete ORF with an expression tag. Expression varies depending on the nature of the gene.

Components: The ORF clone is ion-exchange column purified and shipped in a 2D barcoded Matrix tube containing 10ug of transfection-ready, dried plasmid DNA (reconstitute with 100 ul of water).

Reconstitution Method:

1. Centrifuge at 5,000xg for 5min.
2. Carefully open the tube and add 100ul of sterile water to dissolve the DNA.
3. Close the tube and incubate for 10 minutes at room temperature.
4. Briefly vortex the tube and then do a quick spin (less than 5000xg) to concentrate the liquid at the bottom.
5. Store the suspended plasmid at -20°C. The DNA is stable for at least one year from date of shipping when stored at -20°C.

Note: Plasmids are not sterile. For experiments where strict sterility is required, filtration with 0.22um filter is required.

RefSeq: [NM_001122668.1](#), [NP_001116140.1](#)

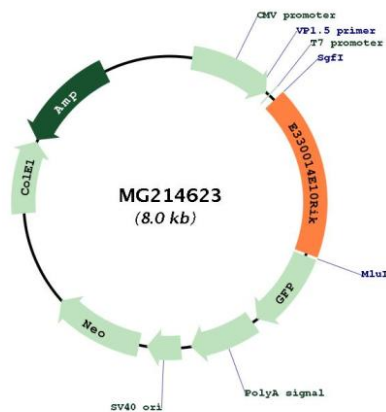
RefSeq Size: 2118 bp

RefSeq ORF: 1446 bp

Locus ID: 665943

Cytogenetics: 5 E3

Product images:



Circular map for MG214623