

Product datasheet for **MG214610**

C2cd2 (NM_174847) Mouse Tagged ORF Clone

Product data:

Product Type:	Expression Plasmids
Product Name:	C2cd2 (NM_174847) Mouse Tagged ORF Clone
Tag:	TurboGFP
Symbol:	C2cd2
Synonyms:	5730563M15; 5830404H04Rik; AI314146; AI449533; BF168443; mKIAA4045; ORF25
Mammalian Cell Selection:	Neomycin
Vector:	pCMV6-AC-GFP (PS100010)
E. coli Selection:	Ampicillin (100 ug/mL)



[View online »](#)

ORF Nucleotide
Sequence:

>MG214610 representing NM_174847
Red=Cloning site Blue=ORF Green=Tags(s)

TTTTGTAATACGACTCACTATAGGGCGGCCGGGAATTCGTCGACTGGATCCGGTACCGAGGAGATCTGCC
GCCGCGATCGCC

ATGGGCTCGTGGCTCAGCGAGGTGCAGTGGCTCTTCTGGTGTGCTCTTCGTCGCGGCCCTGGGCACCG
TGGCCTGTACTTGGCGCAGTGGGCGCTGGCCAAGGCGCGACCCCGCCCGGCGGGCGGAGCCGGA
TGAGCTAAGGCGCCGGGAGTCGGACACACTCCTTTCTGGATACTGACACGGGATAGCTGGGGAACCG
TGGCAGCGGCTTGGGTGACCGCCTGAACTATGAGGCCGAAAAGAGAGGGGTCCACTGCGTCTCTCT
TCCAGAAGGACCCACGGCCACAATCCTTGACGCTGACAGTTGAGAAGGTATCCAGTGTAGTCAAGTCAAC
CCAGGAGAAGGTGGTGTCTGTCTGTGGTGGGTGAGACCCTTCAGTTCTTGGTCACTGACGGCCCTGCC
TCTGCCACAGGCTCGGAGTGCCAGCTGTATGATGCCATCTTTCCCATTTCAATTAAGGTAGAATTCC
ACATGGAAGAGAAGAGAGAGGACATACAAATCAGGTGGTCTTTCACCCACGTCCCAGAAACGCCATCAA
GATCCAGCCCCAGGCCAGGGGAGAAGAAGGCGCTCGGGGTAACATGCTTTCTGAAGCCCTTGAGGAT
CTTTTCAAGCACCTAGTTAATGCTGCCTCTCCATCTGTTTTCTGAGCACCAAACCCACGAGGTCAAAG
AAGCTCAGAGTCTACAGTGCCCTTCTCCACTGCTCAGGAACCCCTGCCCTCCCAAACCTCCAAGGGCTCA
TGAATAAAATTCAGGTGAAGAATATCAGAGTTTCCCTGATAAACCCACCTGGTCTTCAGGCCTTAGC
CATGTGTGCGTGGCTCAGCTGAACGATCCTGAACAGAGATTATCAGCACCCTAGTGAGAAACACTACTG
ACCTCAGTTGGGAGGAGAAATTCACCTTGAACGAACGCCAAATCCAAGGAGCTGGTCTGCAGATCTC
ACAGGATGGGTGCTCCTCAGAAGGTCTGTTGGGATAGCAACCATTACCTGGACCTATTTAGGAAGCAG
CCTAATGGCCACAGACCTTCAGACTGATCAGTGGGACAGAGCCTGACAGCTTGGTGTGGGCTCAGTCA
CTGCAGAGTTTTCTTACGTAGAACCTGGGAGCTGAAATCTTGGCCAGCTCCTCCCCTGTTTCTGCTGC
AAAGATAGAAAAGGACCGTACGGTGATGCCATGTGGGACTGTGGTCAACCTGCTACTGCTGTGAAGACC
AAACCTCGGTTTGACACTGGGAGGGCAACCCACTGAACTCAGAGTCCCCTGTGAGGACACCCGTCACAG
TGAAGTCATTGAGAAGGACATCTCTGTCCAGGCCATTTCTTGCCACAGCGCCCCGTCAGCAAGACATT
CTCCTTTCAGACACGGAACCTGTTGGTGTGAATGGCTCAGACCCTGTGGCTGAAGTCGCCATTCGGCAA
CTCAGCGAGTCTCAAAGCTGAACTCAAGTCCCACGGAAGAAAAGCACCATCATAATTCAGGGATCT
CCAAGACCTCACTATCTCAGGACCACAATGCTGCCCTCATGCTGGACTACGAGCTTCTATGGACAGCAC
CAACCAGGAGATGCCACGTCTGCTTTGTGCCATCCAGAGGCCACTGAAGCCTCTGCCACTACCCACCT
GAAGAAAATGAGCCAGCCAGACCCTACCTGCCCTCAAGCCTAGAGAAAATGATCTAGATTCTGGGAAC
TGGAGAAGGAGTCTCCAGTAGCATCATGGAGCGGACCAGCCTTGCAAGGAGCCTGACGGTGTGAAGTATC
CGAGAGCTCCCTGAGTACTTCAGAGCTAGGAGCTATGAAGAAGCATAAAGGAGGACTCCTAAGGAAAGGT
GCCAAGCTCTTCTCCGCGGCGACACCAACAGAAAGACCCGGGCTTGAGCCAGTCACATAATGACCTGG
TATTCCTGAGCAGCCAGAGGGGAGGCAGAAGAAGGGGGCAGCCCTCGGCCGGCTCTGAACAGAAAAGCT
GCTTACCAGGCACAGAGGCAAACACACTATGAATGGAGTACCCAGAGAGCCCTGCATA

ACGCGTACGCGGCCGCTCGAG - GFP Tag - GTTTAA

Protein Sequence: >MG214610 representing NM_174847
 Red=Cloning site Green=Tags(s)

MGSWLSEVQWFLVLSLFVAALGTVGLYLAQWALAKARPPRRRAEPDELRRRESDTLLSWILTRDSWGNQ
 WQAAWVTALNVEAEKRGGLRLSFQKDRPQSLQLTVEKVSSVVKSTQEKVVICHVVGETLQFLVSAGPA
 SATGSECQLYDVHLSPFHLKVEFHMEEKREDIQRWSFTHVPETAIKIQPQAPGEKKALGVNMLSEALED
 LFKHLVNAASPSVFLSTKPTQVKEAQLQCPSSSTAQEPCCPPKPPRAHELKLVKNIRVSLINHPGASGLS
 HVCVAQLNDPEQRFISTLVRNTTDLSEWEEFTFELNAKSKELVLQISQDGCSEGLLGIATIHLDLFRKQ
 PNGPQTFRLISGTEPDSLVLGSVTAEFSYVEPGEKLSWAPPVSAKIEKDRTVMPCGTVVTTVTAVKT
 KPRFDTGRATPLNSESPVTRPVTVKVIKDISVQAISCHSAPVSKTFSSSDTELLVLNGSDPVAEVAIRQ
 LSESSKLLKSPRKKSTIIISGISKTSLSQDHNAALMLDYAASMDSTNQG DATSALCHPEATEASATTPP
 EENEP AQTLPALKPRENDLDSWELEKESPVASWSGPALQEPDGDDELSESSLSTSELGAMKKHKGGLLRKG
 AKLFFRRRHQQKDPGLSQSHNDLVFLQQPEGRQKKGATLGRLLNRKLLTRHRGKHTMNGVPREPCI

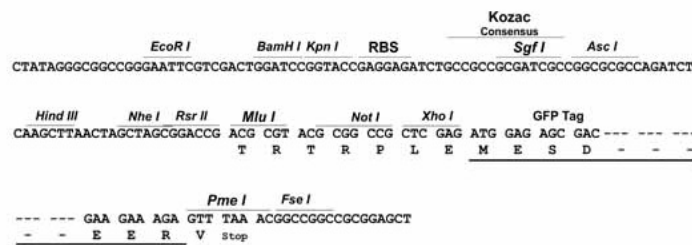
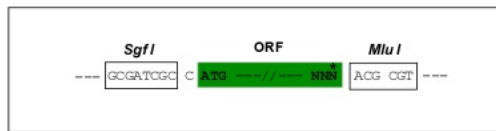
TRTRPLE - GFP Tag - V

Restriction Sites:

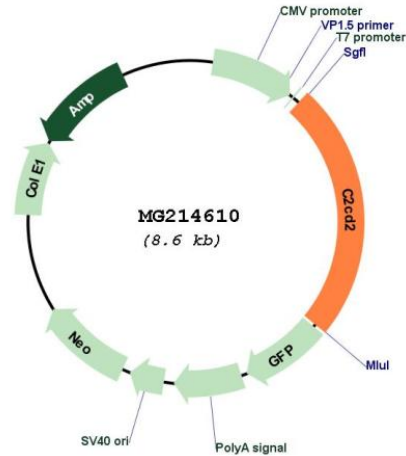
Sgfl-Mlul

Cloning Scheme:

Cloning sites used for ORF Shuttling:



Plasmid Map:



ACCN: NM_174847

ORF Size: 2088 bp

OTI Disclaimer: The molecular sequence of this clone aligns with the gene accession number as a point of reference only. However, individual transcript sequences of the same gene can differ through naturally occurring variations (e.g. polymorphisms), each with its own valid existence. This clone is substantially in agreement with the reference, but a complete review of all prevailing variants is recommended prior to use. [More info](#)

OTI Annotation: This clone was engineered to express the complete ORF with an expression tag. Expression varies depending on the nature of the gene.

Components: The ORF clone is ion-exchange column purified and shipped in a 2D barcoded Matrix tube containing 10ug of transfection-ready, dried plasmid DNA (reconstitute with 100 ul of water).

Reconstitution Method:

1. Centrifuge at 5,000xg for 5min.
2. Carefully open the tube and add 100ul of sterile water to dissolve the DNA.
3. Close the tube and incubate for 10 minutes at room temperature.
4. Briefly vortex the tube and then do a quick spin (less than 5000xg) to concentrate the liquid at the bottom.
5. Store the suspended plasmid at -20°C. The DNA is stable for at least one year from date of shipping when stored at -20°C.

RefSeq: [NM_174847.1](#)

RefSeq Size: 6568 bp

RefSeq ORF: 2091 bp
Locus ID: 207781
UniProt ID: E9Q3C1
Cytogenetics: 16 C4