

Product datasheet for **MG214606**

Vmn2r35 (NM_001105067) Mouse Tagged ORF Clone

Product data:

Product Type:	Expression Plasmids
Tag:	TurboGFP
Symbol:	Vmn2r35
Synonyms:	EG625353
Mammalian Cell Selection:	Neomycin
Vector:	pCMV6-AC-GFP (PS100010)
E. coli Selection:	Ampicillin (100 ug/mL)



ORF Nucleotide Sequence: >MG214606 representing NM_001105067
Red=Cloning site Blue=ORF Green=Tags(s)

TTTTGTAATACGACTCACTATAGGGCGCCGGGAATTCGTGACTGGATCCGGTACCGAGGAGATCTGCC
GCCGCGATCGCC

ATGTTCACTTTGATGGGGTCTTCTTCTCCTTAATATCCACTTTTCATGGCCAATTTTATTGATCCCA
GGTGCTTTTGGAGAATAAATTTGAATGAAATTCAGGATGAATATTTGGGATTAACCTGTTATTTTCATCCT
GGCAGCAGTTCAGAAACCTATTGAGAAAGAATATTTCAACAAAACCTCTGAATTTCTAAAAACAACATAAA
AACCACAAATAGCTTTGGCATTGGTCTTTTCAATGGATGAAATCAACAGGAATCCTGATCTTTTACCAA
ATATGTCTTTGATCATAAGATACACTTTGGGCCGTTGTGATGGGAAAACGTAAATACCTACACCAATTT
ATTTTCATAAAAAACAAAAAGTCCCTATCCCTAATTTATTCTGTAATGAAGAGACTATGTGTTCTTTCTG
CTTACAGGAACCCATTGGGAGGTATCTTTAAGTTTCTGGAAGTACCTGGACAGCTTTTTATCTCCACGTA
TCCTTCAGCTTACCTATGGACCTTTCCATTCTATCTTCAGTGATGATGAACAATATCCCTATCTCTATCA
GATGGCCCCAAGGACACATCTCTAGCATTGGCAATCGTCTCCTTCATACATTCTTCAACTGGAATTGG
ATTGGCCTTGTCAATCCAGATGATGATCAAGGAAACCAATTTTTTTTAGAGTTGAAAAAACAGTGTGAAA
ACAAGGAAATTTGCTTTGCCTTTGTGAAAATGATCTCTGTTGATGACATTTTATTAGAGAAAAAACTGA
AATGTACTACAAACAAATTTGTGATGTCATCCTCAAATGTTATCATCATTATGAGGAAACAAATCAATTT
ATTGATTTGATCTTCAGAATGTGGGAACCTCCAGTTTACAGAGAATATGGATCACCACAAAACAAATGGA
ATTTCCCTACCAGTAAGAGAGACATAACGCATGACACATTCTATGGATCACTTACTTTTCTACCCACCA
TGGTGGGATTTCTGGCTTTAAAAATTTTGTGCAGACTTGGTTCCATCTCAGAAGCAAAGATTTATATCTA
GTAATGCCAGAGTGGAAACTTTAAATATGAATCCTCAGCATCTAAGTGTAAAATACTGAAGAGCAAAT
CATCCAATGCCTCATTTGATTGGCTAATGGAACAGAAGTTTGACATGGCCTTTAGTGAGAGTAGTCATAA
CATATACAATGCTGTATGCCGTAGCCCATGCACTCCATGAGATGAATTTGCAGCAGGTTGATAACCAG
GCAATAGACAATGGGAAAGGAGCCAGTTCTCACTGCTTGAAGGTAACCTCTTCTAAGAAAAGTCCACT
TTACTAATCCTCTTGGGGACAAAGTGATTGAAACAAAGAGTAATAATGCAGGAAGAATATGACATTTT
TCATTTTGAAGATCTCTCACAGCACCTTGGGATTAAGGTGAAGTTAGGAAAGTTCAGCCAATATGTTTCA
CATGGTCGAAAACCTTCACTTATATGTAGACATGCTTGAGGTGGCCACAGGAAGTAAAAAGATGCCATCCT
CTGTGTGACAGTGCAGAATGTAGTCTGGATTGAGAAGATGTGGAAGGAGGGAATGGCAGCCTGCTGTT
TGTTTGCAGCCCTGCCCTGAAAATGAAAATTTCTAATGAGACAAAATGATGATCATTGTGTAATTGTCCA
GAATACCAATATGCCAGCACAGAACAGAACAAATGATTCAAAAAGTTGTCACCTTTCTAAGCTATGAAG
ACCCCTTGGGGATGGCACTTGCTTAAATTCCTTCTGTTTCTGCACTTACAGCTGTGGTACTTTGTGT
CTTTGTGAAGCACCATGACACTCCTATTGTGAAGGCCAATAACAGAATCCTCAGCTACATATTATTGCTA
TCACTCATGCTCTGTTTCTGTGTTCTTTTCTTCTTATTGGCCATCCTAACAGAGCCACCTGTGCTTAC
AACAAATCACATTTGGAATGTATTCACTGTGGCTCTTCCACAGTCTGGCTAAAAACAGTCACTGTGGT
TCTCGCCTTCAAAATCACAGACCCAGGGAGAAGATTGAGACACTTCTTGTATCAGGGACACCAACTAC
ATTATTTCCATATGTTCCCTACTCCAATGTGTTCTGTGTGCAATCTGGTAGCAGTTTCTCCTCCCTTTG
TTGATATTGATGAACACTCTCAGAATGGCCATATCATCATTGTGTGCAACAAGGGCTCAGTACTGCATT
CTACTGTCTTCTTGATACTTGGCTGCCCTGGCACTTGAAGTTTCACTGTGGCTTTCTTGCCAAGAAT
CTGCCTGACACATTCAATGAAGCCAAGTCTTGACCTTCAGCATGTTAGTGTTCTCAGTGTCTGGGTCA
CCTTCTCCCTGTCTACCATAGCACCAGGGCAAGGTGATGTTGCTGTGGAGATCTTCTCCATCTTGGC
ATCCATTGCAGGGATGCTTGGATGATTTTTGCACCAAGATTTATATCATTTTAAATGAGTCCAGAGAGA
AATTCTACCAAAAAGATCAAAGAGAATAATTCTACCAAAAAGATCAAAGAAAAATCATATTTT

ACGCGTACGCGGCCGCTCGAG - GFP Tag - GTTTAA

Protein Sequence:

>MG214606 representing NM_001105067

Red=Cloning site Green=Tags(s)

MFTLMGVFFFLNIPLFMANFIDPRCFWRINLNEIQDEYLGSLCYFILA AVQKPIEKEYFNKTLNFKLTKK
NHKYALALVFSMDEINRNPDLLPNMSLIIIRYTLGRCDGKTVIPTPYLFHKKTKSPIPNYFCNEETMCSFL
LTGTHWEVSLSFWKYLD SFLSPRILQLTYGPFHSIFSDDEQYPYLQMAPKDTSLALAI VSF IHYFNWNW
IGLVIPDDDDQGNQFFLELKKQCENKEICFAFVKMISVDDISLEEKTEMYKQIVMSSSNV I IYEETINF
IDLIFRMWEPPVLQRIWITTKQWNFPTSKRDITHDTFYGSLTFLPHHGGISGFKNFVQTWFHLRSKDLYL
VMPEWKYFKYESSASKCKILKSKSSNASFDWLEQKFDMAFSESSHNIYNAVYAVAHALHEMNLQQVDNQ
AIDNGKGASSHCLKVNSFLRKIHFTNPLGDKVIMKQRVIMQEEYDIFHFENLSQHLGIKVKLGKFSQYVS
HGRNFHLYVDMLEVATGSKKMPSSVCSAECSPGFRMWEKMAACCSVCSPCENEISNETNMDHCVNCP
EYQYASTEQNKCIQKVTFLSYEDPLGMALALIAFCFAFTAVVLCVFKHHDTPIVKANNRILSYILLL
SLMSCFLCSFFFIGHPNRATCVLQQITFGIVFTVALSTVLAKTVTVVLAFAKITDPGRRLRHFLVSGTPNY
IIPICSLQLCVLCAIWLAVSPPFVDIDEHSQNGHIIIVCNKGSVTA FYCLLGYLAACLALGSFTVAFLAKN
LPDTFNEAKFLTF SMLVFFSVVWTF L PVYHSTKGKVMVAEIFSILASIAGMLGCIFAPKIYIILMSPER
NSTQKIKENNSTQKIKEKSYF

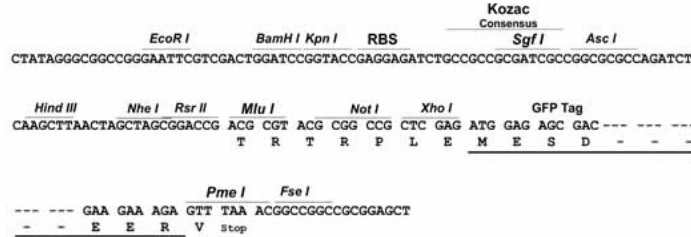
TRTRPLE - GFP Tag - V

Restriction Sites:

Sgfl-MluI

Cloning Scheme:

Cloning sites used for ORF Shutting:



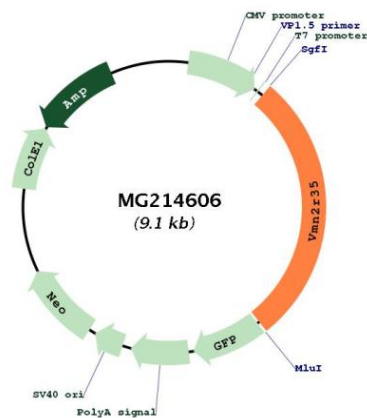
ACCN: NM_001105067

ORF Size: 2583 bp

OTI Disclaimer: The molecular sequence of this clone aligns with the gene accession number as a point of reference only. However, individual transcript sequences of the same gene can differ through naturally occurring variations (e.g. polymorphisms), each with its own valid existence. This clone is substantially in agreement with the reference, but a complete review of all prevailing variants is recommended prior to use. [More info](#)

OTI Annotation: This clone was engineered to express the complete ORF with an expression tag. Expression varies depending on the nature of the gene.

Components:	The ORF clone is ion-exchange column purified and shipped in a 2D barcoded Matrix tube containing 10ug of transfection-ready, dried plasmid DNA (reconstitute with 100 ul of water).
Reconstitution Method:	<ol style="list-style-type: none">1. Centrifuge at 5,000xg for 5min.2. Carefully open the tube and add 100ul of sterile water to dissolve the DNA.3. Close the tube and incubate for 10 minutes at room temperature.4. Briefly vortex the tube and then do a quick spin (less than 5000xg) to concentrate the liquid at the bottom.5. Store the suspended plasmid at -20°C. The DNA is stable for at least one year from date of shipping when stored at -20°C.
Note:	Plasmids are not sterile. For experiments where strict sterility is required, filtration with 0.22um filter is required.
RefSeq:	<u>NM_001105067.1</u> , <u>NP_001098537.1</u>
RefSeq Size:	2586 bp
RefSeq ORF:	2586 bp
Locus ID:	625353
Cytogenetics:	7 A1
Product images:	



Circular map for MG214606