

Product datasheet for **MG214550**

Ssty2 (NM_023546) Mouse Tagged ORF Clone

Product data:

Product Type: Expression Plasmids
Tag: TurboGFP
Symbol: Ssty2
Synonyms: 1700029H17Rik; pc11
Mammalian Cell Selection: Neomycin
Vector: pCMV6-AC-GFP (PS100010)
E. coli Selection: Ampicillin (100 ug/mL)

ORF Nucleotide Sequence: >MG214550 representing NM_023546
 Red=Cloning site Blue=ORF Green=Tags(s)

TTTTGTAATACGACTACTATAGGGCGCCGGGAATTCGTCGACTGGATCCGGTACCGAGGAGATCTGCC
 GCCGCGATCGCC

ATGACATCACTCAAGAAGAAGAGTAGGAGGAAGCCTTCTCCAGGCCCTGGGGAATATTGTTGGCTGCA
 GAATTTCTCACGGGTGGAAGGAAGTAATGAGCCTGTACCCATTGGAAGGCCATCATTCTAGGTCAACT
 GCCAACAAACCTTCTCTTTATTTGGTGAAGTATGACGGAATTGACAGTGTCTACGGACAGGAGCTCCAC
 AGCGATGAGAGGATTTAAATCTTAAGGTCTTGCCTCACAAAGTAGTTTTCTCAGGTGAGGGATGTCC
 ACCTCGCAGGCGCACTGGTTGGCAGAGAGGTACAACACAAATTTGAGGGGAAAGATGGCTCTGAGGACAA
 CTGGAGTGGGATGGTGCTAGCCAGGTGCCATTCTTACAGGACTATTTGTACATTTCTACAAGAAGGAT
 CCGGTCTCTACGTCTATCAGCTCCTGGATGACTACAAGGAAGTAACCTCCACATCATTCCAGAGACCC
 CTCTGGCTGGGGCAGATCAGGTGATGACAATGACTTCTTAATAGGTTCTGGGTGCAGTACACCAGAGA
 TGATGGATCCAAAAGTTCGGAAAGGTTGTTACAAAGTTCTAGCCAATCCTACTGTGTACTTTATCAA
 TTTCTCGGTGACCTCCATATCTATGTCTATACTCTAGTGTCAAATATCACT

ACGCGTACGCGCCGCTCGAG - GFP Tag - GTTTAA

Protein Sequence: >MG214550 representing NM_023546
 Red=Cloning site Green=Tags(s)

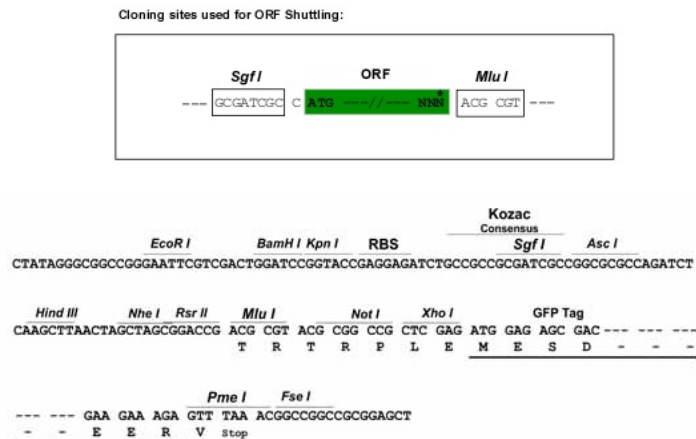
MTSLKKSRRKPSQALGNIVGCRISHGWKEGNEPVTHWKAIILGQLPTNPSLYLVKYDGDIDSVYQELH
 SDERILNLKVLPHKVVFPQVRDVHLAALVGREVQHKFEGKDGSEDNWSGMVLAQVPFLQDYLYISYKDK
 PVLVYVQLDDYKEGNLHIIPETPLAGARSGDDNFLIGSWVQYTRDDGSKKFKGVVYKVLANPTVYFIK
 FLGDLHIYVYTLVSNIT

TRTRPLE - GFP Tag - V



Restriction Sites: SgfI-MluI

Cloning Scheme:



ACCN: NM_023546

ORF Size: 681 bp

OTI Disclaimer: The molecular sequence of this clone aligns with the gene accession number as a point of reference only. However, individual transcript sequences of the same gene can differ through naturally occurring variations (e.g. polymorphisms), each with its own valid existence. This clone is substantially in agreement with the reference, but a complete review of all prevailing variants is recommended prior to use. [More info](#)

OTI Annotation: This clone was engineered to express the complete ORF with an expression tag. Expression varies depending on the nature of the gene.

Components: The ORF clone is ion-exchange column purified and shipped in a 2D barcoded Matrix tube containing 10ug of transfection-ready, dried plasmid DNA (reconstitute with 100 ul of water).

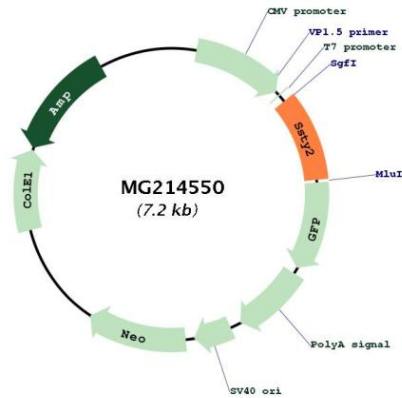
Reconstitution Method:

1. Centrifuge at 5,000xg for 5min.
2. Carefully open the tube and add 100ul of sterile water to dissolve the DNA.
3. Close the tube and incubate for 10 minutes at room temperature.
4. Briefly vortex the tube and then do a quick spin (less than 5000xg) to concentrate the liquid at the bottom.
5. Store the suspended plasmid at -20°C. The DNA is stable for at least one year from date of shipping when stored at -20°C.

Note: Plasmids are not sterile. For experiments where strict sterility is required, filtration with 0.22um filter is required.

RefSeq: [NM_023546.3](#), [NP_076035.3](#)

RefSeq Size: 1216 bp
RefSeq ORF: 684 bp
Locus ID: 70009
Cytogenetics: Y C3

Product images:

Circular map for MG214550