

Product datasheet for **MG214541**

4930432K21Rik (NM_001163752) Mouse Tagged ORF Clone

Product data:

Product Type:	Expression Plasmids
Product Name:	4930432K21Rik (NM_001163752) Mouse Tagged ORF Clone
Tag:	TurboGFP
Symbol:	4930432K21Rik
Mammalian Cell Selection:	Neomycin
Vector:	pCMV6-AC-GFP (PS100010)
E. coli Selection:	Ampicillin (100 ug/mL)



[View online »](#)

ORF Nucleotide Sequence:

>MG214541 representing NM_001163752
 Red=Cloning site Blue=ORF Green=Tags(s)

TTTTGTAATACGACTCACTATAGGGCGGCCGGAATTCGTGACTGGATCCGGTACCGAGGAGATCTGCC
 GCC**CGGATCGCC**

ATGAATAAGAAGAAACAGCGGAAGCTCAGGGGTCGGCTCCATCCCTCAAAGCCTTCTAAGAACCCACGGC
 TGAGAGACTCCCAGAGCTCCATGATGGTCCATTACACTACTCCAGAGAGTCGGAAGACAGCTCAGAACC
 TGCTCCTTCTGTAGAGCTAGGCGGGGAGGAACCTACACGAAGCTTTCAGCTGCCAGTGGAGGACACA
 GGAGCTGCCTCTGACCTCGCAGGATCACCCAAAGAGCTGGTCCCCTGCCTCCTCCAGGAAACAAGGC
 CAGAGCTGGGAGCCCTCAAAGCAGCCAGCCAGCCACAGAGAGAGTCCCTGAGGTTCCCTCCCATGACAT
 CAGACCAGAAGTCCAGACACAGCCAGATGGAACCTTTCAAAGGAGAGGACAATCTCACTAGATAATAGA
 AGCCTGGGAAACAATGGTTTGGATGGCCACAGTTCAAGACAGTAGTAGCCCCCTGTGAGTGTGCTG
 CTGAAGGCAGGGAGGCAGACAGCAGAGACCCACAGGAAAGAGATGCCAAGGAGGGGAAGCAGGGGCCA
 GCATTCTGGGAAACCCAGGAAGGAGAGGACATCCTCTACACATCAGCATTAGCTCCTGCCTCAGAGCCC
 ACCTGGTCTGTGGCTCAAGACCTCTGTCCCCACATATACTCTCAGCAGCACAGCTGCAGCACCCAGCT
 CCACCAGCCCAGCAGATGCCTCTTATGGACTGTGATTACAGAAGTGAAGTGTAGATCCCTCTGTGCT
 GCAACAGAGTGTCCACAGGTGGCCAAGCTGTGGGCTCTCTGGATGAGCAGATCCCTGATGGAGGCTGC
 ATTGGAAGTGTGCTGAGCTCCACACCTCTTGTGAGGAGACCACAGCAGGAGAGAGGAGGCCAGATGGG
 AAGAGAGGTGTGATGGTGTACCTGGCAAGCTTCACTGAGACAGAGCCTGAGAAACAAGAGCCCGTGAC
 GGAAGCTGGAGATTCCGGCCATATAGCCCAAGAAATGGATCCAGTGGTCAAGACCAAGGACTCTGGCTCT
 GATGAGCAGTCCGAGGAGATATAGGAATGTGCCTTTACCAGCACAGTCCATGAATCAGATGTTGGTAG
 AGTTACGTGGCCTAAGTGTGATCAAGACTTAGAGGGCCCTCAGTACCCCTCATACCTCCTCAGCTGTA
 GCACACTTGTGCAGCTAGTGACCCTCCCCAGAGCACCAAGGACTGTCACAGCAGCCCAGGCATTCCTGTA
 CACCTGGCAGCTCCCTGTCCCAGAGACCAGGCTGCATGGCAGGAGTCTCAGCAATGGAAGTACTTCC
 TGCTGACAGCCAGATACAGGATGCCCTGGATGCCACTAACATGGAGCAGGGTTTTCTTCCAGGGAGTAT
 GCCAGACCTTGGCTGGCCTGTCCCTAGCTCACAGTCCATCGGAGGATCCCCAAAGGCAGTACCAAACCT
 CAATCCAGATCCCATGTGAAACCTGGGCCAGGAGACCTACAGGATGCAGGATGCAACAGACACAGTGC
 GAGGCCTCGTGGTGGAGCTCTCCGGTCTGAACCGGCTGATTATGAGTACCCACCGGACCTGGAGGCCTT
 CAAGCGCAGGAAGACCAAGTCTCTGCCTTACTGACAAAGGGTTGGGGAGCCTTCTAGAGGGGATCAG
 AGCTGGAGGGACTTG

ACGCGTACGCGGCCGCTCGAG - GFP Tag - GTTTAA

Protein Sequence:

>MG214541 representing NM_001163752
 Red=Cloning site Green=Tags(s)

MNKKKQRNSGVGLHPSKPSKNPRLRDSQSSMMVHSHYSRESEDSSEPAPSVELGGEEPLHEAFSCPVEDT
 GAASDLGSPKELVPLPPSQETRPELGALKAASQPQRESLRFPPHDIRPEVQTQPDGTL SKERTISLDNR
 SLGNNGFEMATVQDSSSPLSDAAAEADSRDPQERDAQGGEAGA QHSGEPQEGEDILYTSALAPASEP
 TWSVAQDL SVPTYTL SSTAAPSSTSPADASLMDTVITEVSLDPSVLQQSAPQVAKLLGSLDEQIPDGGC
 IGTLLSSTPLAEETTAGREEARWEERCHGDTLASFTETEPEKQEPVTEAGDSGHIAQEMDPVVKTKDSGS
 DEQSPGDIGMLPLPAQSMNQMLVELRGLTCDQDLEGLSTPHTSSQLEHTCAASDPPQSTKDCHSSPGIPV
 HLAAPCPRDQAAWQESSAMELDFLPDSQIQDALDATNMEQGFPSGMPDLGWPVPSSQSIGGSPKAVTKP
 QSRSHVETWAQETYRMQDATDTVRGLVVELSGLNRLIMSTHRDLEAFKRRKTKSLPYLTKGLGSLPRGDQ
 SWRDL

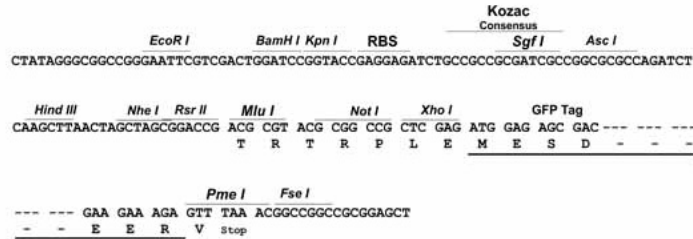
TRTRPLE - GFP Tag - V

Restriction Sites:

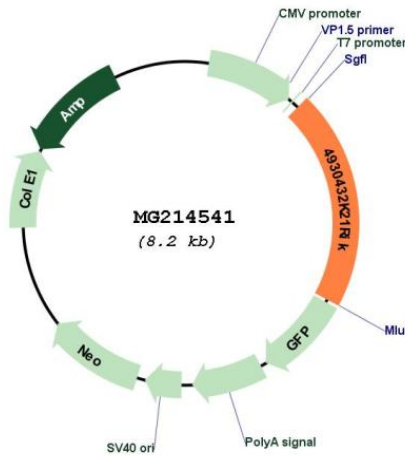
Sgfl-MluI

Cloning Scheme:

Cloning sites used for ORF Shutting:



Plasmid Map:



ACCN:

NM_001163752

ORF Size:	1695 bp
OTI Disclaimer:	The molecular sequence of this clone aligns with the gene accession number as a point of reference only. However, individual transcript sequences of the same gene can differ through naturally occurring variations (e.g. polymorphisms), each with its own valid existence. This clone is substantially in agreement with the reference, but a complete review of all prevailing variants is recommended prior to use. More info
OTI Annotation:	This clone was engineered to express the complete ORF with an expression tag. Expression varies depending on the nature of the gene.
Components:	The ORF clone is ion-exchange column purified and shipped in a 2D barcoded Matrix tube containing 10ug of transfection-ready, dried plasmid DNA (reconstitute with 100 ul of water).
Reconstitution Method:	<ol style="list-style-type: none">1. Centrifuge at 5,000xg for 5min.2. Carefully open the tube and add 100ul of sterile water to dissolve the DNA.3. Close the tube and incubate for 10 minutes at room temperature.4. Briefly vortex the tube and then do a quick spin (less than 5000xg) to concentrate the liquid at the bottom.5. Store the suspended plasmid at -20°C. The DNA is stable for at least one year from date of shipping when stored at -20°C.
RefSeq:	NM_001163752.1 , NP_001157224.1
RefSeq Size:	2389 bp
RefSeq ORF:	1698 bp
Locus ID:	74666
UniProt ID:	Q6DIA7
Cytogenetics:	8 C2
Gene Summary:	Meiotic recombination factor component of recombination bridges involved in meiotic double-strand break repair (PubMed:32463460, PubMed:32460033). Modulates the localization of recombinases DMC1:RAD51 to meiotic double-strand break (DSB) sites through the interaction with and stabilization of the BRCA2:HSF2BP complex during meiotic recombination (PubMed:32460033, PubMed:32463460). Indispensable for the DSB repair, homologous synapsis, and crossover formation that are needed for progression past metaphase I, is essential for spermatogenesis and male fertility (PubMed:32463460, PubMed:32460033).[UniProtKB/Swiss-Prot Function]