

Product datasheet for **MG214538**

Gm20867 (NM_001160142) Mouse Tagged ORF Clone

Product data:

Product Type: Expression Plasmids
Tag: TurboGFP
Symbol: Gm20867
Synonyms: MGC107099
Mammalian Cell Selection: Neomycin
Vector: pCMV6-AC-GFP (PS100010)
E. coli Selection: Ampicillin (100 ug/mL)

ORF Nucleotide Sequence: >MG214538 representing NM_001160142
Red=Cloning site Blue=ORF Green=Tags(s)

TTTTGTAATACGACTCACTATAGGGCGCCGGGAATTCGTCGACTGGATCCGGTACCGAGGAGATCTGCC
GCCGCGATCGCC

ATGACATCACTCAAGAAGAAGAGTAGGAGGAAGCCTTCTCCAGGCCCTGGGGAATATTGTTGGCTGCA
GAATTTCTCACGGGTGGAAGGAAGTAATGAGCCTGTCAACCCATTGGAAGGCCATCATTCTAGGTCAACT
GCCAACAAACCTTCTCTTTATTTGGTGAAGTATGACGGAATTGACAGTGTCTACGGACAGGAGCTCCAC
AGCGATGAGAGGATTTAAATCTTAAGGTCTTGCCTCACAAAGTAGTTTTCTCAGGTGAGGGATGTCC
ACCTCGCCAGCGCCCTGGTTTGCAGAGAGGTACAACACAAATTTGAGGGGAAAGATGGCTCTGAGGACAA
CTGGAGTGGGATGGTGCTAGCCAGGTGCCATTCTTACAGGACTATTTTACATTTCTACAAGAAGGAT
CCGGTCTCTACGTCTATCAGCTCCTGGATGACTACAAGGAAGGTAACCACCACATCATTCCAGAGACCC
CTCTGGCTGAGGCGAGATCAGGTGATGACAATGACTTCTTAATAGGTTCTGGGTGCAGTACACCAGAGA
TGATGGATCCTAAAAGTTCCGAAAGGTTGTTTACAAGTTCTAGCCAATTCTACTGTGTACTTTATCAA
TTTCTTGGTACCTCCATATCTATGTCTATACTCTGGTGTCAAATATCACT

ACGCGTACGCGCCGCTCGAG - GFP Tag - GTTTAA

Protein Sequence: >MG214538 representing NM_001160142
Red=Cloning site Green=Tags(s)

MTSLKKSRRKPSQALGNIVGCRISHGWKEGNEPVTHWKAIILGQLPTNPSLYLVKYDGDIDSVYQELH
SDERILNKLKVLPHKVVFLQVRDVHLASALVCREVQHKFEGKDGSEDNWSGMVLAQVPFLQDYFYISYKGD
PVLVYVQLDDYKEGNHHIIPETPLAEARSGDDNDFLIGSWVQYTRDDGSKKFGKVYKVLANSTVYFIK
FLGDLHIYVYTLVSNIT

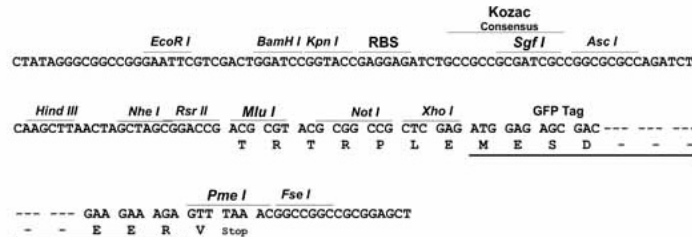
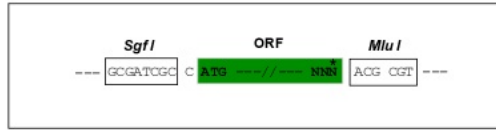
TRTRPLE - GFP Tag - V



Restriction Sites: SgfI-MluI

Cloning Scheme:

Cloning sites used for ORF Shutting:



ACCN: NM_001160142

ORF Size: 681 bp

OTI Disclaimer: The molecular sequence of this clone aligns with the gene accession number as a point of reference only. However, individual transcript sequences of the same gene can differ through naturally occurring variations (e.g. polymorphisms), each with its own valid existence. This clone is substantially in agreement with the reference, but a complete review of all prevailing variants is recommended prior to use. [More info](#)

OTI Annotation: This clone was engineered to express the complete ORF with an expression tag. Expression varies depending on the nature of the gene.

Components: The ORF clone is ion-exchange column purified and shipped in a 2D barcoded Matrix tube containing 10ug of transfection-ready, dried plasmid DNA (reconstitute with 100 ul of water).

Reconstitution Method:

1. Centrifuge at 5,000xg for 5min.
2. Carefully open the tube and add 100ul of sterile water to dissolve the DNA.
3. Close the tube and incubate for 10 minutes at room temperature.
4. Briefly vortex the tube and then do a quick spin (less than 5000xg) to concentrate the liquid at the bottom.
5. Store the suspended plasmid at -20°C. The DNA is stable for at least one year from date of shipping when stored at -20°C.

Note: Plasmids are not sterile. For experiments where strict sterility is required, filtration with 0.22um filter is required.

RefSeq: [NM_001160142.1](#), [NP_001153614.1](#)

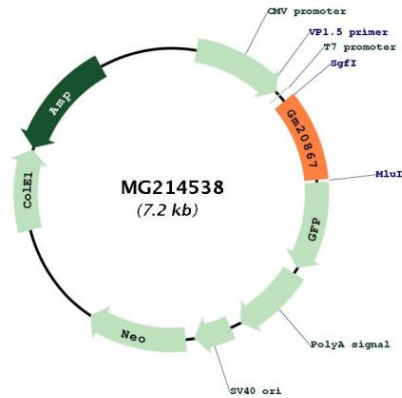
RefSeq Size: 1248 bp

RefSeq ORF: 684 bp

Locus ID: 100041256

Cytogenetics: Y D

Product images:



Circular map for MG214538