

Product datasheet for **MG214534**

Pcdhb6 (NM_053131) Mouse Tagged ORF Clone

Product data:

Product Type:	Expression Plasmids
Product Name:	Pcdhb6 (NM_053131) Mouse Tagged ORF Clone
Tag:	TurboGFP
Symbol:	Pcdhb6
Synonyms:	Pcdhb5B; PcdhbF
Mammalian Cell Selection:	Neomycin
Vector:	pCMV6-AC-GFP (PS100010)
E. coli Selection:	Ampicillin (100 ug/mL)



[View online »](#)

ORF Nucleotide
Sequence:

>MG214534 representing NM_053131
Red=Cloning site Blue=ORF Green=Tags(s)

TTTTGTAATACGACTCACTATAGGGCGGCCGGGAATTCGTCGACTGGATCCGGTACCGAGGAGATCTGCC
GCC**CGCATCGCC**

ATGGAGACAACGCTAGCAAAAACGCCAGAGAAAAGGCAAGTGGTTTTTCTTGCTATATTGTGCTTTTGT
GGGAGGCTGGTTCTGAGGCAATTAGATATTCCATTCCAGAAGAAAACAGAGAGTGGCTACTTGGTGGCTCA
CTTGCCAAAAGATCTGGGTTTCAGGGTAGGGAACTGGCCACTAGAAGGGCTCGAATCCATCACAGAGGA
AACAAAGAGCTCTTGCACTAGATGTGGAGACAGGGAATTTGCTCCTGAAAGAAAAACCAGATCGCGAAG
CACTATGTGGGGCAGACAACCTGTGTGCTGCACTTCCAGATCATACTAGAAAACCTGTGCACTTCTT
TCAAACCTGAACCTGCACTCACAGATATAAACGACCACTCTCCGGAGTTCCTGACACAGAAATGCTCCTA
AAAATTCAAGAAAGCACACAGCCAGCAACTGTGTTTCTCTGAAGGCAGCTCAGGACTCTGACATTGGAA
GCAACGCTGTTCCAGAACTACACAGTCAGTCCCAACCTCCATTTCCATGTGGTTACTCTCAGTCGCTCAGA
TGGCAGGAAATACCCAGAGCTGGTGTGGACAGAGCCCTGGACAGGGAGGAGCAGCTGAACTCACTTTA
ATCCTCACTGCTCTGGATGGGGAGCTCCGCCAAGTCTGGGACTACCACTGTTCCGAATTGAAGTCGTGG
ACATCAATGATAATGCCCCGAATTTGTACAGTCACTCTATTCGGTGGAGGTCCTGAGAACAGCCCTT
CGATGCCTTAGTTGTCACAGTCTCTGCCAGAGATTTAGATGCTGGGATACATGGCAATGTAGCCTACTCT
CTGTTTCAAGGTGGGGAGGTCCTCAGCCATTTGTAATAGATGAAATCACAGGAGAAATTCGTCTTAAAG
GGGCACTGGATTTTGAAGCAACTCATACTATACCATGGAATTTAGCCACAGACAGTGGTGGTCTTTT
AGGAAAATGCACTGTAGCTATCCAGGTGTTGGATGTGAACGACAATGCCCTAAACTCACCATCTCTTCC
CTCACTAGTTCATCCCAGAAAATGCTCCTGAGGCTGTAGTTGCTGTTTTCACTGCTCTGACCCAGATT
CGGGGGATAATGGAAGGATGGTGTGTTCTATTCAAAACGAACCTCCATTTCTTTGAAGCCTACATTGGA
AAATTACTACACTTTAGCGGCAGAAAGGGCCACTGGACAGAGAGATCAGAGAAGAGTACAACATCACCATC
ATAGTCTCCGATTTGGGCACACCCAGGCTCACAAACCCAGCACACCATAACAGTGCAGGTGGTGGACATCA
ATGACAATGCCCTGCCTTACCCAAACCTCCTACACCATGTTTGTCCATGAGAACAACAACCCCGCCCT
GCACATAGGCACCATCAGTGCCACAGACTCAGACTCAGGCTCCAATGCCACATCACATACTCGCTGCTG
CCGCCCATGACCTACAGCTGTCCCTTGCTCGCTGGTCTCCATCAATGCAGACAACGGACAGCTGTTCC
CTCTCAGGGCAATGGACTATGAGGCCCTACAGGCCTTTGAATTCATGTGGTTGCCAGAGATGGAGGCTC
ACCTGCGCTCAGCAGCCAGGCTCTGGTGCCTGGTGGTGGTGGTGGATGACAATGACAATGCGCCCTCATT
CTCTACCCGATGCAGAACGCCTCTGCGCCCTGCACTGAGCTGCTGCCAGGGCTGCGGAGCCTGGCTACC
TGGTAACCAAAGTGGTGGCAGTGGACTCTGACTCGGGCCAGAATGCTTGGCTGTCATTCCAGTTGCTCAA
GGCCACGGAACCTGGGTTGTTACAGCTGTGGGCTCACAATGGCGAGGTGCGCACACCAGGCTGCTGAGT
GAACGAGATGTACCAAGCACAGGCTGCTGTTGCTGGTCAAGGACAATGGAGAACCTCCGCGGTCTGCCA
GCGTCACTCTTCAATGTGCTGCTAGTGGATGGCTTCTCTCAGCCCTACCTGCCTCTGCCTGAGGTGCAGCA
CGACTCTTACAGGATGAAGACATGCTCACACTTACCTGGTCAATGCCTTGGCCTCTGTGCTTCTCTC
TTCTCTGTCTGTGCTGCTGTTCTGTTGGGGTGGGCTTTCAGGAGGGTCAAGGAGGCTCTCTGGGTG
CCTGCTGTGCCGAGGGACACTTTTCTGGCCACTTGTGGATGTCAGCGGTATGGGGACATTGCCCCA
GAGCTACCAGTATGAGGTGTGCTGAGCGGAGACTCTGGGACAACAGATTTCAAATTCCTGAACCATTAT
TCACAA

ACGCGTACGCGGCCGCTCGAG - GFP Tag - GTTTAA

Protein Sequence: >MG214534 representing NM_053131
 Red=Cloning site Green=Tags(s)

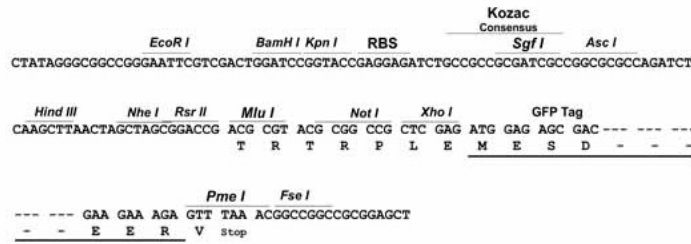
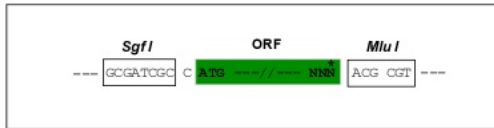
METTLAKTPEKRQVFLAII LLLWEAGSEAIRYSIPEETESGYLVAHLAKDLGFRV GELATRRARIHHRG
 NKELLQLDVETGNLLLEKPDREALCGATEPCVLHFQIILENPVQFFQTE LQLTDINDHSPEFPDTEMLL
 KIQESTQPATVFLKAAQSDIGSNAVQNYTVSPNLHFHVVTLSRSDGRKYPELVLDRALDREEQPELTL
 ILTALDGGAPPKSGTTTTVRIEVDINDNAPEFVQSLYSVEVPENSPLDALVVTVSARDLDAGIHGNVAYS
 LFQGGGGPQPFVIDEITGEIRLKGALDFEATSYYTMEIVATDSGGLSGKCTVAIQVLDVNDNAPKLTISS
 LTSSIPENAPEAVVAVFVSVDPSGDNGRMVCSIQNELPFLKPTFENYTLAAEGPLDREIREEYNITI
 IVSDLGTPRLTTQHTITVQVVDINDNAPFTQTSYTMFVHENNNPALHIGTISATDSDSGSNAHITYSLL
 PPHDLQLSLASLVSINADNGQLFALRAMDYEALQAFEFHVVARDDGGSPALSSQALVRVVLDNDNAPFI
 LYPMQNASAPCTELLPRAAEPGYLVTKVAVDSDSGQNAWLSFQLLKATEPGLFSVWAHNGEVRTTRLLS
 ERDVPKHRLLLLVKDNGEPPRSASVTLHVLLVDGFSQPYLPLPEVQHDSSQDEDM LTYLVIALASVSSL
 FLLSVLLFVGVRLCRRVREASLGACSVPEGHFSGHLVDVSGMGTLSQSYQYEVCLSGDSGTTDFKFLNHYSQ

TRTRPLE - GFP Tag - V

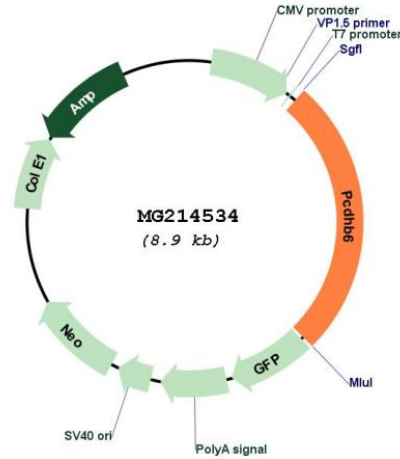
Restriction Sites: SgfI-MluI

Cloning Scheme:

Cloning sites used for ORF Shuttling:



Plasmid Map:



ACCN: NM_053131

ORF Size: 2316 bp

OTI Disclaimer: The molecular sequence of this clone aligns with the gene accession number as a point of reference only. However, individual transcript sequences of the same gene can differ through naturally occurring variations (e.g. polymorphisms), each with its own valid existence. This clone is substantially in agreement with the reference, but a complete review of all prevailing variants is recommended prior to use. [More info](#)

OTI Annotation: This clone was engineered to express the complete ORF with an expression tag. Expression varies depending on the nature of the gene.

Components: The ORF clone is ion-exchange column purified and shipped in a 2D barcoded Matrix tube containing 10ug of transfection-ready, dried plasmid DNA (reconstitute with 100 ul of water).

Reconstitution Method:

1. Centrifuge at 5,000xg for 5min.
2. Carefully open the tube and add 100ul of sterile water to dissolve the DNA.
3. Close the tube and incubate for 10 minutes at room temperature.
4. Briefly vortex the tube and then do a quick spin (less than 5000xg) to concentrate the liquid at the bottom.
5. Store the suspended plasmid at -20°C. The DNA is stable for at least one year from date of shipping when stored at -20°C.

RefSeq: [NM_053131.2](#)

RefSeq Size: 2319 bp

RefSeq ORF: 2319 bp

Locus ID: 93877

UniProt ID: [Q91XZ4](#)

Cytogenetics: 18 B3

Gene Summary:

Calcium-dependent cell-adhesion protein involved in cells self-recognition and non-self discrimination (PubMed:27161523). Thereby, it is involved in the establishment and maintenance of specific neuronal connections in the brain (PubMed:27161523).
[UniProtKB/Swiss-Prot Function]