

Product datasheet for **MG214520**

Pira2 (NM_011089) Mouse Tagged ORF Clone

Product data:

Product Type:	Expression Plasmids
Tag:	TurboGFP
Symbol:	Pira2
Synonyms:	6M23
Mammalian Cell Selection:	Neomycin
Vector:	pCMV6-AC-GFP (PS100010)
E. coli Selection:	Ampicillin (100 ug/mL)



ORF Nucleotide Sequence: >MG214520 representing NM_011089
 Red=Cloning site Blue=ORF Green=Tags(s)

TTTTGTAATACGACTACTATAGGGCGCCGGGAATTCGTGACTGGATCCGGTACCGAGGAGATCTGCC
 GCCGCGATCGCC

ATGTCCTGCACCTTACAGCCCTGCTGTCTTGGACTGACTCTGAGCCTCTGGATCCCAGTGCTGACAG
 GGTCCCTCCCTAAGCCTATCCTCAGAGTACAGCCAGACTCTGTGGTCTCCAGGAGGACTAAGGTGACCTT
 CTTGTGTGAGGAGACAATTGGAGCCAATGAGTACCGCCTCTATAAAGATGGAAGCTATATAAAACCGTA
 ACAAAGAACAACAGAAGCCAGCAACAAGGCTGAATTCATTCTCAAATGTAGACCTGAGTAATGCAG
 GTCAATATGAATGTTCTACAGCACCCAGTATAAATCATCAGGCTACAGTGACCCCTGAAGCTGGTGGT
 GACAGAAGACTACTGGACACCAGCCTTTAGCCAGGCCAGCCAGTGGTAACCTTACAGGAGGTATGTC
 ACCCTCCAGTGTGAGTCTGGCCGAGCTATGACAGTTTCTTTGACTGTAGCAGGACCACAGAAGTTCT
 CATGGACACAAGACTCACAGTAACTACTCTACACGGAAGAACCAGCCCTGTTCTGTGGGCCCTGT
 GACCCCAACCAGAGATGGATATTCAGATGTTACAGTTATGACAGGAATAGACCATATGTGTTCTCAGCT
 CCAAGTGAATCCGTGGAGCTCCTGGTCTCAGGTAATCTCAAAAACCAACCATCAAGGCTGAACCAGGAT
 CTGTGATCACCTCCAAAAGAGCAATGACCATCTGGTGTGAGGGAACTGGATGCAGAAGTATATTTTCT
 GCATAATGAGAAAAGCCAAAAACACAGAGCACACAGACCCTACAGGAGCCTGGGAACAAGGGCAGGTTT
 TTCATCCCTTCTGTGACACAACAACATGCAGGGCAATATCGCTGTATTGTTACAGCTCAGCTGGTGGT
 CACAGCCAGTGACACCCTGGAGCTGGTGGTGCAGGAATCTATGAATACTATGAACCCAGGCTGTCAGT
 ACTGCCAGCCCTGTGGTGCAGCAGGAGGAACATGACACTCCACTGTGCCTCAGACTTTCACTACGAT
 AAATTCATTCTACCAAGGAAGATAAGAAATTCACCAGCTCACTGGACACAGAGCATATATCTTCTAGTA
 GACAGTACCGAGCCCTGTTTATTATAGGACCCACAACCCCAACCCACAGGGACATTCAGATGTTATGG
 TTAACAAGAATGCCCCACAGCTGTGGTCACTACCTAGTGTCTTCAACAAAATACTCATCTCAGGGCTG
 TCCAAGAAGCCCTCTCTGCTGACTACCAAGGCCATACCCTGGACCCTGGAATGACCCTCACCTGCAGT
 GTTCTCTGACATCAACTATGACAGATATGCTCTGCACAAGGTGGGAGAGCTGACATCATGCAGCACTC
 TAGCCAGCAGACTGACTGGCTTCTGTGGCCAACCTCACACTGGCTATGTGAGTAGCTCCACTGGA
 GGCCAATACAGATGCTATGGTGCACACAACCTCTCCTCTGAGTGGTCCAGTCCAGTCCAGCCCTGGACA
 TCCTGATCACAGGACAGCTCCCTCTCACTCCTCCCTCTCAGTGCAGCCTAACCCACAGTGCAGTCCAGG
 AGAGACCGTGAGCCTGCTGTGTTGGTCAATGGACTCTGTGGATACTTTCATTCTGTCCAAGGAGGGATCA
 GCCCAGCAACCCCTGCGACTAAAATCAAAGTCCCATGATCAGCAGTCCCAGGCAGAATTCTCCATGAGTG
 CTGTGACCTCCATCTCTCAGGCACCTACAGGTGCTATGGAGCTCAAGACTCATCTTTCTACCTCTGTGTC
 ATCTGCCAGTGCCCTGTGGAGCTCACAGTCTCAGAAACCATTGAATCCTCCACCTGGTCTCCAAAAGG
 CCCATCCCACCAATTCCCACAGAGAACAAGGATCACACAATGGAGAATCTCATCAGGATGGGGATGGCAG
 TCCTGGTCTCATGCTCTTCGATTCTAGCCACTGAGGCTTGCGAAGCCATAGACAGACCCACCTGC
 AGCTGGGAAC

ACGCGTACGCGGCCGCTCGAG - GFP Tag - GTTTAA

Protein Sequence: >MG214520 representing NM_011089
 Red=Cloning site Green=Tags(s)

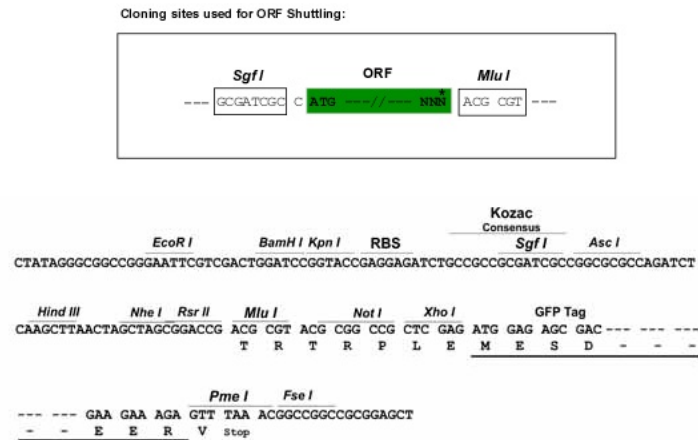
MSCFTALLCLGLTSLWIPVLTGSLPKPILRVQPDVSVSRRTKVTFLEETIGANEYRLYKDGKLYKTV
 TKNKQKPAKAEFSFNVDLNAGQYECYSYSTQYKSSGYSPLKLVVTEYDWPVSLSAQASPVVTSGGYV
 TLQCESWPSYDRFILTVAGPQKFSWTQDSQYNYSTRKNHALFSVGPVTPNQRIWIFRCYSYDRNRPVYVFA
 PSESVELLVSGNLQKPTIKAEPGSVITSKRAMTIWCQGNLDAEVYFLHNEKSQKTQSTQTLQEPGNKGRF
 FIPSVTQQHAGQYRCYCYSSAGWSQPSDLELVTGTIYEYEPRLSVLPSVVTAGGNMTHCASDFHYD
 KFILTKEKFKTSSLDTEHISSRQYRALFIIGPTTPTHTGTFRCYGYYKNAPQLWSVPSALQQLISGL
 SKKPSLLTHQGHLDLPGMTLTLQCFSDINYDRYALHKVGRADIMQHSSQQTDTGFSVANFTLGYVSSSTG
 GQYRCYGAHNLSSSEWSASSEPLDILITGQLPLTPSLSVQPNHTVHSGETVSLLCWSMDSVDFTILSKEGS
 AQQPLRLKSKSHDQSQAEFSMAVTSLSGTYRCYGAQDSSFYLLSSASAPVELTVSETIESSTWSPKR
 PIPPIPTENKDHTMENLIRMGMAVLVLIVLSILATEAWRSHRQTHPAAGN

TRTRPLE - GFP Tag - V

Chromatograms: https://cdn.origene.com/chromatograms/ja1730_c04.zip

Restriction Sites: SgfI-MluI

Cloning Scheme:



ACCN: NM_011089

ORF Size: 2040 bp

OTI Disclaimer: The molecular sequence of this clone aligns with the gene accession number as a point of reference only. However, individual transcript sequences of the same gene can differ through naturally occurring variations (e.g. polymorphisms), each with its own valid existence. This clone is substantially in agreement with the reference, but a complete review of all prevailing variants is recommended prior to use. [More info](#)

OTI Annotation: This clone was engineered to express the complete ORF with an expression tag. Expression varies depending on the nature of the gene.

Components: The ORF clone is ion-exchange column purified and shipped in a 2D barcoded Matrix tube containing 10ug of transfection-ready, dried plasmid DNA (reconstitute with 100 ul of water).

Reconstitution Method:

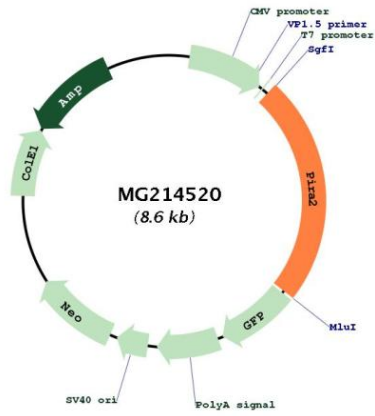
1. Centrifuge at 5,000xg for 5min.
2. Carefully open the tube and add 100ul of sterile water to dissolve the DNA.
3. Close the tube and incubate for 10 minutes at room temperature.
4. Briefly vortex the tube and then do a quick spin (less than 5000xg) to concentrate the liquid at the bottom.
5. Store the suspended plasmid at -20°C. The DNA is stable for at least one year from date of shipping when stored at -20°C.

Note: Plasmids are not sterile. For experiments where strict sterility is required, filtration with 0.22um filter is required.

RefSeq: [NM_011089.2](#), [NP_035219.2](#)

RefSeq Size: 3464 bp
 RefSeq ORF: 2043 bp
 Locus ID: 18725
 Cytogenetics: 7 A1

Product images:



Circular map for MG214520