

Product datasheet for **MG214512**

Nrde2 (NM_183155) Mouse Tagged ORF Clone

Product data:

Product Type:	Expression Plasmids
Product Name:	Nrde2 (NM_183155) Mouse Tagged ORF Clone
Tag:	TurboGFP
Symbol:	Nrde2
Synonyms:	6720454P05Rik
Mammalian Cell Selection:	Neomycin
Vector:	pCMV6-AC-GFP (PS100010)
E. coli Selection:	Ampicillin (100 ug/mL)
ORF Nucleotide Sequence:	>MG214512 representing NM_183155 Red=Cloning site Blue=ORF Green=Tags(s)

TTTTGTAATACGACTCACTATAGGGCGGCCGGAATTCGTCGACTGGATCCGGTACCGAGGAGATCTGCC
GCC**CGATCGCC**

ATGGCGCTGTTCCCGGCTTTTGC GGACGTAAGTGAGGCCTCCGGTGATGGGGCATTAGGAAAGAGTTAG
ATTGGCTGAGCAACCAAGCTTTCTGTTGAAATCTAACTTCTCTGAGCCGACAACTGAAGAGGTCAC
AGCCCTTGCTTCTGAAGGGTCACCACCGCAAGGAGTCTCTGAAGTCAGAGCTCTCAGGTGAGAGCAAC
ACTAGCGAGAAGCTCGCACAGACAAGCAGGAAGAAGAAGGAGAAAAAGAAGAGACGGAAGCATCAGC
ACCACAGGAAAACCAAGAGGAGGCACGAGCAGTTGAGCAGCAGCGGCTCTGAGTCAGACACAGAGGCTGG
GAAGGACAGGGCTTCCCGGAGCATCAGGGACGACCAGAAGGAAGCCGAGAAACCCGTGACAGGAAGCAAT
GCGGCTGCTGCTGTTGCTGCTGCTGGACATCGGTCCATTTGGCTGGAAGATATTACGATCTGACCG
ACGTCTTCAGGACTGATAAGAAGCCAGATCCTGCCAAGTGGGAGTATAAATCTCTGTATCGTGGGATAT
AGCAAGGTACAAGAGGAAGGGAGACTCCTGCCTGGGTATCAATCCTAAGAAACAGTGTATATCTTGGGAA
GGGCTTCTGCAGCAAAGAAGCACTCACACAGGCACCTGGAGCGTATTTTACCAAGAAGAATGTGGGGT
TAATGAGAACAGAGGGCATTGCTGTGTGCAGTAACCCCGAGCCTGCCTCCTCCGAGCCCGTCACATTCAT
CCCAGTGAAGGACTCTGCTGAGGCAGCTACTCCTGTTACATCATGGCTGAATCCTCTGGGATTTATGAT
CAGTCTACCACACAGTGGTTACAAGGACAGGGTCCAGCAGAGCAAGAGTCAAAGCAGCCGACTCGCAAC
AGGACAGGGAGAATGCTGCTCTCAAGCCAGAGTGGAAGAGTTTAAACAGAAGGGTTCGGGAGAATCCTTG
GGACACGCAACTATGGATGGCGTTTGTGGCTTTCCAGGACGAGGTCATGAGGAGTCTGGCATCTATGCC
CTTGGGAAGGAGAACAGGAGAAGCACAGGAAGTCCCTGAAGCTCCTCCTGGAGAAGAAGCTGGCTGTGC
TGGAGCGGGCCATCGAGAGCAACCCAGGCAGCGTGGAGCTGAAGCTTGCCAAGCTGCAGCTGTGCTCAGA
GTTCTGGGAGCCAGTGCCTGGCCAAGGAGTGGCAGAAGCTCCTCTCCTGCACCCCAACAACAAGC
CTGTGGCAGCGCTATCTCCTTTTGGCAGAGCCAGTTTGGTACCTTTTCTGTGTCCAACTCCACAGTC
TGTATGGCAAGTCTTGAGTACCTTGTCTGCTGTTAAAGATGGCAGCATGCTATCCACCCTGTGTTGCC
GGGACCGAGGAGCCATGTTTGGGCTTTTCTCAGCAGTGCCACTTTCTACGGCAGGCTGGCCACTCA



[View online »](#)

GAGAAGGTCATCTCTTTGTTCCAGGCCATGGTTGACTTCACCTTCTTCAAGCCTGACAGTGTGAAAGAGC
TGCCACTAAAGTACAGGTGGAATTCCTTGAGCCCTTCTGGGACAGCGGAGAACCACGCTTGGGGAGAA
GGGAGCCCAGGCTGGCGGGCGTGGATGCACCAACAGGAGCGAGGTGGCTGGGTGCTCATCACCCAGAT
GAGGATGACGAGGAGCCCGAAGAGGAGGACCAGGAGATAAAAGACAAGACCCTGCCCCGGTGGCAGATCT
GGCTTGCTGTTGAGCGTTCTCGAGACCAGAGGCACTGGCGTCCCTGGCGCCCTGATAAGACCAAGAAGCA
AACGGAGGAAGACTGTGAGGACCCTGAGAGACAGGTGCTGTTTGTGACATTGGGCAATCTTTGATCAGA
CTTTCCAGCCCAGACCTTCAGTTCAGTCCAGTCCATCCAGGCCTTTCGCAGTTCCTGGGCGTGCCTCCGGCT
TCCTGCCCCAGCCTCCTGCCTTTACCTGGCCATGGACGAGAGCAGCATCTTTGAGAGTGAACCTTTATGA
TGAAGAGCCCTGACTTACTTCAACCCTTCCTTTTCGGGCATTAGCTGTGTCGGTCCATGGAACAGTTG
GGTCGCCCTCGCTGGACCAAAGTCAACAACGAGAGGGCGAGGAGTTTGTCCGCAATGTCTTCCACCTGG
TGCTGCCTTTGCTCGCAGGCAAGCAGAAGTCCCAGCTCAGCCTCTCCTGGTTACGGTACGAGATTGCAAA
GGTCATTTGGTGTCTACACACTAAAAAGAAGCGATTGAAGTCTCAGGGAAGAGCTGCAAAAACTAGCC
AAGAATCTCCTCAAGGAGCCAGAAAACCGCAACAACCTTCTGCCTCTGGAAGCAGTATGCACACCTGGAGT
GGTTGCTCGGTAACACAGAGGATGCCAGAAAAGTGTTCGACACAGCACTCAGCATGGCAGGCAGCAGCGA
GCTGAAGGACCGTGAACCTGCGAGCTCAGTCTGCTCTATGCCGAGCTGGAGATGGAACCTGTCGCCGGAC
TCGAGAGGAGCCACCACAGGCCGAGCGGTCCACATATTAAACAGGCTGACGGAGAGCAGTCCCTACGGGC
CCTACACGGGGCAGGTCTCGTCCACCCAGGTGCTGAAAGCTCGGAAGGCTTACGAGCTCGCGCTGCAGGA
CTGCCTGGGCCAGAGCTGTGCCTCCAGCCAGCTCCTGCAGAGGCCTTGGACTGCCTGGGTAGCTTGGTC
CGATGCTTTATGCTCTTCCAGTATTTGACTGTGGGCATTGATGCTGCTGTGCAGATATACGGAAGGGTGT
TTGCCAAGCTGAAGGGCTCTGCTCGCTTAGAAGACCCAGGGCCAGAGGACAGCACCAGCTCCCAGAGTTT
GACCAATGTGCTCGAGGCTGTCAGCATGATGCACACAAGCCTGCTGCGATTCCACATGAACGTTTGTGTT
TACCCTTGGCTCCACTCCGAGAGACCCTCTCCGATGCTTTAAAGCTGTATCCGGCAACCAGGTTCTTT
GGAGGGCTTATGTACAGATTCAGAATAAGTCCCACAGTGTAAACAAGACCAGAAGTTCTTTGACACAGT
TACTAGGTCTGCCAAACATTTGGAGCCTTGGCTATTTGCAATCGAAGCTGAGAAGCTGAGAAAAAGCTA
GTGGAATCTGTTTCAAGGGTAGGAGGCAGAGAGGTCCATGCAACAATCCCCGAGACTGGCCTTACGCATC
GCATCAGAGCTTTGTTTAAAAATGCGATTTCGGAGCGACAAGGGCAACCAGTGTCCCTACTGTGGAGGAT
GTATTTGAATTTTTTGGTTTCTTAGGAAACAAAGAAAGAAGCAAGGCGTGTCTACAAGGCCCTCCAG
AGCTGTCTTGGGCAAAGGTGCTATACATGGACGCCATGGAGTATTTCCAGACGAGCTGCAGGAGATCC
TGGACGTGATGACCGAGAAGGAGCTCCGTGTGCGCTGCCCTTGAGGAGCTGGAGCTGCTGCTGGAGGA
T

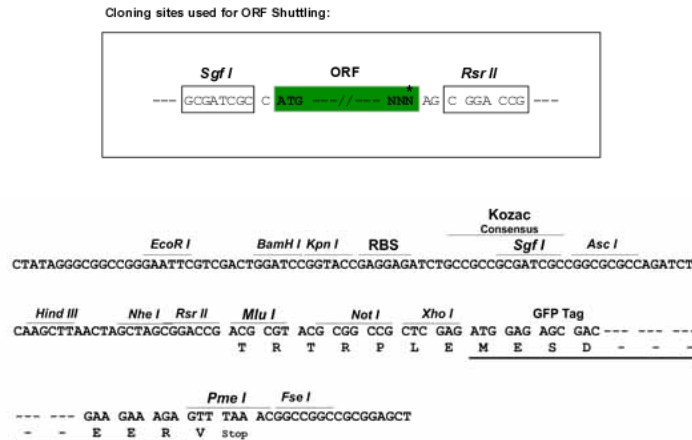
AGCGGACCGACGCGTACGCGGCCGCTCGAG - GFP Tag - GTTTAA

Protein Sequence: >MG214512 representing NM_183155
 Red=Cloning site Green=Tags(s)

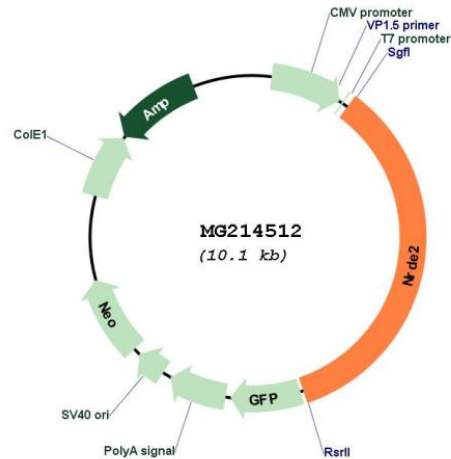
MALFPAFADVSEASGDGAFRKELDWLSNPSFRVGNLTSLSRQTEEVTALASEGSPPPRSPLKSELSGESN
 TSEKLAQTSRKKKKEKKRRKHQHHRKTKRRHEQLSSSGSESDTEAGKDRASRSIRDDQKEAEKPCQGSN
 AAAAVAAAAGHRSIWLEIDIHDLTDVFRDCKKDPANWEYKSLYRGIARYKRGDSCGLINPKKQCISWE
 GASAARKHSHRHLERYFTKKNVGLMRTEGIAVCSNPEPASSEPVTFIPVKDSAEAAATPVTSWLNPLGIYD
 QSTTQWLQGGPAEQESKQPDSDQDRENAALKARVEEFNRRVRENPDWTLWMAFVAFQDEVMRSPGIYA
 LGEQEKEHRKSLKLLLEKLAFLERAIESNPGSVLKLAKLQLCSEFWEPSALAKEWQKLLFLHPNNTS
 LWQRYLSFCQSQFGTFSVSKLHSLYGKCLSTLSAVKDGSMLSHPVLPGTTEEAMFGLFLQQCHFLRQAGHS
 EKVISLQFAMVDFTFKPDVSKELPTKVQVEFFEPFWDSEPRVGEKARGWRAMHQQERGGWVITPD
 EDDEEPEEEDQEIKDKTLPRWQIWLAVERSRDRHWRPWRPDKTKKQTEEDCEDPERQVLFDDIGQSLIR
 LSSPDLQFQLIQAFQLQFVPSGFLPPASCLYLAMDESSIFESELYDEKPLTYFNPSFGISCVGSMEQL
 GRPRWTKGHNREGEEFVRNVFHLVPLLAGKQKSQLSLSWLRYEIAKVIWCLHTKKRKLKSGKSCCKLA
 KNLLKEPENRNNFCLWKQYAHLEWLLGNTEDARKVFDALSMAGSSELKDRELCELLYAELEMELESPD
 SRGATTGRAVHILTRLTESSPYGPTYGQVSSTQVLKARKAYELALQDCLGQSCASSPAPAEALDCLGSLV
 RCFMLFQYLVGIDAAVQIYGRVFAKLKGSARLEDPGEDSTSSQSLTNVLEAVSMMHTSLLRFHMNVCV
 YPLAPLRETLSDALKLYPGNQVLWRAYVQIQNKSHSANKTRRFDDTVTRS AKHLEPWLFAIEAEKLRKLL
 VESVQRVGGREVVHATIPETGLTHRIRALFENAIKSDKGNQCPLLWRMYLNFLVSLGNKERSKGVFYKALQ
 SCPWAKVLYMDAMEYFPDELQEI LDVMTKEKLRVRLPLELELELLED

SGPTRRRLE - GFP Tag - V

Restriction Sites: SgfI-RsrII
 Cloning Scheme:



Plasmid Map:



ACCN: NM_183155

ORF Size: 3501 bp

OTI Disclaimer: The molecular sequence of this clone aligns with the gene accession number as a point of reference only. However, individual transcript sequences of the same gene can differ through naturally occurring variations (e.g. polymorphisms), each with its own valid existence. This clone is substantially in agreement with the reference, but a complete review of all prevailing variants is recommended prior to use. [More info](#)

OTI Annotation: This clone was engineered to express the complete ORF with an expression tag. Expression varies depending on the nature of the gene.

Components: The ORF clone is ion-exchange column purified and shipped in a 2D barcoded Matrix tube containing 10ug of transfection-ready, dried plasmid DNA (reconstitute with 100 ul of water).

Reconstitution Method:

1. Centrifuge at 5,000xg for 5min.
2. Carefully open the tube and add 100ul of sterile water to dissolve the DNA.
3. Close the tube and incubate for 10 minutes at room temperature.
4. Briefly vortex the tube and then do a quick spin (less than 5000xg) to concentrate the liquid at the bottom.
5. Store the suspended plasmid at -20°C. The DNA is stable for at least one year from date of shipping when stored at -20°C.

RefSeq: [NM_183155.3](#), [NP_898978.2](#)

RefSeq Size: 3708 bp

RefSeq ORF: 3504 bp

Locus ID: 217827

Cytogenetics: 12 E

Gene Summary:

Protein of the nuclear speckles that regulates RNA degradation and export from the nucleus through its interaction with MTREX an essential factor directing various RNAs to exosomal degradation. Changes the conformation of MTREX, precluding its association with the nuclear exosome and interaction with proteins required for its function in RNA exosomal degradation. Negatively regulates, for instance, the degradation of mRNAs and lncRNAs by inhibiting their MTREX-mediated recruitment to nuclear exosome. By preventing the degradation of RNAs in the nucleus, it promotes their export to the cytoplasm. [UniProtKB/Swiss-Prot Function]