

Product datasheet for **MG214507**

Samt4 (NM_029199) Mouse Tagged ORF Clone

Product data:

Product Type: Expression Plasmids
Tag: TurboGFP
Symbol: Samt4
Synonyms: 4930542N07Rik
Mammalian Cell Selection: Neomycin
Vector: pCMV6-AC-GFP (PS100010)
E. coli Selection: Ampicillin (100 ug/mL)

ORF Nucleotide Sequence: >MG214507 representing NM_029199
 Red=Cloning site Blue=ORF Green=Tags(s)

TTTTGTAATACGACTCACTATAGGGCGCCGGGAATTCGTCGACTGGATCCGGTACCGAGGAGATCTGCC
 GCCGCGATCGCC

ATGGATCTCTTCACCCTTGATACACAAAGATTTTCAAAGAGAAGAAGAGTATCTTCAAGTTGACTGGCC
 TCTTTAGCAGCCTATCAGCTTTGGTGTGTTGAAATAGCCATTGCCAGCAATCAATGCTGGCGCCTATGGGA
 ATTTGAAGACGATGATGACAGTTTGTGTCCTTTGGACTTTGGGGAGCTTATTACCCTAAATATTTAAC
 ATCTCAGGAACACTAGTCAAGATGCTGGTTCACAACCCTATTGATCAACTGGACCATTCACTTGAAT
 TTCAGTATGCACAGAACCCTGATATTATGGGCTATTTTATGAAGCTTGATGTTCTGGTTTTCAAGTGTGAT
 AGCTTTTCAGGATTAGCTGCATGAAAGATCCATTTCTAATGATGCAGATATATTGCTACAAGTTCTCTACC
 TTAGTTTTGGGTATTAGCAGTCTTTTATATTTGTTGCTGTGAGCTGGAACCATATGGTAGATCTTTATG
 GCCAACTACTCTTGACTTTCCACCCAAATTTCTGTCCAGAAAGAAGCCTTGAAAAACAAATATGTGAC
 TGCTGTATTTCCAGTGGGAATCCTGACTGCAACCATGTCACTTTTTGGTGGGATCATGTTTCTTTCTGAG
 ATAAGCTATTTGAAAATACAGAGTCAAGTTGAGGCCAAGAGTGTTCCAAAGTGGCCCTTCAAGAGGCC

ACGCGTACGCGGCCGCTCGAG - GFP Tag - GTTTAA

Protein Sequence: >MG214507 representing NM_029199
 Red=Cloning site Green=Tags(s)

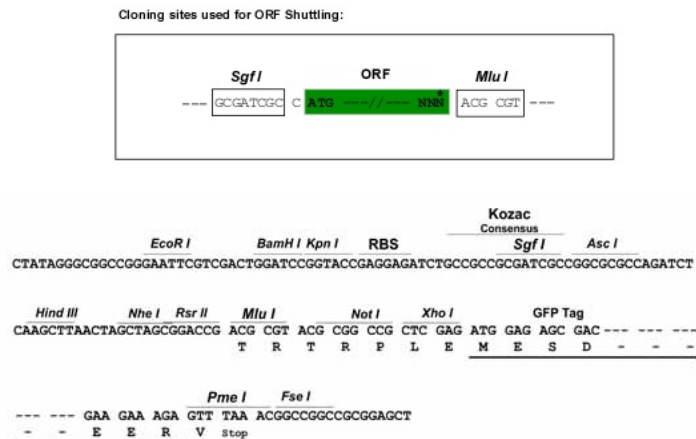
MDLFTLDTQRF SKEKKSIFKLTGLFSSLSALVFEIAIASNQCWRLWFEDEDDVQFVSFGLWGAYYPKLFN
 ISGTLVKMLVHNPIDSTWTISLEFQYAQNILWAIKLVVLFVSVIAFRISCMKDPFLMMQIYCYKFST
 LVLGISSLFIFVAVSWNHMVDLYGQTTLDFFPKFPVQKEALKNKYVTA VFPVIGILTATMSLFGGIMFLSE
 ISYLKIQSQVEAKSVSKVALQEA

TRTRPLE - GFP Tag - V



Restriction Sites: SgfI-MluI

Cloning Scheme:



ACCN: NM_029199

ORF Size: 699 bp

OTI Disclaimer: The molecular sequence of this clone aligns with the gene accession number as a point of reference only. However, individual transcript sequences of the same gene can differ through naturally occurring variations (e.g. polymorphisms), each with its own valid existence. This clone is substantially in agreement with the reference, but a complete review of all prevailing variants is recommended prior to use. [More info](#)

OTI Annotation: This clone was engineered to express the complete ORF with an expression tag. Expression varies depending on the nature of the gene.

Components: The ORF clone is ion-exchange column purified and shipped in a 2D barcoded Matrix tube containing 10ug of transfection-ready, dried plasmid DNA (reconstitute with 100 ul of water).

Reconstitution Method:

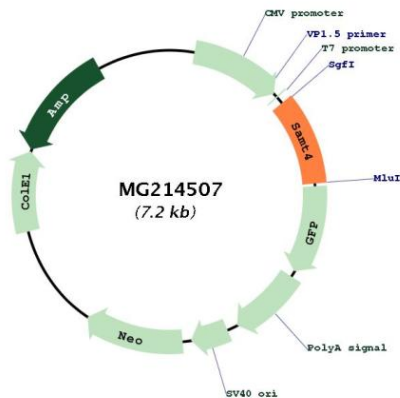
1. Centrifuge at 5,000xg for 5min.
2. Carefully open the tube and add 100ul of sterile water to dissolve the DNA.
3. Close the tube and incubate for 10 minutes at room temperature.
4. Briefly vortex the tube and then do a quick spin (less than 5000xg) to concentrate the liquid at the bottom.
5. Store the suspended plasmid at -20°C. The DNA is stable for at least one year from date of shipping when stored at -20°C.

Note: Plasmids are not sterile. For experiments where strict sterility is required, filtration with 0.22um filter is required.

RefSeq: [NM_029199.2](#), [NP_083475.1](#)

RefSeq Size: 963 bp
 RefSeq ORF: 702 bp
 Locus ID: 75185
 Cytogenetics: X F3

Product images:



Circular map for MG214507