

Product datasheet for **MG214469**

Vmn2r110 (NM_001104572) Mouse Tagged ORF Clone

Product data:

Product Type:	Expression Plasmids
Tag:	TurboGFP
Symbol:	Vmn2r110
Synonyms:	EG224582
Mammalian Cell Selection:	Neomycin
Vector:	pCMV6-AC-GFP (PS100010)
E. coli Selection:	Ampicillin (100 ug/mL)



ORF Nucleotide Sequence: >MG214469 representing NM_001104572
Red=Cloning site Blue=ORF Green=Tags(s)

TTTTGTAATACGACTCACTATAGGGCGCCGGGAATTCGTGCGACTGGATCCGGTACCGAGGAGATCTGCC
GCCGCGATCGCC

ATGTTCTACTGTATTTTTATTTCTGCTTCTTACATATTTCCAAAGTTGTTTCTGAGGCTATGACTGTAA
ATATCAGTCTGTGCTTTTACAAAACCCCTGAAGAATTTCCACCATGAAGGAGATGTTGTAATAGGTGCATT
TTTTCTATTTCATACTTACTACTCTCCAAACAAAGTTCCTCATCCATCAGTACCATACAAATATATGGAC
AATTATTTACAATAAATTTTAAAGAACTACCAGTATATCCTGGCTTTGGTGTGGTATTGAGGAGATCA
ATGAGAACCCTAATCTTTTACCCAACATATCTCTGGATTTGATTTCTACAATGTCAGATTCAGTACGAGAA
GGAACTCTTATGAATGTGTGTTTTGGCTCACTGGACAAGGGCAGAAAAAGATTTTACCAAATTAAT
TGTGCCAAAAATAATTTACTACTGCCCTCACAGGAACATCATGGACAACATCTGCCAAATTTGGAACAT
TACTTCAACTCTTAAATTTCTCAGCTTTCTTTGGACCCTATGATCCCATTTTGGTGGCCGTGGTCA
ATATTTCTCTCTACCAGATGGCCCCAAGTACTCATCAATTTACGTGGCATTGTATCTTTGATGGTT
CATTTTAGGTGGTCTGGGTTGGTCTCATCTCCAGATGACCACAAAGGTATATAATTTTATCAGAAC
TCAGAGAAGATATGGAGAGAAAAGGAGTCTGCATAGCTTTTGTGAAAATGATCCTTCTCACATTGACTTC
ATATTAAACAAATTTCTGGGAAAATATGGATAAGACAAATGTCATAATTTACGGTGATGTTGATTCA
CTCACAGGTCTAATGAGAAAATTTGGGCAAAGATTGTTGACAGCAAAGTCTGGGTCATGAATTTGAAC
CTCATATTACTGACTATGCTGACTATTTTCATGTTTACTCTTTCCATGGTAGCCTAATTTTACCCACAA
GTATAGAGAGAGCTTTGATCTTACTACATTTTCAAACAGTTAATCCTTACAATACCCTGAAGACATT
TACCTTCTAAGTATGGCATTGTTCTTCAAGTGCTCATTCTGATATTGATTGTCTACTATTGGCTA
ACTGTCAATCCAATGCTTCTCTGGATGTGTACCTAGTCATATATTGGACATGACAATCAGTGAAGAAAG
CAATAATATCTATAATGCTGTGTATGCTGTGGCTCACAGTCTCCATCAGATGAGTCTTCAACAAGTACAA
AAACAACCACATGAAAATGGGGAAGCAATGGCCTTCTTCCCCTGGCAGCTTAACATTTTCTGAAGGACA
TTAATGAGAGAGGCAACATAAGTTTAGATTGGAGACATAAATTAATGGAGAATATGATATTTCTAACCT
TTGAAATTTACAAAGGTCTTGGACAAAAGGTGAAAATAGGATCCTTTTTCAGCAAATGCTCCTGAAGGC
CAACAGTTGTCTTATCTGAGCATATGATACAATGGGCAGGAGGATTTTTCAGAGATCCCTCAGTCTGTGT
GCAGTGAGAGTTGTAGGCCTGGATTGAGAAAAGTAAATCCTGGAGGGCAAGGCCATCTGCTGTACAATTG
CACTCCTTGTGAGACAATGAGATTCTAATGAGACAGATGTGGATCAGTGTGTGAAATGTCAGAGAGT
CATTATGCAAATACAGAGAAGAATCACTGCTTCCAGAAAACGTTAGCTTTCTGGCCTATGAAGGCCCT
TGGGGATTACACTGGCCAGCATAACTCTGTGCTTATCTGCACTCACAGCTTTTGTAAATGGGGTCTTTGT
GAAATACAGAGACTCCCATTTGTGAAAGCCAATAATAGAGGTCTCAGTTACACTTTGCTCATCACAAATC
ACCTTCTGTTTACTCTGTTCTTTGAACTTCATTGGTCAACCAATACAGCCTCCTGCATCCTTCAGCAGA
ACATATTTGGAGTTGCATTCACTGTGGCTCTAGCTACCGTGTGGCCAAAGCTATCACTGTGGTCATTGC
CTTCAAGGCCACCTTTCCAGGGAGAATGGTGAAGTGGTTAATGACCTCAAGAGCTCCAAACTATATAATT
CCTATTTGTACCCTGATCCAATCTTCTTTGTGGAATATGGATGGCAACATCTCCTCCATTTATTGACC
AAGATGTTGATGCTGAACATGGACAAATCTACTGTTTTGCAACAAGGGATCATCTGTTGCCTTCCACTG
TGTTCTGGGATACCTCTGCTCCTTGGCTCTTGGGGTTACACCATGGCATTCCATCTAGAAATCTGCCT
GATACATTCAATGAATCCAAATTTCTGTCAATCAGCATGCTGGTGTCTTCTGTGTCTGGGTCCACCTTC
TTCTGTCTACCACAGCACTAAAGGAAAGGTCATGGTGGCTATGGAAGTCTTCTATCTTAGCTCCAG
TGCAGCCCTCTTGGCTCATATTTGCTCCTAAGTGTACATTATCTTGTTTAGACCAGACAGGAATTCA
TTTCATCATATCAGGGACAAAACACATTTCCAAAGGAATACGTCTCTTAAATTT

ACGCGTACGCGGCCGCTCGAG - GFP Tag - GTTTAA

Protein Sequence:

>MG214469 representing NM_001104572

Red=Cloning site Green=Tags(s)

MFYCIFISCFLHISKVVSEAMTVNISLCFYKTPEEFHHEGDVVIGAFFPIHTYYSPNKVPHPSVPYKYMD
NYLQYNFKNYQYILALVFAIEEINENPNLLPNISLGFDFYNVRFTEKETLMNVCFWLTGQGQKKILPNYN
CAKNNFTTALTGTSWTTSAQIGTLLQLFKFPQLSFGPYDPIILSDRGQYSSLYQMAPKYSSISRGIVSLMV
HFRWSWVGLILPDDHKGYIILSELREDMERKGVCI AFVKMILLTLTSYYNKFWENMDKTNVII IYGDVDS
LTGLMRNIGQRLLTAKVWVMNIEPHITDYADYFMFDSFHGSLIFTHKYRESFDL TTFIQTVNPKYPEDI
YLPKLWHLFFKCSFSDIDCLLLANCQSNASLDVLP SHILDMTISEESNNIYNAVYAVASHLHQMSLQQVQ
KQPHENGEAMAFFPWQLNIFLKDINERGNISLDWRHKLNGEYDILNLWNL PKGLGQKVKIGSF SANAP EG
QQLSLSEHMIQWAGGFSEIPQSVCSSESCRPGFRKVILEGKAICCYNCTPCADNEISNETDQVQKCPES
HYANTEKNHCFQKTVSFLAYEPLGITLASITLCL SALTAFVIGVFVKYRDTPIVKANNRGLSYTLLITI
TFCLLCSLNFIGQPNTASCILQQNIFGVAFTVALATVLAKAITVVI AFKATFPGRMVRWLMTSRAPNYII
PICTLIQLLLLCGIWMATSPPFIDQDVHAHQIILLFCNKGSSVAFHCVLGYLCSLALGGYTMAFLSRNLP
DTFNESKFLSF SMLVFFCVVWTF LPPVYHSTKGKVMVAMEVFSILASSAALLGFIFAPKCYIILFRPDRNS
FHHIRDKTHSQRNTSLKI

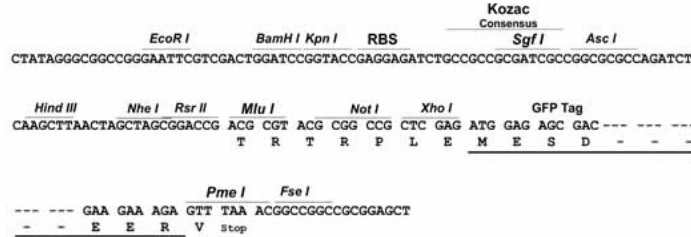
TRTRPLE - GFP Tag - V

Restriction Sites:

Sgfl-MluI

Cloning Scheme:

Cloning sites used for ORF Shutting:



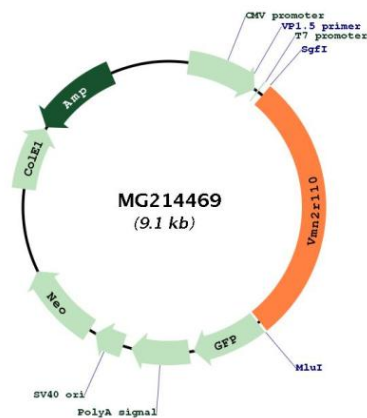
ACCN: NM_001104572

ORF Size: 2574 bp

OTI Disclaimer: The molecular sequence of this clone aligns with the gene accession number as a point of reference only. However, individual transcript sequences of the same gene can differ through naturally occurring variations (e.g. polymorphisms), each with its own valid existence. This clone is substantially in agreement with the reference, but a complete review of all prevailing variants is recommended prior to use. [More info](#)

OTI Annotation: This clone was engineered to express the complete ORF with an expression tag. Expression varies depending on the nature of the gene.

Components:	The ORF clone is ion-exchange column purified and shipped in a 2D barcoded Matrix tube containing 10ug of transfection-ready, dried plasmid DNA (reconstitute with 100 ul of water).
Reconstitution Method:	<ol style="list-style-type: none">1. Centrifuge at 5,000xg for 5min.2. Carefully open the tube and add 100ul of sterile water to dissolve the DNA.3. Close the tube and incubate for 10 minutes at room temperature.4. Briefly vortex the tube and then do a quick spin (less than 5000xg) to concentrate the liquid at the bottom.5. Store the suspended plasmid at -20°C. The DNA is stable for at least one year from date of shipping when stored at -20°C.
Note:	Plasmids are not sterile. For experiments where strict sterility is required, filtration with 0.22um filter is required.
RefSeq:	NM_001104572.1 , NP_001098042.1
RefSeq Size:	2577 bp
RefSeq ORF:	2577 bp
Locus ID:	224582
Cytogenetics:	17 A3.2

Product images:

Circular map for MG214469