

Product datasheet for **MG214455**

Gm1322 (NM_001033477) Mouse Tagged ORF Clone

Product data:

Product Type: Expression Plasmids
Tag: TurboGFP
Symbol: Gm1322
Mammalian Cell Selection: Neomycin
Vector: pCMV6-AC-GFP (PS100010)
E. coli Selection: Ampicillin (100 ug/mL)

ORF Nucleotide Sequence: >MG214455 representing NM_001033477
Red=Cloning site Blue=ORF Green=Tags(s)

TTTTGTAATACGACTCACTATAGGGCGGCCGGAATTCGTCGACTGGATCCGGTACCGAGGAGATCTGCC
GCC**CGATCGCC**

ATGGCGGACAATCTGGAGCCATCTACCTTCCCCATACAGAAGGGGTCAGTGCCTGAGGCAGAAAT
GGGAATCTAGTGACTATCACAGAAATGAGAGCTATCCTGGAGGCAGCCGGTCAAGCTTCCAGCTTAA
GGAAAGCAACTTGCTTGAACCTGAAGGAGAGGCACTTCAACACTTGACCCTCCAGAGGCACCAAGTCTG
CCTTGCTGCAAAAAGGAAGAGGTATTGTGTGGAGAGCCTGAAGATGGAGTTCCTGAGGACCAGAATGACA
AACTCAAAGACTGTGGACAGCCTGAAGTACTGAAGGAGGATCCCTGACTGGCCGGCGCAGGATTGAACG
CTTTCCATTGCCCTAGATGAGCTGAGAAGTATATTTGAGTCTCCAAGAGTAGCATAACTCAGCTGGA
CCAGTTGAATATGTCCAAAAGGTAAGAAGCTATTTATTTTCAGGATTACAGC

ACGCGTACGCGGCCGCTCGAG - GFP Tag - GTTAA

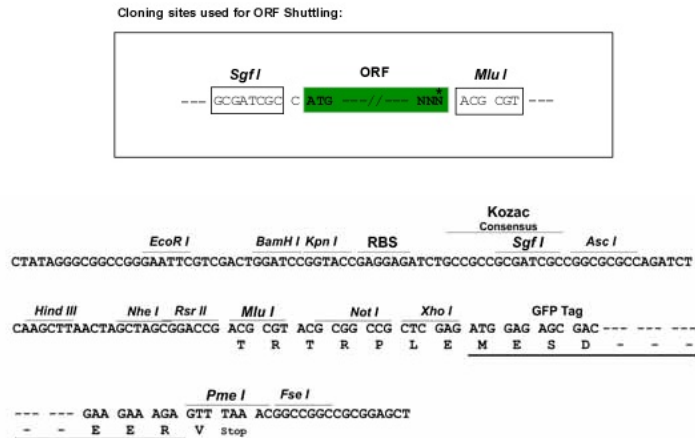
Protein Sequence: >MG214455 representing NM_001033477
Red=Cloning site Green=Tags(s)

MADNLEPSTFPIQKGSLSRLRQKWESSDYHRNESYPGGSRCKLFQLKESNLLEPEGEALSTLDPPEAPSL
PCKKKEEVLCEPEDGVPEDQNDKLDKCGQPEVLKEDSLTGRRRRIERFSIALDELRSIFESPKSSINSAG
PVEYVQKVRSYLFQDYS

TRTRPLE - GFP Tag - V

Restriction Sites: SgfI-MluI



Cloning Scheme:


ACCN: NM_001033477

ORF Size: 471 bp

OTI Disclaimer: The molecular sequence of this clone aligns with the gene accession number as a point of reference only. However, individual transcript sequences of the same gene can differ through naturally occurring variations (e.g. polymorphisms), each with its own valid existence. This clone is substantially in agreement with the reference, but a complete review of all prevailing variants is recommended prior to use. [More info](#)

OTI Annotation: This clone was engineered to express the complete ORF with an expression tag. Expression varies depending on the nature of the gene.

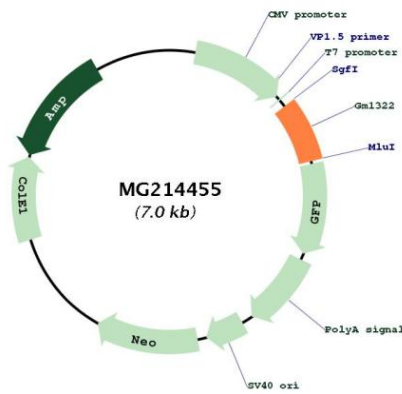
Components: The ORF clone is ion-exchange column purified and shipped in a 2D barcoded Matrix tube containing 10ug of transfection-ready, dried plasmid DNA (reconstitute with 100 ul of water).

- Reconstitution Method:**
1. Centrifuge at 5,000xg for 5min.
 2. Carefully open the tube and add 100ul of sterile water to dissolve the DNA.
 3. Close the tube and incubate for 10 minutes at room temperature.
 4. Briefly vortex the tube and then do a quick spin (less than 5000xg) to concentrate the liquid at the bottom.
 5. Store the suspended plasmid at -20°C. The DNA is stable for at least one year from date of shipping when stored at -20°C.

Note: Plasmids are not sterile. For experiments where strict sterility is required, filtration with 0.22um filter is required.

RefSeq:	<u>NM_001033477.3, NP_001028649.2</u>
RefSeq Size:	1966 bp
RefSeq ORF:	474 bp
Locus ID:	383709
Cytogenetics:	2 C1.3

Product images:



Circular map for MG214455