

Product datasheet for **MG214431**

Fam186b (NM_001081254) Mouse Tagged ORF Clone

Product data:

Product Type:	Expression Plasmids
Tag:	TurboGFP
Symbol:	Fam186b
Synonyms:	EG545136
Mammalian Cell Selection:	Neomycin
Vector:	pCMV6-AC-GFP (PS100010)
E. coli Selection:	Ampicillin (100 ug/mL)



ORF Nucleotide Sequence: >MG214431 representing NM_001081254
Red=Cloning site Blue=ORF Green=Tags(s)

TTTTGTAATACGACTACTATAGGGCGCCGGGAATTCGTGACTGGATCCGGTACCGAGGAGATCTGCC
GCC**CGATCGCC**

ATGGAGAAGGACAACCCCCACACTGGTGACTCCACATCAGTGAAGGCTATTATCTCAAAGATTGAGA
CTGCCAGCTAATTCGGACTCAGGAGGATATTTCCACCCAGCTCTCGGACATCTGGACAATGTCAACTG
TGCCATCAACCGCTTCCAGGAAGAACTGGGATATGACTTAAAAGAAAGAGCGAAGCCTCACCAACAGAG
CAGAAAGGCAAGAAGAGGTTTCTTGTGCTGGAGAACTCGCCGCCTTCTCTGATGACGCCAAGGCCAAGG
AGAAGCACCTGTATGAGATCCTCCACTGGCTGGCGAATGGGTGACAGTCTGACTTATGAGATAAAGGA
CAGGAGTTCGGAGGAAGACGAAGCCCTAGACGAATGGATCGAAGTATGGAGAAGGTTGGCTCTTTCC
CTCATGGCCACCAAGGAGGCATCGAGTCTCTCATCTCTGTGCTCGACTCTCATCGAAGACCAGAAGA
AAATGACACAAAGGTACAACATAACTTCTGGCAGGACTGGCATGAGAAGAGCCACAGAATAAGGAGCA
GGGAATCCCTGTGCCACCGAGCCGGAGCAGATGCTCCAGGACAAGAACCAGCCACCTGAACGTCTCG
GAGGTCAAGTCCATGCTACAGGAGCTCCTGGACTCCACGATGTTCAACAAGGGGAGGTTAAAGCCATCA
GGTACATGTCCGCGTGGTGGAGAACCTCAACAAGGCCTTGACCCTCCAGCACAAGGAGAACAAGAGTCT
GGAGACAAAGTACAAGTACCTCGAGGTGGAAAAGAACAAGAGCTCAGCACCCAGAGGCTGCACTTCCAA
AAATCCATCCAAGTCTGGAGAGCAAAAGGGACGCGCTGCTGAAACAGGTAAAGATTCTAGGGGACAAAT
ACCATCACCTCCTCATGTTAAAGCACACCCTGGAGTTCAGCTGAATATAGCCACGCTGCTAGTGGTCC
AGAAGAACCACCAAGCATTTCATTACCTGGAACCCCTGAAAAAGAGCCCTTCCAGGGCAGGGT
ACAGCCCTGGAGAAGGAGAAGCAGGAGCCCAAGGAGAAGGACAGGCAGTTCAGTCTCTTTTCAAGTC
CCCTGACCAAGGCCTGGCACAGTGGCACTACACCTGCAGCCCAAAGCCAAATCTTCGGCACGGACACGGA
TTTCGAGGGTGGAGGATGTGTTGTTGACCCGACAGAGGCCCTGGAGCCTGTGCTGCTGCACTCAGAGGT
CCCCAGATTCACACAATGGGAGAACTAGGGGACATGAAAGACAAGACCAGGGGGATCATATCCAAG
AGGAGGGAGCCAAAGCAAGTCCCTGTCCCGAGGAGCATCAGGAGGAGGCTTCTGGAGAGCCACATGGG
GCACTGGGAGGAAGAGTCAACTGGGAGACCAGAAGGCAGCAATGGCTGCAGGAGGAAGAGATGTGGCTT
CAGCGGCAGAAGAAGTGGGCCCTGCTGGAGCAGGAGCACCCAGGAAAAGGTGAGGCACTGGGAGGCAGAGG
CGGCTGCCAGGCAGTGGCAGAGGCTCACCCAGCCAGAGGAGGAGAAGCCAGCCAGCCAGGAAGGAGCA
GAAGGCAAGCTCGGAGATGATCTTACCACCACAGTCCGGTGAAGAGCCTGAAGAAGTCCGAGTCCACG
CCGACGCCCACTGCAGGGCCAGTCCGCGCATCAGAGCAGTCTGACATACTCGCATCCCCACACACC
AGCAGCCTGGGCAGGGGACCCAGAGACCCTGGGTTGAGCTGAGTTTCTGCAAAGGCCACCGACCCGCCA
GGTTTCTGCGAAGCCAAAGAAATCCACCTCCTTGCCAGTCACTGGGACGTCATCCTCCGAAGGGTGTCC
CAGGTCTCTGACGAAGCCCGGGGACACCTAAGGACAAGGTCTACCACATAGACATGGAGGCCACG
TGAAGAACCTGCAGTCTGGCGGTTTCGGAGTCAAGGTGGCACTGCCACAGTACCTGCGCAGCAAAGC
CCTGGAGGTCAATGCCATCGCCATGGACCTGAGCATTCTCCGGCTGCAGTACCTATGCAAGAAGTATATC
CAATACAGGCGCTTCCAGAGCCTCCGACTAGAAATGATCAAACACATAGGAGCCATTCGACAAAACAAG
TTACCAGTAAGGCCAGAACCTCTATCTGTTCTGGAGAACATTGACCACCAGCAGAGCCTCAGGCTGCA
GGCCTGGGCAGACAAGCAGAGAGACCTGGAGGAAAGGCCAGGAATGCCTGCACACCATGTTGGCCATG
TTCCCTAAGTCCAGCAAGAGTGGAACTCCACCTGAGCGTCCCGTGTCTACCCATGTGAAGCCAGTGA
AGAGCAAGTCACTTCACTTCTGCTTCCAGAGAGTCCGCTCCAGCCACTCCACCACCAAGCACCGTCTCC
ACCTAAGCCCCGGAGTCTGTGCCCTGCCGATAACTGGCCAACAAGGGAGCCAGATGGAAGCCATATGG
AAGGCTGATGTGGCCTCTTCGAGTCAACCCATAGAAAAGAAGACCCTACAAACATGTGCTGGGAACAAC
TAGGGGCTACCCAGACATCCCAGGTTACTGGTGGTGGACGAGCATCCCTCCTGCCAGAAAGCTCGGT
GTCCTTCAAGGCTCGCTTTTCACTGCTTCTCGTCCAAAGGAAGGAAGGCCAGGAACCCTCAGAGGAG
CTAGCTGGGCTGTCTGCAAAATGTCCAGCCAGTCACTACCCGGATCGATCTGTACAAAGCAGGAAGGAT
CGGGCAGCTCCAGTACCACTCCATCCCT

ACCGTACGCGGCCGCTCGAG - GFP Tag - GTTTAA

Protein Sequence:

>MG214431 representing NM_001081254

Red=Cloning site Green=Tags(s)

MEKDNPPHLVPTPSVKAIISKIETAQLIRTQEDISTQLSDILDNVNCAINRFQEELGYDLKERAKPHQPE
 QKGGKRFILLEKLAASFDDAKAKEKHLYEILHWLGEWGDLSLTYEIKDRSSEDEALDEWIEVMEKVLPLS
 LMATKGGIESLISLCSTLIEDQKMTQRYKHNFWDWHEKSPQNKQEGIPVPPSPEQMLQDKNTAHLNVS
 EVRSMQLQELLDSTMFNKGVEKAIQYMSAVVENLNKALTLQHKENKSLKTYKYLQVEKNKELSTQRLHFQ
 KSIQVLESKRDALLKQVKILGDKYHLLMLKHTLEFQLNIAQPASGPPEPTKHFHYLEPPEKEPLPGQG
 TALEKEKQEPKEKQAVSALFSSPLTKAWHSGTTPAAPKPIFGTDTDSRVRDVFVDRTEALEPVLHSEV
 PQIPTQWEKLGDMKDKDQGDHIQEEGAQSKSLSPGSIARRLLESHMGHWEEELNWETRRQQWLQEEEMWL
 QRQKQWALLEQEHQEKVRQWEAEAAARQQWRLTQPEEEKPSRKEQKASSEMIFTTTSRWKSLKSEST
 PTPHCRAQSAHQSRSYILASPHQQPGQGTQRTLGSAEFLQRPPTQVSAKPKKSTSLPVTGTSILRRVS
 QVSLQQAPGTPKDKVYHIDMEAQLKNLQVLGGSESEVALPQYLRSKALEVIAIAMDLILRLQYLCKKYI
 QYRRFQSLRLEMIKHIGAIRQTRVTSKAQNLVLFLENIDHQSLRLQAWADKQRDLEERHQECLHTMVAM
 FPKLQEQEWNVHLSVPVLTHVKPVKSKSSSVLLQVRSSHSTTKHRPPKPRESVPLITGQQGSQMEAIW
 KADVASSSHPIEKKTPTNMCWEQLGGYPDIPRLLVVEHPSCPRSSVSFKARSFASSVQRKEGQEPSEE
 LAGPVCKMSSQSLPGSICTKQEGSGSSSTHSIP

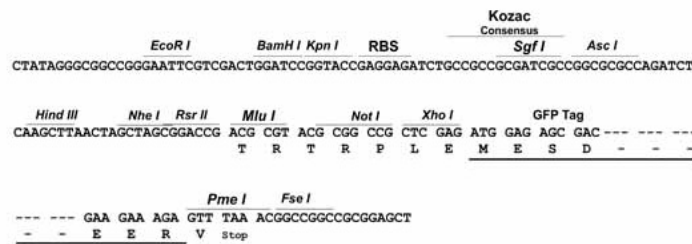
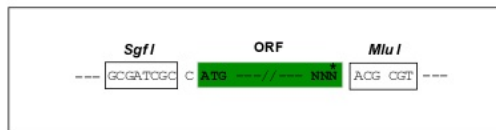
TRTRPLE - GFP Tag - V

Restriction Sites:

Sgfl-MluI

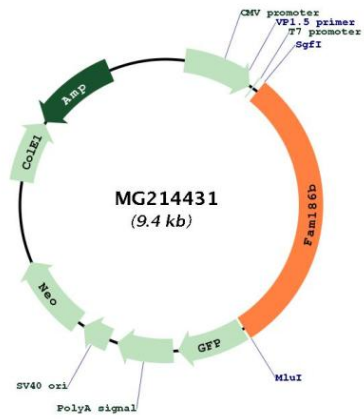
Cloning Scheme:

Cloning sites used for ORF Shuttling:



ACCN:	NM_001081254
ORF Size:	2829 bp
OTI Disclaimer:	The molecular sequence of this clone aligns with the gene accession number as a point of reference only. However, individual transcript sequences of the same gene can differ through naturally occurring variations (e.g. polymorphisms), each with its own valid existence. This clone is substantially in agreement with the reference, but a complete review of all prevailing variants is recommended prior to use. More info
OTI Annotation:	This clone was engineered to express the complete ORF with an expression tag. Expression varies depending on the nature of the gene.
Components:	The ORF clone is ion-exchange column purified and shipped in a 2D barcoded Matrix tube containing 10ug of transfection-ready, dried plasmid DNA (reconstitute with 100 ul of water).
Reconstitution Method:	<ol style="list-style-type: none">1. Centrifuge at 5,000xg for 5min.2. Carefully open the tube and add 100ul of sterile water to dissolve the DNA.3. Close the tube and incubate for 10 minutes at room temperature.4. Briefly vortex the tube and then do a quick spin (less than 5000xg) to concentrate the liquid at the bottom.5. Store the suspended plasmid at -20°C. The DNA is stable for at least one year from date of shipping when stored at -20°C.
Note:	Plasmids are not sterile. For experiments where strict sterility is required, filtration with 0.22um filter is required.
RefSeq:	NM_001081254.1 , NP_001074723.1
RefSeq Size:	3187 bp
RefSeq ORF:	2832 bp
Locus ID:	545136
Cytogenetics:	15 F1

Product images:



Circular map for MG214431