

## Product datasheet for **MG214429**

### **Olf1423 (NM\_146680) Mouse Tagged ORF Clone**

#### Product data:

Product Type:	Expression Plasmids
Tag:	TurboGFP
Symbol:	Olf1423
Synonyms:	MOR239-3
Mammalian Cell	Neomycin
Selection:	
Vector:	pCMV6-AC-GFP (PS100010)
E. coli Selection:	Ampicillin (100 ug/mL)

**ORF Nucleotide Sequence:** >MG214429 representing NM\_146680  
Red=Cloning site Blue=ORF Green=Tags(s)

TTTTGTAATACGACTCACTATAGGGCGCCGGGAATTCGTCGACTGGATCCGGTACCGAGGAGATCTGCC  
GCC**GCGATCGCC**

ATGGAGCTGAGAAATGACACCAGAGTAAAAGAATTTATATTTCTGGGTCTCACTCAGTCACAACACCTGA  
GCCTGGTCTTATGTCTTGTGTTTTGTGTACGTGACAACTCTGCTGGGAATCTGCTTATCATGAT  
TATCGTGACCTTTGAGTCCCGTCTGCACACGCCATGACTTCCTGCTCCGAAACCTTGCCGTTCTAGAC  
ATCTGCTTCTCCTCCATCACAGCCCCAAAGGTCTTGGTGGACCTTCTGGCAAAGAAAAAGACCATTTCCT  
ACGCAAAATGCATGACACAGATGTTTTCTTCCATCTGCTTGGTGGAGCAGACATTTTTCTCTCTCTGT  
GATGGCATTGATCGATACATGGCCATCTCCAAGCCCCTGCACTATGTGACCATCATGAGTAGTAAGCGG  
TGCACAGCCCTCATCGCGCCCTCCTGGGTGGCGGCTTGTCCACTCGATTGTGCAGATCTCCCTCTTGC  
TCCACTCCCCTTCTGTGGACCAATGTTCTTGATACCTTCTACTGCGATGCCACAGGTTCTCAAACCT  
TGCTGCACAGACACCTTTGTTCTTGAGCTCCTGATGATCTCAAACAATGGCCTGGTCACTACCCTATGG  
TTTATCTTCTTCTGGTGTCTACATGGTCATCTTGATGATGTTGAGGTCTCAGGCAGGAGAAGACAGAA  
GAAAAGCCATCTCCACCTGCACCTCCACATCACTGTGGTCACCCTGCATTTTGTACCCTGCATCTATGT  
CTACGCCAGACCATTCACTGCCCTCCCCACAGATAAAGCCATCTGTGCACCTCACAGTCATCTCTCCT  
CTGTTGAACCCCTTGATCTATACTTAAGGAACCAGGAAATGAAGTCAGCCATAAGAAGACTAAAGAGAA  
AACTACTCTCTTGAAGAAG

**ACCGT**ACGCGGCCGCTCGAG - GFP Tag - GTTTAA



**Protein Sequence:** >MG214429 representing NM\_146680  
Red=Cloning site Green=Tags(s)

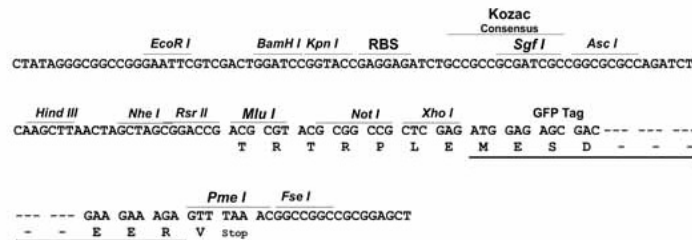
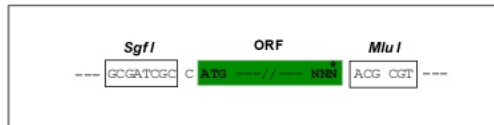
MELRNDTRVKEFIFLGLTQSQHLSLVLCVLFCFVYVTTLLGNLLIMIIVTFESRLHTPMYFLLRNLAVLD  
 ICFSSITAPKVLVDLLAKKKTISYAKCMTQMFFHLLGGADIFSLSVMAFDRYMAISKPLHYVTIMSSKR  
 CTALIAASWVGGFVHSIVQISLLLPLFCGPNVLDTFYCDVPQVLKLACTDTFVLELLMISNGLVTTLL  
 FIFLLVSYMVILMLRSQAGEDRRKAISTCTSHITVVTLHFVPCIYVYARPFPTALPTDKAISVTFVISP  
 LLNPLIYTLRNQEMKSAIRRLKRKLTPLEK

TRTRPLE - GFP Tag - V

**Restriction Sites:** SgfI-MluI

**Cloning Scheme:**

Cloning sites used for ORF Shutting:



**ACCN:** NM\_146680

**ORF Size:** 930 bp

**OTI Disclaimer:** The molecular sequence of this clone aligns with the gene accession number as a point of reference only. However, individual transcript sequences of the same gene can differ through naturally occurring variations (e.g. polymorphisms), each with its own valid existence. This clone is substantially in agreement with the reference, but a complete review of all prevailing variants is recommended prior to use. [More info](#)

**OTI Annotation:** This clone was engineered to express the complete ORF with an expression tag. Expression varies depending on the nature of the gene.

**Components:** The ORF clone is ion-exchange column purified and shipped in a 2D barcoded Matrix tube containing 10ug of transfection-ready, dried plasmid DNA (reconstitute with 100 ul of water).

- Reconstitution Method:**
1. Centrifuge at 5,000xg for 5min.
  2. Carefully open the tube and add 100ul of sterile water to dissolve the DNA.
  3. Close the tube and incubate for 10 minutes at room temperature.
  4. Briefly vortex the tube and then do a quick spin (less than 5000xg) to concentrate the liquid at the bottom.
  5. Store the suspended plasmid at -20°C. The DNA is stable for at least one year from date of shipping when stored at -20°C.

**Note:** Plasmids are not sterile. For experiments where strict sterility is required, filtration with 0.22um filter is required.

**RefSeq:** [NM\\_146680.1](#), [NP\\_666891.1](#)

**RefSeq Size:** 933 bp

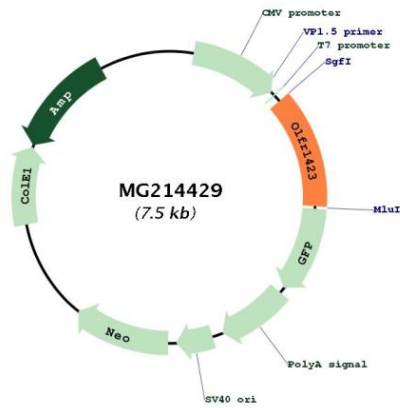
**RefSeq ORF:** 933 bp

**Locus ID:** 258675

**Cytogenetics:** 19 A

**Gene Summary:** Olfactory receptors interact with odorant molecules in the nose, to initiate a neuronal response that triggers the perception of a smell. The olfactory receptor proteins are members of a large family of G-protein-coupled receptors (GPCR) arising from single coding-exon genes. Olfactory receptors share a 7-transmembrane domain structure with many neurotransmitter and hormone receptors and are responsible for the recognition and G protein-mediated transduction of odorant signals. The olfactory receptor gene family is the largest in the genome. The nomenclature assigned to the olfactory receptor genes and proteins for this organism is independent of other organisms. [provided by RefSeq, Jul 2008]

Product images:



Circular map for MG214429