

Product datasheet for **MG214417**

9530053A07Rik (NM_001164655) Mouse Tagged ORF Clone

Product data:

Product Type:	Expression Plasmids
Tag:	TurboGFP
Symbol:	9530053A07Rik
Synonyms:	FCGBP
Mammalian Cell Selection:	Neomycin
Vector:	pCMV6-AC-GFP (PS100010)
E. coli Selection:	Ampicillin (100 ug/mL)

ORF Nucleotide Sequence: >MG214417 representing NM_001164655
Red=Cloning site Blue=ORF Green=Tags(s)

TTTTGTAATACGACTACTATAGGGCGCCGGGAATTCGTGACTGGATCCGGTACCGAGGAGATCTGCC
GCCGCGATCGCC

ATGGGATCCCTGTGGAGCTGTTGGCACTCTGGGCTGGAGCAACCCCTCCTATGGGCTCTGCTCACCCAG
CAGAGGCATCTGCCAAGGCATTTCAGTGTGCACCTGGGCGAGCTGCCAGATGGTGGTGGGAAGGCTAA
GTGTTTGGCAGAGTCCACAGCTGTCTGCCGTGCCAGGGTATCCCACTATACACCTTCGATGGCCAT
CGCATGACATGATGGGCACCTGCACCTACACCATGGCTGAGCTGCGCAGCAGCAAGGACTCCCTGCTGG
CCTTTAAAGTAGACGCCAAGAATGAGCACCGGAGCTCCAACAAAGTCTCCTACGTGCGCTTAGTCACTGT
GCATGCCTACAACCACACCGTGTCCCTGATCTATGGAGAAGTTGGCCTTGCGAAGATCGACTACCACTAC
TCAAGCCTGCCGTCTCCCTGAGTGAGGGTCTCTTGCCTGTGCACCAGAGTGGAACACGAGGTGTGCTAG
AACTGGACTTTGGGCTGGTGGTACCTATGACTGGGATGGCCAGCTGACCCTGAGCCTGCCAAGCGCTT
CCAAGACCAGGTGTCTGGGCTGTGCGGCAACTATAATGGAGACCCTGCAGATGACTTCTCACGCTGAT
GGGAAGCAAGCTCCTGATGTTCTAAATTTACCAAAAAGCTGGAAGGTGAATGATCAAGACCTCTTATGTG
ATGATGGCTGTTATGGCAACTGTCCGTCTTGATCCCAAGCCAGGCCAGCTCTTTAAGAAAGACCTTTT
CTGTGGCATGCTAACTTGCCCTCAGGCCATTTGCTGACTGTCATCAATTTCTGGACCCCAAGCCTTTT
CTGGAAGAATGTGTATGACATGTGCGTGACGGGAGGGGAACGTCTCACCTGTGCGGTGGCCTCAATG
CCTATGCACAAGCCTGTGTGGACCTGGGCATCTCTGTCCGCAATGGAGGTCACGAACCAACTGCCCCCT
GACCTGTCCAGCCAACAGCCACTATGAGCTCTGCAGCCCTGCCTGCCACCCCTCTGCAACTCAGAAGCC
AGACCGACCAACTGCTCTCGCGCCCTTGGTGGAGGGCTGCGTGTGCTTCCAGGCTTCGTGGCCAGTC
GTGGCCTTTGCATGCCTGTCTCATCTGTGGTGCATCTTCCAGGACCGCTGCTGGCCCAAGTCAAGA
AGTGTACCGGACGAAAAATGCCACCTCCGCTGCACCTGTGATGGACCACTCAGAAGGTGATCTGTAGG
AACACAACAGGGTGTCTGCCTAAGGAGCACTGTGGGTACAGAATGGCTCCTTTGGTTGCTCCCGGAAT
ACTTCCGCATCTGCCGGCATCCGGAGCCACACTACATGAGTTTAGATGAGCGGATCTTCAATTTTCAT
GGGTAACCTGCACATACTTGTACTGCTCCTGTGGCCAGCACCATCTCTCCCGACTTCAAAGTGTTT
ATAGAAAATGAACGCCGTGGAAGTCAAAGCGTAAGCTTTGTGCGTCTGTGAAGTTGGAGGCCTTAGGAA



TCAAGTTGGAGGTGCGCCGGGAATACCAAGGCAAAGTCTGGTGGATGGCATCCTTCACTACCTGCCCTT
TCAAGCCCTAGGTGGGAAGCTCGTAGTGTCCGCCAAGGCAAGTACGCCATCTACGCACGAACTTCAGC
CTGTCTGTCACTATAACTGGGACACCCATGTGACTGCCAAGGTGCCAGCAACTATTTAACAGTGTGT
GTGGGCTCTGTGGGAATTCAACGGGGACCCACGTGATGACTTGGGTAACACAGATTAGAGCAGAAGCCAT
TGACCCTCGAGACTTTGAAAAGAAGTGGCTGGTATCATCACATCTCGGCTGCAGGACAGACGAGCAACAT
CTGTGTCTGACTTCAACAAAGGATTAGTGTCAAATAAACACAAAAGTGCAGAATATTTACTAACATAT
CAGGTCAATTAAGCAGTGTGGAGAGTGCCTGCCTACAACAGTGCCTACATAGAGTGCCTATGATTG
CTGCCGTATGCCAGGCCAACTAAGCCACTGTGTGACACACTGGCCACATACACCGCCATATGCCAATCT
TCTGGAGTCATTGTGTATCCATGGAGGACTGAGACACTTTGCCAATGACCTGCCACCTCACAGCCACT
ATGAGCTGTGTGAGCGAGGCTGTCCATTGACCTGTGGAGACAGCCAGTGCAGGAGGCTGTGGCTCAGA
TTGCTACGAGAGCTGTGTCTGTGATGAGGCTATGTCTTAGCGGTGAGGCTGTGTACCCCTGGCCTCC
TGTGGTTGCGTATACCAGGGCATTACCATGGCCAGGTGATGAGTTCTATCCTGGCCCTGAATGTAAC
CCCTCTGCCACTGTGATAAGGGTGGCTGGTGTCTTGTCAACCCTCACACTGCAGCCACATGAAGTCTG
TAAAGTGTGGATGGCATCCTGAGATGTGTGGTGGGCTCTGCCACCTGTCAGGTATCAGGGCTTCA
CATTACACTACCTTTGATGGCCGCCATTTGACTTCATGGGCACCTGTGTGACGTGTGGCCAGACCT
GCTGGACCCGACCTGGCCTGAAACCATTCACAATACTGCAGGAAAACGCAGTCCAGGGCAACAAGCAAGT
CAGTGTGACCAAGAAGATCACCATCGAGGTAGCCAACTACACCCTGCAGCTGGAGCAGAATCAGTGAAG
GTCAAGGTGAACGGTGTGGACATGAAGTGCCTGTGTGTGGATGAGGATAGAGTTACGGCCTCCGGC
ATGGCACAGATATGGTAATCGAGACCAAATTTGGCCTGCTCGTGTCTACGATCTCAAATACAGCTGGC
TGTCAAGGTTCCCAACTACTATAAACACATGTGTGGCCTGTGTGGGACTACAATGATGACCCCAAG
AATGACTTCCAGAAGTCCGATGGCTCACAGGCAGCCAGTTCCAATGAGCTGGGAGACTCCTGGAAAAAG
CTGTGCCAGGTTCTTCTGCACACCCGGCCTTCTGCAAACCGGGACAGGCTTGCAGCCGAAAGTGCTA
CCCAACTCTGGAGAAGAAGTACCGCGGAAAGAGTTCTGTGGGCTGATCACCAGCCACAGGGCCACTG
GCTGCCTGCCACAACTGTTGGACCCAGGGTCCCTTGCAAAGCTGTGTCTTTGACCTCTGCCTGGGTG
GTGGGAACCAGAGCATTCTCTGCAGCAGCATCCATGCCTACGTGAGCGCCTGCCAGGCGGCTGGGGGC
TGTCAGCCATGGAGAAACCAGACTTTCTGTCCAATGGAGTGCCTCCCTCACAGCCACTATGAGGTCTGC
GCAGACACTTGCTCCCTGGACTGCTCAGCAATCACCCTCCTATGCAGTGCCTGACGCCATGTTGAGGG
GCTGTGAATGTGACACTGACTTCTCTGCAGAGTATCACAACCTGTGTGCCATGGAGAAATGTGGCTGCCA
CTACAACGGAGTCTACTATGAGCCAGAGGAGTCAAGTCTCATTGAAAAGTGCAGCAACATTGTGTGTGC
CAACCAGGCAAGGCATGATGTGCCAGGATCACAGCTGCAAACCGAGACAGGTGTGCGAGCCCTCAGGAG
GCGTCTGACCTGCGTACCAAAGACCCATGCCAAGGTGTTACCTGTGGTGCAGGAAACATGCACAGA
GAAAGATGGCAAGGGTGTATGCAGAGCCAACTATGAGTCCAAGTGTGGGTGTGGGAGACCCCTCACTAC
CATTCTTTGATGGCCTGAACACTAATTTCCACGGGACCTGCAGTTACCTGATGGCAGGAACTGGCTGCC
CTGGCACTGGTGTGAGGGGTTGACCCCTTCAAGTGTGATTACCAAGCATGAGAGCCAGAGCGACCCCTAA
GGTGTCTACGTGAGGAAGGTCAAGGTTGAAAACCTACAACACCAGCATCACCATCCAGGAGAAAAGTCA
GGCAGAGTTCAAGTGAATGGAGTTTTCATGGCCTTGCCTGTGTACTTGGCTGGTGGGCGGATTTCAAGTGA
TTAATGGAGGCTCAAAGGCTGTGCTGGAGACTAACTTTGGGCTTCAAGTCACTACAACCTGGAAGTGGAG
GGTACACGTCACTGCCAGCAGTACTATGGTGCAGTGTGTGGGCTCTGTGGGAACATGGACAAAAAC
CCCCAAATGACCAAGTCTTCCCTAATGGCACAATGGCACCCTCAATACCTACCTGGGTGGCAGCTGGC
AAGTTCAGGGTGGGACCCCTTTGTTGGAATGAATGTGAGGGTCTGTCCACATGCCAGAGGACAG
AGTGGAGGAGTATAGGGTCTGGCTTCTGTGGACCTCTGGACCAGACACAGTGGGTCCCTTTACCAGC
TGCCATGCCCATGTGCCTCTGAAAGCTTCTTTGAGGGCTGTGTGCTGGACGTCTGCCTGGGTGGTCAAG
TCAAAGACATACTATGCCAGGCACTGGTACTATGCTGTGCCTGTCAAGTGTGGCATCAAAATCACTGGT
GGTACTGAGGACTCAGCCGGTTGTGAGATCACCTGCCCTGTCAACAGCCACTACGAGCTCTGTGGCCCA
CCCTGCCAGCCAGCTGCCACCCCTGCACGACACACAGCCCAACTGCATGTGATGGCCCTGTGTGG
AGGGATGCCAGTGTGACAAGGGCTTCTGCTGAGTGTGATCAGTGTGTTCCCTGGATGGTGGCTGTGG
CTGCTGGGTCAATGGCACATACTATGAAGCAGGCACTGAGTTTGGGCTGATACCCTGCTCTAAGAGG
TGTCACTGTGGACCTGGAGGTGACTCCTTGGTCTGCAAGCCTGCCAGCTGTGGGCTGGGTGAGGAGTGTG
CCTTGTGGCTCTGGAGAGATCGGCTGCCAACCTATAAGCATAGCTGAATGTCAAATACTGGGTGATCC
CACATACATACCCTAGATGGGACCCGTTTACTTCCAAGGCACCTGCAGTACCTGCTGAGTGCACCC
TGCCATGCACCACCACAGGACTGAATACTTCAATGTCACCGTGGTTAATGAGCATAGGTGCAGCCAGG
CTGTCAAGTACACACGAAAGTATCACTGTGCGAATCTATGGCCTCAGCTTGAACCTCAGTGGCCACTGGCC
CAAGAACCTACTGGTGGATGGAGAGATGGTCAAGCTGCCGTTCCAGCTGCAATCAGGCTCCTTGTTCAC
CTAAGTGGCATGGGCTTGGTGTACACACCTCCTGGGGCTCTCCCTGACTTTTGTGGAACAGTTTCA
TGCCCTGCGCGTCCCGCAGCCTATGCTGGCACCCTCTGTGGCTGTGGCCAACTACAACAAGATCC
CAACGATGACTGACTGCAGTGGGCGGAAACCTGAGGGCTGGAAAGTGGGCGGATTTCCAGACTGTGAC

CAATGCCAGCTTAGGACTTGCCAAAAACCTGTACACCTGAGGAACGGAAACGTTTTGGTGGCCCAATG
CCTGCGGCATTATCACGGCCCCGAAGGCCACTAGCGCCCTGCCACAGCTTTGTGCCACCCACGCAGTA
CTTCGAGGCTTGCTTGCTGGACACCTGTGAGGTTGAGGACATTGAGGAGCCTCTGCTCTGATAGCC
ACCTATGTGGCAGCATGTGAGGATGCCAGGGTCCGACTTAGAGAATGGAGAAAAGCCAGACTTCTGTCCCC
TCCAGTGCCCTGCCACAGCCACTACCAGCTCTGTGGTACTCCTGCCCTGTGAGTTGCCCGAGCCTCTC
CGCCCCGTGGGCTGTGAAACCATCTGCCGTGAGGGCTGTGTCTGTGATGCTGGCTTCGTGCTCAGTGGT
GACACCTGTGTCCCTGTGGCCAGTGTGGTGCCTCCACCAAGGGCGCTACTATGCGTTAGTGCCACCT
TCTACCCCGCTATGAGTGTGAGTGGTTCTGTGAGTGCGGGCTGATGACCAGGTCACCTGCAGGATAGA
GACCTGTGGGATCCATGAGGAATGCCGGATAGAGGATGGCATCCGGTCTGCCATCCCAAAAGCTCTAAA
CTAATGCTGGTCTTATGTTACCCATTATGCTACGCTGATGGCTTGGTCTATGACCTTTATGGCTCT
GCTCTACATCTTGCCCAAGTTTGTTCGGAAGCATGGAGAGGAGCGTTCTCCATTGTGCTCGAGAA
GGACTTAGCTGGAACCCCGAGCGGGTGGTGGTACCCTGGCAGGCCAGGTCGTGGTCTGGCGAAAGGG
CCACAGGTGACCCTGGACAGTGAAGTGGTGGCACTACCCATGGTTGTAGGATCCATATATAACCCTG
AAAACCGAAACGATTTCTGCAGACAAAAAGTGGGCTAAAACCTTTTTGATGGCGATGACCATATCCT
TATATCCATCCCGAGTCCCTCCGTGGGCTCTCTGTGGCTCTGTGGGAATTCATGGGAACAGAGT
GACGACTTTGTGCTGCCAGCGGAGTGGTGGCCCAACGTGGAGGCTTTGGAGCTGCATGGCGAGCTC
CCGGCTCCTCTGGGCTGTGGTGAAGGCTGCGGGCCCAAGGCTGCCAGTGTGCTCGGCAGAAAAGAG
AGAATTGTATGAGGAAAACGATGCCTGTGGGAAGATCCGAGACCCCAAGGCCCTTTGCAGCTTGCCAC
AAGGCTCTGAATCACTCGGAATACTCCACCAATGTGTTTTGACCTTTGTACCCATCACGGAGACAGAG
ACTACCTCTGCCGTAGCCTGGCTGCTTATACTGCAGCCTGTGAGGACGCTGGGCAGCAGTGAAGCCCTG
GAGGACAGACAGCATCTGCCCTGCCGAGTGCCTGCCACAGCCACTACTCTATCTGTACACATTCTGC
CAGGGCTCCTGTGCTGCAATCTCTGGCTTCACTGGCTGCACCACGCACTGCTTTGAAGGGTGTGAGTGG
ATGACCACTCCTGCTCTCCAGGGTGTGTCATTCTGCCAGGACTGTGGCTGCTTACAATGACCA
ATATATGCCGGTGGACTTCCCTGATGTCTCAGACTGCAGCGAGCGCTGTTCTGCTCCCAAAACAAC
GGTCTGACGTGCCATGAAGCTGGCTGCCCATCTGGTCGCTGTGAGATCCAGGCTGGAGTCCGGGGTT
GTTGGCCAGCAAAGGCTCTCTGCACCTTCTGTGGGTGGCAACCTCATCACCTTTGATGGGGCTTTCAA
TCCTATCAGCTCCCCTGGTGTCTATGAGCTTTCTTCGATGCCCGGACTCCTGAAGAATGTGCCCTGG
TACCGAGTGTGCTGATGTCCAGCCTTGCCATGACAATGACAAGATCGTGAGCAAGTCCACATCTTCT
TCCAGGATGGCATGGTACTGTGATCCCAAGCAAGGGCACATGGGTGAATGGTCTCCGCTGGATCTCCC
AGCTACTGTGTTAACATCTGTGCTGTGAGGAGGATGCCCGACGGCTCCATGCTTGTCCACCAGAAGGCT
GGGGTACGGTGTGGCTTGAAAAGACGGGCTTCTGGATGTGATGGTGGTATAACCATGCAGCCATGT
TGTGTGGGCTGTGAAAACCTTTGATGGGGACCGGAATAATGATGTTCAAAAAATCAGAAGACAATTC
AATAGAGACGTGGAGAGCACAGGACTTCTCCCATGTGCCAAC

ACGCGTACGCGGCCGCTCGAG - GFP Tag - GTTAA

Protein Sequence:

>MG214417 representing NM_001164655

Red=Cloning site Green=Tags(s)

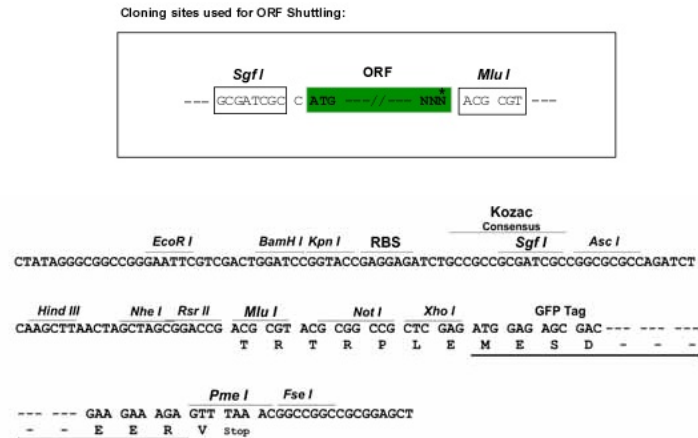
MGSLSWCWALWAGATLLWALLTPAEASCQGIQCAPGQRCQMVSGKAKCLAESTAVCRAQGDPHYTTFDGH
 RYDMMGTCTYTMALRSSKDSLLAFKVDKNEHRSSNKVSYVRLVTVHAYNHTVSLIYGEVLAKIDYQY
 SSLPVSLSEGLLRVHQSGTRGVLELDFGLVVTYDWDGQLTSLPKRFQDQVSGLCGNYNGDPADDFLTPD
 GKQAPDVLNFTKSWKVNQDILLCDDGCGYGNPCSPSCIPSAQLFKKDLFCGMLTLPSPGFADCHQFLDPKPF
 LEECVYDMCVTGGERTLRCGLNAYAQACVDLGISVREWRSTNCPSTCPANSHYELCSPACPPSCNSEA
 RPTNCSRRCVEGCVCLPGFVASRGLCMPVSSCGCIFQDRLLAPGQEVYADEKCHLRCTCDGATQKVICR
 NTTGCLPKEHCGVQNGSFGCFPEYFRICRASGDPHYMSLDERIFNFMGTCTYLFASCGQHPSLPDFKVF
 IENERRGSQSVSFVRSVKLEALGIKLEVRREYQKVLVDGILHYLPFQALGGKLVVFRQKGYAILRTNFS
 LSVSYNWDTHVTAKVPSNYFNVSVCGLCGNFNGDPRDDLKQIRAEIDPRDFGKKWLVSSHLCRTDEQH
 LCPDFNKGVLVSNITQNCRIFTNISGHFKHCWRVPAYNAYSAYIECAYDCCRMPGQTKPLCDTLATYTAICQS
 SGVIVYPWRTETLCPMTCPHSHYELCQRGCP LTCGDQVPVGGCGSDCYESCVCDEGYVLSGEACVPLAS
 CGCVYQGIYHAPGDEFYPGPECNSLCHCDKGLVSCQPSHCSPHEVCKVLDGILRCVGEESATCQVSGAS
 HYTTDFGRHDFMGTCVHVAQTCTWRPGLKPFITLQENAVQGNKQVSVTKKITIEVANYTLQLEQNQWK
 YKVNVDKMLPVLLDEDRVQAFRHGDTMVIETKFGLLVSYDLKYSVRVKVPHNYKHMCGLCDYNDDPK
 NDFQKSDGSAASSNELGDSWEKAVPGSSCTPRPSCPKGQACSPKCYPTLEKKYRGKEFCGLITSPTGPL
 AACHKLLDPQGLQSCVFDLCLGGNQSIILCSSIHAYVSACQAAGGTVKPNRQTFCPMECPPHSHYEV
 ADTCSLDCSAITTPMQLTPCSEGCECDTDFLQSIITTCVPMKCGCHYNGVYYPEESVLIENCQQHVCV
 QPGKGMCCQDHSCKPGQVCEPSGGVLTCTVTKDPCQGVTCRSQETCTEKDGKVCRAVYESKCVWWDGPHY
 HSFDFGLNTNFHGTCSYLMAGTGCPGTGAELTPFSVITKHESQSDPKVSYVRKVTVKTYNTSITIEHKT
 GRVQVNGVFMALPVYLAGGRISVINGGSKAVLETNFGLQVTYNWVWRVHVTLPSSYGAACVGLCGNMDKN
 PQNDQVFPNGTMAPSIPWGGSWQVPGWDPLCWNECQGCSTPCPEDRVEEYRGPFGCPLDHDVTGPFST
 CHAHVPPSEFFEGCVLDVCLGGQVKDILCQALADYAAACQAAGIKIEDWRTQAGCEITCPVNSHYELCGP
 PCPASCPPPAPHTAPTACDGPCEVCGCQDKGFVLSADQCVPLDGGCGCWVNGTYEAGTEFWADTTCSKR
 CHCGPGGDSLVCKPASGLGEECALLASGEIGCQPIAIECQILGDPTYITLDGHRFDQGTCEYLLSAP
 CHAPPTGTEYFNVTVVNEHRCSQAVSYTRITLRIYGLSLTLSAHWPKNLLVDGEMVKLPFQLQSRLLVH
 LSGMGLVVHTSWGLSLTFDGNFMRRLRVPAAAYAGTLCGLCGNYNKNPNDLTAVGGKPEGWKVGGFPDCC
 QCQLRTPKPCPEERKRFGGPNACGIITAPEGLAPCHSFVPPTQYFEACLLDTCQVQGHSGGLCPAIA
 TYVAAQDARVRLREWRKPDFCPLQCPAHSHYQLCGDSCPVSCPSLSAPVGCETICREGCVCDAGFVLSG
 DTCVVPVQCGCLHQGRYYALGATFYPGYCEWFCECGPDDQVTCRIETCGIHEECRIEDGIRSCHPKSSK
 LMLVLHGHTHYATPDGLVYDLYGSCSYILAQVCFPKHGEEAFSIVLEKDLAGNPQRVVVTAGQVVVLAAG
 PQVTVDSEVVALPMVVGSIYITAENRNVFLQTKSGLKLLFDGDDHILISIPSPFRGRLCGLCGNFNGNQS
 DDFVLP SGVVAPNVEAFGAWRAPGSSLGCGEGCGPQCGPVCSAEKREL YEENDACGKIRDPQGPFAACH
 KALNHSEYFHQCVDLCTHHGDRDYLCRSLAAYTAACQAAGAAVKPWRDTSICPAECPAHSHYSICTHSC
 QGSCAAISGFTGCTTQCFEGCECDHFLLSQGVCI PAQDCGCFYNDQYMPVDSLSMSSDCSERCFCSPNN
 GLTCHAEAGPSGRVCEIQAGVRGCWPAKGLCTFSVGGNLTIFDGAFNPISSPGVYELSSRCPGLLKNVPW
 YRVLADVQPCHDNDKIVSKVHIFFQDGMVTVIPSKGTWVNGLRVDLPATVLT SVSVRRMPDGSMLVHQA
 GVTVWLKDGGLDVMVGDNHAAMLGACGNFDGDRNNDVHKNQKTI SIETWRAQDFSPCAN

TRTRPLE - GFP Tag - V

Restriction Sites:

Sgfl-MluI

Cloning Scheme:



ACCN: NM_001164655

ORF Size: 7743 bp

OTI Disclaimer: The molecular sequence of this clone aligns with the gene accession number as a point of reference only. However, individual transcript sequences of the same gene can differ through naturally occurring variations (e.g. polymorphisms), each with its own valid existence. This clone is substantially in agreement with the reference, but a complete review of all prevailing variants is recommended prior to use. [More info](#)

OTI Annotation: This clone was engineered to express the complete ORF with an expression tag. Expression varies depending on the nature of the gene.

Components: The ORF clone is ion-exchange column purified and shipped in a 2D barcoded Matrix tube containing 10ug of transfection-ready, dried plasmid DNA (reconstitute with 100 ul of water).

Reconstitution Method:

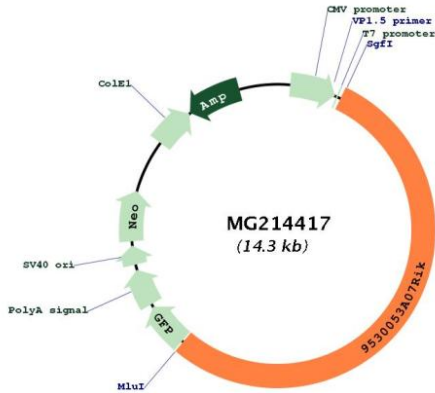
1. Centrifuge at 5,000xg for 5min.
2. Carefully open the tube and add 100ul of sterile water to dissolve the DNA.
3. Close the tube and incubate for 10 minutes at room temperature.
4. Briefly vortex the tube and then do a quick spin (less than 5000xg) to concentrate the liquid at the bottom.
5. Store the suspended plasmid at -20°C. The DNA is stable for at least one year from date of shipping when stored at -20°C.

Note: Plasmids are not sterile. For experiments where strict sterility is required, filtration with 0.22um filter is required.

RefSeq: [NM_001164655.1](#), [NP_001158127.1](#)

RefSeq Size: 7922 bp
 RefSeq ORF: 7746 bp
 Locus ID: 319482
 Cytogenetics: 7 A3

Product images:



Circular map for MG214417