

Product datasheet for **MG214414**

Pcdhb10 (NM_053135) Mouse Tagged ORF Clone

Product data:

Product Type:	Expression Plasmids
Tag:	TurboGFP
Symbol:	Pcdhb10
Synonyms:	Pcdhb5D; PcdhbJ
Mammalian Cell Selection:	Neomycin
Vector:	pCMV6-AC-GFP (PS100010)
E. coli Selection:	Ampicillin (100 ug/mL)



[View online »](#)

ORF Nucleotide Sequence: >MG214414 representing NM_053135
Red=Cloning site Blue=ORF Green=Tags(s)

TTTTGTAATACGACTCACTATAGGGCGCCGGGAATTCGTGCGACTGGATCCGGTACCGAGGAGATCTGCC
GCCGCGATCGCC

ATGGAGATGACACTAGCAAAAACGCCAGAGAACAGGCAAGTCTTTTTTTACTATACTATTGCTATTAT
GGAAGTCTTGTGCCGATGCAATTATATATTCTATACCAGAAGAAAACAGAGAGTGGCTATTTGGTGGCTAA
TTTGGCAAAAAGATCTGGGGCTCCGAGTTGGAGAGCTGGCTATTAGGGGGGCACGAATCCATTACAAGGA
AACAAAGAGCTCTTGCAGCTGGATGCGAGAGCTGGAAATTTATTCTGAAGGAAAAACAGACCGTGAGG
TGCTGTGCAGGGCGACAGAACCCTGTGTCTGCACTCCAGATCATACTGGAAAACCCTGTGCAGTCTT
CCAAACTGAACTGCAGCTCACAGATATAAATGACCACTCTCCAGAGTTCCCTGACCGGAAAATGCTACTG
AAAATCCCTGAGAGCGCCAGCCAGGGACAACGTTTCTCTGAAGGCAGCCAGGACCTGCATAGGGA
GCAATGCTGTTCAAGACTACACAGTCAGTCCCAACCTCCATTTCCATGTGGTACTCTCAGTCGCTCAGA
TGGCAGGAAATACCCAGAGCTGGTGTGGACAGAGCCCTGGACAGGGAGGAGCAGCCTGAACTCACTTTA
ATCCTCACTGCTCTGGATGGTGGAGCTCCACCCAGGTCAAGAACCCAGGATTCACATTGAAGTCGTGG
ACATCAATGATAACGCCCCCGAGTTTATACAGTCACTCTATGAGGTGCAGATTCTTGAAAATAGCCCCCT
TGATGCCTTAGTGGCACAGTCTCTGCCAGGGATTTAGATGCTGGGATATATGGCAAGGTAGCCTACTCT
CTGTTTCAGGATGATGGAATATCTCAACCATTTGTAATAGATGAAATCACAGGAGAAATTCGTCTTAAAG
GGGCAGCTGGATTTTGGAGCAACTCCGTATTATAACATGGAAATTTAGCTACAGACCCAGGAGGCTTTTC
AGGAAAATGCACTGTGTTATCCAGGTGGTGGATGTGAATGACAATGCCCTAAGCTCACCATATCTTCA
CTCAATAGTTCTATCCCAGAAAATGCTCCTGAGACTGTAGTGGCTGTTTTTCAGTGTCTTGATCCGGATT
CTGGGAAAAATGGAAGGATGGTGTCTTATTGAGAACGAACCTCCATTTCTTTGAGTCCACATTTGGA
GAACTATTACTTTAGTAACAGAGGGGACACTTGATAGAGAGAGCAAAGCTGAATACAACATTACTATC
TCCGTACCCGACCTGGGCACCCCGAGGCTCACACCCAGCACACCAATAACAGTGCAGGTGTCTGACATCA
ACGATAATGCCCCACCTTACCCGAACTCCTACACCATGTTTCATCCGGGAGAACACAGCCCTGCCCT
GCACATTGGCACCATCAGCGCCACAGACTCAGACGCAGGCTCCAATGCCACATCACATACTCGCTGCTC
CCGCCCATGATCCGCAGCTGACCCCTCACCTCTCTTGTCTCCATCAATGAAGACAATGGGCAGCTGTTCC
CACTCAGGGCTCTGGAATATGAGGCCCTGCGGGCCTTCGAGTTTCATGTTGCGGCCACAGACCGTGGTTC
ACCCGCGCTTAGCAGCCAGGCTTTGGTACTCGTGGTGGTCTGGACGACAATGACAATGAGCCCTTCGTG
CTCTACCCGTTGCAGAACTCTCTGCGCCCTGTAAGGAGCTAGTACCCAGAGCTGCGGAGGCAGGTTACT
TAGTACCAAGGTGGTGGCTGTGGACCCGCACTCTGGCCAGAATGCCTGGCTGTCATTCCAGTTACTCAA
GGCCACGGAGCCCGGGCTGTTGAGCGTGTGGGCGCACAAATGGGGAGGTGCGCACCACAGGCTGTTGAGT
GAGCGAGATGCACCAAGCACAGGCTGTGCTGGTGGTCAAGGACAATGGGGATCCTCCGCGCTCTGCCA
GGATCCCGCTCAGGAAGGTGATGACGCTCTCACGCTGACTTGGTCAATTGCTTTGGCATCTGTGTCTTCA
CTTTTCTCATTCTGTTCTGCTCTTCTGTTGGGATGAAGCTGTGCAAGAGGGCCAGGTCGCCTTCTCTGG
GTGCTGCTCTGTGCTGAGGGCCACTTCTGCGCCACCTGGTGGATGTTAGCGGAACTGGGACTCTGTC
CCAGAGCTACCAGTATGAGGTGTGTTATCGGGGACTCTGGGACTGGTGAAGTCAAATTCCTTAAACCC
ATGATCTCAAATTAATGGTTCAGGACCTGAGAGAGAAGTGAAGGAAAGTCCGCACTGCAGGGATAGCT
TTGATTTCAGT

ACGCGTACGCGGCCGCTCGAG - GFP Tag - GTTTAA

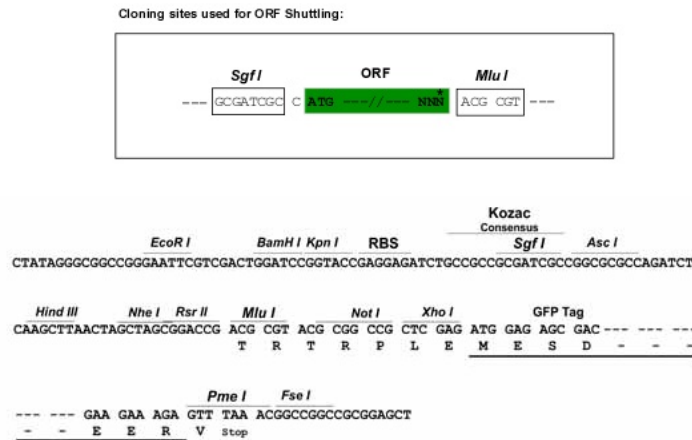
Protein Sequence: >MG214414 representing NM_053135
 Red=Cloning site Green=Tags(s)

MEMTLAKTPENRQVLFFITILLLLWKSCADAIYISPEETESGYLVANLAKDLGLRVGELAIRGARIIHYKG
 NKELLQLDAETGNLFLKEKPDREVLCRATEPCVLHFQIILENPVQFFQTELQLTDINDHSPEFPDRKMLL
 KIPESAQP GTTFPLKAAQDPDIGSNAVQNYTVSPNLHFHVVTLSRSDGRKYPELVLDRALDREEQPELTL
 ILTALDGGAPP RSGTTEVHIEVVDINDNAPQFIQSLYEVQILENSPLDALVATVSARDLDAGIYGKVAYS
 LFQDDGISQPFVIDEITGEIRLKGALDFEATPYNMEIVATDPGGFSGKCTVVIQVVDVNDNAPKLTISS
 LNSSIPENAPETVVAVFVSVDPSDGENGRMVCSIQNELPFLKSTFENYYTLVTEGLDRESKAEYNITI
 SVTDLGTPRLTTQHTITVQVSDINDNAPTFTRTSYTMFIRENNSPALHIGTISATDSDAGSNAHITYSLL
 PPHDPQLTLTSLV SINEDNGQLFALRALDYEALRAFEFHV RATDRGSPALSSQALVLVVLDNDNEPFV
 LYPLQNSSAPCKELVPRAAEAGYLVTKVVAVDRDSGQNAWLSFQLLKATEPGLFSVWAHNGEVTRTRLLS
 ERDAPKHRLLLLVVKDNGDPPRSASVTLHVLLVDGFSQPYLPLSEVVQDPAQEGDDALTYLVIALASVSS
 LFLISVLLFVGMKLCRRARPSLVGCSVPEGHFGHLVDVSGTGTL SQSYQYEVCLSGDSGTGEFKFLKP
 MISNLMVQDPEREVKESPHCRDSFVFS

TRTRPLE - GFP Tag - V

Restriction Sites: SgfI-MluI

Cloning Scheme:



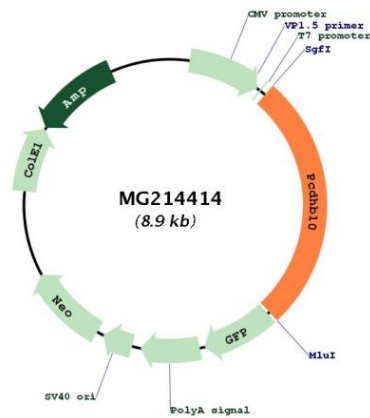
ACCN: NM_053135

ORF Size: 2391 bp

OTI Disclaimer: The molecular sequence of this clone aligns with the gene accession number as a point of reference only. However, individual transcript sequences of the same gene can differ through naturally occurring variations (e.g. polymorphisms), each with its own valid existence. This clone is substantially in agreement with the reference, but a complete review of all prevailing variants is recommended prior to use. [More info](#)

OTI Annotation: This clone was engineered to express the complete ORF with an expression tag. Expression varies depending on the nature of the gene.

Components:	The ORF clone is ion-exchange column purified and shipped in a 2D barcoded Matrix tube containing 10ug of transfection-ready, dried plasmid DNA (reconstitute with 100 ul of water).
Reconstitution Method:	<ol style="list-style-type: none">1. Centrifuge at 5,000xg for 5min.2. Carefully open the tube and add 100ul of sterile water to dissolve the DNA.3. Close the tube and incubate for 10 minutes at room temperature.4. Briefly vortex the tube and then do a quick spin (less than 5000xg) to concentrate the liquid at the bottom.5. Store the suspended plasmid at -20°C. The DNA is stable for at least one year from date of shipping when stored at -20°C.
Note:	Plasmids are not sterile. For experiments where strict sterility is required, filtration with 0.22um filter is required.
RefSeq:	NM_053135.2 , NP_444365.1
RefSeq Size:	2842 bp
RefSeq ORF:	2394 bp
Locus ID:	93881
Cytogenetics:	18 B3

Product images:

Circular map for MG214414