

Product datasheet for **MG214387**

Ccdc62 (NM_001134767) Mouse Tagged ORF Clone

Product data:

Product Type:	Expression Plasmids
Tag:	TurboGFP
Symbol:	Ccdc62
Synonyms:	Al661708; G1-485-3; Gm150; repro29
Mammalian Cell Selection:	Neomycin
Vector:	pCMV6-AC-GFP (PS100010)
E. coli Selection:	Ampicillin (100 ug/mL)



ORF Nucleotide Sequence: >MG214387 representing NM_001134767
 Red=Cloning site Blue=ORF Green=Tags(s)

TTTTGTAATACGACTACTATAGGGCGCCGGGAATTCGTGACTGGATCCGGTACCGAGGAGATCTGCC
 GCCGCGATCGCC

ATGCGTAGCTCTGAGGGCGCCGCTCTGGGCTGTGGCTTTGCCCCGCCGCTGCGGCCGTGCGCCTATG
 GCGTCTCGGAGGTGACCCGCTGCTGGCACCAACTCTCTCTGGGGCGGGGAGTCATCCATGAACCCCTC
 GGCGACCTTATACCGGCCCAGAACATCGGATCAGAAGTTGAGACTTCCACTATTGAGAAGCAGCGGAAG
 GAATTCAGCTGCTCATCGGGAGCTGAAAGACCCGCGATAAGGAGCTCAATGACATGGTCGAGTGCATC
 AGAGGCAGCTTCTCTCTGGGAAGAGGACCGGCAGAAAGTGTACCCTGGAGGAGCGCTGCAGCAAGCT
 CGAAGGTGAGCTGCATAAAAGGACTGACATAATCAAGTCACTGTGAAGAAGGTCAAGACCCTGGAGTCC
 AATCAAGCAGAGTGCCAGACAGCTCTTCAAGACGCAGCAGCAGCTCCAGGAGATGGCTCAGAAGGCCA
 CACACTCCACCCTCTCTCGAAGACCTTGAGGCTAGAAATGAAAATCTCAGCAGCACGTTAGTGGACCT
 CTCTGCTCAGGTAGGACAATTGCAAGCTAGAGAGCAGGCTCTCACTACCATGATAAAGCTAAAGGACAAA
 GACATTATTGAGGCCGTCAATCACATTTACAGACTGCTCGGGTAAATTTAAATTTAGTAGCAGCCTTTAC
 GTGATGCCAAGATGGCGGAGACGTGTGGTGTGAGAGAAAAGCAAGATTATAAGCAGAAATTAAGGCACT
 TAGGATTGAAGTCAATAAACTGAAAGAGGATCTAAATGAGAAGACAACAGAAAACAATGAACAACGAGAG
 GAGATAATTCGACTCAAGCAAGAGAAAAGCTGTCTACATGATGAGCTAATTTTACTGTTGAGAGGGAAA
 AGAGGAAAGATGAATTACTTGTATTTGCAAAGTCAAAGCAAGATCGTACAAATCCGAGCTCCAGAATCT
 GAGACAGATTTATGTAACACAGCAGAGTGACCTGACGTTTCTTAATTTCAATATAGAAAAGTTCTCAGGAA
 TTAATACAAATACATGGCTTAAAGATGGAGGAACCAAAGGCCCTGGAGTGCAGCAAGGACATGTGTTTAT
 CAGACCTTGACAAATAACTACCCAAAAATCGATATTAAGAGAGAGAAAATCAGAAGTATTGGTTAAAGA
 TCAAACGTTTGTAGGTGATGTTGGCTCAGCACAATGGGTGAGACAAGAGCTCTTGTGATGCTTGCAGAGAG
 AAGAAGCTACAGTTAACACTGCACCTCGGGGAAAAAAGTGTAAATGCTCTCTCATCTCTATTTACCAAAG
 ACTTACTGGACAAACAAAAGTCTTGGTCTCTGGTGGGAAAATCCAGACTGAACCGGAAAAACAAAGTTAC
 CCTATGCAAGTCCATGCAAAGTCAACAAAATGCGATGGAGTGGGGCTTCCAACGGAAGAGAAGCAGCTC
 TCGGAAACCTCCGTCTCGCTGTCTGACGAGAAGCAGTGGCATGACATCAACGTCTACCTGGGCTTTCCA
 GCTGCTCAAAACAGCCAGACAGGCTGGACGGGATGGCCACGACCCACAGGAACATCTGAGGTCTCCTG
 CTGCACCCCAATGTAGTCTGTATAGGTGACAATGACCTGTCCGAGTCCAAGTGTGCCACCCCAAGTAAC
 ATCATCATGAAGCCCAAGGACATATGACTGATACAGAGTGGATGAATATTTTCAAGCCTTCCAGAGCAC
 AAAGGATTGTTCCGCCACAAAACCATGTGCACTTGTTCAGAAGTGTGAGCGCAATGAAATATAATTCCTC
 AGCAAGTGAGCTCATTGGCATGCAGCCTTCCCAGTGTGTGGGTTTCTTAAAGTCTGCTGAAAGAGAAGAG
 GAGTCAAGCGGCCCTTCTGACAGAAGAACCTCAGCCAAATGAAAAGGATGACTTCTCTCTACGAGTAAGC
 TCCAGCGGCTGTGGCCGAGTCCCGCAGATGGTCACGGATCTGGAGCTGAGCACGCTGCTACCCATCAG
 CTGCGAGAATCTCAACAGAAGCAAATAGAAAGTCTCAGAAGAGCCAGATGAAAAACCCCTTGTGAGT
 CAT

ACGCGTACGCGGCCGCTCGAG - GFP Tag - GTTTAA

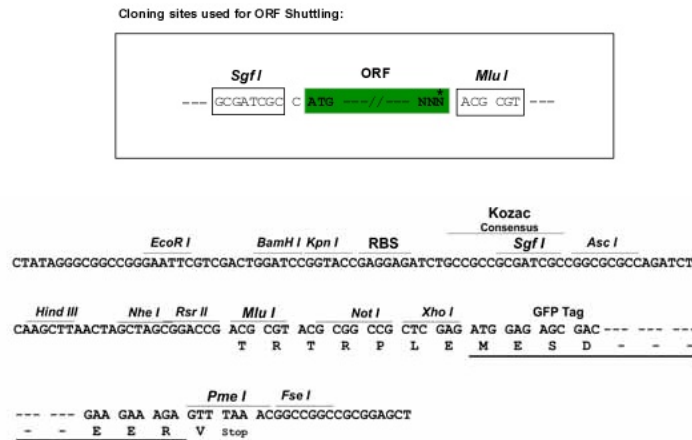
Protein Sequence: >MG214387 representing NM_001134767
 Red=Cloning site Green=Tags(s)

MRSSEGAPSWAVALPPPLRPCAYGVSEVTRCWHQLSLGAGESMNPSTLYRRQNIQSEVETSTIEKQRK
 ELQLLIGELKDRDKELNDMVAHVQRQLLSWEEDRQKVLLEERCCKLEGLHKRDIKSLMKVKVKTLES
 NQAECQTALQKTQQQLQEMAQKATHSTLLSEDLARNENLSSTLVDLSAQVGLQAREQALTTMIKLDK
 DIIIEAVNHSIDCSGKFKLLEHALRDAKMAETCVVREKQDYKQKALKALRIEVNKLKEDLNEKTENNEQRE
 EIIRLKQEKSLHDELIFTVEREKRKDELLEIAKSKQDRNSELQNLRIYVKQSDLQFLNFNIESSQE
 LIQIHGLKMEEPKALECSKDMCLSDLNNYPKIDIKRERNQKSLVKDQTFEVLMAQHNGSDKSSCDACRE
 KKLQVNTALGKESVIALSSLFTKDLLDKQKSWSLGGKIQTPEPENKVTLCVHAKSPKCDGVGLPTEEKQL
 SETSVSLSDEKQWHDINVYGLSSCSKQPDRLDGDGHDRTGTSEVSCPTPNVVICGDNLSESKCCHPSN
 IIEAPGHMTDTEWMNIFKPSRAQRIVRHKTMCCTSRVSVAMKYNSASELIGMQPSQCVGLSKSAEREE
 ESAALPDRRTSANEKDDFSPSTSKLQRLLAESRQMVTDLELSTLLPISCNENLRSKLEVSEEPDEKTTLV
 H

TRTRPLE - GFP Tag - V

Restriction Sites: SgfI-MluI

Cloning Scheme:



ACCN: NM_001134767

ORF Size: 2103 bp

OTI Disclaimer: The molecular sequence of this clone aligns with the gene accession number as a point of reference only. However, individual transcript sequences of the same gene can differ through naturally occurring variations (e.g. polymorphisms), each with its own valid existence. This clone is substantially in agreement with the reference, but a complete review of all prevailing variants is recommended prior to use. [More info](#)

OTI Annotation: This clone was engineered to express the complete ORF with an expression tag. Expression varies depending on the nature of the gene.

Components: The ORF clone is ion-exchange column purified and shipped in a 2D barcoded Matrix tube containing 10ug of transfection-ready, dried plasmid DNA (reconstitute with 100 ul of water).

Reconstitution Method:

1. Centrifuge at 5,000xg for 5min.
2. Carefully open the tube and add 100ul of sterile water to dissolve the DNA.
3. Close the tube and incubate for 10 minutes at room temperature.
4. Briefly vortex the tube and then do a quick spin (less than 5000xg) to concentrate the liquid at the bottom.
5. Store the suspended plasmid at -20°C. The DNA is stable for at least one year from date of shipping when stored at -20°C.

Note: Plasmids are not sterile. For experiments where strict sterility is required, filtration with 0.22um filter is required.

RefSeq: [NM_001134767.1](#), [NP_001128239.1](#)

RefSeq Size: 3920 bp

RefSeq ORF: 2106 bp

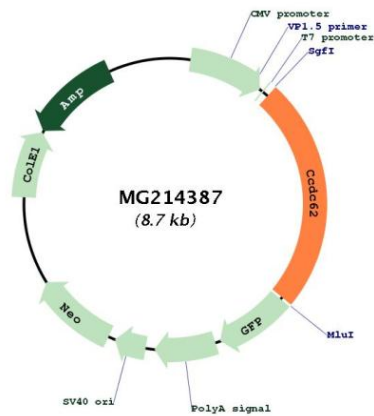
Locus ID: 208908

UniProt ID: [E9PVD1](#)

Cytogenetics: 5 F

Gene Summary: Nuclear receptor coactivator that can enhance preferentially estrogen receptors ESR1 and ESR2 transactivation. Modulates also progesterone/PGR, glucocorticoid/NR3C1 and androgen/AR receptors transactivation, although at lower level; little effect on vitamin D receptor/VDR (By similarity).[UniProtKB/Swiss-Prot Function]

Product images:



Circular map for MG214387