

## Product datasheet for **MG214355**

### Sval3 (NM\_001003952) Mouse Tagged ORF Clone

#### Product data:

**Product Type:** Expression Plasmids  
**Tag:** TurboGFP  
**Symbol:** Sval3  
**Mammalian Cell Selection:** Neomycin  
**Vector:** pCMV6-AC-GFP (PS100010)  
**E. coli Selection:** Ampicillin (100 ug/mL)

**ORF Nucleotide Sequence:** >MG214355 representing NM\_001003952  
Red=Cloning site Blue=ORF Green=Tags(s)

TTTTGTAATACGACTCACTATAGGGCGGCCGGAATTCGTCGACTGGATCCGGTACCGAGGAGATCTGCC  
GCCGCGATCGCC

ATGGCTTCTCTCAAATCTCCAGCAGACTGGAGGAGTCATGCTCCTGATTCTGAGCCTACTTCTGGAGA  
CTGCCTATGGTCAAGACAATAGAAACAAGTCACTTTCCTCAACAGGAGACTCTCTCAGACAACAGGAC  
AAATGAAGTTATAGTAGAACTCACAGTTACAAACAATGTGGATAAATGCTTGGGGATAGAAATCAGTACT  
GAGGACAATCCAAATATCAAGTACCTTTCTACTCCTGAAATCCCTCTTGCTTGTGTGTACTTCTGCCA  
AATTCTTCTGGAACGTTTCATGTCTCTGAGAATGCTGTCTACAAATGAAGTGGAAAGTTTTTTCAGAAAA  
GGACATATGTAATGATGATAATACCAACACCTAGTAACTATCTACCTCAGGTACTTTATATAAATTG  
CTTGAATAGAA

ACGCGTACGCGGCCGCTCGAG - GFP Tag - GTTAA

**Protein Sequence:** >MG214355 representing NM\_001003952  
Red=Cloning site Green=Tags(s)

MASLQILQQTGGVMLLILSLLLETAYQDNRNKSLSLNRRLSQTNRTNEVIVELVTNNVDKCLGIEIST  
EDNPNIKYLSTPEIPLACVCTSAKFFWNVHVSNAVLQMKVEVFSEKDICNDNTQHLVTIYLRITYLKL  
LEIE

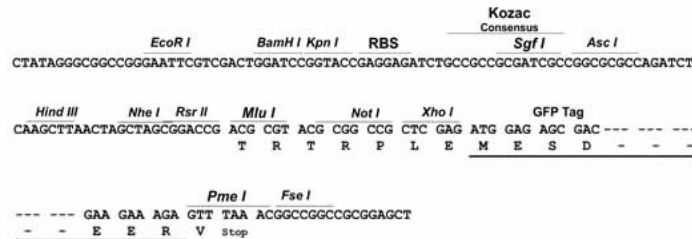
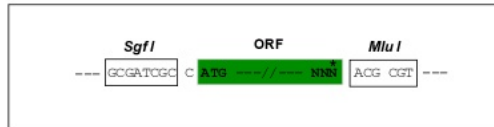
TRTRPLE - GFP Tag - V

**Restriction Sites:** SgfI-MluI



**Cloning Scheme:**

Cloning sites used for ORF Shutting:


**ACCN:** NM\_001003952

**ORF Size:** 432 bp

**OTI Disclaimer:** The molecular sequence of this clone aligns with the gene accession number as a point of reference only. However, individual transcript sequences of the same gene can differ through naturally occurring variations (e.g. polymorphisms), each with its own valid existence. This clone is substantially in agreement with the reference, but a complete review of all prevailing variants is recommended prior to use. [More info](#)
**OTI Annotation:** This clone was engineered to express the complete ORF with an expression tag. Expression varies depending on the nature of the gene.

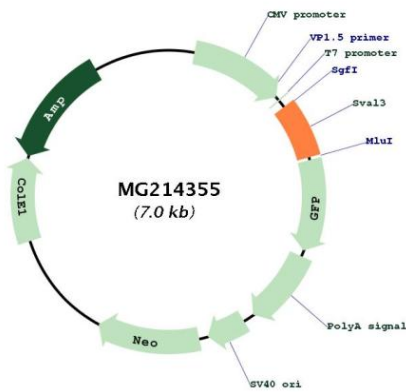
**Components:** The ORF clone is ion-exchange column purified and shipped in a 2D barcoded Matrix tube containing 10ug of transfection-ready, dried plasmid DNA (reconstitute with 100 ul of water).

- Reconstitution Method:**
1. Centrifuge at 5,000xg for 5min.
  2. Carefully open the tube and add 100ul of sterile water to dissolve the DNA.
  3. Close the tube and incubate for 10 minutes at room temperature.
  4. Briefly vortex the tube and then do a quick spin (less than 5000xg) to concentrate the liquid at the bottom.
  5. Store the suspended plasmid at -20°C. The DNA is stable for at least one year from date of shipping when stored at -20°C.

**Note:** Plasmids are not sterile. For experiments where strict sterility is required, filtration with 0.22um filter is required.

RefSeq:	<u>NM_001003952.1, NP_001003952.1</u>
RefSeq Size:	550 bp
RefSeq ORF:	435 bp
Locus ID:	387564
Cytogenetics:	6 B2.1

**Product images:**



Circular map for MG214355