

Product datasheet for **MG214353**

Fam151b (NM_001163627) Mouse Tagged ORF Clone

Product data:

Product Type:	Expression Plasmids
Tag:	TurboGFP
Symbol:	Fam151b
Synonyms:	4930405M20Rik
Mammalian Cell	Neomycin
Selection:	
Vector:	pCMV6-AC-GFP (PS100010)
E. coli Selection:	Ampicillin (100 ug/mL)

ORF Nucleotide Sequence: >MG214353 representing NM_001163627
Red=Cloning site Blue=ORF Green=Tags(s)

TTTTGTAATACGACTACTATAGGGCGCCGGGAATTCGTCGACTGGATCCGGTACCGAGGAGATCTGCC
GCC**GCGATCGCC**

ATGGCAGCATGTGCAGGGGGCCGGGATCCTGGAGTGAAAATATACTGAAATATTTTCTGAGGAACAACC
AGATCACGGCAGAAGACGGCGCTGAGATCCTCTGGTCCCACGCAGCCAACCACAAAGTCTCAGATGAACGA
GGCGCTGAAGAGTGCTGCCACATGATAGAGGCTGATGTCCTTCTCCTAGTGACGGATCAGAGCATGGC
CAGCCAATCATGGCCATCCTCCTGAGACAAGCAGTGATAACACTTTCAGGAGTGGCTGGCTGAGGTTG
TGAAGAGCAACAAGGGCATCAAGTTGGATTTCAAGAGTCTGGCAGCAGTCAGAGCGTCCATGCTGTTCTC
GGACAACATGAAGCAGCACCTGCAGCGCCCGTGTGGATTAATGCCGATATTCTTCCCGGGCCAAATGGG
AGCAGCAAAGTAGTGGATGCCAAAGCCTTCTAGACACCGTGACATCCTTCTCCCGGACGTGACCTTTT
CCTTGGGTTGGACAACAGGATGGCATCCTGAGAAAGTCAATGAAGGCTACAGTTGGTCGATGGTAAAGA
GATGGACTACATATGCAGCGAGCTAACCCAGCCGGTCACGTTCCCTGTCAAGGGCAGCTTTAGTGAGGCAG
TCGTGTCTCAGTTGCTCTGGCTATTGACAAAATCAAACAGGTACAGCTTAACTGTTTGGACTGGAAAAG
ATGACATTTATCCACTGAGGATTTACTTTACATTCGAGACTCTTAAATAAAACCCAAGTTTTCTATGA
TATTTTCAGAACCAAAAACCATGAATTTAAACAAGCCATTGGAATTCGAGGCCATTCTCTAAGAATA

ACGCGTACGCGGCCGCTCGAG - GFP Tag - GTTTAA



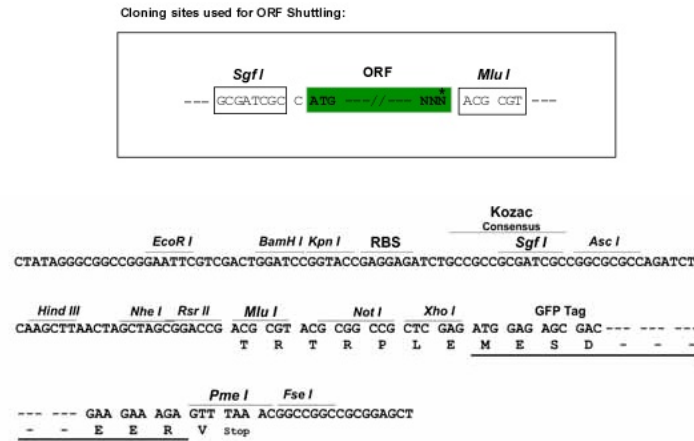
Protein Sequence: >MG214353 representing NM_001163627
 Red=Cloning site Green=Tags(s)

MAACAGGPGSWSENILKYFLRNNQITAEDGAEILWSHAANHKSQMNEALKSAAHMIEADVLLPSDGSEHG
 QPIMAHPPETSSDNTLQEWLAEVVKSNKGIKLDFKSLAAVRASMLFLDNMKQHLQRPVWINADILPGPNG
 SSKVVDAKAFLDVTVSFFPDVTFSLGWTTGWHPEKVNEGYSWSMKEMDYICSELTQPVTFPVRAALVRQ
 SCPQLLWLLTKSNRYSLTVWTGKDDIYSTEDLLYIRDYFNKTQVFYDISEPQNHEFKQAIGIRGHSRLRI

TRTRPLE - GFP Tag - V

Restriction Sites: SgfI-MluI

Cloning Scheme:



ACCN: NM_001163627

ORF Size: 837 bp

OTI Disclaimer: The molecular sequence of this clone aligns with the gene accession number as a point of reference only. However, individual transcript sequences of the same gene can differ through naturally occurring variations (e.g. polymorphisms), each with its own valid existence. This clone is substantially in agreement with the reference, but a complete review of all prevailing variants is recommended prior to use. [More info](#)

OTI Annotation: This clone was engineered to express the complete ORF with an expression tag. Expression varies depending on the nature of the gene.

Components: The ORF clone is ion-exchange column purified and shipped in a 2D barcoded Matrix tube containing 10ug of transfection-ready, dried plasmid DNA (reconstitute with 100 ul of water).

Reconstitution Method:

1. Centrifuge at 5,000xg for 5min.
2. Carefully open the tube and add 100ul of sterile water to dissolve the DNA.
3. Close the tube and incubate for 10 minutes at room temperature.
4. Briefly vortex the tube and then do a quick spin (less than 5000xg) to concentrate the liquid at the bottom.
5. Store the suspended plasmid at -20°C. The DNA is stable for at least one year from date of shipping when stored at -20°C.

Note: Plasmids are not sterile. For experiments where strict sterility is required, filtration with 0.22um filter is required.

RefSeq: [NM_001163627.1](#), [NP_001157099.1](#)

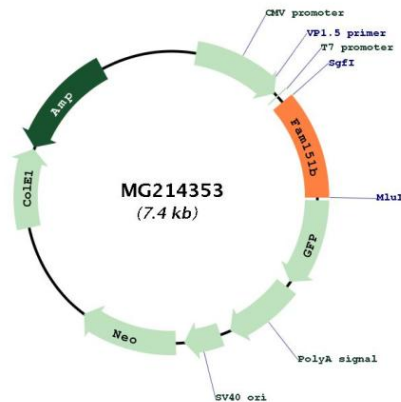
RefSeq Size: 1398 bp

RefSeq ORF: 840 bp

Locus ID: 73942

Cytogenetics: 13 C3

Product images:



Circular map for MG214353