

## Product datasheet for **MG214349**

### Gm906 (NM\_001033438) Mouse Tagged ORF Clone

#### Product data:

<b>Product Type:</b>	Expression Plasmids
<b>Tag:</b>	TurboGFP
<b>Symbol:</b>	Gm906
<b>Mammalian Cell Selection:</b>	Neomycin
<b>Vector:</b>	pCMV6-AC-GFP (PS100010)
<b>E. coli Selection:</b>	Ampicillin (100 ug/mL)



ORF Nucleotide Sequence: >MG214349 representing NM\_001033438  
Red=Cloning site Blue=ORF Green=Tags(s)

TTTTGTAATACGACTACTATAGGGCGCCGGGAATTCGTGACTGGATCCGGTACCGAGGAGATCTGCC  
GCCGCGATCGCC

ATGGAGAATTTTCTCTCTGATGAATAGCATTATTGATCCATGGATGAGCAACAGCTCCATGGACATAG  
CAATGGACATGACCATTGGCTTTATGTGTGGAGTTGGGCTCTTTTCTACTTATCCCTTCTGAAGGA  
GTACCCAGTGTACCAGCATCTGAGAATGAATGGAGCAAAACACAGGATGTGAAGAGGTGGCAGAAGAAG  
ACCAGTAAGAAAACAGCTACTGGAAAAGGTTGTACAGATGGAGGAAAAAATGCAGAAGAGACCAAGACAC  
CATCACAACCTATGGAATCCCCAACAGCAACGTTACAAAAATCTTAGTCGATTTTCTGGGGTACATA  
CTCTATTAACCTCTGAATCAGTTGTGGCTACTGTCCATGAGCTCAGAAGCCCTTCTTGGGAAAAATGAAA  
TCTGTGAGGTTTAGTGATGACAGTGGCCCTGACAAAGCTCCATCCAAGGCTAAAGGACTTCCACAGCATT  
CCCAGCATCAGCCATTACCTCACCCCGTGTGATACCAAACCTGGTAGATGAGAAAACAAGTCCAAGAAAA  
GAAAACTCTCACAACCTACCCGAAAAACAACACCACCTGTTTCAAAGTAGGACCTATGTGGTGCCA  
CATCCACCACTGAGAGAAGGAAACAGGCATCCCTACCAAGCTGGAAGCCTGCCTGGGAAACATGGACCAT  
ATTCAAAAGAAACCAAGATTATGATGAGCGAAAAACATCAAAAAGCTATTAGCAAGCCCACTGACAACTT  
GCGCAGGGACACCTGCATTGTAAGCTATCAGTCCAGTCAATCCATCCTGAGCATTGCCAGAGGCTC  
CAGCTCCATAAGGAGCCAGAGAATAACGAAAAGACAACCTAGAGTCAAAGAACAACAGGAACCCCACTTCA  
GATTCCTCCCTACAGGAAACCGCCATGTACAGGAACATTTCCAGCAAAACACTGTTTATTGTTGAAA  
GAACAGGCCTCAACTCTCCAGCCTGCCAGGCCTCCATCTTCAACACCAAAACCTACAAAATGTAGTAAA  
TGGAAGGGTCTGTGCCTACAGGGCTGCCCTTAAAGAAGGACATAGCAAAGTCTGATATGCATAACACCA  
TCAAGAAGGACCTTGGTGTGGGGCACAAAAGTGCCCTGGCACTGCAAGCAGCAGCCCTGGGAAGGAGGT  
GAGACCAAGAAACCTGCACTGAGGACAGAGAAGGTGTCTCCATGAAACCTGTCTGGCACTATTCCCTG  
CCTGAGGCAAGACAGCATCAAAATTCACAGAGTGTCCAGTAAAACAAAGGAGACCATATCTGCAGATGC  
TTGTGGCAAGGGATCTGACCCACCTGGAGTTCAGCCTCAAACCTCCCCAGGTTGTGTATCCCTCCTC  
GCCATCTGCAATTCGAAGCTGCCAGGCTCCTGGAAAAGTGCATCACCAGGATCCAGGAGGAACAAGG  
ATGAAAAGTGCATCAGTTGCGAGGCCAGAGAGCTGAGTTTATACACTCACTCCAGAGGCTCAGGAGA  
CCCACAGAGCCCTCCATTTGCTGCCAGCCATGGGGCCACAAAAGTCTCATCTAGATCCATTGCCAAAATA  
CCTCAGTGTTCAGAGACCTGCTTGTACTTCCAGGCAGCAAATCCCCAACAGATCAGGACTCTCTGGGGC  
ACTGGAAAAGGCAGTCTGAAGCCAAGTACCAATCTCAAAATGGCCAAGCATGCACCACAGAAGAACTTTC  
AGGAGGTGGACTCACGACATCGCCATGGTGTATGACAATGGAAGGCCCTGGACAAAAGGGTCTACCTTC  
AGGAGCCAAACAACTACAGTGGAGGTGAAAGAAGAGCCACCTCATGCATGGAGAGTGAAGTCTGGGATCC  
AGTGAGAGTCACTTGGTAAGCATATCGATATCAGACCCAGGGACTTTGGGTCATTATGGGCCAACAGAC  
TCCCAGCCATCTACAAATACCTACCTCCCAACACTCACAGGACTCAAGTGAGAGTATTTTAGTTCAA  
CCAGCAGCCAAGAGCCTGGCCTGTGAGTCAACATCCAGTTGGCCCCAGTAGAGTCATCCCTGCTGATGTC  
AACTTGCTTCAAAGGACTCTCTGCCAGTTCAGAAATACAGTCCAAAACACCAAGCCTTCCCAGGGCT  
TATGCGATGCTCATGAGGAGACACCAGAGGAGTGAATCAAGAGAACAGGGTCTAGCTGATAAGAT  
CAAAGTTTGTGATCATGATGGGGTCCATCCCCATGTAGAGAGCCAGAGTATAAAATCTAGGGCCATACGC  
CTGGCAGAAAAGGCTTGAAGAAAATAAGGCCTTCGATCCTGAGCTCCATAAAGCTCAAGGATACAGCCAAGT  
CTAGGATAGCAGAAAAAGGAGAGGCTACTTCTAATACCTCTCGGAAGAACCTTACTTAATAATTTACT  
AGAAAAGAACTCAGCAAAAAATACAGTGAAGCAAGGGGATTCTTTAAGGATTGATCAACCCACACAGCT  
GCTGAGCAGACAAAAGTCTTAACCATTAATGGTCACTACAGAATGATAGCTGCACTGAAATCCCTTG  
TGGATGTTCTGTTCCAGATCTTGGAGGACAGTGAAGGGGACACATCAGAGGTACAAGGGAGTGAAGTGG  
ATCACTGACAACCCAGCTGACATCCCACTCTTCTGAGAGTCTGTATGACACAACTATAGCAGACCAGCA  
AGCAGGAGGAGCTGTGGCCATTCCACCTCTGAGATGCATAACTATTCTTTGACATATAGAAGAATGGGAG  
ACAAAATGCAGTTAGGATTAAAGCCAAAGAGCCTGTGACCCATATATGAACCAAGAGATGAGAGGGAT  
GTGCTTTGACCAGCTCCATATGCCCAAGGGGAAAGAAGCTTCCATGTGAGTACAGGAGAAATGGAGCCAAG  
CAGGAGCCAGGTCTTGTGCCAGCAAGCCTCTGACTTAGGTATACCTTGCAAGATAGGTTAAGGAGCA  
GGTGGCTCAGGCCATCCATGCCTTCCCACACCAGGATCTTC

ACGCGTACGCGGCCGCTCGAG - GFP Tag - GTTTAA

**Protein Sequence:** >MG214349 representing NM\_001033438  
 Red=Cloning site Green=Tags(s)

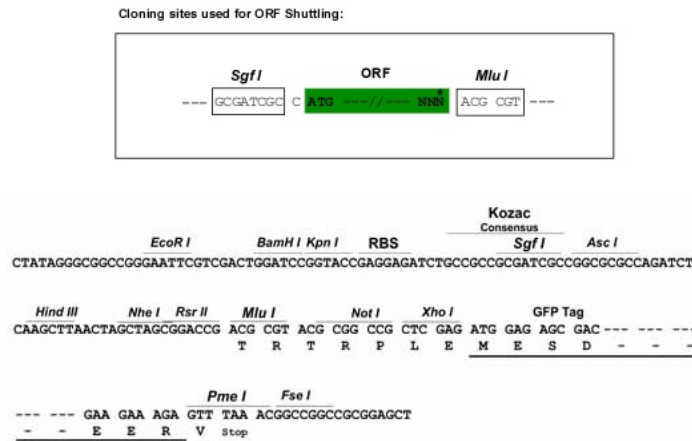
MENFLSLMNSIIDPWMSNSSMDIAMDMTIGFMCVGLFFLLIPFLKEYVPVSPAENEWSKPDVKRWQKK  
 TSKKTATGKCTDGGKNAEETKTPSQPMEIPNKQRYKNLSRFFWGTYSINSESVVATVHELRSPLGKCK  
 SVRFSDDSGDPKAPSKAKGLPQHSQHQLPHHRVIPNLVDEKQVQEKKILTKSTRKQTPPCFKSRTYVVP  
 HPTTERRKQASLPAGSLPGKHGYPYSKETKDYDERKHQKAI SKPTDNLRRDTLHCKAISPVIIHPEHCQRL  
 QLHKPENNEKTTRVKEQQGTPFRFLPYRKPETHVQEHFANTVHYCKNRPQLSQPAQASIFNTKPYKCSK  
 WKGSVPTGLPLKKDIAKSDMHNTIKKDLGVGAQKVPGTASSSPGKEVRPKPALRTEKVSSMKPAGHYSL  
 PEAKTASNFTCPVKQRRPYLQMLVARDLTPPGVPASNLPQVVYSSPICNSKAARVLEKLHHQDPGGTR  
 MKSASVARPERAEFIHSLPEAQETHRAPFAASHGATKSHLDLPKYL SVQRPACYFQAANPQQIRTWLG  
 TGKGSLLKSTNLKMAKHAPQKNFQEVDSRHRPWCMTMEGPGQRVLP SGAKQTTVEVKEEPPHAWRVSLGS  
 SESHIGKHIDIRPRDFGSLWANRLPAHLQIPTSQHSQDSSEIFSSNQQPRAWPVSHHPVGPSRVIPADV  
 NLPKSDLSLPSFQNTVQNTKPSQGLCDVLMRRHQRSDTQENRVLADKIKVCDHDGVHPHVESQSISRAIR  
 LAERLEEIRPSILSSIKLKD TAKSRIA EKGEATSNTRKNTLLNNLLERNLSKKYSEQGDSLIDQPTPA  
 AEQTKVLTIKMVIYRMIAALKSLVDVLFQILEDSEGDTSEVQGSEVSLTTQLTSHSSESLYDTNYSRPA  
 SRRSCGHSTSEMHNYSLYRRMGDKLQLGIKAQRACDPYMNQEMRGMCFDQLHMPKGKELPCEYRRNGAK  
 QEPGLVAQQASDSRYTLQNRLRSRWLRPSMPSHTRIF

TRTRPLE - GFP Tag - V

**Restriction Sites:**

Sgfl-MluI

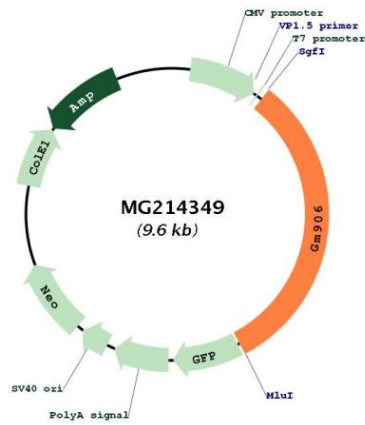
**Cloning Scheme:**



**ACCN:** NM\_001033438

<b>ORF Size:</b>	3051 bp
<b>OTI Disclaimer:</b>	The molecular sequence of this clone aligns with the gene accession number as a point of reference only. However, individual transcript sequences of the same gene can differ through naturally occurring variations (e.g. polymorphisms), each with its own valid existence. This clone is substantially in agreement with the reference, but a complete review of all prevailing variants is recommended prior to use. <a href="#">More info</a>
<b>OTI Annotation:</b>	This clone was engineered to express the complete ORF with an expression tag. Expression varies depending on the nature of the gene.
<b>Components:</b>	The ORF clone is ion-exchange column purified and shipped in a 2D barcoded Matrix tube containing 10ug of transfection-ready, dried plasmid DNA (reconstitute with 100 ul of water).
<b>Reconstitution Method:</b>	<ol style="list-style-type: none"><li>1. Centrifuge at 5,000xg for 5min.</li><li>2. Carefully open the tube and add 100ul of sterile water to dissolve the DNA.</li><li>3. Close the tube and incubate for 10 minutes at room temperature.</li><li>4. Briefly vortex the tube and then do a quick spin (less than 5000xg) to concentrate the liquid at the bottom.</li><li>5. Store the suspended plasmid at -20°C. The DNA is stable for at least one year from date of shipping when stored at -20°C.</li></ol>
<b>Note:</b>	Plasmids are not sterile. For experiments where strict sterility is required, filtration with 0.22um filter is required.
<b>RefSeq:</b>	<a href="#">NM_001033438.2</a> , <a href="#">NP_001028610.1</a>
<b>RefSeq Size:</b>	3152 bp
<b>RefSeq ORF:</b>	3054 bp
<b>Locus ID:</b>	380882
<b>Cytogenetics:</b>	13 A5

Product images:



Circular map for MG214349