

Product datasheet for **MG214337**

Tmem179b (NM_026325) Mouse Tagged ORF Clone

Product data:

Product Type: Expression Plasmids
Product Name: Tmem179b (NM_026325) Mouse Tagged ORF Clone
Tag: TurboGFP
Symbol: Tmem179b
Synonyms: 0610031L02Rik; 1500003K22Rik; 1810059G22Rik
Mammalian Cell Selection: Neomycin
Vector: pCMV6-AC-GFP (PS100010)
E. coli Selection: Ampicillin (100 ug/mL)
ORF Nucleotide Sequence: >MG214337 representing NM_026325
Red=Cloning site Blue=ORF Green=Tags(s)

TTTTGTAATACGACTCACTATAGGGCGGCCGGAATTCGTCGACTGGATCCGGTACCGAGGAGATCTGCC
GCC**CGATCGCC**

ATGGCGCTGCCCTGGTTGCAGCGAGTTGAGCTCTTGCTCTTCACTGCCGCCTTCTGTGCGGGCTTTGG
CGGCCGCGACGCTGACCCGGACCCAGGGCTCCTTTGGTGGTAACTGTCCCTTGTATGGTGTGGCTGCACT
CAATGGCTCCTCTCTGGCCTTGTAGGTCCCTCAGCCCCCTCCCTCTGCTACTTCGTGGCTGGGGCTTCA
GGCATCTTGGCACTCTACTGCCTTCTGCTTCTCTTCTTCTGGGTCTACAGCAGCTGCATCGAAGACTCCC
ACAGAGGTTCTATAGGGCTCCGAATTGCTTTGGCCATCTCAGCTACAGCCATCTTCTGATCTTAGTGTC
TGCTGTATACTTCGATTTGGCACCAATCTTTCTGCAATTCATCATCTCCTTGAACCTTACAATTAGC
TGCTCTGAAGCCCAGAAAACCTCATGGACACCTTCAGGAAGTGTGTGCAGTTTTACTCCAACCTACATA
CTGCTGAAACCTCTTCTTGGGTGAATCTGATATTGGTGTCTGGCTTTGCTGCTCCAGGCCATGCAGTG
CAAGTTTAAAGCCACATCATACCAGCCCCAAGAGAGGGGTGACCAAGAGTGGAGCTCTGAGACAGATGCT
CTTGTGGGCACCACCAGTCTCACTCC

ACGCGTACGCGGCCGCTCGAG - GFP Tag - GTTTAA



[View online »](#)

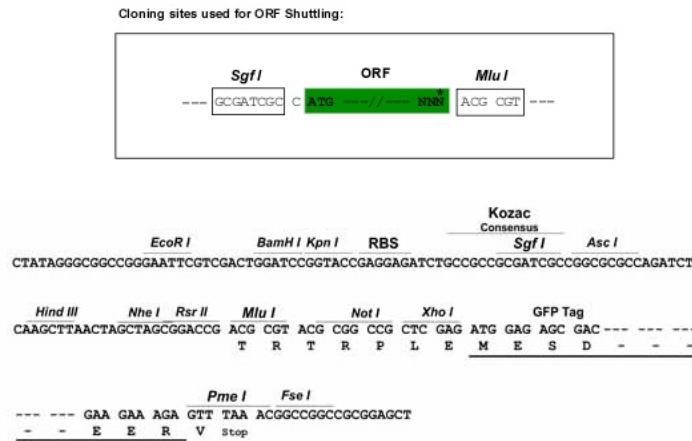
Protein Sequence: >MG214337 representing NM_026325
Red=Cloning site Green=Tags(s)

MALPWLQRVLELLFTAFLCGALAAATL TRTQGSFGGNCPLYGVAALNGSSLALLGPSAPSLCYFVAGAS
 GILALYCLLLFFWVYSSCIEDSHRGSIGLRIALAISATAIFLILVSACILRFGTNSFCNSIISLNLITIS
 CSEAQKTSWTPSGTAVQFYSNLHTAETSSWVNLILWCLALLLQAMQCKFKATSYQPQERGDQEWSSETDA
 LVGHHQSHS

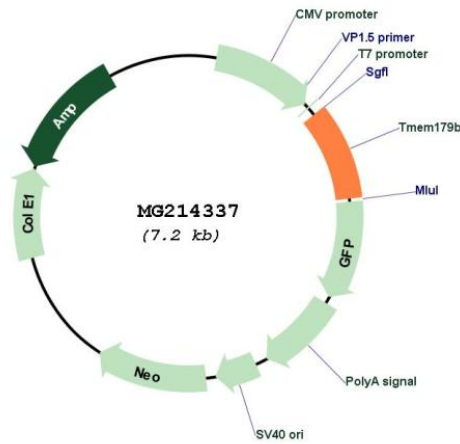
TRTRPLE - GFP Tag - V

Restriction Sites: SgfI-MluI

Cloning Scheme:



Plasmid Map:



ACCN: NM_026325

ORF Size: 657 bp

OTI Disclaimer:	The molecular sequence of this clone aligns with the gene accession number as a point of reference only. However, individual transcript sequences of the same gene can differ through naturally occurring variations (e.g. polymorphisms), each with its own valid existence. This clone is substantially in agreement with the reference, but a complete review of all prevailing variants is recommended prior to use. More info
OTI Annotation:	This clone was engineered to express the complete ORF with an expression tag. Expression varies depending on the nature of the gene.
Components:	The ORF clone is ion-exchange column purified and shipped in a 2D barcoded Matrix tube containing 10ug of transfection-ready, dried plasmid DNA (reconstitute with 100 ul of water).
Reconstitution Method:	<ol style="list-style-type: none">1. Centrifuge at 5,000xg for 5min.2. Carefully open the tube and add 100ul of sterile water to dissolve the DNA.3. Close the tube and incubate for 10 minutes at room temperature.4. Briefly vortex the tube and then do a quick spin (less than 5000xg) to concentrate the liquid at the bottom.5. Store the suspended plasmid at -20°C. The DNA is stable for at least one year from date of shipping when stored at -20°C.
RefSeq:	NM_026325.3 , NP_080601.2
RefSeq Size:	848 bp
RefSeq ORF:	660 bp
Locus ID:	67706
UniProt ID:	Q9CY24
Cytogenetics:	19 A