

Product datasheet for **MG214317**

Zfp408 (NM_001033451) Mouse Tagged ORF Clone

Product data:

Product Type:	Expression Plasmids
Tag:	TurboGFP
Symbol:	Zfp408
Synonyms:	Gm1011
Mammalian Cell Selection:	Neomycin
Vector:	pCMV6-AC-GFP (PS100010)
E. coli Selection:	Ampicillin (100 ug/mL)



[View online »](#)

ORF Nucleotide Sequence: >MG214317 representing NM_001033451
 Red=Cloning site Blue=ORF Green=Tags(s)

TTTTGTAATACGACTCACTATAGGGCGCCGGGAATTCGTGCGACTGGATCCGGTACCGAGGAGATCTGCC
 GCCCGGATCGCC

ATGAAGACACCGCACGAGGAGGACTTCTCGTTAGCCCCGTGCGGAGCCATCTGTCCCCGGCAGCAAAGTT
 CCACCTTGGACCAGTTTGGTGCAGGAGGGAAGACTGCAGAGTGATGGCAATGCGTCCTTGGTCTGGATCAG
 GGAGAAGTACACCTGCAGGTGGACCAGACTATACTGCCAGGCTTTGAGTTGCTGCTGCGCCACAGTCT
 CCGCAGAAGAGTCTAAGTGTCTGCACCCCAAGCTGGAGGAAGAAGTAGCTGAGACAGGAGAGGCGTCTG
 CTACACAGGAAGAGGTGGCCTCCCCGCAAGAGGATTACGAGGGTTTTGCACAGATCCTGGTCACGAGTC
 ATCCCATAGTATCCAAGAAGACAATATGCTAGTCTCTGAATCTGTGACCAAAAACCGAAGAGCAACTTTTC
 AAGGATAGCCAACCCATTGGCCTGTTGCTTACAGATGACAGCATGGATAAACAGTGCCTACCACAGACTC
 CACCTGAGCCTCAGAGCACCTCAGCTGCCAGAAGAGCCAGAGAGCAGTGAAGCCGGTTTTATTTCTCC
 TGAGGGTGCCAGGTGGAGACCTGCCCGCCAAGCAGTTAGATGTCCACAGCAGTCACTGCCCGTCTATA
 GCCCAGACCTCAGAGCCTGGAACCCAGCTCCCTGACCTGTCTGGGCTGCTCTGCAAGCCCTCTGGACCCAG
 CAGGAAGTCTCAAGCTGGGCCGACGCTACCGGTGTGGGAGTGTAGCAAGGCATTCCTACAGCTGTG
 CCATCTGAAGAAGCACGCGTTTGTGCACACAGACCACAAGCCTTTCTGTGCACCGAGTGTGGCAAGAGC
 TACAGCTCTGAGGAAAGCTTCAAAGGCCACATGCTGGCCACCGTGGTGTACGGCCCTCCCTTGCTCTC
 AGTGTGACAAGGCCTATGGTACCCGACAGACCTCAGGGAACATCAGGTGGTCCACTCAGGTGCCCGGCC
 CTTTGTGTGTGAGCAATGCGGCAAAACCTTTGCCCGCCGACCTTCCTGCGGCTACACCGAAAGACCCAC
 CAGATGCCAGATGCCCTTACCATGCCCATGCCAGTGTGTGGACGGCTCCTGGCCACCCGGGTTCC
 TGCGGAATCATGAGGCTCCACACTGGTGAAGAACCTACCTGTGCCCCACTGTGGCCAAGCATTCCG
 CCAGCGGGCAACCTCCAAGGACACTTGCAGGCTACACACAGGAGAGCGCCCTACCAGTGCCACATTGT
 GCCAATACTTACCCAGCTGCCTGAACTGCGGCGCCATCTCATCTCCACACTGGAGAGGCTACCTGT
 GCCCGTGTGTGGGAAGGCCCTGCGAGACCACATACACTCCGTGCTCATGAGCGCTACACTCAGGGGA
 GAGGCCCTTTCGCTGTCCCAAGTGTGACCGAGCTTACACACTGGCCACCAAGTTGCGCCGCCACCTCAAG
 TCCACATGACAGACAAGCCATACCAGTGCCCATCTGTGGCATGGGCTATGTTCTCCCTCACAGCCTCA
 AGCGGCACAGCTCAGTACCAGTGTGGGTTTTCATCCAGCCCTTCTCTGCCTCCTGCTGCCTCTGAGCC
 CCCTATGGTCTCCTCCAGAGTGAAGCCGAACTGCTGGACACTGTAGCCAACAGGAAGTCCCCCAGGT
 GAGGGTATTGTGGAGGTACCATCTCTGAAAGCCAGGAAAAGTGTCTTATAGTACCAGAGCAGCCAGCCC
 CTAGCCCGAGCCTGGTCTGATCCACAAGGACGTGGGCTTTCTGGCTGGGCCGAGGTGGTGAAGCAGA
 AGCAGGCACC

AGCGGACCGACGCGTACGCGGCCGCTCGAG - GFP Tag - GTTTAA

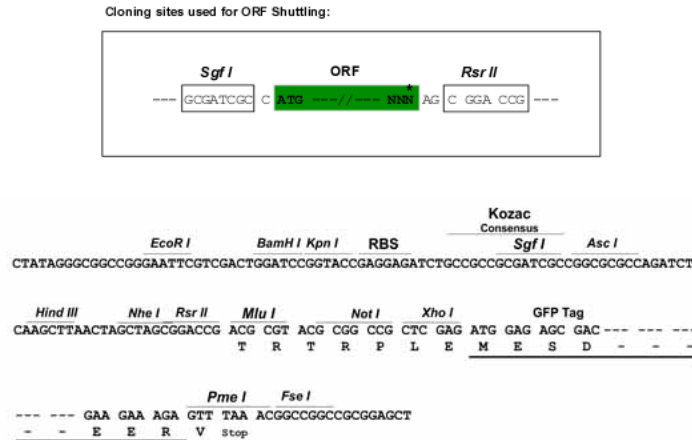
Protein Sequence: >MG214317 representing NM_001033451
 Red=Cloning site Green=Tags(s)

MKTPHEEDFSLAPCGAICPRQSSWTSLVQEGRLQSDGNASLVWIREKHLQVDQTLILPGFELLRLPQS
 PQKSLSVLHPKLEEEVAETGEASATQEEVASQEDSAGFCTDPGHESHSIQEDNMLVSESVTKTEEQLF
 KDSQPIGLLLHDDSMKQCLPQTPPEPQSTSAQKSPESSEAGLFPPEGAQVETCPAKQLDVPSSQCP
 SI AQTSEPGTQLPDL SGLLCSPLDPAGSSSKLGRYRCGEC SKAFLQLCHLKKHAFVHTDHPFLCTECGS
 YSSEESFKGHMLGHRGVRPFPCSQCDKAYGTRRDLREHQVVHSGARPFVCEQCKTFARRPSRLRHRKTH
 QMPDAPSPCPCVGRLLATRGLRNHMLHTGEKPYLCPHCGQAFRQGNLQGHRLRHTGERPYQCPHC
 ANTYPLPELRRHLISHTGEAYLCPVCGKALRDPHTLRAHERLHSGERPFRCPCQDRAYTLATKLRHLK
 SHMTDKPYQPCICMGYVLP HSLKRHQLSHQCGVSSPSLPPAAASEPPMVLQSEPELLDTCSSQEVPPG
 EGIVEVTISESQEKCFIVPEQPAPSPSLVLIHKDVGFRGWAEVVEAEAGT

SGPTRRRLE - GFP Tag - V

Restriction Sites: SgfI-RsrII

Cloning Scheme:



ACCN: NM_001033451

ORF Size: 1830 bp

OTI Disclaimer: The molecular sequence of this clone aligns with the gene accession number as a point of reference only. However, individual transcript sequences of the same gene can differ through naturally occurring variations (e.g. polymorphisms), each with its own valid existence. This clone is substantially in agreement with the reference, but a complete review of all prevailing variants is recommended prior to use. [More info](#)

OTI Annotation: This clone was engineered to express the complete ORF with an expression tag. Expression varies depending on the nature of the gene.

Components: The ORF clone is ion-exchange column purified and shipped in a 2D barcoded Matrix tube containing 10ug of transfection-ready, dried plasmid DNA (reconstitute with 100 ul of water).

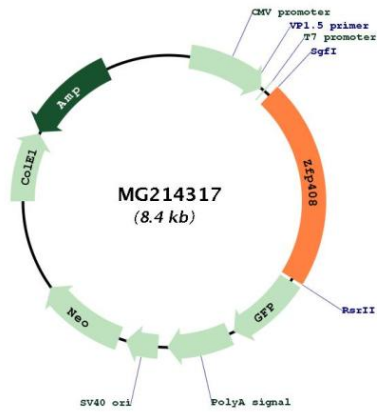
- Reconstitution Method:
1. Centrifuge at 5,000xg for 5min.
 2. Carefully open the tube and add 100ul of sterile water to dissolve the DNA.
 3. Close the tube and incubate for 10 minutes at room temperature.
 4. Briefly vortex the tube and then do a quick spin (less than 5000xg) to concentrate the liquid at the bottom.
 5. Store the suspended plasmid at -20°C. The DNA is stable for at least one year from date of shipping when stored at -20°C.

Note: Plasmids are not sterile. For experiments where strict sterility is required, filtration with 0.22um filter is required.

RefSeq: [NM_001033451.3](#)

RefSeq Size: 3740 bp
 RefSeq ORF: 1833 bp
 Locus ID: 381410
 Cytogenetics: 2 E1

Product images:



Circular map for MG214317