

Product datasheet for **MG214116**

Gm648 (NM_001033372) Mouse Tagged ORF Clone

Product data:

Product Type: Expression Plasmids
Product Name: Gm648 (NM_001033372) Mouse Tagged ORF Clone
Tag: TurboGFP
Symbol: Gm648
Mammalian Cell Selection: Neomycin
Vector: pCMV6-AC-GFP (PS100010)
E. coli Selection: Ampicillin (100 ug/mL)
ORF Nucleotide Sequence: >MG214116 representing NM_001033372
Red=Cloning site Blue=ORF Green=Tags(s)

TTTTGTAATACGACTCACTATAGGGCGGCCGGAATTCGTCGACTGGATCCGGTACCGAGGAGATCTGCC
GCC**CGATCGCC**

ATGCTGAAACGGAAAATTAGCCCTGTTGGAGAAGGAGAAGCCATGGGTCCAGCTAAGAAAAATTATACTC
TGGACATGGTGTACATAAATCTCTTGAAGCTTCAGCTGAGGCAAAGGGAGAAGGTGCTCTTGTAGCCA
GAAGGCCACAGTGGGGATGGTGGAGCGGATCCGAAAGTCTACGCACAGAAGTGTCTTCCAAACAGCTT
ATGCCTGTGACAGGAGAAGCCGTTCTCCCATGCCAGGAGATTCTCAGACTGAAGACTCTCTTCATCGCA
AGGATGGTGGCCACGACACAGTTGTGGGGGAAGTGTAAACAGTACTCCTCTGAAGCACTGCCAAGGC
TCCAGCAATGTCTTCATCAGAAGCTCAGCCCTATGTTTCCCTCACTGAGACCAAATTTGTCCAATTATGAA
ATAAAATGTGCCCTGATGACAGAAATCCGACGCTTTGGACGACAATACGGAAGGCTTTTCAAGATCCTTC
AAGAAGTGCAAGGACCTGTGGAAGTCAGGATTCAGTTTGTGCGAGTTCTCCATCAAGGAGCGGCAAGGTT
TAAAAGACGCCATTTAATCCAGTATCTGGAGAAGATACTGAAAAAATTAAGTCTGAAAGGTCTTCCAAC
AATGATGAG

ACGCGTACGCGGCCGCTCGAG - GFP Tag - GTTTAA

Protein Sequence: >MG214116 representing NM_001033372
Red=Cloning site Green=Tags(s)

MLKRKISPVGEGEAMGPAKKNYTLDMVSHKSLEASAEAKGEGALVSQKAQVGMVEADPKVYAQNCAKQQL
MPVTGEAVLPMPGDSQTEDSLHRKDGHDVVGGSVNSDSSEGTAKAPAMSSSEAPYVSSLRPNLSNYE
IKCALMTEIRRFGRQYGRLEFKILQEVQGPVEVRIQFVEFSIKEAARFKRRHLIQYLEKILEKLSERSSN
NDE

TRTRPLE - GFP Tag - V

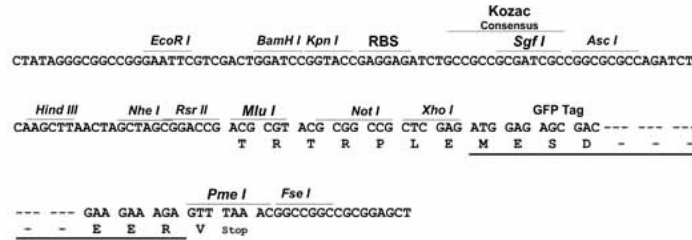
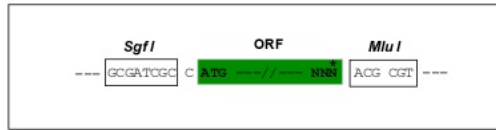


[View online »](#)

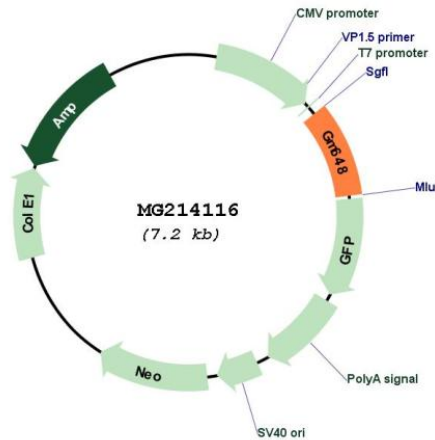
Restriction Sites: SgfI-MluI

Cloning Scheme:

Cloning sites used for ORF Shutting:



Plasmid Map:



ACCN: NM_001033372

ORF Size: 639 bp

OTI Disclaimer: The molecular sequence of this clone aligns with the gene accession number as a point of reference only. However, individual transcript sequences of the same gene can differ through naturally occurring variations (e.g. polymorphisms), each with its own valid existence. This clone is substantially in agreement with the reference, but a complete review of all prevailing variants is recommended prior to use. [More info](#)

OTI Annotation: This clone was engineered to express the complete ORF with an expression tag. Expression varies depending on the nature of the gene.

Components:	The ORF clone is ion-exchange column purified and shipped in a 2D barcoded Matrix tube containing 10ug of transfection-ready, dried plasmid DNA (reconstitute with 100 ul of water).
Reconstitution Method:	<ol style="list-style-type: none">1. Centrifuge at 5,000xg for 5min.2. Carefully open the tube and add 100ul of sterile water to dissolve the DNA.3. Close the tube and incubate for 10 minutes at room temperature.4. Briefly vortex the tube and then do a quick spin (less than 5000xg) to concentrate the liquid at the bottom.5. Store the suspended plasmid at -20°C. The DNA is stable for at least one year from date of shipping when stored at -20°C.
RefSeq:	<u>NM_001033372.2, NP_001028544.1</u>
RefSeq Size:	1040 bp
RefSeq ORF:	642 bp
Locus ID:	270599
Cytogenetics:	X A5