

Product datasheet for **MG214070**

NoI10 (NM_001008421) Mouse Tagged ORF Clone

Product data:

Product Type:	Expression Plasmids
Product Name:	NoI10 (NM_001008421) Mouse Tagged ORF Clone
Tag:	TurboGFP
Symbol:	NoI10
Synonyms:	Gm67
Mammalian Cell Selection:	Neomycin
Vector:	pCMV6-AC-GFP (PS100010)
E. coli Selection:	Ampicillin (100 ug/mL)



[View online »](#)

ORF Nucleotide Sequence:

>MG214070 representing NM_001008421
 Red=Cloning site Blue=ORF Green=Tags(s)

TTTTGTAATACGACTCACTATAGGGCGGCCGGGAATTCGTCGACTGGATCCGGTACCGAGGAGATCTGCC
 GCC**CGATCGCC**

ATGCAGGTCTCCAGCCTCAACGAAGTGAAGATTTACAGCCTCAGCTGCGCAAGTCTCTCCCGAGTGGC
 TTTCTGACAGGAAGAAGAGAGCACTGCAGAAGAAGAATGTCGATGTTTCGTAGGAGAATTGAACCTTATTCA
 GGACTTCGAAATGCCTACTGTGTGTAATACTCAAGGTGTCAAAAGATGGACAGTATATTTTAGCAACT
 GGAACATATAAGCCTCGGGTCCGGTGTTATGACACATATCAGTTATCCCTGAAGTTTGAAGGTGCTTGG
 ATTCTGAAGTTGTCACCTTTGAGATTTTATCAGATGACTATCAAAGATTGCTTCTTACATAATGACAG
 ATATATTGAATTTCACTCACAATCAGGCTTTACTACAAAACCAGAATCCCAAGTTCGGCCGAGACTTC
 TCTTACCACTATCCATCCTGTGACTTGTACTTTGTAGGTGCAAGCTCTGAAGTTTATAGATTAACCTTAG
 AACAAAGGGCGGTACCTGAATCCTCTCCAGACGGACGCCGGGAGAACAATGTTTGTGACATAAATGCAGT
 GCATGGCTTGTTCGCCACAGGAACAATAGAGGGTCGAGTGAATGCTGGGATCCAAGAGTAAAGAAAAGG
 GTTGGCGTGTAGACTGTGCATTAATAGTGTACAGCAGATTACAGATAAACAGCTTACCCACCATCT
 CTGCATTGAAGTTAATGGAGCCTTGAGCATGGCAGTTGGAACATCCACAGGGCAGGTGTTGTTATATGA
 TCTTCGCTCGGATAAGCCGTTGCTAGTTAAGGATCACCAGTATGGGCTGCCGATTAAGTCAGTTCATTTT
 CAGGATTCCTAGATTTGGTTTTGTCTGCAGACTCTAGAATTGTCAAAATGTGGAACAAGGACTCCGGGA
 AAATATTTACTTCGTTGGAGCCAGAACATGATCTTAATGATGTTTGCCTCTATCCAGCTCAGGAATGCT
 TCTTACTGCCAATGAATCCCCAAGATGGGCATTTACTACATTCGGTTTTGGTCTCTCCAGGTGG
 TGTTCCCTCCTGGACAACCTTGACAGAAGAGTTAGAAGAGAATCCAGAGAGCACAGTGTATGATGATTACA
 AATTTGTCACCAAGAAAGACCTTGAAAATTTAGGGCTCACACATCTCATTGGATCACCTTCTCCGAGC
 ATATATGCATGGGTTTTTCATGGATATCAGACTCTACCACAAGGTGAAATTGATGGTCAATCCATTTGCT
 TATGAAGAATATAGGAAAAGATAAAATTCGACAGAAGATAGAAGAAACACGTGCACAGAGAGTCCAATTAA
 AGAAACTGCCAAAAGTTAACAAAGAACTGGCACTTAAATTAATTGAAGAGGAAGAGGAGAAAACAAAAGTC
 TACGCTGAAAAAGAAAGTTAAGAGCCTCCCTAATATCCTCACGGATGATCGATTTAAAGTTATGTTTGGAG
 AATCCCGACTTCCAGGTGGACGAGGAGAGTGAAGAGTTCAGGCTTCTCAACCCCTCGTCTCGAGGATCA
 GTGAGAAGAGGAAGAAGCAGCTGAGGCTCTTGGAGCAGCAGGAGCTCAAGGATGAAGAGGAGGAAGAACC
 GGAAGGAAAACCCAGTGTGCAGAAAAGTTCAGAGAGCTCAGATGATGAGAAAGTTGGGTTGAAGAAGTC
 AGAAGCAGCGCAGACTCCTTCAGCAGGAAGAAAGAGTGAAGCGCAGGAGCAACTGAAGGAGGACCAGC
 AGACAGTCTGAAGCCCCAGTTCTACGAGATCAAAGCAGGCGAAGAGTTCAGGAGCTTCAAAGAGTCTGC
 CACCAAGCAGAGACTAATGAACAAAACCTGGAAGATCGTTTGAACCTGAAGCAAAACATGGGACATTG
 AATGTATCGGACACCCTGTTGGCAGCAAGCAGTTGACATTTACTCTCAAGAGGTCTGAACAGCAAAAAGA
 AGCAACAGGAGGCTGAAAACCTGCATCGTCAGGAAAGGAAAAATCTGCGCAGGTCCGCCAGCCACCTGAG
 GTCCAGACCCAGAAGAGGCCGCCCTTTTAC

ACGCGTACGCGGCCGCTCGAG - GFP Tag - GTTTAA

Protein Sequence: >MG214070 representing NM_001008421
 Red=Cloning site Green=Tags(s)

MQVSSLNEVKIYSLSCGKSLPEWLSDRKKRALQKKNVDVRRRIELIQDFEMPTVCTTIKVSKDGGQYILAT
 GTYKPRVRCYDITYQLSLKFERCLDSEVVTFEILSDDYSKIVFLHNDRYIEFHSSQSGFYKTRIPKFGDRDF
 SYHYPSCDLYFVGASSEVYRLNLEQGRYLNPLQTDAAENNVCDINAVHGLFATGTIEGRVECWDPRVRKR
 VGVLDICALNSVTADSEINSLPTISALKFNGALSMVGTSTGQVLLYDLRSDKPLLVKDHQYGLPIKSVHF
 QDSLDELVLSADSRIVKMWNKDSGKIFTSLEPEHDLNDVCLYPSSGMLLTANESPKMGIYYIPVLGPAPRW
 CSFLDNLTEELEENPESTVYDDYKVFVTKKDLLENLGLTHLIGSPFLRAYMHGFFMDIRLYHKVCLMVNPF
 YEEYRKDKIRQKIEETRAQRVQLKPKVKNELALKLEIEEEEEKQKSTLKKKVKSLPNILTDDRFKVMFE
 NPDPQVDEESEEFRLNPLVSRISEKRKQLRLLQEQELKDEEEEEPEGKPSDAESSESSDDEKGWVEEV
 RKQRLLQQEERVKRQELKEDQQTVLKPFYEIKAGEEFRSFKESATKQRLMNKLTEDRLKLEAKHGTL
 NVSDTTVGSKQLTFTLKRSEQQKQQAELKLRQERKNLRRSASHLRSRPRRGRPFH

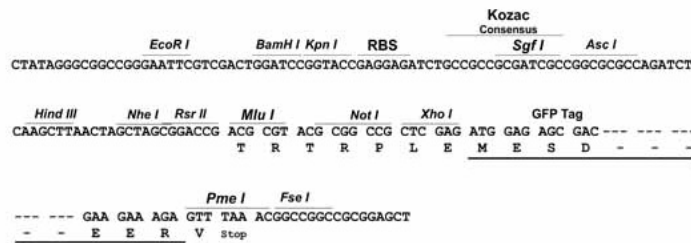
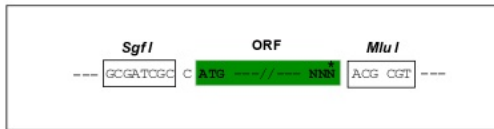
TRTRPLE - GFP Tag - V

Restriction Sites:

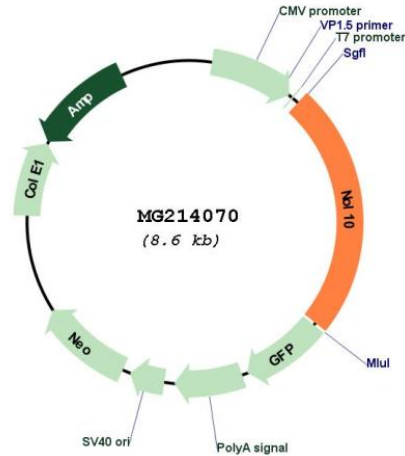
SgfI-MluI

Cloning Scheme:

Cloning sites used for ORF Shuttling:



Plasmid Map:



ACCN: NM_001008421

ORF Size: 2061 bp

OTI Disclaimer: The molecular sequence of this clone aligns with the gene accession number as a point of reference only. However, individual transcript sequences of the same gene can differ through naturally occurring variations (e.g. polymorphisms), each with its own valid existence. This clone is substantially in agreement with the reference, but a complete review of all prevailing variants is recommended prior to use. [More info](#)

OTI Annotation: This clone was engineered to express the complete ORF with an expression tag. Expression varies depending on the nature of the gene.

Components: The ORF clone is ion-exchange column purified and shipped in a 2D barcoded Matrix tube containing 10ug of transfection-ready, dried plasmid DNA (reconstitute with 100 ul of water).

Reconstitution Method:

1. Centrifuge at 5,000xg for 5min.
2. Carefully open the tube and add 100ul of sterile water to dissolve the DNA.
3. Close the tube and incubate for 10 minutes at room temperature.
4. Briefly vortex the tube and then do a quick spin (less than 5000xg) to concentrate the liquid at the bottom.
5. Store the suspended plasmid at -20°C. The DNA is stable for at least one year from date of shipping when stored at -20°C.

RefSeq: [NM_001008421.1](#), [NP_001008421.1](#)

RefSeq Size: 3004 bp

RefSeq ORF: 2064 bp
Locus ID: 217431
UniProt ID: Q5RIG1
Cytogenetics: 12 A1.1