

Product datasheet for **MG213974**

Pdp2 (NM_001024606) Mouse Tagged ORF Clone

Product data:

Product Type:	Expression Plasmids
Product Name:	Pdp2 (NM_001024606) Mouse Tagged ORF Clone
Tag:	TurboGFP
Symbol:	Pdp2
Synonyms:	4833426J09Rik; Gm1705; mKIAA1348
Mammalian Cell Selection:	Neomycin
Vector:	pCMV6-AC-GFP (PS100010)
E. coli Selection:	Ampicillin (100 ug/mL)



[View online »](#)

ORF Nucleotide Sequence:

>MG213974 representing NM_001024606
 Red=Cloning site Blue=ORF Green=Tags(s)

TTTTGTAATACGACTCACTATAGGGCGGCCGGAATTCGTCGACTGGATCCGGTACCGAGGAGATCTGCC
 GCC**GCGATCGCC**

ATGTCAAGTACTGTGTCCTACTGGATCTTCAATTCTGCAAGGAATCGTATTGCTCTTTACGAGGTGGGA
 GACGCCTATACTCAAGGGCTGCCACGAGTAGGAACCTGCTGAAGTGGAGGCCCTTTCTCCGGCATTGGC
 ATCATCAGCCCTCAAGTGTGGTTCTCCACCTGGTGGCTTTGCCCTGCGGAAAGCCTACAGACACACATCA
 ACCGAGGAAGAGGATTTCCACCTACAGCTCAGCCCCGAACAGGTCACTGACCTGCTCCGAGCTGGCGAGT
 CATCCCACAAGGTCCTTGATTTCAACAACGGAGTACCAAATTCAGTGTTAAGGTTGAGAGCAACCAGCT
 GGCTGCCAATTCCTGTGGAGGACCGCAAGGTGTGGCTACCTGCGTCCAAACGAATGGGATGATGTTCC
 GGTATTTTGGTACGACGGGGCCACGCGTGTGCGCAAGCGGTGAGTGAGAGGCTTTTCTACTACATGG
 CGGTGTCCTGATGTCATCAGACCTTGAGCAGATGGAGGAAGCAACGGAAAACATGAAGCCTTTGCT
 GCCCATCTGCGTTGGCTCAAGCACCCCGAGATAGTATTTATAAGGACGTCACGTCCTGTCATCTGGAC
 CACCTCCGTGTCTATTGGCAGGAGCTCCTTGACCTGCATATGAAATGGGGCTGAGCATTGAAGAAGCAT
 TGATGACTCCTTCCAGAGACTGGATTCTGACATCTCGCTAGAAATCCAGGCTCCTCTGGAAGATGAGGT
 AACGAGAACTTATCCCTCCAGGTTGCTTTCTCTGGGGCAACAGCCTGCATGGCCACGTCATGGAGTT
 CACCTGCATGTAGCAAATGCTGGTACTGCCGGCTATCCTCGGTGTCCAGGAAGAAAACGGTGCCTGGT
 CATGTTTACCTCTTACCTGTGACCACAACGCTGGAATGAGGCTGAGCTGTCCCGGCTTAAAGAGGGAACA
 CCCCAGTCCGAGGACAGGACTCATATAGACGACAGGCTTCTGGGTGCTCATGCCCTGCAGGGCC
 TTCGGGGATGCCAGCTAAAGTGGAGCAAAGAGCTGCAGCGGAATGTCTCGCAAGGGGCTTTGATACGG
 AGGCCCTCAACATCTACCAGTTTACCCCGCCCACTACTACACTCCACCCTACCTGACTGCCAAACCTGA
 GTTTACCTACCACAGGCTAAGGCCAGGATAAGTTCTGGTGTGCGCTCAGATGGCCTGTGGGACATG
 CTGGGGAATGAGGACGTGGTGGGCTGGTGGTGGGACCTGTCCAAGGTGGGTCGCCATAGCCGGACC
 TGGACCAAAGACCAGCCAACCTAGGCTCATGCAGAGCCTGCTGCTGCAGAGGAAAGCCAGTGGACTCCA
 TGCGGCTGACCAGAACACAGCCACGCATCTGATCAGACACGCCATCGGGAGCAACGAGTACGGGAGATG
 GAGCCGGAGCGGCTGGCTGCCATGCTGACACTGCCAGAGGATGTGGCCAGGATGTACCGGATGATATCA
 CTGTCATGGTGGTGTTTTTAACTCTGATTCAATTGATACCTACTGTAAGAGGGT

AG**CGGACCG**ACGCGTACGCGGCCGCTCGAG - GFP Tag - GTTAA

Protein Sequence:

>MG213974 representing NM_001024606
 Red=Cloning site Green=Tags(s)

MSSTVSYWIFNSARNRIALLRGGRRLYSRAATSRNLLKWRPFSPALASSALKCGSPPGGFALRKAYRHTS
 TEEEDFHLQLSPEQVSDLLRAGESSHKVLDFNNGVPSVLRFSNQLAANSPVEDRQGVATCVQTNGMMF
 GIFDGHGHACAQAVSERLFYMAVSLMSHTLEQMEEATENMKPLLPIRLWLKHPGDSIYKDVTSVHLD
 HLRVYWQELLDLHMEMGLSIEEALMYSFQRLDSISLEIQAPLEDEVTRNLSLQVAFSGATACMAHVNGV
 HLHVANAGDCRAILGVQEENGAWSCLPLTCDHNAWNEAELSRKREHPESDRTLIIIDRLLGVLMP CRA
 FGDVQLKWSKELQRNVLARGFDTEALNIYQFTPPHYTPPYLAKPEVYHRLRRQDKFLVLASDGLWDM
 LGNEDVVRLVVGHLKSVGRHKPDLQRPANLGLMQSLLLQRKASGLHAADQNTATHLIRHAIGSNEYGEM
 EPERLAAMLTLPEDEVARMYRDDITVMVVFNSDSIDTYCKEG

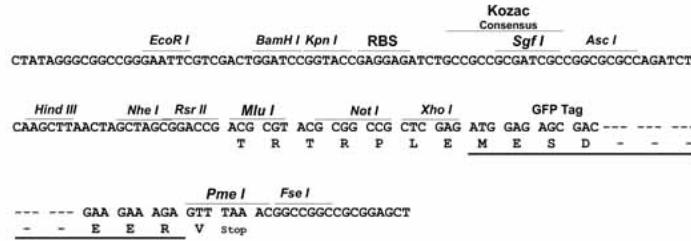
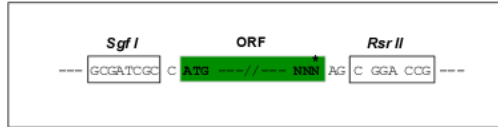
SGP**TRRRLE** - GFP Tag - V

Restriction Sites:

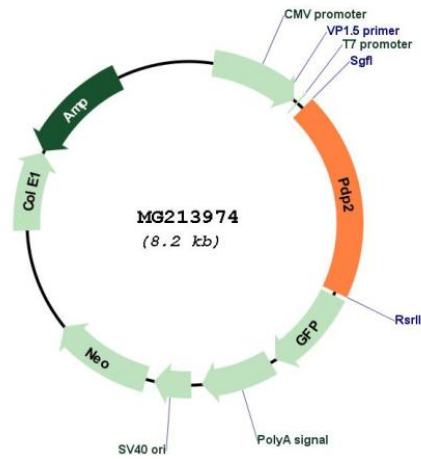
Sgfl-RsrII

Cloning Scheme:

Cloning sites used for ORF Shuttling:



Plasmid Map:



ACCN:	NM_001024606
ORF Size:	1596 bp
OTI Disclaimer:	The molecular sequence of this clone aligns with the gene accession number as a point of reference only. However, individual transcript sequences of the same gene can differ through naturally occurring variations (e.g. polymorphisms), each with its own valid existence. This clone is substantially in agreement with the reference, but a complete review of all prevailing variants is recommended prior to use. More info
OTI Annotation:	This clone was engineered to express the complete ORF with an expression tag. Expression varies depending on the nature of the gene.
Components:	The ORF clone is ion-exchange column purified and shipped in a 2D barcoded Matrix tube containing 10ug of transfection-ready, dried plasmid DNA (reconstitute with 100 ul of water).
Reconstitution Method:	<ol style="list-style-type: none">1. Centrifuge at 5,000xg for 5min.2. Carefully open the tube and add 100ul of sterile water to dissolve the DNA.3. Close the tube and incubate for 10 minutes at room temperature.4. Briefly vortex the tube and then do a quick spin (less than 5000xg) to concentrate the liquid at the bottom.5. Store the suspended plasmid at -20°C. The DNA is stable for at least one year from date of shipping when stored at -20°C.
RefSeq:	NM_001024606.2
RefSeq Size:	3514 bp
RefSeq ORF:	1599 bp
Locus ID:	382051
Cytogenetics:	8 D3