

Product datasheet for **MG213950**

Klh15 (NM_001039061) Mouse Tagged ORF Clone

Product data:

Product Type:	Expression Plasmids
Product Name:	Klh15 (NM_001039061) Mouse Tagged ORF Clone
Tag:	TurboGFP
Symbol:	Klh15
Synonyms:	6330500C13Rik
Mammalian Cell Selection:	Neomycin
Vector:	pCMV6-AC-GFP (PS100010)
E. coli Selection:	Ampicillin (100 ug/mL)



[View online »](#)

ORF Nucleotide Sequence:

>MG213950 representing NM_001039061
 Red=Cloning site Blue=ORF Green=Tags(s)

TTTTGTAATACGACTCACTATAGGGCGGCCGGAATTCGTCGACTGGATCCGGTACCGAGGAGATCTGCC
 GCC**CGCATCGCC**

ATGGCAGGGGACGTGGAAGGATTCTGTTCTCCATCCATGACACCAGTGTCTCTGCTGGTTTCAGAGCAC
 TGTATGAGGAGGATTGCTTCTCGATGTCACTCTGGTTATTGAAGACCATCAGTTCCAGGCCATAAAGC
 TCTCTTGCCACCCAGAGTGATTACTTCAAGATTATGTTACAGCAGACATGAGGGAACGAGATCAGGAC
 AAAATTCAATTTGAAAGGTCTAACAGCTACTGGTTTCAGCCACGTTCTTCAGTTTATGATTATGAACTA
 TAGAACTAAGTATGAACACTGTACATGAAATCCTTCAGGCAGCAATGTATGTTCCAGCTTATAGAAGTGGT
 GAAATTCTGCTGCTCCTTCTCTAGCCAAAATCTGCTTAGAAAATTGTGCGGAAATTATGAGACTGTTA
 GATGATTTCCGGTGTAAACATCGAGGGAGTCAGGGAGAAGCTGGATGCCTTCTGCTAGACAACTTCGTGC
 CACTAATGTCCAGGCCTGACTTTTTGTCTTATCTGAGCTTCGAGAAGCTCATGTCTTATTTGGATAATGA
 CCATCTGAGCAGTTTTCCAGAAATTGAGCTGTACGAGGCTGTGCAGTCTTGGCTGCGACATGATAGACGA
 CCGTGGAGACACACAGATACCATCATTCAAGAACATCAGGTTTTGTCTGATGACTCCATCCAGCGTCTTTG
 AGAAGGTTAAAACATCAGAATTTATAGATACTCCCGACAGCTCCGATATGAAGTTGACCAAGCATTGAA
 TTACTTCCAAAATGTTCCACCAGCAGCCCTTGTGGACATGAAATCAAGCCGATTCGTTCTGCCAAAACC
 CAAACTACAGTATTCGAGGAATGATTGGACATAGCATGGTTAATAGCAAAAATACTTCTGTTAAAAAAAC
 CAAGAGTCTGGTGGAACTGGAGGGCCCCAAGTACCTTAAGGCCAGACTGCCTTGCTATTGTCAATAA
 TTTTGTATTCTGCTAGGTGGAGAAGAACTGGCCCTGATGGTGAATCCATGCCTTCCGAAAGTGTTC
 AGGTATGATCCAAGACAAAATCTTGGCTGCGTATGCCAGACATGTCTGTACCCCGTTCAAGATTTGCTG
 TTGGTATTATTGGAAAGTTTATTTATGCTGTAGCAGGCAGAACAAAGAGATGAAACTTTCTACTCAACAGA
 AAGATATGATATCACTAATGATAAATGGGAATTTGTAGATCCTTATCCAGTTAACAAATATGGACATGAG
 GGGACAGTGCTCAATAACAAGTTGTTTACTGACTGGAGGAATTACTTCATCTTCCACATCTAACAGGTGT
 GTGTGTTTGACCCAGTAAAGAAGGGACTATAGAGCAGCGGACCAGGAGAACGCAAGTAGTCACCAACTG
 CTGGGAGAATAAGAGCAAGATGAATTATGCCAGATGTTTTTACAAGATGATCTCTTACAACGGCAAGCTT
 TATGTCTTTGGTGGTGTCTGTGTGATCTTGAGGCCTCTTTTGAATCTCAGGGCTGCCCTCCACAGAGG
 TGTACAACCCAGATACCGATCAGTGGACCATCTTGGCCTCCATGCCAATTGGTAGAAGTGGTCATGGTGT
 GACTGTGCTGGACAAACAGATAATGGTCTTGGAGGCCTTTGTTATAATGGTCATTACAGTGATTCCATT
 CTCACCTTTGACCCAGATGAAAATAAGTGGAAAGAAGATGAGTACCCTCGGATGCCCTGCAAGCTGGATG
 GTTTACAGGTGTGCAACCTACATTTCCGGACTATGACTGGATGAGGTTAGGCGTTGCAAC

ACGCGTACGCGGCCGCTCGAG - GFP Tag - GTTTAA

Protein Sequence:

>MG213950 representing NM_001039061
 Red=Cloning site Green=Tags(s)

MAGDVEGFCSSIHDTSVSAGFRALYEEGLLLDVTLVIEDHQFQAHKALLATQSDYFRIMFTADMRRERDQD
 KIHKLKGLTATGFSHVLQFMYYGTEIELSMNTVHEILQAAMYVQLIEVVKFCCSFLAKICLENCAEIMRLL
 DDFGVNIEGVREKLDAFLLDNFVPLMSRPDLSYLSFEKLMSYLDNDHLSRFPEIELYEAQSWLRHDDR
 RWRHTDTIIQNIRFCLMTPSSVFEKVKTSEFYRYSRQLRYEVDQALNYFQNVHQQLLDMKSSRIRSAKP
 QTTVFRGMIGHSMVNSKILLKKPRVWWELEGPVPLRPDCLAIVNNFVFLGGEELGPDGEFHASSKVF
 RYDPRQNSWLRMADMSVPRSEFVAVGVIKFIYAVAGRTRDETFFSTERYDITNDKWEFVDPYPVVKYGHE
 GTVLNNKLFITGGITSSSTSKQVCVFDPSKEGTIEQRTRRTQVVTNCWENKSKMNYARCFHKMISYNGKL
 YVFGGVCVILRASFSQGPCSTEVYNPDTDQWTILASMPIGRSGHGVTVLQKQIMVLGGLCYNGHYSDSI
 LTFDPDENKWKEDYPRMPCKLDGLQVCNLHFPDYVLDVVRRCN

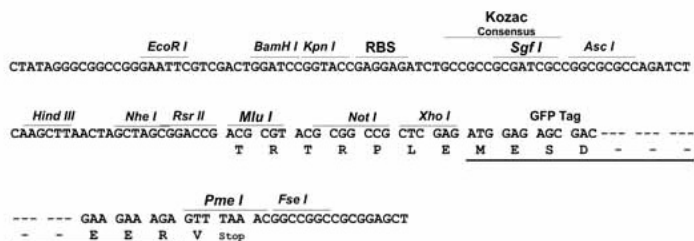
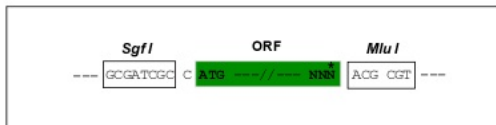
TRTRPLE - GFP Tag - V

Restriction Sites:

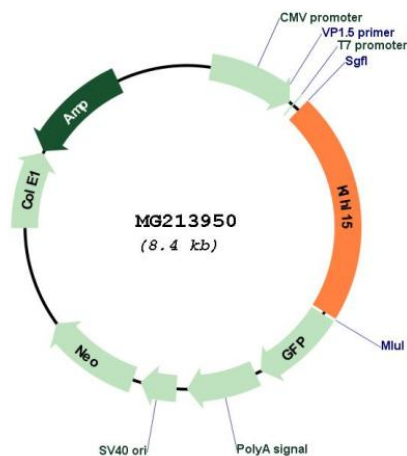
SgfI-MluI

Cloning Scheme:

Cloning sites used for ORF Shutting:



Plasmid Map:



ACCN: NM_001039061
 ORF Size: 1812 bp

OTI Disclaimer:	The molecular sequence of this clone aligns with the gene accession number as a point of reference only. However, individual transcript sequences of the same gene can differ through naturally occurring variations (e.g. polymorphisms), each with its own valid existence. This clone is substantially in agreement with the reference, but a complete review of all prevailing variants is recommended prior to use. More info
OTI Annotation:	This clone was engineered to express the complete ORF with an expression tag. Expression varies depending on the nature of the gene.
Components:	The ORF clone is ion-exchange column purified and shipped in a 2D barcoded Matrix tube containing 10ug of transfection-ready, dried plasmid DNA (reconstitute with 100 ul of water).
Reconstitution Method:	<ol style="list-style-type: none">1. Centrifuge at 5,000xg for 5min.2. Carefully open the tube and add 100ul of sterile water to dissolve the DNA.3. Close the tube and incubate for 10 minutes at room temperature.4. Briefly vortex the tube and then do a quick spin (less than 5000xg) to concentrate the liquid at the bottom.5. Store the suspended plasmid at -20°C. The DNA is stable for at least one year from date of shipping when stored at -20°C.
RefSeq:	NM_001039061.1 , NP_001034150.1
RefSeq Size:	2363 bp
RefSeq ORF:	1815 bp
Locus ID:	236904
UniProt ID:	A2AAX3
Cytogenetics:	X C3
Gene Summary:	Substrate-specific adapter for CUL3 E3 ubiquitin-protein ligase complex. Acts as an adapter for CUL3 to target the serine/threonine-protein phosphatase 2A (PP2A) subunit PPP2R5B for ubiquitination and subsequent proteasomal degradation, thus promoting exchange with other regulatory subunits and regulating PP2A holoenzyme composition. Acts as an adapter for CUL3 to target the DNA-end resection factor RBBP8/CtIP for ubiquitination and subsequent proteasomal degradation. Through the regulation of RBBP8/CtIP protein turnover, plays a key role in DNA damage response, favoring DNA double-strand repair through error-prone non-homologous end joining (NHEJ) over error-free, RBBP8-mediated homologous recombination (HR).[UniProtKB/Swiss-Prot Function]