

## Product datasheet for **MG213936**

### Fndc10 (NM\_178699) Mouse Tagged ORF Clone

#### Product data:

**Product Type:** Expression Plasmids  
**Product Name:** Fndc10 (NM\_178699) Mouse Tagged ORF Clone  
**Tag:** TurboGFP  
**Symbol:** Fndc10  
**Synonyms:** B930041F14Rik; MNCb-3966  
**Mammalian Cell Selection:** Neomycin  
**Vector:** pCMV6-AC-GFP (PS100010)  
**E. coli Selection:** Ampicillin (100 ug/mL)  
**ORF Nucleotide Sequence:** >MG213936 representing NM\_178699  
Red=Cloning site Blue=ORF Green=Tags(s)

GCCGGGAATTCGTCGACTGGATCCGGTACCGAGGAGATCTGCCGCCGGATCGCCGGCCGCCAGATCTCAAGCTTAACTAGCTAGCGGACCGAC

ATGCGCGCTCCGCCGCTGCTGCTGCTGCTGGCTGCATGCGCGCCACCGTCAGGCGCCGCTGTGGACCGA  
 CGCCGCCGGCTGGGAGCCGGCCCCGACGCGCCCTGGTGCCCTACAAGGTGCTGTCCGAGGGCCAGA  
 GACGGCGGTGGGCGCTGTGCTTTCGACGCCCGTTCCGGGTTTCCGCTGCCAGACGCCGGCTGCGAA  
 ACGTTGGCTCGCGGGTGGCTCGTGCAGCGCCACGTCCTGCGCAATCGCAGCGTGTGCTGCAGTGGC  
 GCCTGGCTCCTGCAGAGCGCGCCGCTGCGCGTCTTCGCGTAAACTGCTCGTGGCGTGGCACCTATAC  
 GCGCTTCCCTTGCATCGCGTCTTTGGGTGCCTCTTCCCGGACTACCTGCTACCGGACGTGCACGAC  
 AGCGTGCCTACCGCTTGTGCCTGCAGCAGCTGCCGCTGCGCGCCGAGGTCGCCGTCGTCGCCAGAGC  
 TGGCCGAGTGCCTGGAGTTCACCGCCGAACCGCAGCTATGCAGGAGATCGTGGTGGCCATGACGGCGGT  
 AGGCGGCTCCATCTGTGTATGCTGGTGGTCTGCTGCTGGTGGCCTACATCACCGAGAACCTCATG  
 CACCCGACCTTCCGGCGACCCAGTCTGCGCAGGCAGCCC

ACGCGTACGCGCCGCTCGAG - GFP Tag - GTTTAA

**Protein Sequence:** >MG213936 representing NM\_178699  
Red=Cloning site Green=Tags(s)

MRAPLLLLLAAACAPPSGAAVDPTPPGWEPAPDAPWCPYKVLSEGPETGGGRLCFRSPVRGFRQCPTPGCE  
 TLASAGGSLRAHVLNRVLLQWRLAPAEARRVRFALNCSWRGTYTRFPDCDRVLLGASCRDYLLPDVHD  
 SVRYRLCLQLPLRAEVAVVPELAECVEFTAEPAAQEIIVAMTAVGGISICVMLVVICLLVAYITENLM  
 HPTFRRPSLRRQP

TRTRPLE - GFP Tag - V

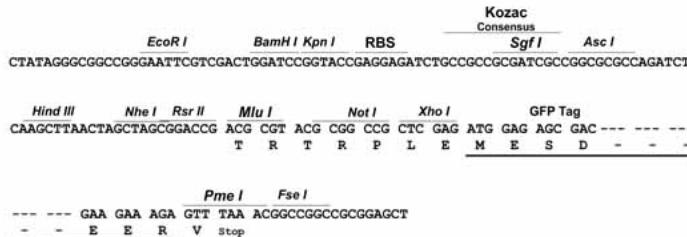
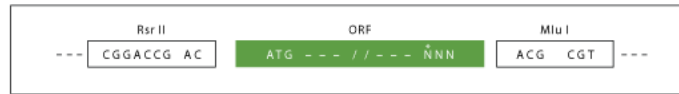


[View online »](#)

Restriction Sites: RsrII-MluI

Cloning Scheme:

Cloning sites used for ORF Shuttling:



ACCN: NM\_178699

ORF Size: 669 bp

OTI Disclaimer: The molecular sequence of this clone aligns with the gene accession number as a point of reference only. However, individual transcript sequences of the same gene can differ through naturally occurring variations (e.g. polymorphisms), each with its own valid existence. This clone is substantially in agreement with the reference, but a complete review of all prevailing variants is recommended prior to use. [More info](#)

OTI Annotation: This clone was engineered to express the complete ORF with an expression tag. Expression varies depending on the nature of the gene.

Components: The ORF clone is ion-exchange column purified and shipped in a 2D barcoded Matrix tube containing 10ug of transfection-ready, dried plasmid DNA (reconstitute with 100 ul of water).

- Reconstitution Method:
1. Centrifuge at 5,000xg for 5min.
  2. Carefully open the tube and add 100ul of sterile water to dissolve the DNA.
  3. Close the tube and incubate for 10 minutes at room temperature.
  4. Briefly vortex the tube and then do a quick spin (less than 5000xg) to concentrate the liquid at the bottom.
  5. Store the suspended plasmid at -20°C. The DNA is stable for at least one year from date of shipping when stored at -20°C.

RefSeq: [NM\\_178699.4](#), [NP\\_848814.3](#)

RefSeq Size: 2169 bp

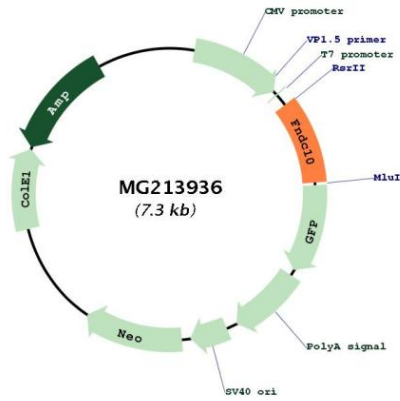
RefSeq ORF: 672 bp

Locus ID: 230991

UniProt ID: [A2A9Q0](#)

Cytogenetics: 4 E2

Product images:



Circular map for MG213936