

Product datasheet for **MG213908**

Pcdhb8 (NM_053133) Mouse Tagged ORF Clone

Product data:

Product Type:	Expression Plasmids
Product Name:	Pcdhb8 (NM_053133) Mouse Tagged ORF Clone
Tag:	TurboGFP
Symbol:	Pcdhb8
Synonyms:	Pcdhb5C; PcdhbH
Mammalian Cell Selection:	Neomycin
Vector:	pCMV6-AC-GFP (PS100010)
E. coli Selection:	Ampicillin (100 ug/mL)



[View online »](#)

ORF Nucleotide Sequence:

>MG213908 representing NM_053133
 Red=Cloning site Blue=ORF Green=Tags(s)

TTTTGTAATACGACTCACTATAGGGCGGCCGGGAATTCGTCGACTGGATCCGGTACCGAGGAGATCTGCC
 GCC**CGGATCGCC**

ATGGAGACAGCGCTAACAAAAACGCCAGAGAAAAGGCAAGTCATTTTCCTTGCTATATTGTGCTTTTGT
 GGGAGGCTAGTTCTGAGGCAATTAGCTATTCCATGCCAGAAGAAACGGAGAGTGGCTACTTGGTGGCTAA
 CCTGGCACAAGATCTGGGGCTCAGGGTTGGGAACTGACCACTAGAGGGGCACGAATCCATCACAATGGT
 AACAAAGAGCTCTTGAGCTTGTGAGAGAGAGGGAATTTGCTCCTGAAGGAAAAACCAGATCGCGAAG
 CACTGTGTGGGGCAGAGAACCCTGTGTGCTGCACTTCCAGATCATACTAGAAAACCCTGTGCAATTCTT
 TCAAACAGACTTGCACTTACAGATATAAACGACCATTTCCAGAGTTCCCTGACACAGAAATGCTCCTA
 AAAATTCAAGAAATTGCCAGCCAGGGACTGTGTTTCTCTGAAGGCAGCTCAGGACCCTGACATAGGGA
 GCAACGCTGTTCCAGAACTACACAGTCAGTCCCAACCTCCATTTCCATGTCGTTACTCTCAGTCGCTCAGA
 TGACAGGAAATACCCAGAGCTGGTGTGGACAGAGCCCTGGACAGGGAGGAGCAGCTGAACTCACTTTA
 ATCCTCACTGCTCTGGATGGCGGAGCTCCACCCAAGTCTGGGACAACCACTGTTCCGATTGAAGTCGTGG
 ACATCAATGATAATGCCCCCAAGTTCTTACAGTCACTCTATGCGGTGGAGGTCCCTGAGAACAGTCCCT
 CAATGCCTTAGTTGCTACTGTCTCTGCCAGGGATTTAGATGCTGGGATACATGGCAATGTAGCCTACTCT
 CTGTTTCAAGCGGGGGAGGTCTCAGCCATTTGTAATAGATGAAATCACAGGAGAAATTCGACTTAAAG
 GGGCATTGGATTTTGAAGCAACTTCACTATAACCATGAAATTTAGCCACAGACAGTGGTGGTCTTTT
 AGGAAATGCACTGTAGCTATCCAGGTGTTGGATGTGAACGACAATGCCCTAAACTCACCATATCTTCC
 CTCCTAGTTCCATCCCAGAAAATGCTCCGAGGCTGTAGTTGCTGTTTTCAAGTCTCTGACCCAGATT
 CGGGGGACAATGGAAGGATGGTGTGTTCAATTCAGAACGACTTCCATTTCTTTTAAACCCACACTCAA
 GAATTTTACACCTTAGTCACGGAGAGACCCCTGGATAGAGAGAGCAACGCTGAGTACAACATCACAATC
 ACGGTCTCTGACCTGGGCACACCAGGCTCACAACCCAGCACACCATAACAGTGCAGTGTCCGACATCA
 ACGATAATGCTCCTGCCTTCACTCAAACCTCTTACACCTTGTGTTTGTTCACGAGAACAACAGCCCTGCCCT
 GCACATAGGCACCATCAGCGCCACAGACTCAGACTCTGGCTCCAATGGCCTTATTATCTACTCGTTGCTG
 CCGCCCCATGACCAGCAGCTGGGCCTTGCTCGCTGATCTCCATCAACTCAGACAACGGGCAGCTGTTT
 CGCTCAGGGCGCTGGACTACGAGGCCCTGCAGGCCTTCGAGTTCCACGTGGGCGCCACAGACAGAGGCTC
 GCCCGGCTCAGCTCAGAGGCTCTGGTGCCTGTAGTGGTCTGGATGACAATGACAATGCGCCCTTCGTG
 CTCTACCCACTGCAAAACGCTTCTGCGCCCTGCACTGAGCTGCTGCCAGGGCTGCGGAGCCTGGCTACC
 TGATACCAAGGTGGTGGCAGTGGACCCGACTCTGGCCAGAATGCCTGGCTGTCATTCCAGCTGCTCAA
 GGCCACAGAGCCCGGGCTGTTACAGCTGTGGGCGCACAATGGCGAAGTGGCACCACCAGGCTGCTGAGC
 GAGCGAGATGCACCAAGCACAGGCTGCTGCTGCTGGTCAAGGACAATGGAGAGCCTCTGCGCTCTGCTA
 GTGTATGCTGCAGGTGCTAGTGGTGGATGGCTTCTCTCAGCCCTACCTGCCTCTGCCAGAGGTGGCGCT
 CAACCCACACAGGAAGAAGACATGCTCACTCTATCTGTTTATTGCCTTGGCTTCTGTGCTTCACTT
 TTCTCTTGTCTGTGCTGCTGTTTGTGGGGTGAAGTTGTGCAAGAAGGCCAGGGAGGCTTCTCTGGCTG
 ACTGCTTATTCTGAGGGACACTTTCTAGCCACTTGGTGGATGTCAGTGGTGGGGACCTTATCCCA
 GAGTTACCATTATGAGGTCTGTCTGACTGAGGACTCTGGGACCTCAGATTTCAAGTTCATGAACCCATT
 ATTCTAGTAGTCTCCTCAGGACTCT

ACGCGTACGCGGCCGCTCGAG - GFP Tag - GTTTAA

Protein Sequence: >MG213908 representing NM_053133
 Red=Cloning site Green=Tags(s)

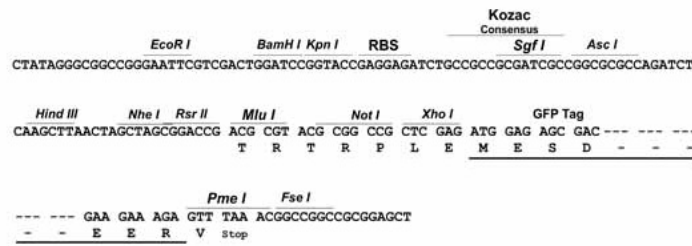
```
METALTKTPEKRQVIFLAILLLLWEASSEAISYSMPPEETESGYLVANLAQDLGLRVGELTTRGARIHHNG
NKELLQLDAERGNLLLKEKPDREALCGATEPCVLHFQIILENPVQFFQTDLQFTDINDHFPEFPDTEMLL
KIQEIAQPGTVFPLKAAQDPDIGSNAVQNYTVSPNLHFHVVTLSRSDDRKYPELVLDRALDREEQPELTL
ILTALDGGAPPKSGTTTTVRIEVDINDNAPQLQSLYAVEVPENSPLNALVVTVSARDLDAGIHGNVAYS
LFQGGGGPQPFVIDEITGEIRLKGALDFEATSYTMEIVATDSGGLSGKCTVAIQVLDVNDNAPKLTISS
LTSSIPENAPEAVVAVFVSVDPSDNGRMVCSIQNGLPFLKPTFFKNFYTLVTERPLDRESNAEYNITI
TVSDLGTPRLTTQHTITVQVSDINDNAPFTQTSYTLFVHENNSPALHIGTISATDSDSGSNGLIIYSL
PPHDQQLGLASLISINSDNGQLFALRALDYEALQAFEFHVGATDRGSPALSSEALVRVVVLDNDNAPFV
LYPLQNASAPCTELLPRAAEPGYLITKVAVDRDSGQNAWLSFQLLKATEPGLFSVWAHNGEVRTTRLLS
ERDAPKHRLLLLVKDNGEPLRSASVMLQVLVVDGFSQPYLPLPEVALNPTQEEDMLTYLVIALASVSSL
FLLSVLLFVGVKLCCKKAREASLADCSIPEGHFPSHLVDVSGAGTLSQSYHYEVCLTEDSGTSDFKFMNPI
IPSSLLQDS
```

TRTRPLE - GFP Tag - V

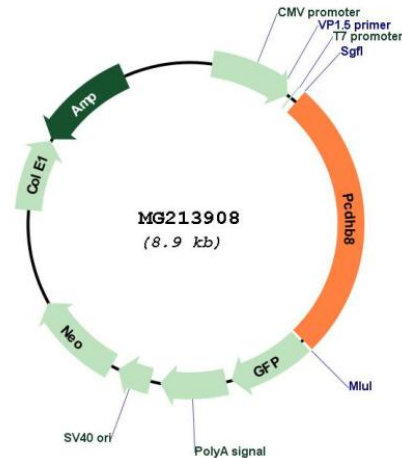
Restriction Sites: SgfI-MluI

Cloning Scheme:

Cloning sites used for ORF Shuttling:



Plasmid Map:



ACCN: NM_053133

ORF Size: 2337 bp

OTI Disclaimer: Due to the inherent nature of this plasmid, standard methods to replicate additional amounts of DNA in *E. coli* are highly likely to result in mutations and/or rearrangements. Therefore, OriGene does not guarantee the capability to replicate this plasmid DNA. Additional amounts of DNA can be purchased from OriGene with batch-specific, full-sequence verification at a reduced cost. Please contact our customer care team at custsupport@origene.com or by calling 301.340.3188 option 3 for pricing and delivery.

The molecular sequence of this clone aligns with the gene accession number as a point of reference only. However, individual transcript sequences of the same gene can differ through naturally occurring variations (e.g. polymorphisms), each with its own valid existence. This clone is substantially in agreement with the reference, but a complete review of all prevailing variants is recommended prior to use. [More info](#)

OTI Annotation: This clone was engineered to express the complete ORF with an expression tag. Expression varies depending on the nature of the gene.

Components: The ORF clone is ion-exchange column purified and shipped in a 2D barcoded Matrix tube containing 10ug of transfection-ready, dried plasmid DNA (reconstitute with 100 ul of water).

Reconstitution Method:

1. Centrifuge at 5,000xg for 5min.
2. Carefully open the tube and add 100ul of sterile water to dissolve the DNA.
3. Close the tube and incubate for 10 minutes at room temperature.
4. Briefly vortex the tube and then do a quick spin (less than 5000xg) to concentrate the liquid at the bottom.
5. Store the suspended plasmid at -20°C. The DNA is stable for at least one year from date of shipping when stored at -20°C.

RefSeq: [NM_053133.1](#), [NP_444363.1](#)

RefSeq Size: 2340 bp

RefSeq ORF: 2340 bp

Locus ID: 93879

UniProt ID: [Q91XZ2](#)

Cytogenetics: 18 B3

Gene Summary: Calcium-dependent cell-adhesion protein involved in cells self-recognition and non-self discrimination (Probable). Thereby, it is involved in the establishment and maintenance of specific neuronal connections in the brain (PubMed:27161523).[UniProtKB/Swiss-Prot Function]