

## Product datasheet for **MG213896**

### Chadl (NM\_001164320) Mouse Tagged ORF Clone

#### Product data:

Product Type:	Expression Plasmids
Product Name:	Chadl (NM_001164320) Mouse Tagged ORF Clone
Tag:	TurboGFP
Symbol:	Chadl
Synonyms:	AY100452; D930017K21Rik
Mammalian Cell Selection:	Neomycin
Vector:	pCMV6-AC-GFP (PS100010)
E. coli Selection:	Ampicillin (100 ug/mL)



[View online »](#)

**ORF Nucleotide Sequence:**

>MG213896 representing NM\_001164320  
 Red=Cloning site Blue=ORF Green=Tags(s)

TTTTGTAATACGACTCACTATAGGGCGGCCGGAATTCGTCGACTGGATCCGGTACCGAGGAGATCTGCC  
 GCC**CGGATCGCC**

ATGGAGAGGCCCCAGAGCTCCATCTGGGTCTTTATGCTGTGCTGTTTCATGGTGTGCTCCAGAGCCCAG  
 CCTGGCAGCTAGCTGCCAGCGATGCCACAGACCTGTGTCTGCGACAACCAAGACGGCATGTTACCTG  
 CCGGCACCCAGAACCTCACCGAGGTGCCAAACACCATCCCTGAGCTGACCCAGAGGCTGGACCTCCAGGGC  
 AATATACTGAAGGTCTCCCTGCAGCGGCTTCCAGGACCTGCCCCACCTCACGCATCTGGACCTGCGGA  
 ACTGTCAGGTGGAGATGGTGGCCGAGGGTGCCTCCGTTGGCTGGGTGCGCTGCTCCTCAACCTGGC  
 TTCCAACCGCTGAGCACCTGCCCCAGGAGGCGCTGGACGGGCTGGGCTCGCTGAGGCGCTGGAGCTG  
 GAGGGGAACATGTTGGAGGAGCTGCGCCCGGGGACCTTCGGCGCCCTGGGCTCGCTGACCACTCTCACT  
 TGGCCACAACGCCCTGGTCTACCTGCCCGCCATGGCCTTCCAGGGGCTGCTGCGCACCCGCTGGCTGCA  
 GCTGTCTACAATGCGCTCAGCGTCTGGCCCCGAGGCTCTGGCCGGCTGCCGCGCTGCGCCGTCTC  
 AGCTGCACCACAACGAGCTGCAGGCCCTGCCCGGGGCCCTGTCCAGGCCCGCAGCCTGGCGCGGC  
 TGGAGCTGGGTACAACCCGCTCACCTACACGGGAGAGGAGGACGGCCTGGCGCTGCCCGCCCTGCGGGA  
 GCTCGCACTGGACCACGGGTCCCTGCAGGCCCTGGGGCCCCGGGCTTCGCCCACTGCCCGCGCTGCAC  
 ACCCTCGACCTCCGCGGGAACGAGCTCACACCCTGCCCCGCTACAGGTCCCGGCCAGCTGCGCCGCC  
 TGGCGTGCAGGGCAACCCGCTGTGGTGCCTGCCACGACGGCCCTGCTCGAGTGGTGGTGGCGCGC  
 TCGGGTGCCTCGGATGGCGCTGCCGGGGCCCGCGGCTGCGAGGCGAGGCCCTGGATACGCTGCGG  
 CCCTCTGACCTGCGCTGCCCGGGGACGCGGGCGGGGACGGGATGGGACGAGGACGAGGACCGCGC  
 CGGCCGCTCCCCGCGCTCTCTTTCGCTCCCCGACGGAGAGGCCGCTGGGCCACGCCCTGCCCTCC  
 AGCTGCGCGTGGTTCGCGGAGACCCGGCACAGCACTTGCAGCGCCGCGGCTGCAGGCCGTGCCCGC  
 GGCTTCCCAACGACACCCAGCTCCTGGACCTGAGGCGCAACCACTTCCCTCGGTGCCCGCGCGGCT  
 TCCCGGGCTTGCGCCACTTGGTGTGCTGCACCTGCAGCACTGCGGCGTGGGAGCTGGAGCCCGCGC  
 CTTGGCCGGCTGGACCGCTGCTCTATCTTACCTCTCCACAACCACTCTCGGGCTGAGCGCCGCC  
 GCCCTCGAAGGGGCCCAACCTGGGCTACCTGTACCTGGAGCACAACCGCTTCTGAGGATCCCGGGGA  
 CCGCTCTGCGGGCCCTACCCACCCTGTCTGCTACACCTCCAGGACAACGCGTGGACCGCTGGCGCC  
 CGGGATCTGGCAGGAGCGGGCTTTGCGCTGCCTTTACCTGAGTGGCAATCACATCACCCAGGTTTCA  
 CCCGGGGCGCTCGGTCCAGCGCGGAGCTGGAGAAGCTGCACCTCGACAGAAACCGCTGCGAGAGGTGC  
 CGACTGGAGCCTTGGAGGGGCTGCCGGGCTCAAGGAGCTGCAGCTCTCGGGGAACCCGCTCCGGGCTCT  
 TCCAGACGGCGCCTTTCAGCCCGTGGGGCGGCTCGCTGCAGCAGCTCTTCTGAATAGCAGTGACCTGGAG  
 CAGATTTCTCCAGGGCCTTCTCAGGCCTGGGAAAAGGGCTGCGGAGCTTGTACCTGCACAAGAATCAAC  
 TTCAGTCCCTGCCTGCCCGCTGGGGCTCAGCGGGCTGGAGCTGGTGCACCTCAGCGGTAATCCTTTCCA  
 CTGTGACTGCCAGCTGCTCCCGTGCACAGGTGGCTCACTGGGCTGAACCTGCGGGTGGGTGCCACCTGT  
 GCCACCCCTCCAGTGTCCGTGGCCAGAAGGTGAAGGTTGCAGCTCCTGTCTTTGAAGCTGCCAGGCT  
 GGACTGCCAGGAAGGCCAAGAGGACCAACCTCCAGAGGCAAGTCCAGGAGAACTCCAGCCTCAGCCG  
 ACAT

**ACGCGT**ACGCGGCCGCTCGAG - GFP Tag - GTTTAA

**Protein Sequence:** >MG213896 representing NM\_001164320  
 Red=Cloning site Green=Tags(s)

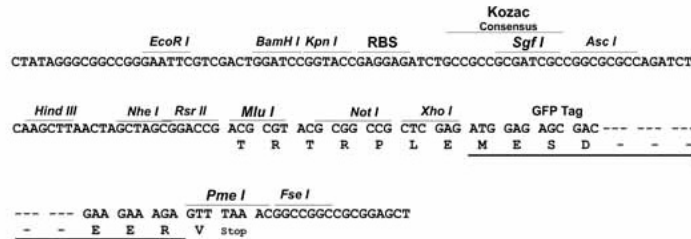
```
MERPQSSIWVFMLLL FVLLQSPAWHVAAQRCPQTCVCDNSRRHVTCRHQNLTEVPNTIPELTQRLDLQG
NILKVLPAAAFQDLPHLTHL DL RNCQVEMVAEGAFRGLGRLLLLNLASNRLSTLPQEALDGLGSLRRELE
EGNMLEELRPGTFGALGSLTTLNLAHNALVYLPAMAFQGLLRTRWLQLSHNALSVLAPEALAGLPALRRL
SLHHNELQALPGAALSQARSLARLELGHNPLTYTGEEDGLALPGLRELALDHGSLQALGPRAFAHCPRHL
TLDLRGNQLTTL PPLQVPGQLRRLRLQGNPLWCACHARPLLEWLVRARVSDGACRGP RRRLRGEALDTLR
PSDLRCPGDAAAGDGDGDEDED RPAGPRAPPLRSPHGEAAWATPCPPACACVAETRHSTCDGRGLQAVPR
GFPNDTQLLDLRRNHFPSPRAAFPGLRHLVSLHLQHCGVAELEPGALAGLDRLLYL YLSHNQLSGLSAA
ALEGAPNLGYLYLEHNRFLRIPGTALRALPTLVSLHLQDNAVDR LAPGDLAGARALRCLYLSGNHITQVS
PGALGPARELEKHLDRNRLREVPTGALEGLPALKELQLSGNPLRALPDGAFQPVGRSLQQLFLNSSDLE
QISPRAFSGLGKGLRSLYLHKNQLQSLPAPLGLSGLELVDLSGNPFHCDCQLLPLHRWLTGLNLRVGATC
ATPPSVRGQKVKVAAPVFEACPGWTARKAKRTP T SRGSARRTPSLSRH
```

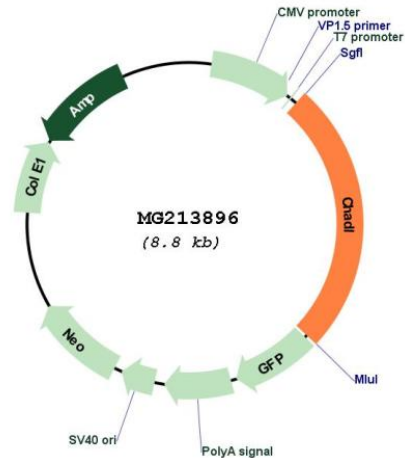
TRTRPLE - GFP Tag - V

**Restriction Sites:** SgfI-MluI

**Cloning Scheme:**

Cloning sites used for ORF Shutting:



**Plasmid Map:**


**ACCN:** NM\_001164320

**ORF Size:** 2244 bp

**OTI Disclaimer:** The molecular sequence of this clone aligns with the gene accession number as a point of reference only. However, individual transcript sequences of the same gene can differ through naturally occurring variations (e.g. polymorphisms), each with its own valid existence. This clone is substantially in agreement with the reference, but a complete review of all prevailing variants is recommended prior to use. [More info](#)

**OTI Annotation:** This clone was engineered to express the complete ORF with an expression tag. Expression varies depending on the nature of the gene.

**Components:** The ORF clone is ion-exchange column purified and shipped in a 2D barcoded Matrix tube containing 10ug of transfection-ready, dried plasmid DNA (reconstitute with 100 ul of water).

**Reconstitution Method:**

1. Centrifuge at 5,000xg for 5min.
2. Carefully open the tube and add 100ul of sterile water to dissolve the DNA.
3. Close the tube and incubate for 10 minutes at room temperature.
4. Briefly vortex the tube and then do a quick spin (less than 5000xg) to concentrate the liquid at the bottom.
5. Store the suspended plasmid at -20°C. The DNA is stable for at least one year from date of shipping when stored at -20°C.

**RefSeq:** [NM\\_001164320.1](#), [NP\\_001157792.1](#)

**RefSeq Size:** 2547 bp

**RefSeq ORF:** 2247 bp

**Locus ID:** 214685

UniProt ID: [E9Q7T7](#)

Cytogenetics: 15 E1

Gene Summary: Potential negative modulator of chondrocyte differentiation. Inhibits collagen fibrillogenesis in vitro. May influence chondrocyte's differentiation by acting on its cellular collagenous microenvironment.[UniProtKB/Swiss-Prot Function]