

Product datasheet for **MG213851**

Prr12 (NM_175022) Mouse Tagged ORF Clone

Product data:

Product Type:	Expression Plasmids
Product Name:	Prr12 (NM_175022) Mouse Tagged ORF Clone
Tag:	TurboGFP
Symbol:	Prr12
Synonyms:	6720469B10; BC058674
Mammalian Cell Selection:	Neomycin
Vector:	pCMV6-AC-GFP (PS100010)
E. coli Selection:	Ampicillin (100 ug/mL)
ORF Nucleotide Sequence:	>MG213851 representing NM_175022, codon optimized . Due to the complexity of NM_175022, the ORF clone is codon optimized for mammalian Expression. The nucleotide sequence differs from the reference sequence, yet the amino acid sequence remains identical.

Red=Cloning site Blue=ORF Green=Tags(s)

TTTTGTAATACGACTCACTATAGGGCGGCCGGAATTCGTCGACTGGATCCGGTACCGAGGAGATCTGCC
GCC**CGATCGCC**

ATGGATCGCAACTACCCATCAGCTGGATTTCGGCGACCCTCTGGGCGCCGGGGCCGGATGGTCTATGAAA
GGAGTGCTAAGGCTTCCCTCGTATACGGCAGCAGCCGCACTTCACATCCCAGACGGACATCCTGCACCG
ACAGGCATATGCAGCTCCTCACCCCTGCAGTCATATGCAACAAACCATCACCCGGCAGGGCTGTGACGG
TTGTTTGACACGGGACTGCACCACGCCGCGCAGCGCAGGGCCCGATGCTAGCGTGATGAATCTTATTAGCG
CCCTGGAAAGCCGCGGCCCCAGCCTGGCCCTCTGCCTCATCTCCTGTCCCAGTTCGGTCCCCCTC
ATGGCAGACTGCTATGCACACTCCAGGACCGACTGAGCTGTTTATTAGTGGGGCCTTGCCAGGCTCCTCT
ACATTTCCAAGCAGCTCCGCTCTGAGCGCTTACCAACACCCTGCTTCCTTCGGCTCCCGACCCTTCCCTG
TCCCCTTCCCTGTCACTGCAGGACCCGCGTTCAGCCCTCCCGCAACGGCCTTCTGTCCCCACACGA
TGTTCTTCATCTGAAACCAAGCCAGGCTCCAACCTGTGCCAGCTCCCTGGGATTTGAAAGACTGGCCGGG
GGGGGGTCTCGGACCAGCCGGCCTCGGGCTGCCAGACCCCCCATATCGCCAGGACCACCAGATC
CGCCTCCGCCCCCGACACCTCCAACACAGTTAATCTGCTGGCCTCAAGCTCTGCTGCCACAGCTGC
AGAGCCGAGTCCCTCAATTGTATAATTTAGTGGCGGCCCCCGCCCGCCTCCCGAAAGGGCCTTG
CCAAGACAGGATACAGTTATTAACATTACCAGCGCCCCGCTAGCGCACAACCGCCTCCGCCACCCCCAC
CTGCACACTCCCTGCAGCACTATCTCATGCGGAGGCTCATATCCAAGCATGGCCATAGGGCCAGCCT
CGCCTGTAGTCTCTGGGTGGCGCGAGCCCTACCGGGGGCGGAGAGCCATCTAAGGGGGACCCCTCA
GGAGCAACTGCAGGAGCCGAGCCGGCCACTGGCCCGAAACAGCCGGAGCGGGGCCGAGGCGGTG



[View online »](#)

GTGGGGTTACCGCCAATCATCCAGTCTCCTGGGTACAAGACATCTAAAGGCGGATATGGGCCAGCAAC
 AGGAGGGCCACACGCCACCGCCCCCTAGGAGCACAGCCACCCAAAGTGCCAGTCACTGGGAGGTCTT
 GCTGCGGCTACGCCGACAGTAAGGCTTCCGGGGGGTGGGGCCGGAAGTCAGGCCTATCCCCCGGT
 AGCCACAGGGCTCCTCGGACCCAGGCGTATGGTCAAGGGTTCGGGGGAGGTGAGGCTCAGGACCTGTC
 AAAGGGCCCTTCTATTCTGGCGCCCCACAGCCCCCTAGCGGCCCTCCTCCACTGGCTTGGCCACA
 TGTCAGTCTTATTCTCTGACCAGCTCCAGGGACAGTTGTACGGCGTGAATCTGAACCCATCCAGGGC
 CTGCTGCACAGCCAGGGGCTGCCACTGCGAGTCTAGTCTCAGCTACAGCACTGGACATTCCTCAGC
 CCTGTCTGGCCACGGAGGTGGTTGGGGTCCAAGCTCCCTCGGGGGCGGGGCGAAGCTAGTCTTCCCAT
 ATTATCCGCCCTCTGAGTCTCCCCCTGCAACCGGTGCGCCACCCGGTGTGGGGAGCCCCGGTGCCCCGG
 GAAAATATCTGAGCAGCTCCTCGCTCCGCACCATTCCTGGCTCCTCCAGGAGCGAGTCTTACCGGGC
 CGGCGGGGGCGGATATAAAGGCAAAGGTGACGGCTCTGAACTCCTGGCGGGGCCGAGGCTCCGCCGT
 GAGAGAACTGAGGACGAAGATTCTGATCCAGCACCTGCTTCAAGTCCCTCACCTCCAAGGACATCTG
 GAGCTGACGGCTGGTTGGCGAGGACGGTCCAGCTGACGCAGCAAAGGTCTTGGTGGTTCAGGCGGCGC
 AGGAGGGCCCCCGAACACCGTATGAACTGGCCAAAGAGGACCCGCAGCGATATCACTGCAGAGCGTG
 ATCCGCACAAGTCTAGTCTTGACGAAGGGCAACCGCCGCACTCGAGCTGGGCTGGGGCGGATGAAAG
 ACAAGAAAAAGGTCCGGAAGAGGAGGGGAAACACCAGAAGGCCTGGCCACTAGTGTGTGCATTATGG
 CGCTGGCGCTAAGGAGCTTGGCGGTTCTTGCAAGTCTCCGCCCCCGCCCCCTCCTCCGCTCAAGCA
 ACACAGCCGGCCCCACATGGTCTGCTGTTGGAAGCAGGCGGGCCTGACCTTCTATGGTCTTCCACCCC
 CACCACCCAGCTGCTGCCAGTGTGCTCAGTCATGCACCCTCTCCGTCTCCGTCGCGACCTAAAGTTGG
 AGTGCACCTCCTGGAGCTGCCACCAGAGACGGGGCTCCTCAGCCCCACCTCCCCCGCTCCCCCATG
 CCCCTGCAGCTGGAGGCTCACCTGAGAGGGCACGGTTGGAACCTACAGCACCTTACCCCGACTCAGAC
 CAGAGGAAAGTCTGGAGCTCCCGGCCCATGCAAGAGTGTCTGGCGCACTTGAACCTTTGCCTTCAGG
 CCCCAGAGTCCCGGGTGGGGCCCCCTAACAGCGAAGGGAAGGACCCCGCTGGCGTTCACAGTCACT
 TCTCCGCAAGGCACAAAGCGCCTAGGTTTGTGCTCTGACCAGTATCTGTTTCCAGACAGCCTGTGC
 AGGACGAGGAGCGGAGCTTCTTCCACTATGGAAGAGATGTTCCGGGGTGGCGCAGCCGACGACTATGG
 TAAGGCAGGACAGACTGAAGATGATGGCGACCCAAAGACCGCGCGGGCCCTCCACCAGTCCCACGGCT
 TACGATCCCTATGGACCTTACTGTGGTGGCGCGCTTCTGGAACAGGGCCTGAAACACCAGGGCTGGGT
 TGGATCACAATAAGCCCCCGAGCTCCCATCAACCGTCAACGCAGAGCCGCTCGGACTCATCCAGTCCGG
 TCCACATCAGTCTGCCCCCTCCTCCTCCGCCGCCACCCTCCACCCCTGTGAGCGAGCCAAAGGT
 GGACTGACAAGCCCTATCTTCTGCTCCACAAAGCCAAAAAACTTCTGAAAACAGCAGCTTCCACCTGC
 TCCGCCCGCGACCCCCCTTTTTCAGACACCTAAAAGCTTTACGCCAGGAGTACGAATTCGAAGCGGA
 TGAGGATAAAGCGGATGTACCTGCCGATATACGGCTGAATCCCCGAGATTGCCTGACCTCGTGTCTAGC
 TGAGATCCAGACCCGCCCTCTCCTCTGGGCGACATCGATTTCTGCCCCCAAACCTGGACCCGATG
 GACCAAGACGCAGGGGAAGAAAACCAACCAAAGCTAAGAGAGATGGTCCCCACGACCTAGGGGCAGACC
 GCGCATCAGACCTCTGGAGGGACCTGCTATGGCCGGACAGCTTCCATAACGACGGACGGAGTAAGAAA
 CCACGGGAAGGGGTAGGGGAGAGGGAGGAAGGCCGAGGAGATGGGCGGAACCCGGCTTGAACCACTGA
 AGCCATTGAAAATCAAGCTGTCCGTTCCCAAAGCTGGAGAAGGACTCGGTGCACCCAGCAACGACGTGAT
 CTCTGGAGTCGATCACAATCACTGGACTCCAATTTGACCCGGGAGAAGATCGAAGCAAAGATTAAGAG
 GTGGAGGAGAAGCAGCCAGAAAATGAAATCCGGATTTATGGCATCCTTCTGGATTTCTGAAAGCGGAA
 AGAGGCACCCCCCTTTATCAGGCAGGCTGACACCTCACTGTCTCCACCAAGTCAGTCCAGCCTC
 TGTCGCGACTCGGGGCTGCAGCCTCCTCCTACAGTCCCTACGGTCCCACACCCAGCTCCATCTGGC
 CCTTTTGGGCTCGGGGAGCACTCGAAGCAGCTGAGAGCGAGGGCCTCGGTCTGGGATGTCCCTCCCCCT
 GCAAACGGTTGGACGAGGAACTGAAGCGCAACTTGGAACTCTCCCTCCTTCTTCTGATGAAGAAGA
 CAGCGTGGCTAAGAACAGGGACCTTCCAGGCTCTATCTCCAGCGCATCAGCGCTTGGACGACCCCCCG
 CTTACGGGACCTAAGGATACATCAACTCCAGAGGAGCCCCGCTTGCACCCGGCCTACAGCGTCAGGAC
 CTCCACCCCTGCCAAGCTTGCCATTTCAAATAGCTCCGGGACCCCTGAGCCGCCATTGCTGGAGGAAAA
 GCCGCTCCGACTCCTCCTCAGCCCCGACTCCGCAACCAGCACCGCCCCCGCCCCACCCCTCCCCCA
 GTCCAGCACTGCCGAGCCCTACACCCCTCGTACCCCGGTGCGCTTCTCCCCCTCCACCACCTCCTC
 TCCCCCCCCACCACTGCCCTGCCCTCTCCGCCCCACCCACCACCCGCTCCCAACCGTCCCACC
 CGTGGCGCCACCAGGGAACCCCTGCCCTCCCTGAAGACCTGAGCCCCCTGATGCCCGGCCACTG
 CACTGGCCAAGAAGCAGGAGACTGCTGCTGTTTGTGGCGAGACGGATGAGGAGGCGGGGAAAGCGGGC
 GGGAGGGAATTTTCGAGAGCGCGACGAGTTCGTAATCAGAGCTGAGGACATACCTTCCCTGAAACTCGC

CCTGCAACAGGCAGGGAACCCCGCCTATTTGGCGGGTGCAGAAAGCTCTGCTCCAGAAATTCACCCCA
GAGATTAAGATGGTCAGCGCCAGTTCTGTGCCACCTCCAACCTACCTCGGCTACTTTGGGGACGCGAAAA
ATAGGTATCAACGCCTGTACGTGAAGTTTCTCGAGAATGTCAACAAGAAAGATTACGTTTCGGTCTGCGC
CAGAAAACCTGGCACCACCACCCTGCTGTGAGGAGATCTGGACAACTAAGGGCCCAACCCCTGTC
GGGGCAACAGCGCACCGCTTCTAAGTCCAGGCCCCACCACCAAGCCGGAGACGCCAGAAAAATGA
CCTCCGAGAACTCCAGAGCCCGCTCCCGAGCCCGCGTGCCTGAGCCTCCTGCTCCGAAAAACCCAG
CCCGCCAGGCCAGTAGAGAAAGAGAAGGAGAAGGAGAAAGAAAGGAGAAGGAGAAGGAAAGAGTGACT
AGGCCGCTTAGGTCTGAAAGGGCTACGAGCGGGAGACAGATGAGGACGGACCGATCTCTTGCTACCGCC
AATCTACCACCTCCCGGCTTCTAAAGCACGCCCTCTAAAGTTAAAGCCGAGCCCCCTCCGAAAAAGAG
AAAGAAGTGGCTGAAAGAGGCTGTGGCAATGCATCTGCAGGAGACGGCCCTGGCGGTTCTTCTTGAC
TCCGAATCCTCCCTGGCGCACCTTCTGAAGATGAACGCGCCGTGCCGGGACGCCCTCAAGACACGCG
CAATGCGGAAATGTACAGATCTTATGTAGAGATGCTGGTGAAGTGCCTGGACCCTGATATGATACA
AGCTCTCGAAGACTCATGACGAGCTGACTTGCCCCCATGAGGAAGATCGATGGGCTTCTGAATGAA
CACAAGAAAAAGGTGTTGAAGCGATTGTCTCTGTACCTGCACTGCAGGACGCCCTCCACACCTTCCCC
AGCTGCAAGTGAACAGACCGGGGAGGGAAGTCCCGAGGAGGGTGTGTCCGGCTGCGCCAGCTGGTGA
GCCATACAATCGCAAGACGCTGTCCAAGCTCAAAGAAGTGTCTGCGGGCTCAGGAATCAAAGTCGAA
TTGGAGAAATCAGGGTATTATACTCTATCATTCTCTGCATCATTACAAGTATCACACTTCTCTGCGGT
GCCGGGATCAGACCCTGGCGATAGAAGGAGCGCCGAGGATTTGGGACAGGAAGAGGTGGTGCAGCAGTG
CATGAGGAATCAGCCCTGGCTCGAGCAGCTGTTTGACAGCTTCAGCGACTTGCTGGCACAGGCCAAGCC
CATAGCAGGTGCGGA

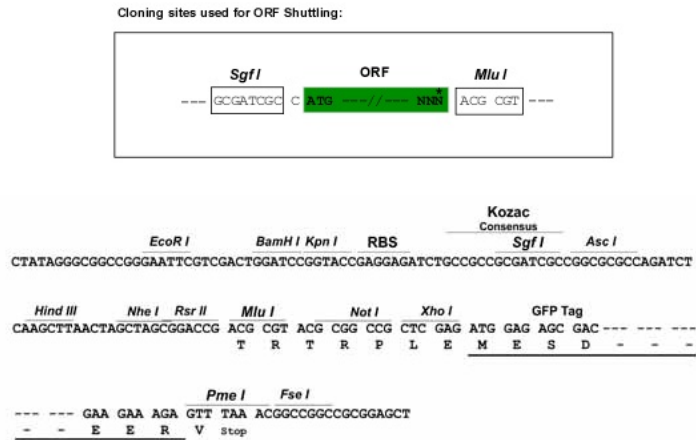
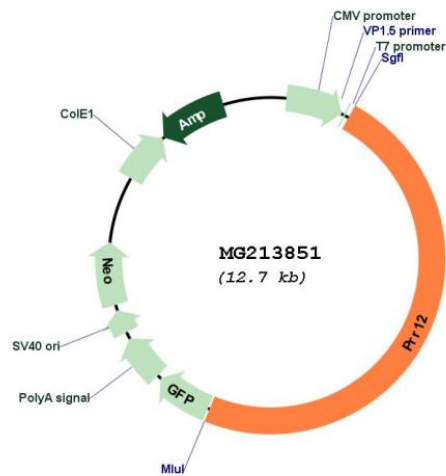
ACGCGTACGCGGCCGCTCGAG - GFP Tag - GTTTAA

Protein Sequence: >MG213851 representing NM_175022
 Red=Cloning site Green=Tags(s)

MDRNYPSAGFGDPLGAGAGWSYERSAKASLVYSSRTSHPETDILHRQYAAAPHPLQSYATNHHPAGLSG
 LFDTGLHHAGSAGPDASVMNLSALESRGPQPGPSASSLLSQFRSPSWQTAMHTPGTELFI SGALPGSS
 TFPSSSALSAYQH PASFGSRPFVVPSSLSLQDPPF SPPANGLLSPHDVLHLKPSQAPTVPSSLGFERLAG
 GGVLGPAGLGAQTTPPYRPGPPDPPPPRHLPTQFNLLASSAATAAEPSSPQLYNFSGAAPGPPPERAL
 PRQDVTIKHYQRPASAPPPPPPAHSLQHLYSCGGSYPSMGHRASLACSPLGGGEPSPGAGEPSKGGPS
 GATAGAAGRATGPETAGGGAAGGGGGRPIIQSPGYKTSKGGYGYPATGGATRPPPRSTATPKCQSLGGP
 AAAYAAGKASGAGGAGSQAYSPGQPQGLLGPQAYGQFGGGQAQDL SKGSPSYSGGPPQPPSGPPPPGLAT
 CQSYSPDQLQGLYGVQSEPYGPAHHSQGLPTASPSLSYSTGHSPALSGHGGGWGSSSLGGGEASPSH
 IIRPLQSPPATGRPPGVGSPGAPGKYLSSVLASAPFLAPPGASSYAAGAGGYKKGKGDGSELLAGPGGSAA
 ERTEDEEFLIQHLLQAPSPRSTSGADGLVGEDGPADAAGLGGSGGAGGAPGTPYELAKEDPQRYHLQSV
 IRTSASLDEGATAALEGLGRMKDKKGGPERGGETPEGLATSVVHYGAGAKELGAF LQKSPPPPPSAQA
 TQPAFHGLLLEAGGPDLPMLPPPPQLPSVL SHAPSPSPSAPKVGVHLLLEPATRDGAPQPPPPPPPM
 PLQLEAHLRGHLEPTAPSPRLRPEESLEPPGAMQELLGALEPLPSGPGDPGVGPPNSEGKDPAGAYRSP
 SPQGTKAPRFVPLTSICFPDSSLQDEERSFFPTMEEMFGGGAADDYKAGQTEDDGDPKTGAGPPPGPTA
 YDPYGYCGGRASGTGPEPTPGLGLDHNKPELPSTVNAEPLGLIQSGPHQSAPPPPPPPPPPPVSEPKG
 GLTSPIFCSTKPKKLLKTSFHLRRRDPFQTPKLYAQEYEFEADEKADVPADIRLNPRRLPDLVSS
 CRSRPAL SPLGDIDFCPPNPGDPGPRRRGRKPTKAKRDGPPRPRGRPRIRPLEGPAMAGPASITTDGAKK
 PRGRGRGRKAEEMGGTRLEPLKPLKIKL SVPKAGEGLGAPSNDVISGVDHNSLDSNL TREKIEAKIKE
 VEEKQPEMKSGFMASFLDFLKSGKRHPPLYQAGLTPPLSPPKSVPASVPTRGLQPPPTVTPVHPAPSG
 PFGLGGALEAAESEGLGLGCPSPCKRLDEELKRNL ETLPSFSSDEEDSVAKNRDLQESISSAISALDDPP
 LTGPKDTSTPEEPPLDTGPTASGPPPLPSLSSNSSGTPPEPPLLEEKPPPTPPAPTQAPPPPPPPPP
 VPALPSPTPLVTPVASSPPPPPPPPPPALPSPPPPPPAPTTPVPVAPPEEPPAPSPEDPEPPDARPL
 HLAKKQETAAVCGETDEEAGESGGEGIFRERDEFVIRAEDIPSLKLALQTGREPPPIWRVQKALLQKFTP
 EIKDGQRQFCATSNLYGYGDAKNRYQLYVKFLENVNKKDYVRVCARKPWHRRPLPVRRSQTKGPTPV
 GGNSAPPSKVQAPPPKPEKMTSEKPPPEPAPEPAVPEPPAPEKSPPRPVEKEKEKEKEKEKERV
 RPLRSEATSGRQMRDRLATGQSTTSRLPKARPSKVKAEPKPKRKKWLKEAVGNASAGDGGGSSSD
 SESSPGAPSEDERAVPGRLLKTRAMREMYRSYVEMLVSTALDPDMIQALEDTHDEL YLPPMRKIDGLLNE
 HKKKVLKRLSLSPALQDALHTFPQLQVEQTGEGSPEEGAVRLRPAGEPYNRKTLSKLRKRSVVRAQEFKVE
 LEKSGYTYLHSLHHYKHTFLRCRDQTLAIEGGAEDLGQEEVVQQCMRNQPWLEQLFDSFDLLAQAQA
 HSRCG

TRTRPLE - GFP Tag - V

Restriction Sites: Sgfl-MluI

Cloning Scheme:

Plasmid Map:


- ACCN:** NM_175022
- ORF Size:** 6105 bp
- OTI Disclaimer:** The molecular sequence of this clone aligns with the gene accession number as a point of reference only. However, individual transcript sequences of the same gene can differ through naturally occurring variations (e.g. polymorphisms), each with its own valid existence. This clone is substantially in agreement with the reference, but a complete review of all prevailing variants is recommended prior to use. [More info](#)
- OTI Annotation:** This clone was engineered to express the complete ORF with an expression tag. Expression varies depending on the nature of the gene.

Components:	The ORF clone is ion-exchange column purified and shipped in a 2D barcoded Matrix tube containing 10ug of transfection-ready, dried plasmid DNA (reconstitute with 100 ul of water).
Reconstitution Method:	<ol style="list-style-type: none">1. Centrifuge at 5,000xg for 5min.2. Carefully open the tube and add 100ul of sterile water to dissolve the DNA.3. Close the tube and incubate for 10 minutes at room temperature.4. Briefly vortex the tube and then do a quick spin (less than 5000xg) to concentrate the liquid at the bottom.5. Store the suspended plasmid at -20°C. The DNA is stable for at least one year from date of shipping when stored at -20°C.
RefSeq:	<u>NM_175022.2</u> , <u>NP_778187.2</u>
RefSeq Size:	6879 bp
RefSeq ORF:	6108 bp
Locus ID:	233210
UniProt ID:	<u>E9PYL2</u>
Cytogenetics:	7 B3