

Product datasheet for **MG213823**

Klrc3 (NM_021378) Mouse Tagged ORF Clone

Product data:

Product Type:	Expression Plasmids
Product Name:	Klrc3 (NM_021378) Mouse Tagged ORF Clone
Tag:	TurboGFP
Symbol:	Klrc3
Synonyms:	Klrc2; Nkg2e
Mammalian Cell Selection:	Neomycin
Vector:	pCMV6-AC-GFP (PS100010)
E. coli Selection:	Ampicillin (100 ug/mL)
ORF Nucleotide Sequence:	>MG213823 representing NM_021378 Red=Cloning site Blue=ORF Green=Tags(s)

TTTTGTAATACGACTCACTATAGGGCGCCGGAATTCGTCGACTGGATCCGGTACCGAGGAGATCTGCC
GCC**CGATCGCC**

ATGAGTCACCTGCTTGGAACTGAACAGGCCTCAGAAGCCAGGAAAGCCACAAAGAAAACCCAGGCGCAGC
TCCGTTTCAGTAATGCAGCAGGAGATCGCCTGCTGGAGTTTAGCCTTCAACATGCTTCCCAGAAGCATCT
GAAGGCCAGCAGGCATGGCTACTGCAAAAATTTGCATCACCTCCAGAGAAGCTCATCGCTGGAATCCTG
GGCACCATCTGGTTTACCTTATTGATTGCTCTAGTAATCTCAACCAGAATTGTTTCTCCATATAAACC
ACAGTCTATCTTCAGCACAACTTATGCTCTTTGTCCAAAGGAATGGATCTTATATTCTCACAATTGTTA
TTACATTGGCATGAAAGAAAATCTTGAATGACAGTTTGGTGTCTGCATTTCCAAAACCTGTAGTCTG
CTTTATATAGACAGTGAAGAGGAGCAGGACTTTCTGCAATCCCTTCACTGGTCTCATGGACTGGAATCC
TTCGGAAGGGCAGAGGTGAGCCCTGGGTCTGGAAGAAAGACTCAACTTTCAAACCAAGATAGCAGAGAT
TCTCCATGATGAATGTAAGTGTCCATGATGTCAGCTTCTGGTCTCACAGCAGACAGCTGTACAACCTTA
CATCCATATCTTTGTAAGTGAAATTCATC

ACGCGTACGCGGGCCGCTCGAG - GFP Tag - GTTTAA



[View online »](#)

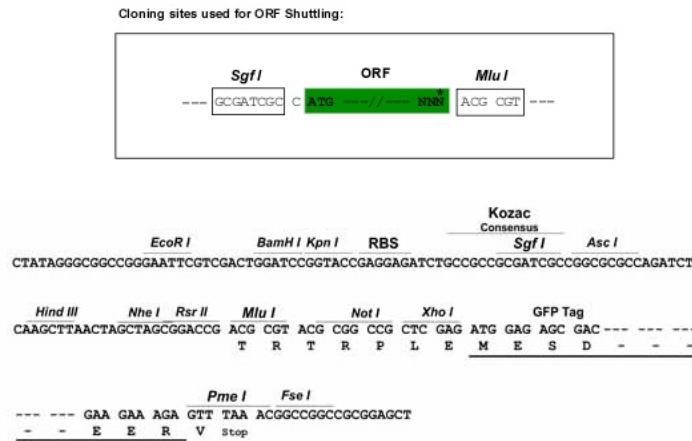
Protein Sequence: >MG213823 representing NM_021378
 Red=Cloning site Green=Tags(s)

MSHLLGTEQASEPRKATKKTQAQLRF SNAAGDRLLLEFSLQHASQKHLKASRHGYCKNFASPPEKLIAGIL
 GTIWFTLLIALVISTRIVSPYINHLS SAQTYALCPKEWILYSHNCYYIGMERKSWNDL VSCISKNC SL
 LYIDSEEEQDFLQSLSLVSWTGILRKG RQPWWKKDSTFKPKIAEILHDECNCAMMSASGLTADSC TTL
 HPYLCKCKFP I

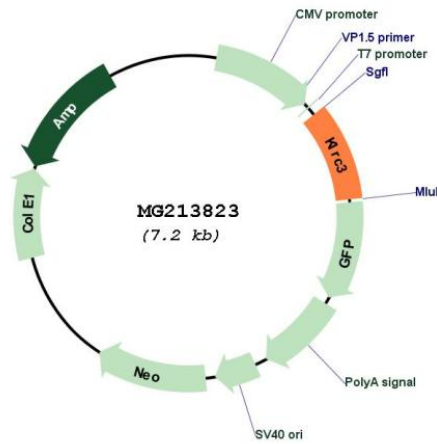
TRTRPLE - GFP Tag - V

Restriction Sites: SgfI-MluI

Cloning Scheme:



Plasmid Map:



ACCN: NM_021378

ORF Size: 663 bp

OTI Disclaimer:	The molecular sequence of this clone aligns with the gene accession number as a point of reference only. However, individual transcript sequences of the same gene can differ through naturally occurring variations (e.g. polymorphisms), each with its own valid existence. This clone is substantially in agreement with the reference, but a complete review of all prevailing variants is recommended prior to use. More info
OTI Annotation:	This clone was engineered to express the complete ORF with an expression tag. Expression varies depending on the nature of the gene.
Components:	The ORF clone is ion-exchange column purified and shipped in a 2D barcoded Matrix tube containing 10ug of transfection-ready, dried plasmid DNA (reconstitute with 100 ul of water).
Reconstitution Method:	<ol style="list-style-type: none">1. Centrifuge at 5,000xg for 5min.2. Carefully open the tube and add 100ul of sterile water to dissolve the DNA.3. Close the tube and incubate for 10 minutes at room temperature.4. Briefly vortex the tube and then do a quick spin (less than 5000xg) to concentrate the liquid at the bottom.5. Store the suspended plasmid at -20°C. The DNA is stable for at least one year from date of shipping when stored at -20°C.
RefSeq:	NM_021378.1 , NP_067353.1
RefSeq Size:	666 bp
RefSeq ORF:	666 bp
Locus ID:	58179
Cytogenetics:	6 F3