

## Product datasheet for **MG213626**

### Cspp1 (NM\_026493) Mouse Tagged ORF Clone

#### Product data:

Product Type:	Expression Plasmids
Product Name:	Cspp1 (NM_026493) Mouse Tagged ORF Clone
Tag:	TurboGFP
Symbol:	Cspp1
Synonyms:	2310020J12Rik; 4930413O22Rik; AA387550; BC055915; Cspp2; Cspp3
Mammalian Cell Selection:	Neomycin
Vector:	pCMV6-AC-GFP (PS100010)
E. coli Selection:	Ampicillin (100 ug/mL)
ORF Nucleotide Sequence:	>MG213626 representing NM_026493 Red=Cloning site Blue=ORF Green=Tags(s)

TTTTGTAATACGACTCACTATAGGGCGGCCGGAATTCGTCGACTGGATCCGGTACCGAGGAGATCTGCC  
GCC**CGATCGCC**

ATGGCAGATAGCTTGGATGAATTTATTGAAGAGCAAAAAGCGAACTGGCCAAAGACAAAGCAGAATTGG  
AAAGTGATCCACCGTACATGGAGATGAAGGAAAGGCGTCAGAGAACTCTGAAAACAGTAAATATT  
AATCTCTATGGCTAAGGAGAACATTCCACCAAGCAGCCAACAACAGCCCAAGGGACCCCTTAGGAATTGAA  
TATGGCTTAAGTTTACCCTTGGAGAAGATTATGAACAGAAGAAACATAAATTAAGAAGAATTGAGGC  
AAGATTATAGACGATATCTTACTCAGAAAAATTCCTATCTACTGGTGAACAGACCCATCTACTCTGGG  
AGTTTCTTCCATTGATGAGCGGTTATCTGCCAAGGAAAGATTGAACTTGAACGCAACCGAGAATAC  
AATCAGTTTCTCAGGGTAAGGCAGAATCCACAGAAAAAGTCAGACAGGTAGAAAAGAATATTGAGCCTA  
AGAGTCAAAGAAATAAAACCCTATTAGTCAAGGTAATCTGATCTACCTTTACAAATACAGACTGCATA  
CACACATTCAGAGGGACCCCTGGCTAAGCCGGCAAGAGGAGGGCCTGTACCGACAGCTAGATGGTGAAT  
GAATTAAGGAGCAGAAGACCGCTTAAACAACAAGGAAGAAGTAGGCATTTCTGGTGCAGAACATCCAA  
GCCTTTCTGGCAGCGCTGGTGTCCAGAGAGAAGAGCCCGCAGGGCTAACGGGGAGCGGGTGCTTGACAG  
ACAACATTCAGAGCCGACCGAGACCCTGGTGTGAGTGAAGACATGGACGAGAGGTTTAGATTTGAAAGT  
GATTTTGATAGAAGACTTTTGAGAGTGTATACAAATGGCAGCCGATGGGAGCAGACGAGGGTATGTGG  
ATGGGGATGATGTCCAGAAGAGCCAAACACACAGATCTCAGCTGCTGAAAATAAAAGTGTTCAGTGTAA  
TGGACCACCCAGATCTGCTGATCTCGATATCACAAAGTCCATTTGCAGGCATGCTCTTTGGAGGTGAAGAT  
CGAGAACTTACCAAGAGAAGGAAGGAGAAATATAGGCAAGAACTACTAGAACAGATAGCTGAGCAACAGA  
AGAAGAAGAGACGAGAAAAAGATTTAGCATTTGGAATTACAACCTCTGGAGTACAAGACCCTGAAAAATC  
GCCTGATAGACTAAAGCAGTTTAGTTTGACACCAAGACACTTTGAAGAGATGCCACCTGAGAGGCCCAGA  
GTAGCTTTCCAGACACCTCCCCCTCCTCTGCCCCGCTAGCCCATCCGTCACCAGTTTCATTCCG  
CCCCTTCTACAATGAAGACTTGCACAGTGGACTCGGCAGCACCTTGGTGAAGTGGCCATCCCAGGGT  
TCTGCCTGTGCTCTGAATCCACCCCGCTCCGCTCCTTGCCCTCCAGCTTCTAACTATCGAAGTCTCT



TACGATGATGCGTACTATTTTTACGGTGCCAGAAATACACTGGATCCCAATATTGTATACTATGGTTCAG  
GAATGATTGGAGGACAGCCTGCCCTCATGTCTCTGCCCTGTCCTCACCAGGTAGCACCGCCAGCTGT  
GAATACTGTTGGACAGAAATGAACAGAAAGTTCTTAGTGATGGACTCAGGAATTCAGGACTGGTCTTTGAG  
GATAAGCCAAAACCTTCTACACAGTCGCTTCAGTCTTACCAAGAAGCTTTGCAGGAGCAGATTCGGGAAA  
GAGAAGCAAGAAGGAAGAAAGAACGTTTAAAAAAGAAGAATATGAAGCTAAATTAGAAGCCGAAATGAG  
GATCTACAACCCCTGGGGGAAGGGCGAGGTGGTGCTCCTCTCAGAGACGCCAAAGGAAATCTGATAACT  
GATTTGAATAGGATGCACAGACAGAATATAGATGCCTACCATAACCCAGATGCAAGAACATATGAAGATA  
AAAGGGCTGTTGTATCTATAGACCAAAAATTTAGCCACTTCAAATGCTGAGAACCTAGAAGATTCTGCAAA  
TAAAAACTCAGGTCCTTTGCAAAACACAAAGCTCTCCTTTTGCCCGGGGAAACACATTTGGTGAGCCACTC  
AGCGAGCTTCAGATTAACAGCAAGAATTATACAAGAATTTCTCGTTTTGAGATTGAGGAAAAGAGAC  
AAAGAGAAGAAGCCGAGCGGAGAGCTGAGAGTTGCTGAAGAGAAGGAAGAAAAGCGGCTTGGCGAGCA  
GAGGGCAAGGATTCAGCAAGAGTATGAGGAGGAGCAGGAGCGGAGGAGGAGGAGGAGGAGCAAAAGG  
TTGAAAAATGAAGAACTTATTCGGTTAGCTGAAGAGAGGGCAAAGGAAGCGGAAAGAAAGAAAGAGG  
AGGAAGAAAAACATAACTTGCAACTTCAGCATTACTATGAGAGAGAAAAATTATCGGAGATGAAACAAA  
GCACTTGAGACAGCCTTCTCCTGTAGTTCCTGCTCTTCAGAACAAAATTGCAAGCAAACCTCAAAGACCT  
CCTTCAGTCGACACCATCATAAGTTCCTTCATTACGAAAAGCTCCATGTCCCGGGCAGAGTCTCCTCCAG  
TGCTGCAAGGAAGAACCAACTCCGTGCAGAAGAGGAGAAAAAAAATGTGATTATGGAGTTATCAGAAAT  
GAGGAAGCAGCTCCGGAGCGAGGAGAGGCGTTTGCAAGGGCGGCTGCTGCACCTGGACAGTGACGACGAG  
ATCCCCATGAGGAAAAGAGAGAGAAACCAATGGATATATTTGACATGGCTAGACATCGGTTACAAGCCC  
CTGTCAGAAGACCATCGCCTAAGGGCTTAGATGCTACTACTTTTCAGAATATTCATGACTTTAATGAGCT  
GAGAGAGAGAGATTAGATACTCGAGTGGATCTGAGATTAATGTACCCAGATCCTCCCGCGATCATCAC  
ACCTTGGAGATTGAGCAGCAGGCCCTACTCCGAGAGCAGCAGAAGAGGCTTAATAGAATAAAGATGCGGA  
GAGATGCAGGAGCTGATTTGGACACCCTGCACTGATAATGCACAAGGGCGCAGAATGCCAGAGATGA  
CACTAATGATTTTTTAAAAATTCATTACTAGAACTGATAGTGCTTTTTATTGGTGCTTATGGTGAGACA  
TATCCTGTTATTGAAGACAATGCCTTCCCTCCACCATCACAGCTGCCCTCTGCAAGGGAACGCAGGAGGA  
ACAAAATAAAAGGACTAGATTTTGACAGTAGTCGGCTGCACACCCACAAGATGGTCTCTCTTTAAAATC  
TATCTCCAGTGTAAATGTCGATCAAGTTAGAATGAGAAATGAAGACAGAATGAGAAGACTGACTGAGCAG  
CAGAAGAAACCCACTAACACAGATGATGAGGGTTCAGTGGTTGATCCTGATGACATCATGAGACACCTGA  
GTGATGATGGACGCAACTCTGCGGCAACTGAGCCCTGGCTCCGCCCTGGCACTTCAGAAAGTCTGAAACG  
GTTTCATGGCAGAGCATCTGAATGAAGAACAGCATAAGGGGCTGGGAAGCCAGGCAGGTTTACTTGGCAG  
GGCTCTCTGCTGCACATGCT

ACGCGTACGCGGCGGCTCGAG - GFP Tag - GTTTAA

Protein Sequence: >MG213626 representing NM\_026493  
 Red=Cloning site Green=Tags(s)

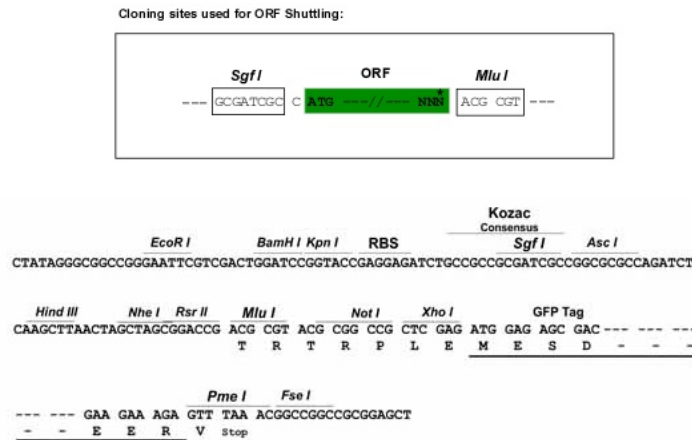
MADSLDEFIEEQKAKLAKDKAELESDPPYMEMKGKASEKLENSKILISMAKENIPPSSQQQPKGPLGIE  
 YGLSLPLGEDYEQKKHKLKEELRQDYRRYLTKNFLTGETDPSTLGVSLPIDERLSAKERLKLERNREY  
 NQFLRGAESTEKVRQVEKNIEPKSQRKNPISQKSDLPLQIQTAITHSEGPWLSRQEEGLYRQLDGEI  
 ELRSRRLKQTKKEEVGISGAEHPSLGSAGVPERRARRANGERVLDROHCRADRDPGVSEDMDERFRFES  
 DFDRRLLRVYTNGRPHGSRRGYVDGDDVPEEPNTQISAAENKSVHCNGPPRSADLDITSPFAGMLFGGED  
 RELTKRRKEKYRQELLEQIAEQKKRREKDLAFGITTSQVQDPEKSPDRLKQFSLTPRHFEEMPPERPR  
 VAFQTPPPPFSAOSSPVVPHSAPSHNEDLHSLGSLGELAHPRVLPVPLNPPPPPLAPPASNYRTP  
 YDDAYFYGARNTLDPNIVVYSGMIGQPAPHVSAPVTHQVAPPVNTVGQNEQKVLSDGLRNSGLVFE  
 DKPKPSTQSLQSYQEQALQEQIREREARRKKERLEKEEYEAKLEAEMRIYNPWGKGGGAPLRDAKGNLIT  
 DLNRMHRQNIDAYHNPARTYEDKRAVVSIDQNLATSNAENLEDSANKNSGPLQTQSSPFARGNTFGEPL  
 SELQIKQQLYKNFLRFQIEEKRQREEAEREKLRVAEEKEEKRLAEQRARIQQEYEEEQERRREKEEQR  
 LKNEELIRLAERRRKEAERKKKEEKEKHNQLQHYYERENIIGDETKHLRQSPVVPALQNKIASKLQRP  
 PSVDTIISSEIHESSMSRAQSPVPARKNQLRAEEKKNVIMELSEMQRSEERRLQGRLLHLDSDDE  
 IPMRKRERNPMDIFDMARHRVQAPVRRSPKGLDATTQNIHDFNELRERDSDTRVLDRLMYPDPPRDH  
 TLEIQQQALLREQQRLNRIKMRDAGADLDTICTDNAQGRMPRDDTNDLFLKNSLLESDFIGAYGET  
 YPVIEDNAFPPPSQLPSARERRRNLKGLDFDSSRLHTPDGLSLKSISSVNVQVQVYMRNEDMRRLTEQ  
 QKKPTNTDDEGSLVDPDDIMRHLSDGRNSAATEPWLPRGTPSESLKRFMAEHLNEEQHKGPKGPTFTWQ  
 GLSAAHA

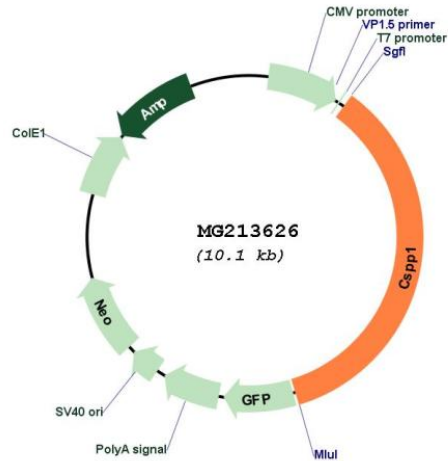
TRTRPLE - GFP Tag - V

Restriction Sites:

SgfI-MluI

Cloning Scheme:



**Plasmid Map:**


**ACCN:** NM\_026493

**ORF Size:** 3591 bp

**OTI Disclaimer:** The molecular sequence of this clone aligns with the gene accession number as a point of reference only. However, individual transcript sequences of the same gene can differ through naturally occurring variations (e.g. polymorphisms), each with its own valid existence. This clone is substantially in agreement with the reference, but a complete review of all prevailing variants is recommended prior to use. [More info](#)

**OTI Annotation:** This clone was engineered to express the complete ORF with an expression tag. Expression varies depending on the nature of the gene.

**Components:** The ORF clone is ion-exchange column purified and shipped in a 2D barcoded Matrix tube containing 10ug of transfection-ready, dried plasmid DNA (reconstitute with 100 ul of water).

**Reconstitution Method:**

1. Centrifuge at 5,000xg for 5min.
2. Carefully open the tube and add 100ul of sterile water to dissolve the DNA.
3. Close the tube and incubate for 10 minutes at room temperature.
4. Briefly vortex the tube and then do a quick spin (less than 5000xg) to concentrate the liquid at the bottom.
5. Store the suspended plasmid at -20°C. The DNA is stable for at least one year from date of shipping when stored at -20°C.

**RefSeq:** [NM\\_026493.3](#), [NP\\_080769.3](#)

**RefSeq Size:** 4378 bp

**RefSeq ORF:** 3594 bp

**Locus ID:** 211660

**UniProt ID:** [B2RX88](#)

**Cytogenetics:** 1 A2

**Gene Summary:** May play a role in cell-cycle-dependent microtubule organization.[UniProtKB/Swiss-Prot Function]