

Product datasheet for **MG213558**

Fam171b (NM_175514) Mouse Tagged ORF Clone

Product data:

Product Type:	Expression Plasmids
Product Name:	Fam171b (NM_175514) Mouse Tagged ORF Clone
Tag:	TurboGFP
Symbol:	Fam171b
Synonyms:	D430039N05Rik
Mammalian Cell Selection:	Neomycin
Vector:	pCMV6-AC-GFP (PS100010)
E. coli Selection:	Ampicillin (100 ug/mL)



[View online »](#)

ORF Nucleotide Sequence:

>MG213558 representing NM_175514
 Red=Cloning site Blue=ORF Green=Tags(s)

TTTTGTAATACGACTCACTATAGGGCGGCCGGGAATTCGTCGACTGGATCCGGTACCGAGGAGATCTGCC
 GCC**CGGATCGCC**

ATGGCGAGGCTCTGCCGTCGCGTCCCCTGCGCCCTGCTCCTCGGCCTGGCCGCTGTGCTGCTGAAGCGC
 GGCTGGTCCC CGGCCCTAGAGCCGAACTCAGTCGCTCCGACCTCAGCCTCATCCAGCAGCAGCAGCA
 GCAGCAGCTGCAAGAGCAAAAGCAGCGGAGGAGGAGGAGGGAGGCCGGAGGTGCCTGGGGCATCC
 TCTACTTTGGTGGCTCCAGTGTCCGATTTATGCTGAAAGTCCAGGTCAATGACATCGTCAGTCGCCAGT
 ACCTGAGCCAAGCCGTTGTGGAGGTGTTTGTAACTACTCGAAGACGAATTCTACAGTCACCAGAAGCAA
 TGGAGCAGTATTGATAAAAGTACCCTATCAGTTAGGACTCAGCTTAACCATCGTTGCTTACAAAGATGGC
 TACGCTTGACATCTCTGCCGTGAAAAGTGGAAAGGATGCCAATATATTCTTCAGTTACACTTTCACTGT
 TCCCGCAAAGCCAAGCAAATATATGGCTCTTTGAAGACACCGTTTGGATTACAGGAAAATTAGCTGATGC
 CAAATCTCAACCAAGTTCAGTTTTCAAAGCCTTCATTAAGTTCCTGACAACCATCACATCAGCAAC
 GTGACTGGCTATCTAACAGTTCTACACCAGTTTTTAAAGGTGGACAGTTTTCTGCCTGCGACTGGAGTCA
 CTATAAATCAGGTTTGAAAATGTTGAGTTGACTCCTCATGCTGCAATATGTTGAAAATATATTCTGG
 AGGAAAAGAAATTAAGGTGGATGGCTCTATCCATGTTTCTTCCCTTCTACATACAAGTAATATAAAA
 ATAGGAGATCGGATACCTGCTTGGACATTTGATATGAATGCAGGTGTTGGGTGCATCACGGTTGGGGAA
 CAGTCAAGGAGCATAACAGTCATTTGATTTGGACCTATGATGCACCACATTTGGGCTACTGGATAGCAGC
 TCCATCCCCAGCCACTCTAGATTTGGCATAAATGACGATTTCCAAGACATCACTGCCTACCACACAGTG
 TTCCTTACAGCCATATTAGGGGGGACGATCGTCATCATCATTGGGTTTTTGTATACTACTGCTTTGTTATT
 GCAGGGGAAAATGTGCAACACCACAGAAAAGAGAAAATATCACGAAGCTTGAGATCTCAAGAGAGA
 TCAGACAACCTCGACAACACATATAAATCATATCAGTTCAGTCAAGACTGCATTAAGCTGAAGATAAA
 CCACAGTTGTTCAATGCCAAAATCTCTCTACAGTCCCCAGAGAAAGGAAACCACAAAAACGGAGCGAG
 AAGAAAAGAAATTTCCATGGTGAAAATCGGGACAACCTTTAAAATCTACAATGAAGACGTTTCTTTCTGTC
 AGTCAATCACAATTATTCAAGAAACCAACACAGTCTTTGGAGCCAGTATGGGGAGCAAACAGCCTAAG
 CATATTAACAACAATCTCTCCCGTCGCTAGGTGACGCTCAAGAGGAAAAGAGATACCTTACAGGGACCG
 AAGAGGTCTATGGGCGGTCCCACATTCCCGAGCAGCTCATGCACATCTACAGCCAGCCTATTGCCATCCT
 TCAGACATCAGACCTTTTCTCCATGCCAGAGCAGTTACATGCCGTAAGTCTGCCACTTTACCAAGAAAG
 GGACAATTGGTCTATGGCCAATTGATGGAACCAGTGAACAGAGAGAACTTACACAAACATTGCCAAAA
 TGCCGATGCATTCTACGTCCAGGCCCCAGATGCCAGAGAAGAAGACATTGTACTTGAAGGTGAGCAGAG
 CTTGCCATCCCAGACCTCAGATTGGAGCCGATATTCCAACAGCTTGTGGAGTCTGTGCTGTTCTCTGGA
 ACTCTAAATGAAGCTGTGGTGATGACCCCTTTTCATCGGAACTTCAAGGAATTTAGAGCAGACCCCTCC
 TGGAGCTGTCAAAGGCAAGCCTCCGCATCCCAGGGCTTGGTTTGTGCTCTTGTATGGAAAGCCTGTGGC
 CCAAGTGAGACTCCTTTATAGACCTGAAAAAGGCAAGAGAACCAGAGCAATGATACGAGTCTAGAC
 TCTGGGTGGATATGAACGAGCATCAGTCAAGCAGAAAGCTGGAGAGGGAGAAAACGTTTCATCAAGAGCA
 TGCATCAGCCCAAGATCCTTTACCTGGAAGACTTAGACCTGAGCAGCAGGAGAGTGAACCACCCGTCG
 CTCCTCCGAGGATCCCGCATTGAGGCACATCTTAGAAGGGGGAAGCGGGGTTATTATCGAGCACCCCGGG
 GAAGAGTCTCCAGGAAGGAAAAGCACTGTGGAAGATTTTGAAGCCAACACATCCCCACTAAAAACGAG
 GCCGGCCACCGCCACTAGCCAAAAGAGATAGCAAGACTAACATCTGGAAGAAGCGAGAGGAACGCCCACT
 GATTCCCCTAAC

ACGCGTACGCGGCCGCTCGAG – GFP Tag – GTTTAA

Protein Sequence: >MG213558 representing NM_175514
 Red=Cloning site Green=Tags(s)

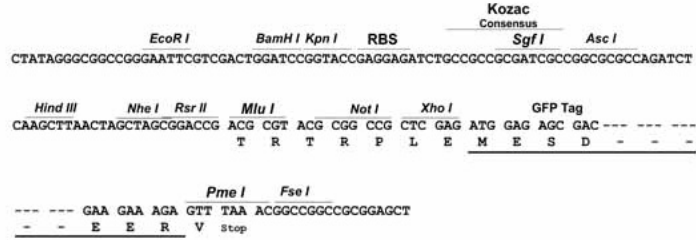
```
MARLCRRVPCALLLGLAAVLLKARLVPAARAELSRSDL SLIQQQQQQQLQEQQQREEAEEGRPEVPGAS
STLVAPVSVFMLKVQVNDIVSRQYLSQAVVEVFVNYSKTNSTVTRSNQAVLIKVPYQLGLSLTIVAYKDG
YVLTSLPWKTGRMPIYSSVTL SLFPQSQANIWLFEDTVLITGKLADAKSQPSVQFSKAFIKLPDNHHISN
VTGYLTVLHQFLKVD SFLPATGVTYKSGLENVELTPHAAICVKIYSGGKELKVDGSIHVSLPLLHTSNIK
IGDRIPAWTFDMNAGVWVHHGWTYKEHNSHLIWTYDAPHLGYWIAAPSPATLDFGINDDFQDITAYHTV
FLTAILGGTIVIIIGFFAILLCYCRGKCATPQKRERNITKLEILKRDQTTSTTHINHISSVKTALKAEDK
PQLFNAKTSSYSPQRKETTKEAEERISMVKTRDNFKIYNEDVSFLSVNHNYSRNPTQSLEPSMGSKQPK
HINNNLSPSLGDAQEEKRYLTGTEEVYGRSHIPEQLMHIYSQPIAILQTSDLFSMPEQLHAAKSATLPRK
GQLVYQQLMEPVNRENFTQTLPKMPMHSVQAPDAREEDIVLEGQQSLPSQTSWRSYNSLLESVSVPG
TLNEAVVMTPFSSELQGISEQTLLELSKGKPPHPRAWFVSLDGGKPVAVRHSFIDLKKGKRTQSNDSLD
SGVDMNEHQSSRKLEREKTFIKSMHQPKILYLEDLDLSSSESGTTVCSPEDPALRHILEGGSGVIEHPG
EESPRKSTVEDFEANTSPTKKRGRPPPLAKRDSKTNIWKKREERPLIPLN
```

TRTRPLE - GFP Tag - V

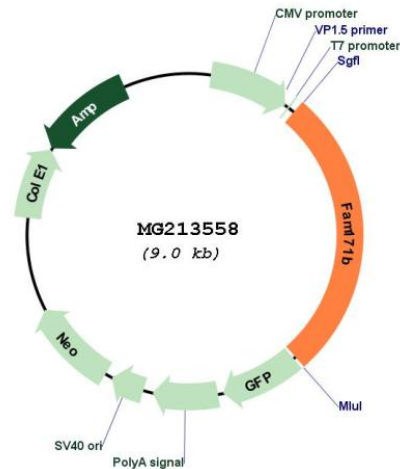
Restriction Sites: Sgfl-MluI

Cloning Scheme:

Cloning sites used for ORF Shutting:



Plasmid Map:



ACCN: NM_175514

ORF Size: 2463 bp

OTI Disclaimer: The molecular sequence of this clone aligns with the gene accession number as a point of reference only. However, individual transcript sequences of the same gene can differ through naturally occurring variations (e.g. polymorphisms), each with its own valid existence. This clone is substantially in agreement with the reference, but a complete review of all prevailing variants is recommended prior to use. [More info](#)

OTI Annotation: This clone was engineered to express the complete ORF with an expression tag. Expression varies depending on the nature of the gene.

Components: The ORF clone is ion-exchange column purified and shipped in a 2D barcoded Matrix tube containing 10ug of transfection-ready, dried plasmid DNA (reconstitute with 100 ul of water).

Reconstitution Method:

1. Centrifuge at 5,000xg for 5min.
2. Carefully open the tube and add 100ul of sterile water to dissolve the DNA.
3. Close the tube and incubate for 10 minutes at room temperature.
4. Briefly vortex the tube and then do a quick spin (less than 5000xg) to concentrate the liquid at the bottom.
5. Store the suspended plasmid at -20°C. The DNA is stable for at least one year from date of shipping when stored at -20°C.

RefSeq: [NM_175514.3](#)

RefSeq Size: 3394 bp

RefSeq ORF: 2466 bp

Locus ID: 241520

UniProt ID: [Q14CH0](#)

Cytogenetics: 2 D