

## Product datasheet for **MG213513**

### Nipsnap3a (NM\_028529) Mouse Tagged ORF Clone

#### Product data:

Product Type:	Expression Plasmids
Product Name:	Nipsnap3a (NM_028529) Mouse Tagged ORF Clone
Tag:	TurboGFP
Symbol:	Nipsnap3a
Synonyms:	1700054F22Rik; AI429120; RP23-95M14.6
Mammalian Cell Selection:	Neomycin
Vector:	pCMV6-AC-GFP (PS100010)
E. coli Selection:	Ampicillin (100 ug/mL)
ORF Nucleotide Sequence:	>MG213513 representing NM_028529 Red=Cloning site Blue=ORF Green=Tags(s)

TTTTGTAATACGACTCACTATAGGGCGGCCGGAATTCGTCGACTGGATCCGGTACCGAGGAGATCTGCC  
GCC**CGATCGCC**

ATGCTTGCTCTCCGAGGCAGCCTAAGGAGGCTTTCACAGGCTCTGGTGCATCAGGTGTGCTCGCCTTTCA  
CTACTGGCCACAGACAACAAGAAGGAACATTCTATGAATTTTGTACTTATTACCTTAAGCCCGCAAGTGT  
GGAAGAGTTCTGTACAATTTTAAGAAAAATGTTTCATCTCGGACAGCTCATTCTGAATTTGGTGGGATAT  
TGGACTGTAGGATTTGGAGGCAGAATAAACTGTATTCCATTTTGGAAATACGATAATTTTGCTCACC  
GTGCTGCAGTATACAAAGCCTTGGCCAAGGATGAGGATTGGCAAGAAGCAGTTCCTCATTCCAATTTGCC  
TCTCATTGACAAAACAAGAGAGTAAATTACCTATTTGGTACCATGGTGCAAAATAGGAAAAGCCTCCCAAG  
GAAGGAGTCTATGAACTGGCTACTTTTCTGATGAAACCTGGTGGCCAGCTCTATGGGGTGAAGCATTTC  
AAAGAGCAGTAAATGCCCATGCTGATCAAGGCTACATAAACTAATTGGTGTGTTCCATGCAGAGTATGG  
ATTGCTCAACAGAGTTCATGTTCTGTGGTGGTGTGAGAACGCAGACGCTCGGGCAGCTGGGAGACGGCAA  
GCCCATGAAGATCCCAGAGTCGTGTCTGCTGTCCGGAAAGTGTCAACTACCTAGATGTTTCAGCAGAACA  
TGTTCTCATTCCGTGGTCATTTTACCCTGAAA

**ACGCGT**ACGCGGCCGCTCGAG - GFP Tag - GTTTAA



[View online »](#)

Protein Sequence: >MG213513 representing NM\_028529  
 Red=Cloning site Green=Tags(s)

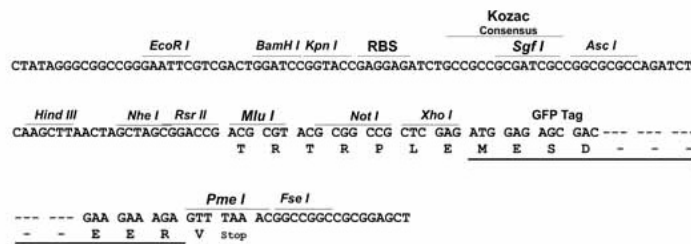
MLALRGSRLRRLSQALVHQVCSPTTGHRRQEGTFYEFCTYYLKPASVEEFLYNFKKNVHLRTAHSELVGY  
 WTVGFGGRINTVFHIWKYDNFAHRAAVYKALAKDEDWQEQLIPNLPLIDKQESEITYLVPWCKIGKPPK  
 EGVYELATFLMKPGGPALWGEAFQRAVNAHADQGYIKLIGVFHAEYGLLNRVHVLWWCENADARAAGRRO  
 AHEDPRVVSAVRESVNYLDVQNMFLIPWSFSPLK

TRTRPLE - GFP Tag - V

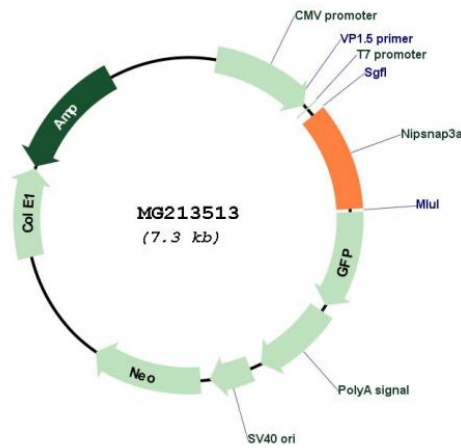
Restriction Sites: SgfI-MluI

Cloning Scheme:

Cloning sites used for ORF Shutting:



Plasmid Map:



ACCN: NM\_028529

ORF Size: 735 bp

<b>OTI Disclaimer:</b>	The molecular sequence of this clone aligns with the gene accession number as a point of reference only. However, individual transcript sequences of the same gene can differ through naturally occurring variations (e.g. polymorphisms), each with its own valid existence. This clone is substantially in agreement with the reference, but a complete review of all prevailing variants is recommended prior to use. <a href="#">More info</a>
<b>OTI Annotation:</b>	This clone was engineered to express the complete ORF with an expression tag. Expression varies depending on the nature of the gene.
<b>Components:</b>	The ORF clone is ion-exchange column purified and shipped in a 2D barcoded Matrix tube containing 10ug of transfection-ready, dried plasmid DNA (reconstitute with 100 ul of water).
<b>Reconstitution Method:</b>	<ol style="list-style-type: none"><li>1. Centrifuge at 5,000xg for 5min.</li><li>2. Carefully open the tube and add 100ul of sterile water to dissolve the DNA.</li><li>3. Close the tube and incubate for 10 minutes at room temperature.</li><li>4. Briefly vortex the tube and then do a quick spin (less than 5000xg) to concentrate the liquid at the bottom.</li><li>5. Store the suspended plasmid at -20°C. The DNA is stable for at least one year from date of shipping when stored at -20°C.</li></ol>
<b>RefSeq:</b>	<a href="#">NM_028529.1</a> , <a href="#">NP_082805.1</a>
<b>RefSeq Size:</b>	1099 bp
<b>RefSeq ORF:</b>	738 bp
<b>Locus ID:</b>	73398
<b>Cytogenetics:</b>	4 B2