

Product datasheet for **MG213491**

Uhrf1bp1 (NM_001080769) Mouse Tagged ORF Clone

Product data:

Product Type:	Expression Plasmids
Product Name:	Uhrf1bp1 (NM_001080769) Mouse Tagged ORF Clone
Tag:	TurboGFP
Symbol:	Uhrf1bp1
Synonyms:	1110020K19Rik; AA408674; F830021D11Rik; mKIAA4127
Mammalian Cell Selection:	Neomycin
Vector:	pCMV6-AC-GFP (PS100010)
E. coli Selection:	Ampicillin (100 ug/mL)
ORF Nucleotide Sequence:	>MG213491 representing NM_001080769 Red=Cloning site Blue=ORF Green=Tags(s)

TTTTGTAATACGACTCACTATAGGGCGGCCGGAATTCGTCGACTGGATCCGGTACCGAGGAGATCTGCC
GCC**CGATCGCC**

ATGGCCGGGATCATTAAAGAAGCAGATCTTGAAGCATCTGTCCCGTTCACTAAGAATCTTCCCGGACA
AAATCACTTGAGCACTCTGAAAGGGGAGGGTCAGCTGACCCATCTGGAGCTGGACGAAGAGGTTCTGCA
GAATGTTCTGGAATTGCCTACCTGGCTGGCCATCACTAGGGTCTACTGCAATCGGGCCTCCATCCAGATC
CAGTGGACCAAGTTGAAGACACACCCGATCTGCTTGTGTCTGGATAAGGTGGAGGTGGAGATGCAGACCT
GTGAGGACCTCGCCCCCAACGGGCAGTCTCCTATCGCCCTTGCCCTGGGACAGAGTGAGTATGGCTT
TGCTGAGAAGGTGGTGGAGGGAATGTTCAATTGTGGTCAACTCCATCACCATCAAGATCCACTCCAAGGCC
TTCCATGCTTCTTTGAACTGTGGCAGTCCAGGGTTATAGTGTCAACCCCAACTGGCAGCAGAGTGACC
TGCGTCTGACCCGCATCACTGATCCCGCCGAGGAGAGGTTTTAACATTTAAGGAAATAACTTGGCAGAC
CCTCCGAGTTGAGGCAGACGCCATAGAAAATGGTGATCAGGACCCAGTTACCACCCCACTGAGGCTCATT
ACCAACCAAGGCCGATCCAGATAGCCCTCAAGAGAAGAACAAAGACTGCAATGTGGTCCGCTCCAAGT
TGACCTTCTCTGGACGACCTGCTCTGGGTGCTGACGGACTCACAGCTCAAGGCGATGATGAAGTACGC
CGAGTCTGAGTGAGGCCATGGAGAAGTCTGCCAGCAGAGAAAGAGCCTGGCTCCTGAGTCTGTGCAG
ACCACTCCACCCGCTCCAGTGCTCAGCAGACTTGGGCCAGGCATTGGTGGCAGCCAGGCGAGCAGCA
GCAGCAGTCTGACCCAGTATTTTGAAGAAATTTGACGTGAAGGAGTCTTCTACCACCTCCTCATCTC
CCGCTGGACCTGCACATCTGCGATGACAGCCAGTCCCGAGAGCCAGGTGTCTCTGCAAACAGACTCACG
GGTGGTGTATGCAGCTCACCTCCGCAGGATGGCGTTTGACTACTACCCCTTCCATCGGGCAGGTGACA
GCTGTAACACTGGGTGCGGCACTGTGAGGCCATGAAACCCGAGGCCACTGGGCCAGCAACTGGTGAC
AGAGTTTCAGAGTCGGGTGGAGAAGCAGTGTGAGGGGGCAGTGTGAAGCCCCGTGGCTGTTGGGGGTG
GACCTCCCTCCGGAGGAAAGCAGATTCTTCTCTAGTCTGAAAGACCCCTCTGGACAAAAGCCCTA
CTCAGGGCCGGCAGGCTGCCTTTGGGGTCCAGCATGGAATCGCTTACGCTCTAGCTGCCTGGTTGTACG
AGTAGTACTTGGACATCCACCAGTTTCCACAGCTGGACAGCCAAGTAAGAAGCCGTCCACTCTGCTC



[View online »](#)

TCCTGCAGCCGCAAGCGCCACCACCTCCCGCCTCAGGTGGCTGCCATCCACGTACAGTTCACAGAGTATT
ACTTCCCAGGATAATCAGGAGCTTCCGGTCCCTGTCCCAATCTCTACATCCAGTTAAACGGGCTGACGTT
TACCGTGGATCCTGTCAGCTTGCTTTGGGGAAACCTCTTTTGCTAGATTTATACCGAAGCTTGGAGCAG
TTTAAAGCCATCTATAAGCTGGAAGCTTCGAGGGGAAGAGATGAGCACGTGGACGTCCGACTGGACGCAT
TCTGGTTGAAGGTGAGCTTCCCCTGGAGACGAGAGAGCTGGCGAAGCTGCATCGCCCCAGGCGCTGGT
CCTCTCCACGTCTCCATGATTGCCACCAATACCCGGCATGCCCGAAGTGCACCTCGCCAGACCTCCAA
AGTCTCTCCGGGATTCTGTCACATGCTCTTCTGCACCATGCTTTCCAGATGGACTCCCTCCCTCCTCAGAG
GGGGCTTCAGCCTTCTGCACATGCTCTTCTGCACCATGCTTTCCAGATGGACTCCCTCCCTCCTCAGAG
GCTGGCCGCATCCCAGGATCTTTGGTCCCTGCATTTACCCAGATCTCCTTGGACTTTGAAGGCACAGAA
AACTTCAGAGGCCATACCCTGAATTTTGTGGTCCCTTCCCCTTGTCCATTTGGGCTGCCTTCTCTCC
GCTGGCAGCAAGCCAGGCACGACGGCTCCTTTTGGCTTCGGAAGGGAGGCTAAAACAGTCAGCCAGCTT
TGGCAGTCTGTGCACTCTGAAGCCCTTGGCCCTGAGTCTGTGTCCATCAGAGGTCAAAGACAGAGCGA
GATTTGAAGAGCCTCTCAGGCTCTACAGAAGGCCCGCAGCGCGGTGAGAGAAGGTGATGCTGGTGTGG
ACCACAAAGGCCGTGTGGCAGACCTGGAGGATGTGGCTGACATTCACATGCTTGTCCACTCCACCGCCA
TGTGAGAGTGAGGCTCGACCACTACCAGTACTTGGCTCTGCTGCGCTCAAGGAGGTGCTAGAGGGCCTT
CAGGAGCAGCTGACAAAGGACACAGAGGCCATGACCGGGTCTCCCTGCAGGACCAAGCCGTGTGCAATTG
GCGTTCTCTTCCCTAGTCCGAGGTGGCTCTCCTCATGCATCCTGCCCTGGGACTGCTCACGGGACTC
TGCAGGCTCAGACACCACCAGCCTCATAGACTCTGAGCTGTACCATCCGAGGACCGGGAGCCGAAGTCT
GATGCCTCCTCAGACCAGGGCGCAGTAAGCCCCGAGAAGGTGCTGAGGGACGGCAGCGGTGAGAACCTGG
CTGCGTCCCAGGAGAGGCTGCCAGCGATGGAGAGCTACCAGACCAGGCCCATGTGCACAGCAGCCAGT
AGGGAAGAGCCACGAGGGCGTGCAGTCTCTCCAGGCCAAGAAGCTAAGCCGAGCTCAGAGTGCCAGGTCC
CCGGCTACGCTGAAGTCCCAGGGGACAGGGATGCTGCTCTGAACGGCCAAGGCGAGCCCGTCCCTTGA
GGAGCATTTGAGGGGACCTGTCCAGCGCTATTACATGACCAAGGACGCCACCAAGAGGGCGCTTACGC
TACCGTGGACCTACCAAGGAGGCTGTGCTCCCTGACTAGGGATGCCTTCAGTTTGGGGAGAGATCGAATG
ACTTCTACCATGCACAAGATGTTGCTCCTTGCCTCCTGCCAAGGAGGCCATGGCCAAGCCAGATGAGGGGG
TGGTGGCCTCAGTGAGTGGGGTGTGCCCGGCTCCGGTTTTTCTCCATGAAGAGGACAGTCTCTCAGCA
GTCATTTGACGGTGTCTCGTTGGACAGCGGTGGCCCCGACGACCGGATTCGGTGGACAGCGATGGAAGT
GACAGCTTTGTGATGCTCTTGGAGTCTGAATCTGGTCCAGAGTCTGTTCCACCAGGATCTGTCACAAGCG
TCTTGGATGATAGTGGCATCCAGGGGAGCCCTGTTACGGATAGTGGTGGCCAGGGGTTGCCAGAGACCAA
CAGCTCAGCGTCAGCCAGCGGAGACCTCGTCATGCACTCGGTGTCAATACTGGTCTTGAAGGTGAACGAA
GTATCACTTGGGATTGAGTTCTGTTGGTGGAGACCTGGCTGTAGCCTTGAAGCAGAAGAGCTGGCCCTGC
AGCAGCTGGGCACCGTGGGACTCTGGCAGTTTCTACATGGACAGTGCCCAAGGCGCAGTTTTCAAGAACC
CTCAAATCTGAAGACCAACCCATCAGGCTGTGTGGGTCTGCGCTTGTAGGTGGGGCCTGGTGCAGCT
GTTCAATCCCCGCTGGCCACACAAAATGGCTTCTCAGTCTTACTTCCGGGCTGTGACCTGGAGCTGT
TCACCTCAGTGTCAACGGTCTGGGGCCTTTCTTGGAGGATGAGGAGGTCCCGGTGGTGGTCCCCATGCA
GATCGAGCTCCTGGACTGCAGGGTCACTCTCAAGGATGACATCCCTCCCGTCTACCCAACATCCCCTGGC
CCTGTCCCATCACTTTGGCAATGGAGCGTCTTGTGCTGAAGCGAGGTGACGATGGAGTGTTCACCTTG
GTGCTCCTGCTCACGACAGACATTGACTGACGTGCCTGAGAAGCTGCGGCTCCCTAAAGAGCAGGTGCT
CCTGGTGCCCTAGGCCAGGGCTTGGGATGCCAGGAGAAAGAATCGCCTACCCTCAGCAAGAGCTTATG
GACACCAAAACAAGCACTGGCCATTGCCAACCCAGGACAAAGAAAATGCTCCAGGAGGTTAGGAAATACA
ACCTCTCTTTGAGCTT

ACGCGTACGCGGCCGCTCGAG - GFP Tag - GTTTAA

Protein Sequence: >MG213491 representing NM_001080769
 Red=Cloning site Green=Tags(s)

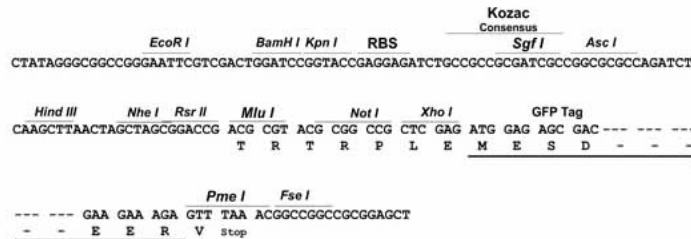
MAGI IKKQILKHL SRFTKNL SPDKINLSTLKGEGQLTHLELDEEVLQNVLELPTWLAI TRVVCNRA SIQI
 QWTKLKTHPICLCDKVEVEMQT CEDPRPPNGQSPIALASGQSEYGF AEKVVEGMFIVVNSITIKIHSKA
 FHASFELWQLQGYSVNPNWQQSDLRLTRITDPRRGEVLT FKEITWQTLRVEADAIENGDQDPVTTPLRLI
 TNQGRIQIALKRRTKDCNVVASKLTFLLDLDLWVLTDSQLKAMMKYAESLSEAMEKSAQQRKSLAPESVQ
 TTPPAPSAQQTWAAQAFGGSQGSSSSRLSQYFEKFDVKESSYHLLISRLDLHICDDSQSREPGVSANRLT
 GGAMQLTFRRMAFDYYPFHRAGDSCKHWVRHCEAMETRGHWAQQLVTEFQSRVEKQCEGGSVKPPWLLGV
 DPPFRRKADSFSSPGKTPDKSPTQGRQAAGAPAWNRLRSSCLVVRVDDLDIHQVSTAGQPSKKPSTLL
 SCSRKRHHLPQVAAIHVQFTEYFDPNQELPVPCPNLYIQLNGLTFTVDPVSLWGNLFCLDLYRSLEQ
 FKAIYKLEASRGRDEHVDVRLDAFWLKVSPLETRELAKLHRPQALVLTSSMIATNTRHAPNCTRPDLQ
 SLFRGFAATEFFRCSYGHFPQVAGGFSLLHMLFLHHAQMDLPPQRLAASQDLWSLHFTQISLDFEGTE
 NFRGHTLNFVAPFPLSIWACLPLRWQAQARRLLASEGRLKQSASFVHSEALAPESVSHQRSKTER
 DLKSLSGSTEGPAAAVREGDAGVDHKGRVADLEVDADIHMLVHSTAHVRVRLDHYQYLALLRLKEVLEGL
 QEQLTKDTEAMTGSPLQDQTVICIGVLPFAEVALLMHPAPGTAHADSAGSDTTSLIDSELSPESEDREPKS
 DASSDQGAVSPEKVL RDGSGENLAASQERLPSDGELPDPGPCAQQPVGKSHEAVESLQAKKLSRAQSARS
 PATLTKSPADRDAALNGQGEVPLRSIEGDLSSAIHMTKDATKEALHATVDLTKEAVSLTRDAFSLGRDRM
 TSTMHKMLSLPPAKEAMAKPDEGVVASVSGGAARLRFSSMKRTVSQQSFDGVSLSLDSGGPDDRISVDSGDS
 DSFVMLLESESGPESVPPGVSVTVLDDSGIQGSPVTDSSGGQLPETNSSASASGDLVMHVSIVLVLKVNE
 VSLGIEVRGEDLAVALQAEELALQQLGTVGLWQFLHGQCPGAGFQEPSNLKTNPIRPAVGLRFEVPGGAA
 VHSPLATQNGFLQFLLRGCDLELFTSVLNGLGPFLEDEEVPVVPMQIELLDCRVTLKDDIPPVYPTSPG
 PVPITLAMERLVLKRGGDGVFHLGAPADRPLTDVPEKLRLPKEQVLLVPLGQGLGCQEKESTPLQQELM
 DTKQALAIANQDKEKLLQEVRYNPLFEL

TRTRPLE - GFP Tag - V

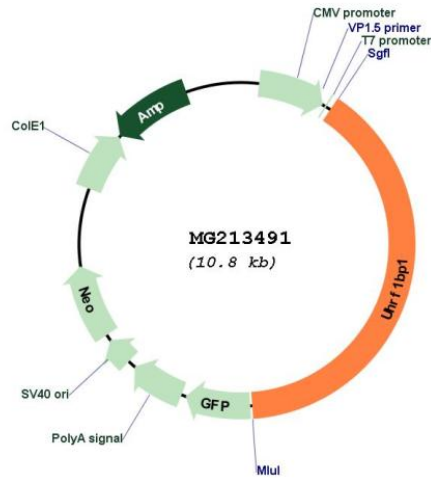
Restriction Sites: SgfI-MluI

Cloning Scheme:

Cloning sites used for ORF Shuttling:



Plasmid Map:



ACCN: NM_001080769

ORF Size: 4287 bp

OTI Disclaimer: Due to the inherent nature of this plasmid, standard methods to replicate additional amounts of DNA in *E. coli* are highly likely to result in mutations and/or rearrangements. Therefore, OriGene does not guarantee the capability to replicate this plasmid DNA. Additional amounts of DNA can be purchased from OriGene with batch-specific, full-sequence verification at a reduced cost. Please contact our customer care team at custsupport@origene.com or by calling 301.340.3188 option 3 for pricing and delivery.

The molecular sequence of this clone aligns with the gene accession number as a point of reference only. However, individual transcript sequences of the same gene can differ through naturally occurring variations (e.g. polymorphisms), each with its own valid existence. This clone is substantially in agreement with the reference, but a complete review of all prevailing variants is recommended prior to use. [More info](#)

OTI Annotation:	This clone was engineered to express the complete ORF with an expression tag. Expression varies depending on the nature of the gene.
Components:	The ORF clone is ion-exchange column purified and shipped in a 2D barcoded Matrix tube containing 10ug of transfection-ready, dried plasmid DNA (reconstitute with 100 ul of water).
Reconstitution Method:	<ol style="list-style-type: none">1. Centrifuge at 5,000xg for 5min.2. Carefully open the tube and add 100ul of sterile water to dissolve the DNA.3. Close the tube and incubate for 10 minutes at room temperature.4. Briefly vortex the tube and then do a quick spin (less than 5000xg) to concentrate the liquid at the bottom.5. Store the suspended plasmid at -20°C. The DNA is stable for at least one year from date of shipping when stored at -20°C.
RefSeq:	<u>NM_001080769.1</u> , <u>NP_001074238.1</u>
RefSeq Size:	8567 bp
RefSeq ORF:	4290 bp
Locus ID:	224648
Cytogenetics:	17 A3.3