

Product datasheet for **MG213458**

Vps9d1 (NM_028200) Mouse Tagged ORF Clone

Product data:

Product Type:	Expression Plasmids
Product Name:	Vps9d1 (NM_028200) Mouse Tagged ORF Clone
Tag:	TurboGFP
Symbol:	Vps9d1
Synonyms:	5DOS1; 1300018I17Rik; 2410004N05Rik; Vsp9d1
Mammalian Cell Selection:	Neomycin
Vector:	pCMV6-AC-GFP (PS100010)
E. coli Selection:	Ampicillin (100 ug/mL)



[View online »](#)

ORF Nucleotide Sequence:

>MG213458 representing NM_028200
 Red=Cloning site Blue=ORF Green=Tags(s)

TTTTGTAATACGACTCACTATAGGGCGGCCGGGAATTCGTCGACTGGATCCGGTACCGAGGAGATCTGCC
 GCC**GCGATCGCC**

ATGGCCGCTGCGCCGGGACGGCGGGGCGAAGCCACTGCAGAGCGCCATGAAACTGGCCAAACAGGCCA
 TCGAGCTAGACACCGCAACCGGCCCGGGAAGGTACGTGGAATACCTGCGCAGCATCCACTACATCTC
 CCAGGTATTGCTCGAAGACGTGAAAACTACAGAAGCTGGGAAACTGTGCCCTGAGACCTCAAAG
 ATGCTAAAGCTGGCTGAACAGTGTCTGGAGCGGCCAGTCAACAGCTACCAAGCTTGGGAGAATATGCC
 TGAAGCCAGCCGTACCTGCGGCTCCTCCACACCTTGCCAACCAGCAGACACCGCCGAGTGTGTTGAGA
 TGAAGGGGGAAGCTGTCTCTTCTGCCCTGAGATCTCCAGAAGCTGCAGGTGCCAGAATCACAA
 AACTCTAAGAAGGAGCTGACACCACTGGAGAAGGCTCCCTACAAAACCAGAAGCTGAGGGCCACATATG
 AGGCCCGGATGGCCGTCTGGACCCAGCCAGGCCATGCAGAAGACATCGCTGACCCTGTCTCTACAGCG
 GCAGATGATGGAGAATCTGGTATCGCCAAAGCAAGAGAAGAGACTGCAGCGGAAGATGGAGGAGCGC
 CGCTGCGCCTTCAGGAGGCTGCCAACAGGAGTTCTGCAAGTCAAGTTGCTCTGACCCAGAGGAGCGGG
 AGCAGCGAGCCCTCTATGCTGCCATCTTGAGTATGAGCAAGACCATGACTGGCCAAAACACTGGAGAGC
 CAAGCTCAAGCGGAGTCCAGGAGACCTGTGCTAGTGACCAGCCTGCTCTCCACTTGCTCAGCCTTCT
 GATCACCAATCTCCAGCTCCTGAAGAAGCTGCAGTGTGCGGTATACAGTGCGTGTATCCGATTGTGA
 GCCGGGCTGCCACCAGTCCCGCCTGCCCCAGGCAGTGTCTCCCTGCCCCAGAAGCCAACGGCCTCCT
 GGCCCTGGGAGCCGTCGACTTCGGTCTCCAGAGCCTCTACTGCATGCTTTCCCTCCGAGCCAGT
 GCAGCCCCACGAGTGTGGATGGACCTCTCCACGCCCTGTGCCCCACACTCCACTCAGGCCCTTG
 ACAGAGAGGCAGACGCCAGCCAGCGGCCCTCCTCACCCCTAGTAGATGCTTTATCCCACTGCCAGA
 CAAGGACAGTCCCTTGAGGATCTGGAACAGTTTTGGCTATGTCTGAGCCTCAGACCCAGGAGCAAAG
 AGGGAACCTTGTGGAGTGTCTGAAGACACAGTCAAGGACATTACAATGCCATTGATAGACTGCTCT
 CGCTGACCCTTTTGGCCTTGAAGCCTGAACACAGCCACCTCCAAGACCGCTGCTGCGCTGCATCGA
 GGAGCCCTTCTTCCCACTGTGGCCCTGCTGCTGGCCCTCTACAGGAGTGTGCACCGTACCCGGGAG
 GCCGCTGAAGCAGGAGCATGGAGCTGTACAGGAACGCACCCCTACAGCCCTAGGCATCCCCACCAAGC
 TCCTCCCAGGTTCTGAGGCTCAAGCCTCCACCTACCCCTACTGCACTGCAGCCAGGAGCTGGGGCT
 GCTGGTCTTGAGAGCTGCCCTCAGAAGAAGCTCGAGTGCATCGTGCGGACGCTGCGGGTATCTGCATC
 TGTGCAGAAGACTACTGCCGTGCCAAGAGGCCAGGCCTGAGGGTGAATCCAGCCCTGCGGCTGCCA
 TCGGTGCTGATGACTTGCTGCCATCCTGTCTCGTGGTGTGAGAAGCGGCCTCCCCAGCTGGTGTG
 AGAGTGTGCGGCCCTGGAAGAGTCACTCATGAGGGGTACTTGATTGGAGAAGAAGGGTATTGTCTGACA
 TCACTGCAGAGCGCCCTGAGCTATGTGGAACCTTGTCCCGGGGACGGCTGGACAAG

ACGCGTACGCGGCCGCTCGAG – GFP Tag – GTTTAA

Protein Sequence:

>MG213458 representing NM_028200
 Red=Cloning site Green=Tags(s)

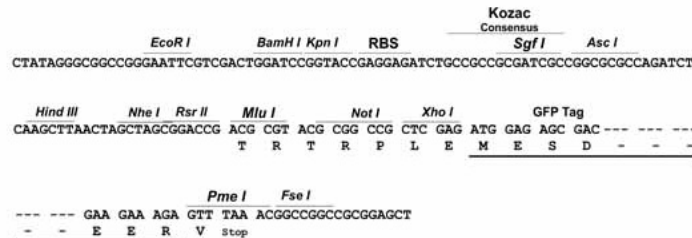
MAAAGDGGAKPLQSAMKLANKAIELDTGNRPREAYVEYLRSIHYSQVLLEDVENTTEAGETVPPETSK
 MLKLAEQCLERAQSTATKLGRICLKPAVPAAPPTPLPTRHRRVCSDEGGKLSFPLPEIFQKLQVAESQ
 NSKKELTPEKASLQNKLRATYEARMARLDPSQAMQKTSLSLQRMENLVIKAREETLQRKMEER
 RLRLQEAANRRFCSQVALTPEEREQALYAAILEYEQDHDWPKHWRAKLRSPGDL SVTSLLSHLLSLP
 DHPI SQLLKKLQCAVYSALYPIVSRAATSAPAPGSCSLPPEANGLLAPGSRRLRSSQSLYCM LSPSEPS
 AAPRVLDGPPPTSVPTLHSGPLDREADGSPAGPSSPLVDALSHLPDKDSSFEDLEQFLAMSEPQTPGAK
 REPLLECLKSTVKDIHNAIDRLLSLTLAFESLNTATSKDRCLACIEEFPFSPWP LLLALYRSVHRTRE
 AAVSRMELYRNAPPTALGIPTKLLPRVPEAQASTYPYCTAAQELGLLVLESCPQKLEICIVRTLRVICI
 CAEDYCRAQEARPEGESQPPAAAIGADDLLPILSFVVLRSGLPQLVSECAALEEF THEGYLIGEGYCLT
 SLQSALSYVELLSRGR LDK

TRTRPLE – GFP Tag – V

Restriction Sites: SgfI-MluI

Cloning Scheme:

Cloning sites used for ORF Shutting:



ACCN: NM_028200

ORF Size: 1947 bp

OTI Disclaimer: The molecular sequence of this clone aligns with the gene accession number as a point of reference only. However, individual transcript sequences of the same gene can differ through naturally occurring variations (e.g. polymorphisms), each with its own valid existence. This clone is substantially in agreement with the reference, but a complete review of all prevailing variants is recommended prior to use. [More info](#)

OTI Annotation: This clone was engineered to express the complete ORF with an expression tag. Expression varies depending on the nature of the gene.

Components: The ORF clone is ion-exchange column purified and shipped in a 2D barcoded Matrix tube containing 10ug of transfection-ready, dried plasmid DNA (reconstitute with 100 ul of water).

Reconstitution Method:

1. Centrifuge at 5,000xg for 5min.
2. Carefully open the tube and add 100ul of sterile water to dissolve the DNA.
3. Close the tube and incubate for 10 minutes at room temperature.
4. Briefly vortex the tube and then do a quick spin (less than 5000xg) to concentrate the liquid at the bottom.
5. Store the suspended plasmid at -20°C. The DNA is stable for at least one year from date of shipping when stored at -20°C.

RefSeq: [NM_028200.2](#), [NP_082476.1](#)

RefSeq Size: 2795 bp

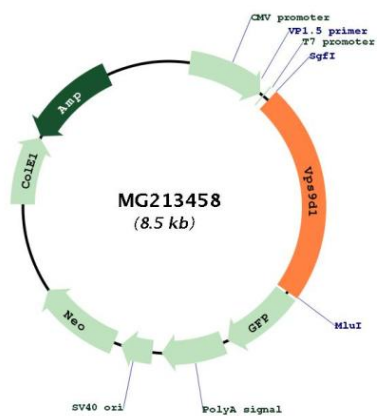
RefSeq ORF: 1950 bp

Locus ID: 72325

UniProt ID: [Q8C190](#)

Cytogenetics: 8 E1

Product images:



Circular map for MG213458