

Product datasheet for **MG213383**

Phactr1 (NM_198419) Mouse Tagged ORF Clone

Product data:

Product Type:	Expression Plasmids
Product Name:	Phactr1 (NM_198419) Mouse Tagged ORF Clone
Tag:	TurboGFP
Symbol:	Phactr1
Synonyms:	9630030F18Rik; Rpel1
Mammalian Cell Selection:	Neomycin
Vector:	pCMV6-AC-GFP (PS100010)
E. coli Selection:	Ampicillin (100 ug/mL)



[View online »](#)

ORF Nucleotide Sequence:

>MG213383 representing NM_198419
 Red=Cloning site Blue=ORF Green=Tags(s)

TTTTGTAATACGACTCACTATAGGGCGGCCGGAATTCGTCGACTGGATCCGGTACCGAGGAGATCTGCC
 GCC**CGGATCGCC**

ATGGATTATCCAAAATGGATTATTTCTGGACGTTGAGTCTGCTCACAGACTCTTGGATGTGGAGTCGG
 CGCAGAGGTTCTTCTACAGTCAAGGAGCTCAAGCTCGCCGGGCGACCCTGCTCCTGCCTCCACATTAAT
 GGCGGTTCTTTCGGAGGATGACATAGACCGGCGGCCATCAGAAGAGTCCGCTCCAAGAGCGACACGCCA
 TATCTCGCAGAGGCCAGGATCTCCTTTAACCTGGGGCAGCCGAGGAAGTGGAGAGGCTGGCAGCCATGC
 GTTCCGACTCGTGGTCCAGGTACGCACACCCGCCCATCCGGAGGAGGAGTAAGTTTGCCAACTGGG
 GAGGATTTTCAAACCTGGAATGGAGGAAGAAGAAAAGTGAAGGTTCAAGCACACGTCAGCAGCTCTG
 GAAAGGAAGATTCGATGAGGCAGAGCAGAGAGGAGCTGATCAAGAGAGGGTCTTGAAGGAGATCTACG
 ATAAAGATGGAGAATCTCTATATCAAATGAAGATGACTCCCTGGAGAACGGACAGTCCCTGAGCTCCAG
 CCAACTCTTTGCTGCTGTGCGAAATGGAGCCTGTCCCAATGCCAGGGACCCATGCTCATATGAG
 GTGCTCCAAGCTTCAGACATTATGGATGGACCAGTGTCTGAAGAGAGTCCCTCTGCCAGTGAAGTCTGGAG
 TCCTCCTGTCCCAAGATCCTTCAGCCAAACAGTTCTGTTCTGCCCCCAAAAAATCTGCTGCTTTCCC
 TGGAGACCATGAGGAGACCCAGTGAACAGTTGTCCCTTACAAGCAGCCCCGGCCCTGCCTCCCAAA
 CCCACTGCCCGGATTGCCAACCACTTAACAGATCCTGGCGCCCTGTGAAATTGCCTTGTCTGCCAGTGA
 AACTGTGCGCTCCGCTACCTCAAAGAAAGTCTGATCTGTATGCCTGTAGGGGGGCCAGAGTCACTCT
 GGCATCCTATGCAGCCAGAAGAGCAGCCAGCAGGCCGTGGCCAGCACCACACCGTCTACCATCC
 CAGATGCAGCACCAGCTGCAGTATGGCAGTACGCGCCAGCATCTCCATCCTCCACCGGCACCTTGCCCA
 TGCACCCCTCAGGCTGCAGGATGATCGACGAGCTGAACAAGACACTGCCATGACGATGCCAGGCTGGA
 AAGCTCCGAGCAACGAGTCCCTGTTCCAGTCTTACCACAGTTCTGGTTTGCACCTCAAGCGACGGCATC
 ACAAAAAGCAGGACCCATGGGCTTCCGGAATAAGACAAGTGCCAACTGTTGTGATTGAATGTGATGACA
 ATAAGGAAAATGTGCTCATGAACCCGACTATGAAGACTCGCCCTGCCTGTATGGCCGGGAGGAGGGA
 AGAGGAGGAAGATGAAGATGATGACGCCTCTTTGTACACCAGTCACTGGCCATGAAGGTGTGCAGGAAG
 GACTCCTTAGCCATCAAACCTCAGCAACAGGCCCTCTAAGCGAGAGCTAGAAGAAAAGAACATCTCCCA
 GACAGACGGATGAGGAACGGCTGGAGCTCAGACAGCAGATTGGCACCAAGCTCACCAGGCGGCTGAGCCA
 GAGACCAACTGCAGAGGAAGTGAACAGAGGAACATTTTGAAGCCTCGGAATGAACAAGAAGAACAGGAG
 GAGAAGCGGGAATCAAGAGGAGGCTGACTCGCAAGCTCAGCAAGGCCACAGTGAAGAACTCCGGG
 AGAGGAAGATCCTTATCCGCTTCACTGACTACGTGGAAGTGGCAGATGCCAAGACTATGACCGAAGGGC
 AGACAAGCCATGGACCCGCTCACCGCTGCAGACAAAGCTGCCATTTCGGAAGGAACCTCAATGAGTTAAA
 AGTACCGAGATGGAAGTCCACGAGTTAAGTAGACACTTAACCAGGTTTCATCGACCT

ACGCGTACGCGGGCCGCTCGAG – GFP Tag – GTTTAA

Protein Sequence:

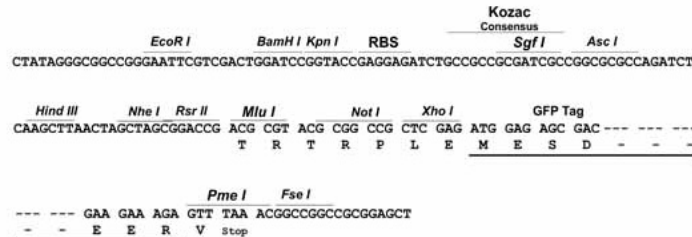
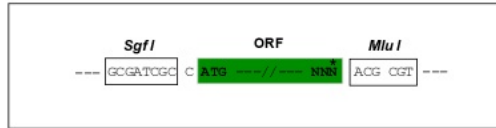
>MG213383 representing NM_198419
 Red=Cloning site Green=Tags(s)

MDYPKMDYFLDVESAHRLLDVESQRFFYSQGAQARRATLLLPTLMAASSEDIDRRPIRRVRSKSDTP
 YLAEARISFNLGAAEVERLAAMRSDSLVPGHTPPIRRRSKFANLGRIFPKWKRKKSEKFKHTSAAL
 ERKISMRSREELIKRVLKEIYDKDGELSI SNEDDSLENGQSL SSSQLSLPALSEMEPVMPDRDPCSYE
 VLQASDIMDGPVSEESPSASESVLLSQDPSAKPVLFLPPKSAAFP GDHEETPVKQLSLHKQPPALPPK
 PTARIANHLTDPGAPVKLPCLPVKLSPLPPKKVLI CMPVGGPELTLASYAAQKSSQQAQAQHHTVLP
 QMQHQLQYGSHGQHLPSSTGTLPMHPSGCRMIDELNKTLAMTMQRLESSEQRVPCSTSYHSSGLHSSDGI
 TKAGPMLPEIRQVPTVVECDNKENVPHEPDYEDSPCLYGRREEEEDEDDASLYTSSLAMKVCRK
 DSLAIKLSNRPSKRELEEKNILPRQTDEERLELRQIGTKLTRRLSQRPTAELEQRNLIKPRNEQEEQE
 EKREIKRRLTRKLSQRPTVEELRERKILIRFSDYVEVADAQDYDRRADKPWTRLTAADKAAIRKELNEFK
 STEMEVHEL SRHLTRFHRP

TRTRPLE – GFP Tag – V

Chromatograms: https://cdn.origene.com/chromatograms/ja1464_g02.zip
Restriction Sites: SgfI-MluI
Cloning Scheme:

Cloning sites used for ORF Shutting:



ACCN: NM_198419

ORF Size: 1947 bp

OTI Disclaimer: The molecular sequence of this clone aligns with the gene accession number as a point of reference only. However, individual transcript sequences of the same gene can differ through naturally occurring variations (e.g. polymorphisms), each with its own valid existence. This clone is substantially in agreement with the reference, but a complete review of all prevailing variants is recommended prior to use. [More info](#)

OTI Annotation: This clone was engineered to express the complete ORF with an expression tag. Expression varies depending on the nature of the gene.

Components: The ORF clone is ion-exchange column purified and shipped in a 2D barcoded Matrix tube containing 10ug of transfection-ready, dried plasmid DNA (reconstitute with 100 ul of water).

- Reconstitution Method:**
1. Centrifuge at 5,000xg for 5min.
 2. Carefully open the tube and add 100ul of sterile water to dissolve the DNA.
 3. Close the tube and incubate for 10 minutes at room temperature.
 4. Briefly vortex the tube and then do a quick spin (less than 5000xg) to concentrate the liquid at the bottom.
 5. Store the suspended plasmid at -20°C. The DNA is stable for at least one year from date of shipping when stored at -20°C.

RefSeq: [NM_198419.3](#), [NP_940811.2](#)

RefSeq Size: 5682 bp

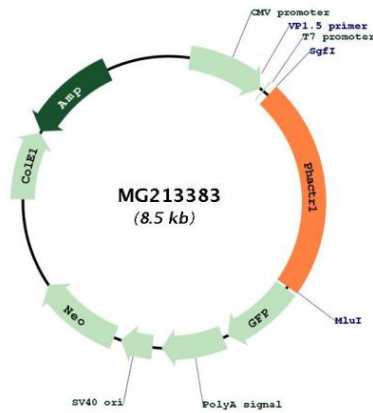
RefSeq ORF: 1950 bp

Locus ID: 218194

Cytogenetics: 13 A4

Gene Summary: Binds actin monomers (G actin) and plays a role in multiple processes including the regulation of actin cytoskeleton dynamics, actin stress fibers formation, cell motility and survival, formation of tubules by endothelial cells, and regulation of PPP1CA activity. Involved in the regulation of cortical neuron migration and dendrite arborization (PubMed:30256902). [UniProtKB/Swiss-Prot Function]

Product images:



Circular map for MG213383