

Product datasheet for **MG213321**

Pcdha2 (NM_198117) Mouse Tagged ORF Clone

Product data:

Product Type:	Expression Plasmids
Product Name:	Pcdha2 (NM_198117) Mouse Tagged ORF Clone
Tag:	TurboGFP
Symbol:	Pcdha2
Mammalian Cell Selection:	Neomycin
Vector:	pCMV6-AC-GFP (PS100010)
E. coli Selection:	Ampicillin (100 ug/mL)



[View online »](#)

ORF Nucleotide
Sequence:

>MG213321 representing NM_198117
 Red=Cloning site Blue=ORF Green=Tags(s)

TTTTGTAATACGACTCACTATAGGGCGGCCGGGAATTCGTCGACTGGATCCGGTACCGAGGAGATCTGCC
 GCC**GCGATCGCC**

ATGCCTTCTTTGAGAGGGGGCCAGAGGTCAGGCAGTGTCTGCTGCTTCTGCTTCTTCTCGCAGCCT
 GGGAGGCAGGGAACGCCAGCTCCACTACTCCGTCGCCGAGGAGGCCAAACACGGCACTTTTGTGGGCCG
 CATCGCGCAGGACCTGGGGCTGGAGCTGACGGAGCTGGTCCCCCGCTGTTCAAGGTGGCTTCCAAGGAC
 CGCGGGGACCTTCTGGAGGTAATCTGCAGAATGGCATTGTTGTTGTGAATTCTCGGATCGACCGGGAGG
 AGCTGTGCGGGCGGAGCGGGAGTGTAGCATCCACCTGGAGGTGATCGTGGACAGGCCGCTGCAGGTTTT
 CCACGTGGAGGTGGAGGTGAGGGACATTAACGACAACCCGCCGCGATTCCAATGACAGAAAAAATATC
 CAGTTTTCCGAATCTAGTTCGCTTGACTCAAGTTTTCTTTAGAGGGAGCCTCTGATGCAGATATCGGAG
 TAAATGCTCTTCTGCTACAAGCTCAGCCCCAGTGAAGTTTTCTTTCTAGATGTTCAAACAAGCGACGA
 ACTAAGCCAATCTCTGTTTCTTGTGCTGGGAAAATCTCTGGACAGAGAGGAGGATCGGGAGGTGAAATTG
 TTAAGTGTAGTACTGATGGAGGCAAGCCTGAGCTCACCGGCACTGTTCAAATACTCATCAAGGTGTAG
 ATGTGAATGACAACGAACCTACTTTCCCAATCCGTTTACAAAGTACAGTTGTTAGAGAACACTGCAAA
 CGGAACCTTAGTGATGAAATTAATGCTTCTGATGCAGATGAAGGATCAAACAGCGAGATTGTGTATTCA
 CTCGGTAGTGATGTGCTTCCACCACACGGACTAAGTTTCAAATCGACCCCAACTCAGGAGAAGTCAGAA
 CTAAGGGAGAGTTAGATTATGAAGAAAGGACATCCTATGAAATCCAGGTGATTGCATCTGACAAGGGAAC
 CCCAGCGATGTCAGGACATTGAAAATTCAGTAAAATGTTGGATATCAATGACAATACGCCAGAAGTC
 TCAATAACGCTCTCTCACTACCCGTGCAAGAGAATGCTCCCTGGGTGCTGTCATCGCCCTCATCTCAG
 TGTGATCGTGACTCGGGAGTCAATGGCAGGTGACCTGCTCCCTGAGTCTCATGTCCTTCAAGT
 GGTGTCCACTTTCAAGAATTAATTTCTCTCGTCTGGACAGCGCCTTGACCGGGAAGCCACAGCTGAC
 TATAAGGTAATGGTGACAGCGCGGATGGGGCTCGCCCTCGCTACGGGCCACGGCCAGCGTGTCTGTGG
 AGGTGGTGACGTGAACGACAATGCTCCAGTGTTCGCTCAGCCGAATACACCGTGTGTTGTGAAGGAGAA
 CAATCCACCAGGAGCGCACATCTCACGGTGTGAGCGATGGATGCTGACGCACAGGAGAATGCGCTGGT
 TCCTACTCGTGGTGGAGCGGAGGGTGGGCGAGCGCTTGTGTCTAGCTATGTGCTGTGCATGCGGAGA
 GCGGCAAGGTGTTGCTCTGCAGCCTCTGGACATGAGGAGCTGGAGCTGCTGCAGTTTCAGGTGACTGC
 GAGGGATGCTGGTGTGCCTGCCCTGGGAGCAATGACTCTGCAGGTGTTGTGCTGGATGAGAATGAC
 AATGCACCCTTGTGCTGCCTCAGGAGCTGTGGGAGTTGGCGGCTCAGTGAAGGAGCTGTACCTAGGT
 CAGTGGGTTCGGGCCATGTAGTACCAAGGTGCGTGCCTGGATGCGGATTCTGGTTACAACGCGTGGCT
 GTCATATGAAGTCAATCCACAGTGGGCATGCGTAGCCTGTTCCGCGTGGGTCTGTATACAGGCGAGATC
 AGCACCACGCGAGCCCTAGATGAAGTGGATGCGCCACGCCAGCGCCTGCTAGTGTGGTGAAGGACCATG
 GTGAGCCTTCGCTGACTGCCACAGCCACAGTGTAGTTTCTCTAGTTGAGAATAGTCAAGCTCCAAAAAC
 TTCATCAAGAGCGTTGGTAGATGCTGCTGGCAAGAGGCGTCTCTGGTACTGTTAACGTGTACCTGGTC
 ATCGCCATCTGCGCGGTGCCAGCCTGTTGGTGTCTCACGCTGTGCTGTACACAGCGTGCCTGCTCAG
 CGATGCCACTGATGGAGCCTGTGCTCCGGGAGGCCATGCTGGTGTGCTCCAGCGCGTGGGGAGCTG
 GTCATACTGCAGCAGAGGCGACAGAGAGTGTGCTCTGGAGAAGGCCCCCTAAGACTGATCTCATGGCC
 TTCAGCCCTAGCCTATCCAAGGTCCGGAATCAGCAGAAGAGAGACAACCACCCTTAGAGGCCGAATACT
 TAGGAAAGCCCCGCGAGCCCAACCTGACTGGCGTACTCTGCCTCGCTAAGAGCAGGCATGCACAGCTC
 TGTGCACCTGGAGGAGGCTGGCATTCTACGGGCTGGTCCAGGAGGGCCTGATCAGCAGTGGCCAACAGTA
 TCCAGTGAACACCAGAACCTGAGGCAGGAGAGGTGTCCCTCCGGTGGGCGCGGTGTCAACAGCAACA
 GCTGGACCTTTAAATACGGACCAGGCAACCCCAACAGTCCGGTCCGGTGGAGTTGCCAGACAAATTCAT
 TATCCCAGGATCTCTGCAATCATCTCCATCCGGCAGGAGCCTGTAACAACCAATGACAAAAGCGAT
 TTTATAACCTTCGGCAAAAAGGAGGAGACCAAGAAAAAGAAGAAAAAGAAGGTAACAAGACCCAGG
 AGAAAAAGAGAAAGGGAACAGCACGACGACAACAGTGACCAG

AG**CGGACCG**ACGCGTACGCGGCCGCTCGAG - GFP Tag - GTTTAA

Protein Sequence: >MG213321 representing NM_198117
 Red=Cloning site Green=Tags(s)

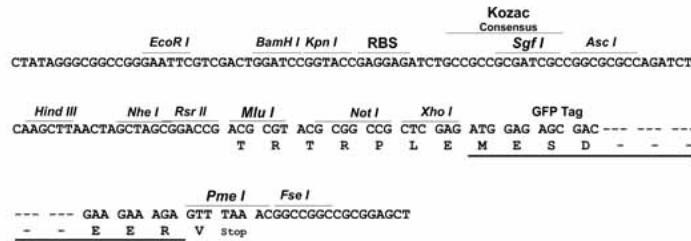
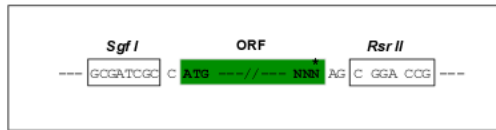
MPSLRGGPEVRQCLLLLLPFLAAWEAGNQLHYSVPPEAKHGTFVGRIAQDLGLELTELVPRLFRVASKD
 RGDLLLEVLQNGILFVNSRIDREELCGRSAECSIHLEVI VDRPLQVFHVEVEVRDINDNPPRFPMTEKTI
 QFSESRSLDSRFPLEGASDADIGVNALLSYKLSPELFFLDVQTSDELSQLFLVLGKSLDREEDAIEVKL
 LLVATDGGKPEL TGTVQILIKVLDVNDNEPTFPQSVYKVLLENTANGTLVMKLNASDADEGSNSEIVYS
 LGSDVSSSTRTKFQIDPNSGEVVRTKGELDYEERTSYEQVIA SDKGTPAMSGHCKISVKLVDINDNTPEV
 SITSLSPVQENAPLGAVIALISVSDRDSGVNGQVTCSLSPHVPFKLVSTFKNYSLVLDSALDREATAD
 YKVMVTARDGGSPSLRATASVSVEVADVNDNAPVFAQPEYTVFVKENPPGAHIFTVSAMDADAQENALV
 SYSLVERRVGERLLSSYVSVHAESGKVFALQPLDHEEELLLQFQVTARDAGVPALGSNVTLQVFLDEND
 NAPLLLPGAVGVGGSVSELVPRSVGSGHVTKVRAVDADSGYNLAWL SYELQSTVGMRS LFRVGLYTGEI
 STTRALDEV DAPRQRLVLVKDHGEP SLTATATVLSLVENSQAPKTS SRALVDAAGQEASLVTVNVYLV
 IAI CAVSSLLVL TLLLYALRCSAMP TDGACAPGRPMLVCSSAVGSWSYSQRRQRVCSGEGPPKTDLMA
 FSPSLSQGPESAERQPPLEAYLGKPRQPNPDWRYASLRAGMHSSVHLEEAGILRAGPGPDQWPTV
 SSATPEPEAGEVSPV GAGVNSNSWTFKYGPGNPKQSGP GELPKDFIIPGSPAIISIRQEPANNQIDKSD
 FITFGKKEETKKKKKKKGNKTQEKKEKGNSTTDNSDQ

SGPTRRRLE - GFP Tag - V

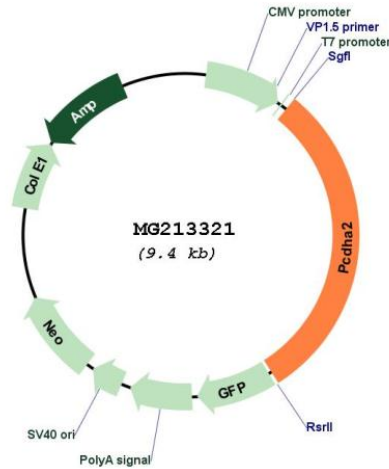
Restriction Sites: SgfI-RsrII

Cloning Scheme:

Cloning sites used for ORF Shuttling:



Plasmid Map:



ACCN: NM_198117

ORF Size: 2844 bp

OTI Disclaimer: The molecular sequence of this clone aligns with the gene accession number as a point of reference only. However, individual transcript sequences of the same gene can differ through naturally occurring variations (e.g. polymorphisms), each with its own valid existence. This clone is substantially in agreement with the reference, but a complete review of all prevailing variants is recommended prior to use. [More info](#)

OTI Annotation: This clone was engineered to express the complete ORF with an expression tag. Expression varies depending on the nature of the gene.

Components: The ORF clone is ion-exchange column purified and shipped in a 2D barcoded Matrix tube containing 10ug of transfection-ready, dried plasmid DNA (reconstitute with 100 ul of water).

Reconstitution Method:

1. Centrifuge at 5,000xg for 5min.
2. Carefully open the tube and add 100ul of sterile water to dissolve the DNA.
3. Close the tube and incubate for 10 minutes at room temperature.
4. Briefly vortex the tube and then do a quick spin (less than 5000xg) to concentrate the liquid at the bottom.
5. Store the suspended plasmid at -20°C. The DNA is stable for at least one year from date of shipping when stored at -20°C.

RefSeq: [NM_198117.2](#), [NP_932785.1](#)

RefSeq Size: 5379 bp

RefSeq ORF: 2847 bp

Locus ID: 353234

Cytogenetics: 18 B2- B3