

## Product datasheet for **MG213251**

### **Olfr242 (NM\_010974) Mouse Tagged ORF Clone**

#### Product data:

**Product Type:** Expression Plasmids  
**Product Name:** Olfr242 (NM\_010974) Mouse Tagged ORF Clone  
**Tag:** TurboGFP  
**Symbol:** Olfr242  
**Mammalian Cell Selection:** Neomycin  
**Vector:** pCMV6-AC-GFP (PS100010)  
**E. coli Selection:** Ampicillin (100 ug/mL)  
**ORF Nucleotide Sequence:** >MG213251 representing NM\_010974  
**Red=Cloning site Blue=ORF Green=Tags(s)**

TTTTGTAATACGACTCACTATAGGGCGGCCGGAATTCGTCGACTGGATCCGGTACCGAGGAGATCTGCC  
GCC**CGATCGCC**

ATGGCAGCAGGAAACCACTGCACAGTACTGAGTTCTTCTAGCTGGGCTCTCAGAGAAGTCAGAACTCC  
AGCTGCCACTCTCCTGCTCTTCACAGGAATCTATCTGATCACTGTGGCAGGGAACCTGGGCATGATCAC  
ACTGATTGGGCTTAGTCCCACCTGCACCCCCATGACTTTTTCGTCAGGAGTCTGTCCTTCATTGAC  
TTCTGTGAGTCCACAGTTGTTATTCCTAAAATGCTCATGAGCTTCTGACAGAGAAGAACATCATCTCTT  
ACTCTGGATGTATGGCTCAGCTACTTCTTCGTCATATTTGGTATTGCAGAGTGCTACACATAGCTGC  
AATGGCATATGACCGATATGTTGCTATTTGTAACCCCTTGCTTTATAATGTAACCATGTCTTATCAGATT  
TACAATTCTCTGATTTCCGGGTCATATATTTTGTGCTGTTCTGTTTCATCCTTAAACACTGGCTTCATGC  
TTAGGACTCAGTTCTGCCATTTAGATGTGATTAACCACTATTTCTGTGATCTTCTCCCCTCTTGAATCT  
TGCATCCTCTAATACGTTTATCATTGAAATATTGATTCTAGTTATTGCTACACTGAATGTCTTTATCCCA  
GTGCTGACCATTATTACTTCTACATCTCATTATTGCCACCATCCTCTGCATTCACTCCAGTGAGGCA  
AGTTCAAGGCTTTTAGTACTTGCAGTCCCACATCTCTGCTGTTGCTATCTTCTACGGTTCTGGTGCATT  
CACATACTTACAGCCGTCATCACTGAATCAATGGCCAAATAAAAGTGTCTCTGTGTTTTATACTACT  
GTTGTACCATGTGAACCCCTAATCTACAGCCTGAGGAATAAAGGATGTCAGTATTTTCATTGAAGAAA  
ATACT

**ACGCGT**ACGCGGCCGCTCGAG - GFP Tag - GTTTAA



[View online »](#)

**Protein Sequence:** >MG213251 representing NM\_010974  
Red=Cloning site Green=Tags(s)

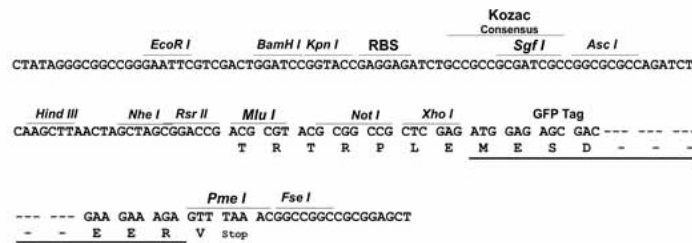
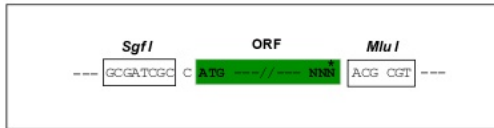
MAAGNHCTVTEFFLAGLSEKSELQLPLFLLFTGIYLITVAGNLGMITLIGLSSHLHTPMYFFVRSLSFID  
 FCQSTVVIPKMLMSFLTEKNIISYSGCMAQLYFFVIFGIAECYTLAAMAYDRYVAICNPLLYNVMTMSYQI  
 YNSLISGSYIFAVFCSSLNTGFMLRTQFCHLDVINHYFCDLLPLLNASSNTFFIIEILVIATLNVFIP  
 VLTIIITSYIFIIATILCIHSSEGKFKAFSTCSSHISAVAI FYGSGAFTYLPSSLN SMGQIKVSSVFYTT  
 VVPMNLPLIYSLRNKGCQYFIEENT

TRTRPLE - GFP Tag - V

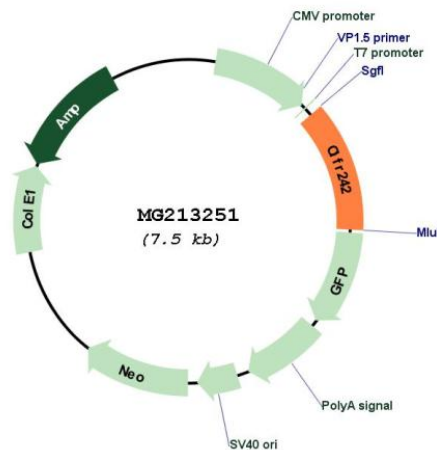
**Restriction Sites:** SgfI-MluI

**Cloning Scheme:**

Cloning sites used for ORF Shutting:



**Plasmid Map:**



**ACCN:** NM\_010974

**ORF Size:** 915 bp

<b>OTI Disclaimer:</b>	The molecular sequence of this clone aligns with the gene accession number as a point of reference only. However, individual transcript sequences of the same gene can differ through naturally occurring variations (e.g. polymorphisms), each with its own valid existence. This clone is substantially in agreement with the reference, but a complete review of all prevailing variants is recommended prior to use. <a href="#">More info</a>
<b>OTI Annotation:</b>	This clone was engineered to express the complete ORF with an expression tag. Expression varies depending on the nature of the gene.
<b>Components:</b>	The ORF clone is ion-exchange column purified and shipped in a 2D barcoded Matrix tube containing 10ug of transfection-ready, dried plasmid DNA (reconstitute with 100 ul of water).
<b>Reconstitution Method:</b>	<ol style="list-style-type: none"><li>1. Centrifuge at 5,000xg for 5min.</li><li>2. Carefully open the tube and add 100ul of sterile water to dissolve the DNA.</li><li>3. Close the tube and incubate for 10 minutes at room temperature.</li><li>4. Briefly vortex the tube and then do a quick spin (less than 5000xg) to concentrate the liquid at the bottom.</li><li>5. Store the suspended plasmid at -20°C. The DNA is stable for at least one year from date of shipping when stored at -20°C.</li></ol>
<b>RefSeq:</b>	<a href="#">NM_010974.1</a> , <a href="#">NP_035104.1</a>
<b>RefSeq Size:</b>	918 bp
<b>RefSeq ORF:</b>	918 bp
<b>Locus ID:</b>	406175
<b>Cytogenetics:</b>	9 A5.1
<b>Gene Summary:</b>	Olfactory receptors interact with odorant molecules in the nose, to initiate a neuronal response that triggers the perception of a smell. The olfactory receptor proteins are members of a large family of G-protein-coupled receptors (GPCR) arising from single coding-exon genes. Olfactory receptors share a 7-transmembrane domain structure with many neurotransmitter and hormone receptors and are responsible for the recognition and G protein-mediated transduction of odorant signals. The olfactory receptor gene family is the largest in the genome. The nomenclature assigned to the olfactory receptor genes and proteins for this organism is independent of other organisms. [provided by RefSeq, Jul 2008]