

Product datasheet for **MG213184**

9130023H24Rik (NM_177001) Mouse Tagged ORF Clone

Product data:

Product Type:	Expression Plasmids
Product Name:	9130023H24Rik (NM_177001) Mouse Tagged ORF Clone
Tag:	TurboGFP
Symbol:	9130023H24Rik
Synonyms:	GLI4
Mammalian Cell Selection:	Neomycin
Vector:	pCMV6-AC-GFP (PS100010)
E. coli Selection:	Ampicillin (100 ug/mL)
ORF Nucleotide Sequence:	>MG213184 representing NM_177001 Red=Cloning site Blue=ORF Green=Tags(s)

TTTTGTAATACGACTCACTATAGGGCGGCCGGAATTCGTCGACTGGATCCGGTACCGAGGAGATCTGCC
GCC**CGATCGCC**

ATGGAACTTGGGCTCCAGAAGTGACCAGGAGAATCTAGATGGGGCTAAGCTGCTGGAGAACCGGACGT
CAAAATCCCAGGAGCCCCAGGTCGCCCTGGATCGCGAGACCGCGCTACATGAGCGCCCCCTCTGGC
GCGGCCGGAACAACCAGCCCCGTGGAAAAATGCTGGACCAGCAGTACTTATGTAGGTCAGGCTCTGGC
CCCAAGGAAGAAACCTTTGTCAAGACCAGTGATCCTGCAGTCCCCAAAGCTTTCAAGTGTAGGGATTGTG
GGTTGGCTGTACCCAGTCTCTGATCTCATTACCATCAAAGCAGCCATGGGTGTGACCGCCCTTACAG
CTGTCCAGAGTGTGACAAAAGCTTCCGGCGTGGCTCAGATCTGGTTAAGCATTACCGAGTTCACAGTGGT
GAAAAACCATACCCCTGCCCAGAATGTGGCCGTTGCTTCAGCCTCAGCTCTAATCTCACTAAACCCGTC
GTTCTCACTCAGGTCTCCGGCCGCACAAGTGCATGGAGTGCAGGAGAGGCCCTTTGGTGCAGTGCAGACCT
AGCAAAACACCAGCGGTGCACACTGGGAAAAGCCCTATGCGTGTGCTGAGTGTGGAAAGACTTTCAGG
GTTAGCTCCAACCTGATCCAGCACCAGCGAACTCACACTGGTGAGAAAACCTACCGCTGTGGCCTCTGTG
GCAAGAGTTTCAGCCTGAGCTCTAACCTTTTACAGCACCAGCGTGTACACAGGCGAGAAAACCTACTT
CTGTGCCTGGTGGGAGACAGCTTTGGGCAAGTTCCTATCTGCTAGAACACCAGCGTTCACACACGGGT
GAGAAGCCCTACAATTGCTGTGAGTGTGGCAAGAACTTCACCAACAGCTCAAAGCTACGGCACCAGC
GCACTACAATGGAGAACCGCCCTCAGGTGTCTTGAATGTGGTGGCTTTAGTGAGATCACCATGTT
CACTGAACACCAGCGCATCCACTTGAGCAA

ACGCGTACGCGGCCGCTCGAG - GFP Tag - GTTTAA



[View online »](#)

Protein Sequence: >MG213184 representing NM_177001
 Red=Cloning site Green=Tags(s)

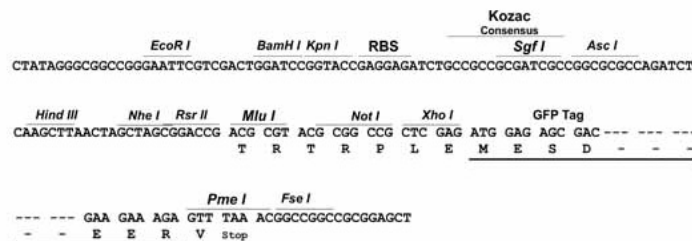
MELAAPEVTRENLDGAKLLENRTSKFPGAPRSPLDRETALHERPLLARPEQPAPVEKMLDQQYLCRSGSG
 PKEETFVKTSDDPAVPAFKCRDCGLAVPSLSDLIHHQSSHGCDRYPYSCPECDKSFRRGSDLVKHYRVHSG
 EKPYPCECGRCFSLSSNLTKHRRSHSGLRPHKMECEAFGRSADLAKHQVHTGEKPYACAECGKTFR
 VSSNLIQHQRHTHTGEKPYRCGLCGKSFSLSSNLLQHQRCHTGEKPYFCAWCGDSFGRSSYLLEHQRSHTG
 EKPYNCCCECGKNFTNSSNCLRHQRTHNGEPPFRCLCEGRGFSEITMFTHEHQRIHLSK

TRTRPLE - GFP Tag - V

Restriction Sites: SgfI-MluI

Cloning Scheme:

Cloning sites used for ORF Shuttling:



ACCN: NM_177001

ORF Size: 1011 bp

OTI Disclaimer: The molecular sequence of this clone aligns with the gene accession number as a point of reference only. However, individual transcript sequences of the same gene can differ through naturally occurring variations (e.g. polymorphisms), each with its own valid existence. This clone is substantially in agreement with the reference, but a complete review of all prevailing variants is recommended prior to use. [More info](#)

OTI Annotation: This clone was engineered to express the complete ORF with an expression tag. Expression varies depending on the nature of the gene.

Components: The ORF clone is ion-exchange column purified and shipped in a 2D barcoded Matrix tube containing 10ug of transfection-ready, dried plasmid DNA (reconstitute with 100 ul of water).

Reconstitution Method:

1. Centrifuge at 5,000xg for 5min.
2. Carefully open the tube and add 100ul of sterile water to dissolve the DNA.
3. Close the tube and incubate for 10 minutes at room temperature.
4. Briefly vortex the tube and then do a quick spin (less than 5000xg) to concentrate the liquid at the bottom.
5. Store the suspended plasmid at -20°C. The DNA is stable for at least one year from date of shipping when stored at -20°C.

RefSeq: NM_177001.3, NP_795975.1

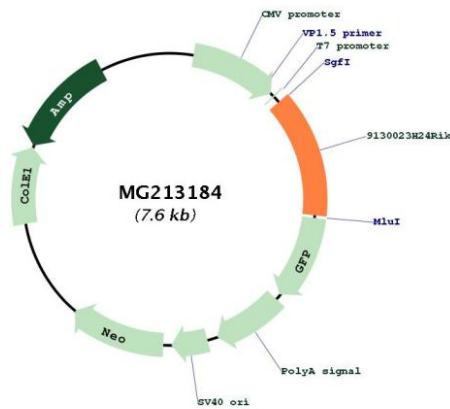
RefSeq Size: 3581 bp

RefSeq ORF: 1014 bp

Locus ID: 100043133

Cytogenetics: 7 F3

Product images:



Circular map for MG213184