

## Product datasheet for **MG213112**

### Srp72 (NM\_025691) Mouse Tagged ORF Clone

#### Product data:

Product Type:	Expression Plasmids
Product Name:	Srp72 (NM_025691) Mouse Tagged ORF Clone
Tag:	TurboGFP
Symbol:	Srp72
Synonyms:	72kDa; 5730576P14Rik; A1132477; BC019196; C77589
Mammalian Cell Selection:	Neomycin
Vector:	pCMV6-AC-GFP (PS100010)
E. coli Selection:	Ampicillin (100 ug/mL)



[View online »](#)

ORF Nucleotide  
Sequence:

>MG213112 representing NM\_025691  
 Red=Cloning site Blue=ORF Green=Tags(s)

TTTTGTAATACGACTCACTATAGGGCGGCCGGAATTCGTCGACTGGATCCGGTACCGAGGAGATCTGCC  
 GCCGCGATCGCC

ATGGCGAGCGCGGCAGTGGTGGGTGTACAGTCCCTGCGCTGTGGAGTGAGGTGAACCGTTATGGGCAGA  
 ACAGCGACTTCACGCGTGCCCTCAAGACTGTCAACAAGATATTGCAGATCAACAAGGATGATGCTACTGC  
 CCTGCACTGTAAAAGTAGTTTGCCTTATCCAGAATGGAAGTTTCAAAGAAGCCTTGAATGTCATCAACT  
 CACACCAAAGTGTAGCCAATAACTCCCTGTCTTTGAGAAGGCATATTGCGAGTACAGGTTGAACAGAA  
 TTGAGAATGCCTGAAGACAATAGAGAGTGCCACCCAGCAGACAGACAAACTGAAGGAGCTTTATGGACA  
 AGTGCTGTACCGCTGGAACGCTACGATGAGTGCTTGGCTGTGTACAGAGATCTTGTCCGGAACCCAG  
 GACGACTATGATGAGGAGAGGAAAACAACCTGTACGCGTGTGTCGCGCTCAGAGCAACTGGGAAAAAG  
 TGGTTCCTGAGAACTGGGTCTCCAAGAAGGCACACAGAGCTCTGTTACAACGCTGCATGTGCACTGAT  
 AGGGCAAGGCCAGCTGACCCAGGCCATGAAAATCTGCAAAAAGCTGAAGATCTTTGTCGCCGTTCAATT  
 TCAGAAGATTCAGATGGGGCTGAGGAGGACCCCAAGCGGAACTGGCCATCATCCATGGTCAGATGGCGT  
 ACATCATGCAGCTGCAGGGTGCACAGAGGAGGCGCTGCAGCTCTACAATCAGATCATCAAGCTGAAGCC  
 AACAGATGTGGCACTTCTCGCTGTAATCGCAAATAACATCATTACCATTAATAAGGACCAAAAATGTCTTT  
 GACTCCAAGAAAAAGTGAATTAACCAATGCAGAAGGAGTGGAGTTCAAGCTCTCAAAGAGACAGCTGC  
 AAGCCATAGAGTTTAAACAAAGCTTTGCTTGCCATGTATACAAACCAGGCAGAACAGTGCCGAAAAATAGC  
 TGCCAGCTTGAGTGCAGAGTCTGAGTATCTCTGCCTGTGCTAATCCAAGCCGCCAGCTCTGTCGT  
 GAAAAGCAGCATACAAAAGCAATAGAGCTGCTTCAGGAATCTCTGATCAACATCCAGAAAATGCAGCTG  
 AAATCAAGCTTACCATGGCACAATTGAAAATTTCCAAGGTAATTTTCCAAGCGTGTCTAATCCTGAG  
 AAGTATAGAGGAGCTGAGGCACAAGCCAGGCATGGTATCTGCATTGGTGACCATGTACAGCCACGAGGAA  
 GATATTGATAGTGCCATCGAAGTCTTACACAGGCTATCCAGTGGTACCAAAGCCACCAGCCAAAATCCC  
 CTGCTCATTTGTCCTTGATAAGAGAAGCTGCAAACTTCAAGCTCAAATATGGCCGGAAGAAGGAGGCAGT  
 CAGTGACCTAGAACAGCTGTGGAACAGAAATTCAAAAGATATTCACACCCTAGCCCAACTATTTTCTGCT  
 TACTCGCTTGTGGATCCAGAGAAAGCAAAGGCTTTAGCAAACACCTGCCCTCATCGGATAGCATGTCTC  
 TAAAAGTAGATGTTGAGGCGCTTGAATAATCTCTGGTGTACCTACATTCGGAAGAAGGGTGGAAAAGT  
 TACTGGAGATAACCAACCAAGGAACAAGGACAGGGAGATTTGAAAAGAAGAAGAAGAAAAGAAAGGA  
 AACTGCCTAAGAATTATGACCCAAAAGTTACCCAGATCCAGAAAGATGGCTACCAATGCGAGAGCGCT  
 CTTATTACCGAGGAAGAAAGAAGGGTAAAAGAAGGACCAGATTGGAAAAGGAACACAGGGAGCGACTGC  
 AGGAGCCTCCTCTGAACTGGATGCCAGTAAAGCCGTGAGCAGCCACCCACCTCCCGGAGACCCGGCAGT  
 GCGGCAACAATATCGTCCTCTGCAAGTAACATTGTACCCCAAGACACCAGAAAACCTGCAGGCGCCCCAG  
 CAACCAAAAAGAAACAGCAACAGAAGAAGAAGAAAGGAGGGAAAAGTGGCTGG

AGCGGACCGACGCGTACGCGGCCGCTCGAG - GFP Tag - GTTTAA

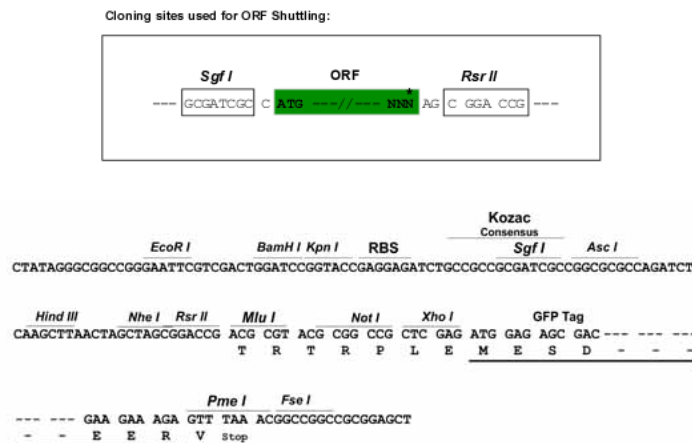
**Protein Sequence:** >MG213112 representing NM\_025691  
Red=Cloning site Green=Tags(s)

MASGGSGGVSVPALWSEVNRVYQNSDFTRALKTVNKILQINKDDVTALHCKVVCLIQNGSFKEALNVINT  
 HTKVLANNLSFEKAYCEYRLNRIENALKTIESATQQTDLKEL YGOVL YRLERYDECLAVYRDL VRNSQ  
 DDYDEERKTNL SAVVAAQSNWEKVV PENLGLQEGTHELCYNAACALIGQGQLTQAMKILQKAEDLCRRSF  
 SEDSDGAEEDPQAE LAI IHGMAYIMQLQGRTEEALQLYNQI IKLKPTDVAL LAVIANNIITINKDQNVF  
 DSKKKVKLTNAEGVEFKLSKRQLQAIEFNKALLAMYTNQAEQCRKIAASLQSQSPEYLLPVL IQAAQLCR  
 EKQHTKAI ELLQEFSDQHPENAAEIKLTMAQLKISQGNISKA CLILRSIEELRHKPGMV SALVTMYSHEE  
 DIDS AIEVFTQAIQWYQSHQPKSPAHL SLIREANFKLKYGRKKEAVSDLEQLWKQNSKDIHTLAQLISA  
 YSLVDPEKAKALSKHLPSSDSMLKVDVEALENSPGATYIRKKGKVTGDNQPK EQGGDLKKKKKKKKG  
 KLPKNYDPKVPDPERWLP MRERSYYRGRKKGKKKQIGKGTQGATAGASSELDASKAVSSPPTSPRPGS  
 AATISSASNI VPPRHQKPAGAPATKKKQQQKKKGGKSGW

SGPTRRRLE - GFP Tag - V

**Restriction Sites:** SgfI-RsrII

**Cloning Scheme:**



**ACCN:** NM\_025691

**ORF Size:** 2013 bp

**OTI Disclaimer:** The molecular sequence of this clone aligns with the gene accession number as a point of reference only. However, individual transcript sequences of the same gene can differ through naturally occurring variations (e.g. polymorphisms), each with its own valid existence. This clone is substantially in agreement with the reference, but a complete review of all prevailing variants is recommended prior to use. [More info](#)

**OTI Annotation:** This clone was engineered to express the complete ORF with an expression tag. Expression varies depending on the nature of the gene.

**Components:** The ORF clone is ion-exchange column purified and shipped in a 2D barcoded Matrix tube containing 10ug of transfection-ready, dried plasmid DNA (reconstitute with 100 ul of water).

- Reconstitution Method:**
1. Centrifuge at 5,000xg for 5min.
  2. Carefully open the tube and add 100ul of sterile water to dissolve the DNA.
  3. Close the tube and incubate for 10 minutes at room temperature.
  4. Briefly vortex the tube and then do a quick spin (less than 5000xg) to concentrate the liquid at the bottom.
  5. Store the suspended plasmid at -20°C. The DNA is stable for at least one year from date of shipping when stored at -20°C.

**RefSeq:** [NM\\_025691.1](#), [NP\\_079967.1](#)

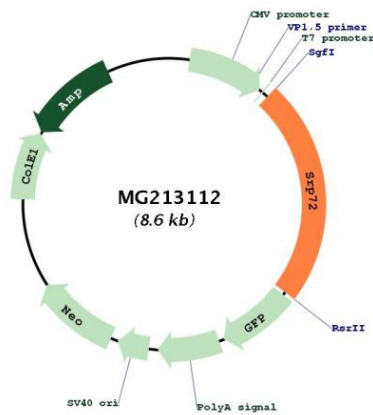
**RefSeq Size:** 3605 bp

**RefSeq ORF:** 2016 bp

**Locus ID:** 66661

**Cytogenetics:** 5 C3.3

**Product images:**



Circular map for MG213112